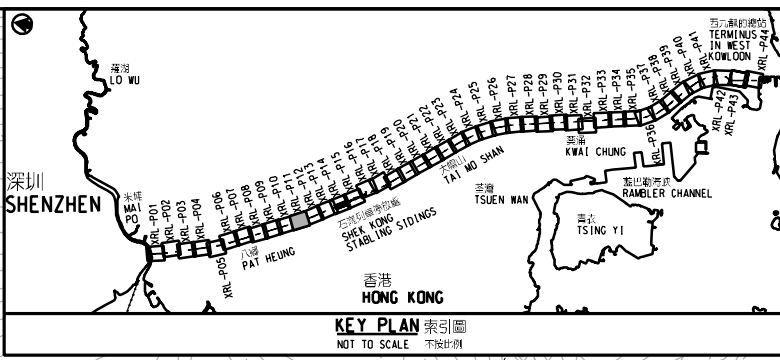
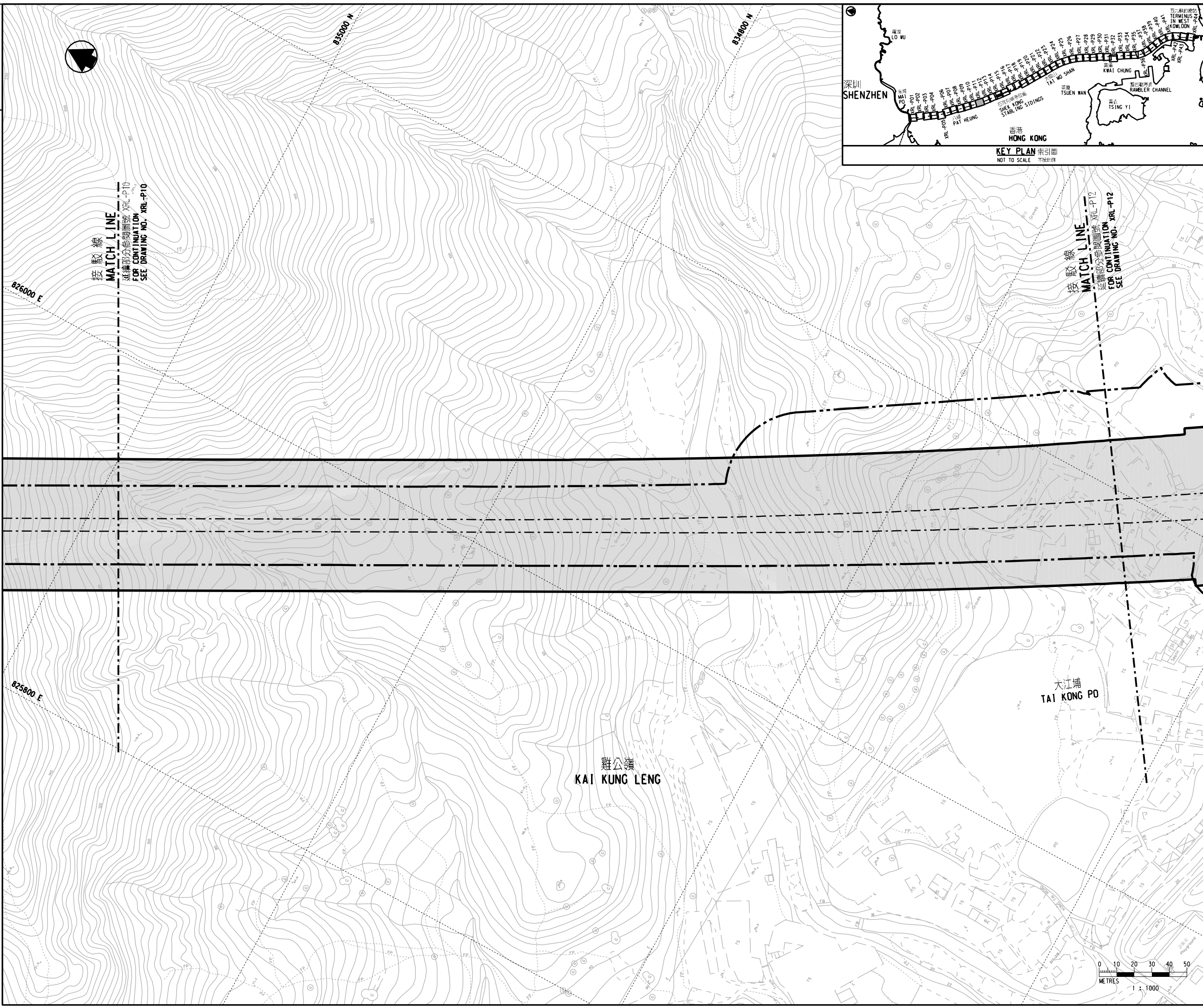


DRAWING NO. XRL - P11



圖例 LEGEND

- 方案界線
BOUNDARY OF THE SCHEME
- 擬建的路軌中線
PROPOSED RAILWAY TRACK CENTRE LINE
- 擬建的鐵路車站
PROPOSED RAILWAY STATION
- 就建築工程（包括在方案界線以外進行的建築工程）與方案或鐵路的管理或維修不相容，可行使建築圖則或建築工程展開的控制的土地範圍
AREA OF LAND ON WHICH CONTROL OF BUILDING PLANS OR COMMENCEMENT OF BUILDING WORKS (INCLUDING BUILDING WORKS OUTSIDE THE BOUNDARIES OF THE SCHEME) WHICH ARE INCOMPATIBLE WITH THE SCHEME OR THE OPERATION OR MAINTENANCE OF THE RAILWAY MAY BE REQUIRED

接駁線
MATCH LINE
FOR CONTINUATION
SEE DRAWING NO. XRL-P10

接駁線
MATCH LINE
FOR CONTINUATION
SEE DRAWING NO. XRL-P12

修訂表
TABLE OF AMENDMENTS

修訂	日期	繪圖	核對	批准	說明
REV	DATE	BY	SUB	APP	DESCRIPTION

獲准發出
APPROVED FOR ISSUE
路政署
鐵路發展處處長(2)
GOVERNMENT ENGINEER/
RAILWAY DEVELOPMENT (2)
HIGHWAYS DEPARTMENT

發出日期 DATE OF ISSUE

圖則名稱 DRAWING TITLE
廣深港高速鐵路香港段
鐵路條例(第519章)
控制建築圖則及工程展開圖則
44頁的第11頁
HONG KONG SECTION OF
GUANGZHOU - SHENZHEN - HONG KONG
EXPRESS RAIL LINK
RAILWAYS ORDINANCE (CHAPTER 519)
CONTROL OF BUILDING PLANS AND
COMMENCEMENT OF WORK PLAN SHEET 11 OF 44

圖號 DRAWING NO.
XRL - P11
比例 SCALE
1:1000 (A1)
或如顯示
OR
AS SHOWN

香港特別行政區政府
THE GOVERNMENT OF THE HONG KONG
SPECIAL ADMINISTRATIVE REGION
路政署
HIGHWAYS DEPARTMENT
鐵路拓展處
RAILWAY DEVELOPMENT OFFICE

