

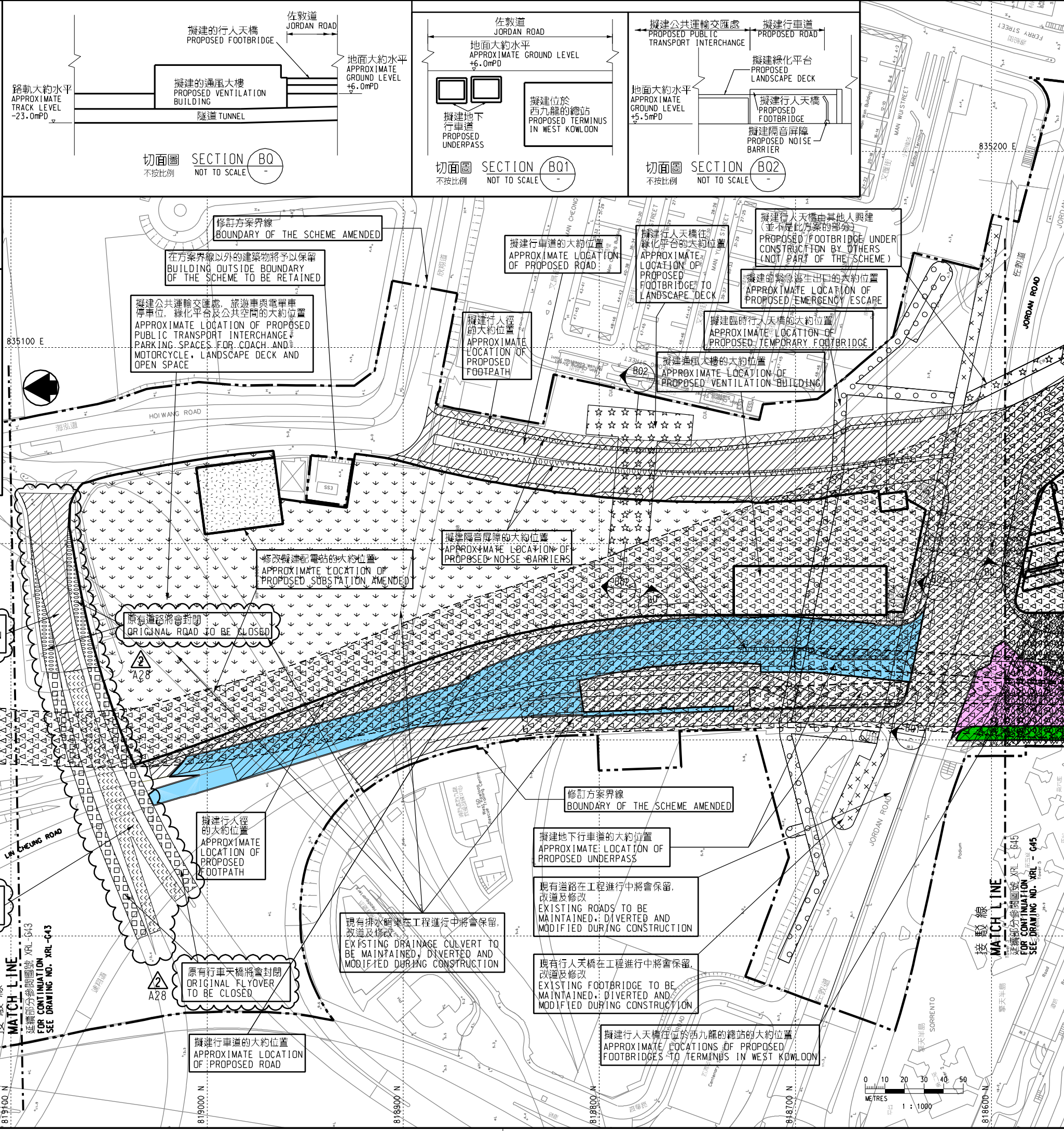
一般說明 GENERAL NOTES

- 1. 剖面圖所示鐵路設施的形狀和輪廓均屬示意性質。 GEOMETRY AND CONFIGURATION OF RAILWAY FACILITIES SHOWN IN SECTIONS ARE SCHEMATIC.
2. 所有在方案界線內的道路(包括行車道、行人徑及露天地方)無論有否在圖則中顯示,都有可能永久或暫時封閉或大幅改動。 ALL ROADS INCLUDING CARRIAGEWAYS, FOOTPATHS AND OPEN PLACES WITHIN THE BOUNDARY OF THE SCHEME, WHETHER OR NOT SHOWN ON THE DRAWINGS, MAY BE CLOSED OR ALTERED SUBSTANTIALLY ON A PERMANENT OR TEMPORARY BASIS.
3. 除非圖則中特別註明,否則在方案界線內,或與方案界線毗鄰的所有建築物的汽車通道及行人通道,包括逃生路徑,將會保留。 UNLESS NOTED OTHERWISE ON THE DRAWINGS, VEHICULAR AND PEDESTRIAN ACCESSES INCLUDING MEANS OF ESCAPE TO AND FROM ALL BUILDINGS WITHIN OR ADJACENT TO THE BOUNDARY OF THE SCHEME ARE TO BE MAINTAINED.
4. 所有水平均為約數,以米為單位,並高於香港的主水平基準。 ALL LEVELS ARE APPROXIMATE AND IN METRES ABOVE HONG KONG PRINCIPAL DATUM (mPD).
5. 圖則顯示的建造方法分界線只是大致位置,有關界線可因應當時的地盤情況而作出改動。 BOUNDARIES SHOWN ON DRAWINGS FOR THE CONSTRUCTION METHODS TO BE CARRIED OUT ARE APPROXIMATE ONLY. THESE BOUNDARIES MAY BE ALTERED ON SITE TO SUIT PREVAILING SITE CONDITIONS.

說明 NOTES

此圖根據第XRL-G44號(修改2)圖則制訂,以藍色標明將暫時封閉的連翔道路段;以粉紅色標明將暫時封閉的連翔道路段的行車道路面,及以綠色標明將暫時封閉的連翔道路段的行人路路面。

THIS DRAWING IS PREPARED BASED ON DRAWING NO. XRL-G44 (REVISION 2) AND IS INTENDED TO SHOW THE TEMPORARY CLOSURE OF THE SECTION OF LIN CHEUNG ROAD (HIGHLIGHTED IN BLUE), THE TEMPORARY CLOSURE OF THE CARRIAGEWAY WIDTHS OF THE SECTION OF LIN CHEUNG ROAD (HIGHLIGHTED IN PINK), AND THE TEMPORARY CLOSURE OF THE FOOTPATH WIDTHS OF THE SECTION OF LIN CHEUNG ROAD (HIGHLIGHTED IN GREEN).



圖例 LEGEND

- 方案界線 BOUNDARY OF THE SCHEME
擬建的車站及其他鐵路設施 PROPOSED STATION AND OTHER RAILWAY FACILITIES
擬建的車站及其他鐵路設施(地下) PROPOSED STATION AND OTHER RAILWAY FACILITIES (UNDERGROUND)
擬建的鑽挖或炸裂或鑽鑿隧道 PROPOSED BORED / MINED / DRILL AND BLAST TUNNEL
擬採用明挖回填法興建的鐵路設施或隧道 PROPOSED RAILWAY FACILITIES/TUNNEL BY CUT-AND-COVER METHOD
擬建的地下臨時建築通道 PROPOSED TEMPORARY UNDERGROUND CONSTRUCTION ACCESS
可能永久封閉的道路(包括行車道和行人徑) WHICH MAY BE CLOSED PERMANENTLY (INCLUDING CARRIAGEWAY AND FOOTPATH)
擬建的緊急車輛通道及行車道 PROPOSED EMERGENCY VEHICULAR ACCESS AND CARRIAGEWAY
擬建的行人徑 PROPOSED FOOTPATH
現有的行人天橋將受影響 EXISTING FOOTBRIDGE TO BE AFFECTED
擬建的臨時行人天橋(地面行人過路處) PROPOSED TEMPORARY FOOTBRIDGE / AT-GRADE PEDESTRIAN CROSSING
擬建的行人天橋 PROPOSED FOOTBRIDGE
可能在其上進行填海工程或其他工程的政府前濱或海床 OVER OR UPON WHICH RECLAMATION OR OTHER WORKS MAY BE CARRIED OUT
擬建的隔音屏障/隔音罩 PROPOSED NOISE BARRIER / NOISE ENCLOSURE
擬建的地下行車道 PROPOSED UNDERPASS
擬建的公共運輸交匯處/旅遊車與電車停車位/綠化平台/公共空間 PROPOSED PUBLIC TRANSPORT INTERCHANGE / PARKING SPACES FOR COACH AND MOTORCYCLE / LANDSCAPE DECK / OPEN SPACE
可能永久封閉的行人天橋 FLYOVER WHICH MAY BE CLOSED PERMANENTLY
擬建的行人天橋 PROPOSED FLYOVER
圖則修改 DRAWING REVISION
修訂參考編號(參考憲報公告) AMENDMENT REFERENCE NUMBER (SEE GAZETTE NOTICE)
修訂範圍 AMENDMENT AREA

Table with 5 columns: REV, DATE, BY, SUP, APP, DESCRIPTION. Contains revision details for the drawing.

SIGNED 饒漢華 NGAI HON WAH
批准發出 APPROVED FOR ISSUE
10/04/2017
發出日期 DATE OF ISSUE

圖則名稱 DRAWING TITLE
鐵路條例(第519章)
廣深港高速鐵路香港段
暫時封閉連翔道路段

RAILWAYS ORDINANCE (CHAPTER 519)
HONG KONG SECTION OF
GUANGZHOU - SHENZHEN - HONG KONG
EXPRESS RAIL LINK
TEMPORARY CLOSURE OF SECTIONS OF
LIN CHEUNG ROAD

圖號 DRAWING NO.
XRL/G44/0022/2
比例 SCALE
1:1000 (A1)
或如顯示
OR
AS SHOWN