



在工程進行中及完成後將會保留、
改造或修改的現有車輛通道
EXISTING VEHICULAR ACCESS TO BE
MAINTAINED, DIVERTED OR MODIFIED
DURING AND AFTER CONSTRUCTION

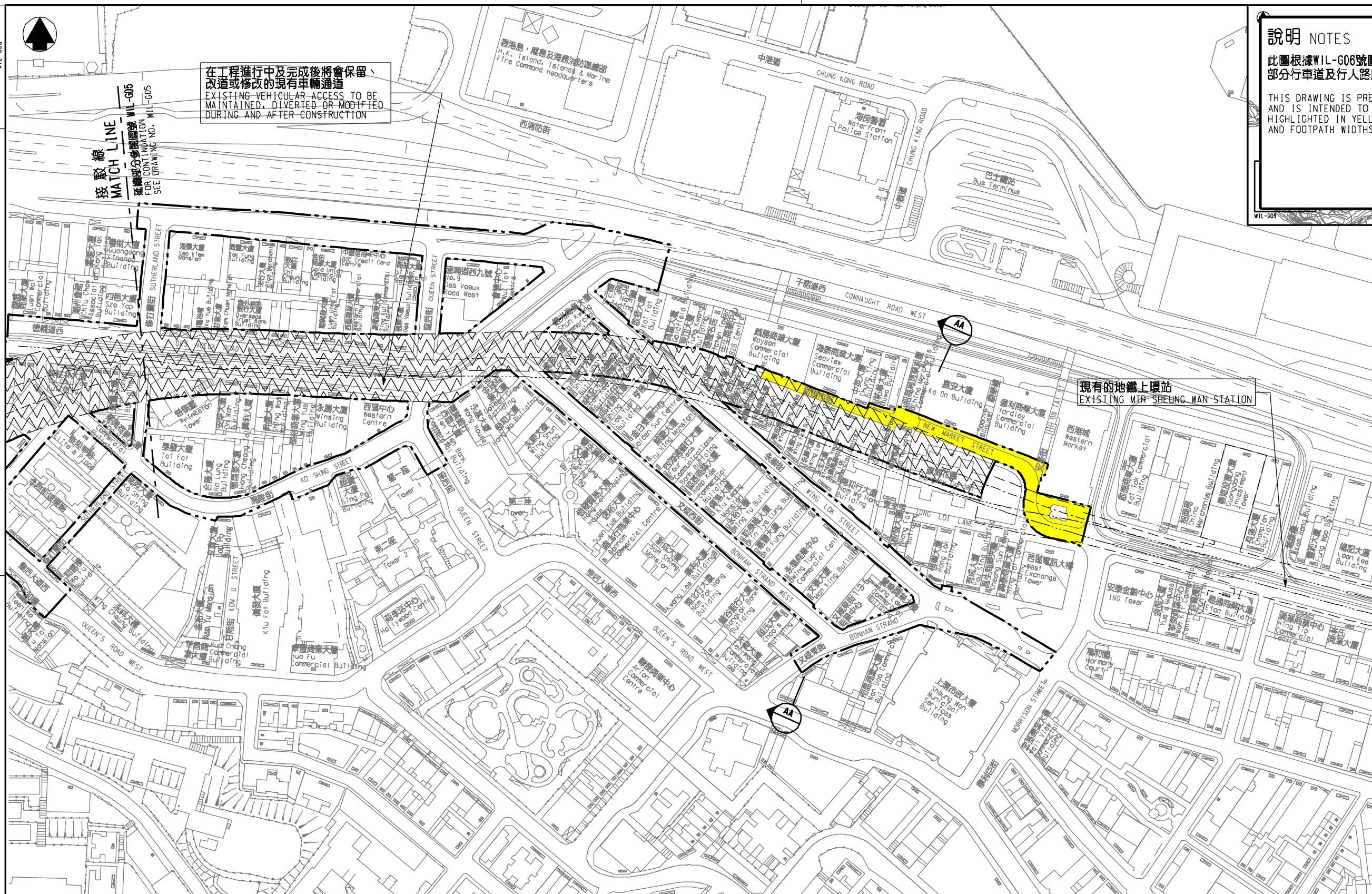
接駁線
MATCH LINE
FOR CONTINUATION
SEE DRAWING NO. WIL-G05

說明 NOTES

此圖根據WIL-G06號圖則制訂，以黃色標明新街市街將暫時封閉的
部分行車道及行人路路面的路面。
THIS DRAWING IS PREPARED BASED ON DRAWING NO. WIL-G06
AND IS INTENDED TO SHOW SECTIONS OF NEW MARKET STREET
HIGHLIGHTED IN YELLOW OF WHICH PARTS OF THE CARRIAGEWAY
AND FOOTPATH WIDTHS ARE TO BE TEMPORARILY CLOSED.

一般說明 GENERAL NOTES

1. 剖面圖所示鐵路設施的形狀和輪廓均屬示意性質。
GEOMETRY AND CONFIGURATION OF RAILWAY FACILITIES
SHOWN IN SECTIONS ARE SCHEMATIC.
2. 所有在劃定方案界線內的道路（包括行車道、行人徑及露天地方），
無論有否在圖則中顯示，都有可能永久或暫時封閉或大幅改動。
ALL ROADS INCLUDING CARRIAGEWAYS, FOOTPATHS AND OPEN PLACE
WITHIN THE BOUNDARY OF THE SCHEME, WHETHER OR NOT SHOWN
ON THE DRAWINGS MAY BE CLOSED OR ALTERED SUBSTANTIALLY
ON A PERMANENT OR TEMPORARY BASIS.
3. 除非圖則中有別註明，否則在方案界線內，或與方案界線毗鄰的
所有建築物的汽車通道及行人通道，包括逃生通道，將會保留。
UNLESS NOTED OTHERWISE ON THE DRAWINGS, VEHICULAR AND
PEDESTRIAN ACCESSES INCLUDING MEANS OF ESCAPE TO AND
FROM ALL BUILDINGS WITHIN OR ADJACENT TO THE BOUNDARY
OF THE SCHEME ARE TO BE MAINTAINED.
4. 所有水平均為約數，以米為單位，並高於香港的主水平基準。
ALL LEVELS ARE APPROXIMATE AND IN METRES ABOVE
HONG KONG PRINCIPAL DATUM (HPD).
5. 圖則顯示的建造方法分界線只是大概位置，有關界線可因應當時
的地盤情況而作出改動。
BOUNDARIES SHOWN ON DRAWINGS FOR THE CONSTRUCTION METHODS
TO BE CARRIED OUT ARE APPROXIMATE ONLY. THESE BOUNDARIES
MAY BE ALTERED ON SITE TO SUIT PREVAILING SITE CONDITIONS.



現有的地鐵上環站
EXISTING MIRSHEUNG WAN STATION

修訂表 TABLE OF AMENDMENTS

修訂 REV	日期 DATE	繪圖 BY	核對 SUB	負責 APP	說明 DESCRIPTION

SIGNED

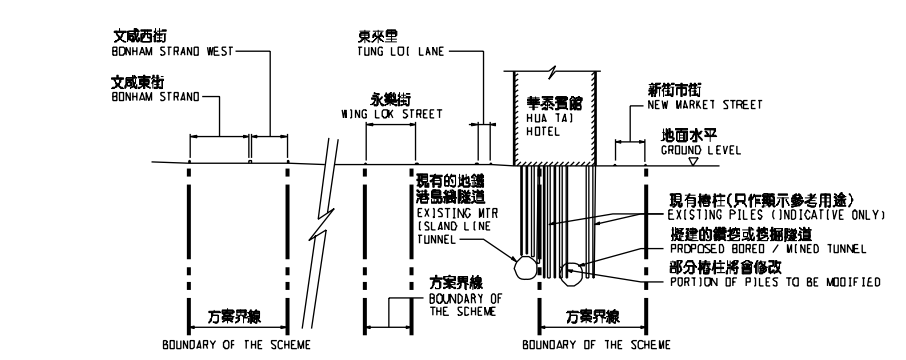
何曉雄 HO PING KLEN
 署長
 APPROVED FOR ISSUE
 30/12/2009
 發出日期 DATE OF ISSUE

圖則名稱 DRAWING TITLE
鐵路條例(第519章)
地下鐵路(「地鐵」) - 西港島線
暫時封閉部分新街市街
RAILWAYS ORDINANCE (CHAPTER 519)
MASS TRANSIT RAILWAY (MTR) - WEST ISLAND LINE
TEMPORARY CLOSURE OF SECTIONS OF NEW
MARKET STREET

圖號 DRAWING NO.
WIL/G06/0004/1
 比例 SCALE
 1:1000 (A1)
 或如顯示
 OR AS SHOWN

香港特別行政區政府
 THE GOVERNMENT OF THE HONG KONG
 SPECIAL ADMINISTRATIVE REGION
路政署
 HIGHWAYS DEPARTMENT
鐵路拓展處
 RAILWAY DEVELOPMENT OFFICE

- ### 圖例 LEGEND
- 方案界線
BOUNDARY OF THE SCHEME
 - 擬建的路軌中線
PROPOSED RAILWAY TRACK
CENTRE LINE
 - 現有的路軌中線
EXISTING RAILWAY TRACK
CENTRE LINE
 - 現有的地鐵車站
EXISTING MTR STATION
 - 擬建的鑽挖或掘層隧道
PROPOSED BORED / MINED TUNNEL



剖面圖 SECTION AA
不依比例 NOT TO SCALE