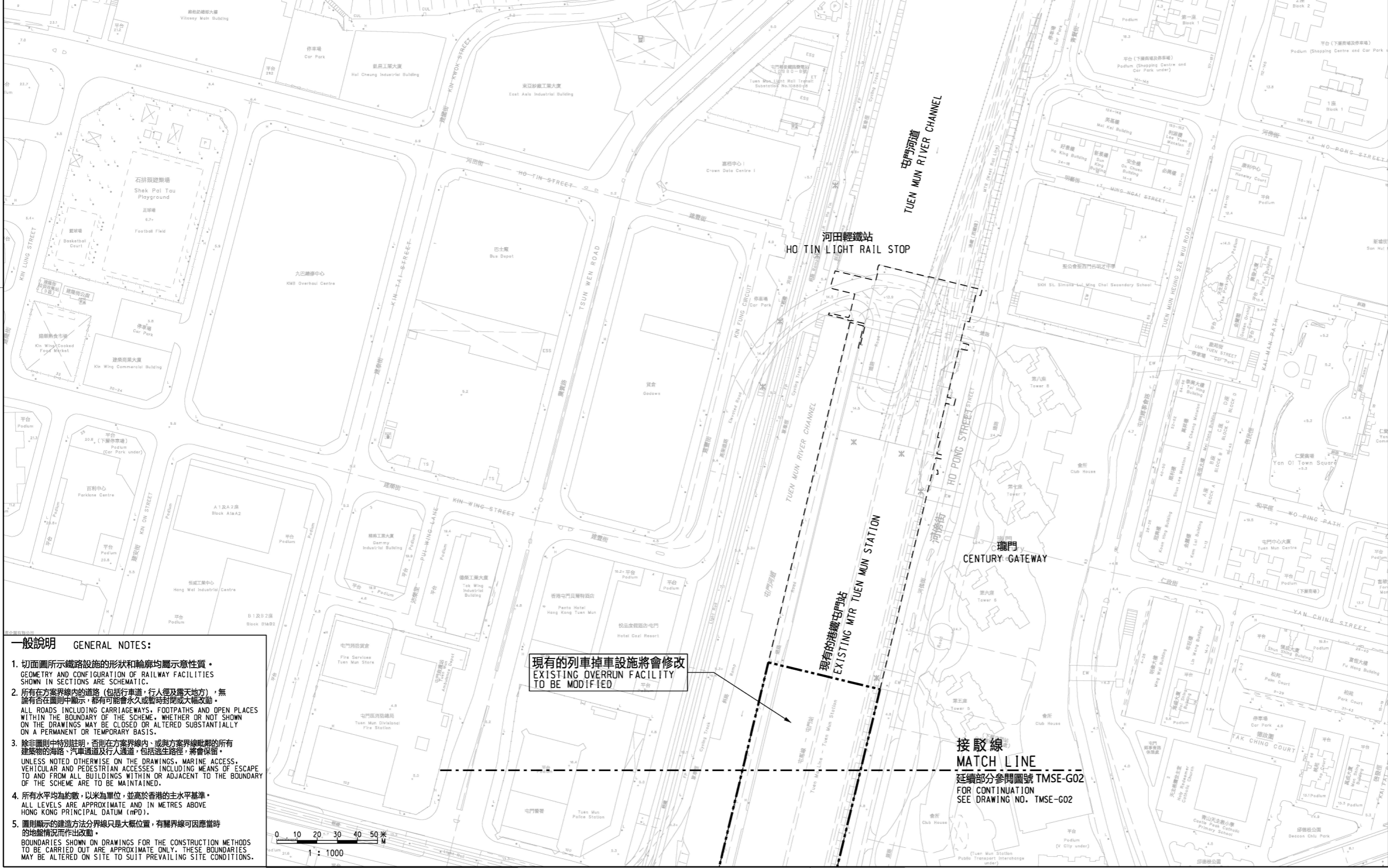


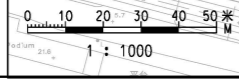
位置圖  
LOCATION PLAN

不按比例  
NOT TO SCALE



**一般說明 GENERAL NOTES:**

1. 切面圖所示鐵路設施的形狀和輪廓均屬示意性質。  
GEOMETRY AND CONFIGURATION OF RAILWAY FACILITIES SHOWN IN SECTIONS ARE SCHEMATIC.
2. 所有在方案界線內的道路（包括行車道、行人徑及露天地方），無論有否在圖則中顯示，都有可能永久或暫時封閉或大幅改動。  
ALL ROADS INCLUDING CARRIAGEWAYS, FOOTPATHS AND OPEN PLACES WITHIN THE BOUNDARY OF THE SCHEME, WHETHER OR NOT SHOWN ON THE DRAWINGS MAY BE CLOSED OR ALTERED SUBSTANTIALLY ON A PERMANENT OR TEMPORARY BASIS.
3. 除非圖則中特別註明，否則在方案界線內、或與方案界線毗鄰的所有建築物的海路、汽車通道及行人通道，包括逃生路徑，將會保留。  
UNLESS NOTED OTHERWISE ON THE DRAWINGS, MARINE ACCESS, VEHICULAR AND PEDESTRIAN ACCESSES INCLUDING MEANS OF ESCAPE TO AND FROM ALL BUILDINGS WITHIN OR ADJACENT TO THE BOUNDARY OF THE SCHEME ARE TO BE MAINTAINED.
4. 所有水平均為約數，以米為單位，並高於香港的主水平基準。  
ALL LEVELS ARE APPROXIMATE AND IN METRES ABOVE HONG KONG PRINCIPAL DATUM (mPD).
5. 圖則顯示的建造方法分界線只是大概位置，有關界線可因應當時的地盤情況而作出改動。  
BOUNDARIES SHOWN ON DRAWINGS FOR THE CONSTRUCTION METHODS TO BE CARRIED OUT ARE APPROXIMATE ONLY. THESE BOUNDARIES MAY BE ALTERED ON SITE TO SUIT PREVAILING SITE CONDITIONS.



1 : 1000

現有的列車掉車設施將會修改  
EXISTING OVERRUN FACILITY TO BE MODIFIED

接駁線  
MATCH LINE  
延續部分參閱圖號 TMSE-G02  
FOR CONTINUATION  
SEE DRAWING NO. TMSE-G02

- 圖例 LEGEND:**
- 方案界線  
BOUNDARY OF THE SCHEME
  - 擬建的鐵路車站及其設施  
PROPOSED RAILWAY STATION AND ASSOCIATED FACILITIES
  - 現有的港鐵車站及輕鐵站  
EXISTING MTR STATION AND LIGHT RAIL STOP
  - 擬設置地盤設施的臨時施工區  
PROPOSED TEMPORARY WORKS AREA FOR SITE FACILITIES
  - 現有的行人天橋將受影響  
EXISTING FOOTBRIDGE TO BE AFFECTED
  - 可能在其上進行填海工程或其他工程的政府前濱或海床  
GOVERNMENT FORESHORE OR SEABED OVER OR UPON WHICH RECLAMATION OR OTHER WORKS MAY BE CARRIED OUT
  - +18.0  
以主水平基準為依據之擬建路軌大致水平 (米)  
PROPOSED APPROXIMATE TRACK LEVEL IN m P.D.

修訂表  
TABLE OF AMENDMENTS

修改 REV	日期 DATE	繪圖 BY	核對 SUB	負責 APP	說明 DESCRIPTION

SIGNED  
林雨舟 LAM YU CHAU  
路政署  
鐵路拓展處處長 (1)  
GOVERNMENT ENGINEER/  
RAILWAY DEVELOPMENT (1)  
HIGHWAYS DEPARTMENT

31 DEC 2021  
發出日期 DATE OF ISSUE

圖則名稱 DRAWING TITLE  
鐵路條例 (第519章)  
屯門南延線  
總體規劃圖則 8頁的第1頁

RAILWAYS ORDINANCE (CHAPTER 519)  
TUEN MUN SOUTH EXTENSION  
GENERAL LAYOUT PLAN SHEET 1 OF 8

圖號 DRAWING NO.  
TMSE-G01

比例 SCALE  
1:1000 (A1)  
或如圖示  
AS SHOWN

香港特別行政區政府  
THE GOVERNMENT OF THE HONG KONG  
SPECIAL ADMINISTRATIVE REGION

路政署  
HIGHWAYS DEPARTMENT

鐵路拓展處  
RAILWAY DEVELOPMENT OFFICE