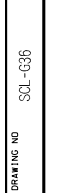


DRAWING NO. SCL-G36

OUR



SECTION BD1
NOT TO SCALE

SECTION BC
NOT TO SCALE

SECTION BE
NOT TO SCALE

SECTION BD1
NOT TO SCALE

SECTION BC
NOT TO SCALE

SECTION BE
NOT TO SCALE

SECTION BD1
NOT TO SCALE

SECTION BC
NOT TO SCALE

SECTION BE
NOT TO SCALE

SECTION BD1
NOT TO SCALE

SECTION BC
NOT TO SCALE

SECTION BE
NOT TO SCALE

SECTION BD1
NOT TO SCALE

SECTION BC
NOT TO SCALE

SECTION BE
NOT TO SCALE

SECTION BD1
NOT TO SCALE

SECTION BC
NOT TO SCALE

SECTION BE
NOT TO SCALE

SECTION BD1
NOT TO SCALE

SECTION BC
NOT TO SCALE

SECTION BE
NOT TO SCALE

SECTION BD1
NOT TO SCALE

SECTION BC
NOT TO SCALE

SECTION BE
NOT TO SCALE

SECTION BD1
NOT TO SCALE

SECTION BC
NOT TO SCALE

SECTION BE
NOT TO SCALE

SECTION BD1
NOT TO SCALE

SECTION BC
NOT TO SCALE

SECTION BE
NOT TO SCALE

SECTION BD1
NOT TO SCALE

SECTION BC
NOT TO SCALE

SECTION BE
NOT TO SCALE

SECTION BD1
NOT TO SCALE

SECTION BC
NOT TO SCALE

SECTION BE
NOT TO SCALE

SECTION BD1
NOT TO SCALE

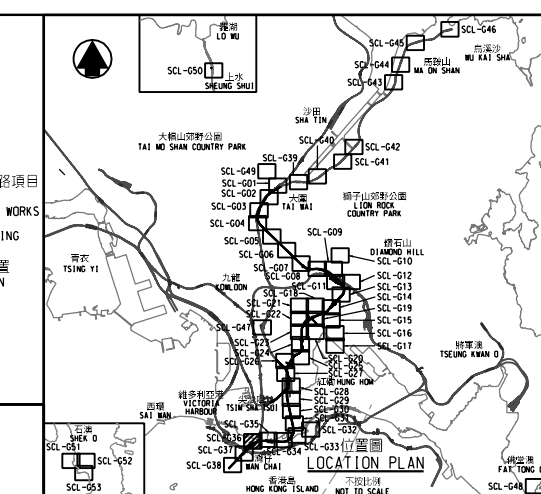
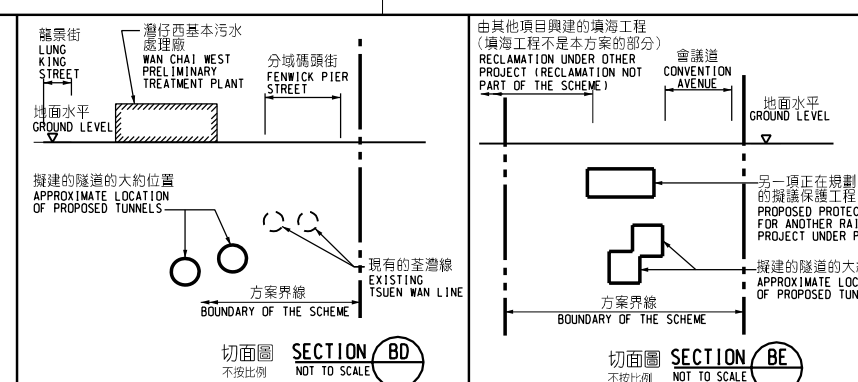
SECTION BC
NOT TO SCALE

SECTION BE
NOT TO SCALE

SECTION BD1
NOT TO SCALE

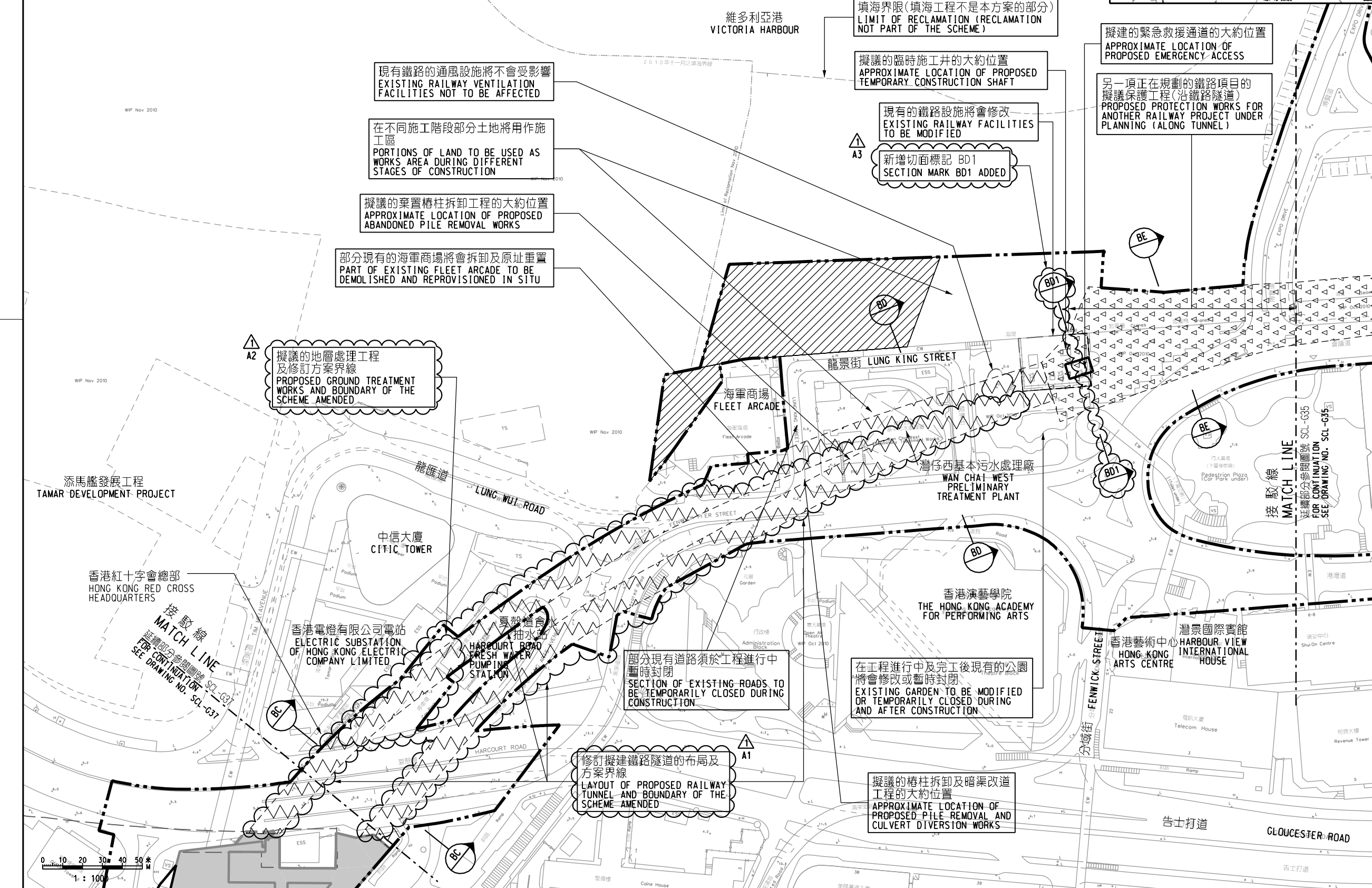
SECTION BC
NOT TO SCALE

SECTION BE
NOT TO SCALE



圖例 LEGEND

- 方案界線
BOUNDARY OF THE SCHEME
- 擬建的鐵路車站及其他鐵路設施(地下)
PROPOSED RAILWAY STATION AND OTHER RAILWAY FACILITIES (UNDERGROUND)
- 擬建的車站 / 車站入口 / 通風大樓 / 通風井
其他鐵路設施或永久建築物
PROPOSED RAILWAY STATION/STATION ENTRANCES/VENTILATION BUILDINGS/VENTILATION SHAFTS/OTHER RAILWAY FACILITIES OR PERMANENT STRUCTURES
- 現有的車站及其他鐵路設施
EXISTING STATION AND OTHER RAILWAY FACILITIES
- 擬採用鑽孔或鑽掘的鐵路設施或隧道(地下)
PROPOSED RAILWAY FACILITIES/TUNNEL BY BORED/MINED/DRILL AND BLAST METHOD (UNDERGROUND)
- 擬採用明挖法興建的鐵路設施或隧道(地下)
PROPOSED RAILWAY FACILITIES/TUNNEL BY CUT-AND-COVER METHOD (UNDERGROUND)
- 可能永久封閉的道路(包括行人道、行人徑及露天地方)
WHICH MAY BE CLOSED PERMANENTLY
- 擬設置地盤設施的臨時施工區
PROPOSED TEMPORARY WORKS AREA FOR SITE FACILITIES
- 擬於政府前濱或海床設置地盤設施的臨時施工區
(可能在其上進行填海工程(非為形成土地)或其他工程)
PROPOSED TEMPORARY WORKS AREA FOR SITE FACILITIES ON GOVERNMENT FORESHORE OR SEA BED (OVER OR UPON WHICH RECLAMATION (NOT FOR THE PURPOSE OF FORMING LAND) OR OTHER WORKS MAY BE CARRIED OUT)
- 擬建的行人天橋 / 扶手電梯 / 升降機 / 樓梯
PROPOSED FOOTBRIDGE/ESCALATOR/LIFT/STAIRCASE
- 擬建的有蓋行人通道
PROPOSED COVERED WALKWAY
- 擬於政府前濱或海床採用明挖法興建的鐵路設施或隧道
(可能在其上進行填海工程(非為形成土地)或其他工程)
PROPOSED RAILWAY FACILITIES/TUNNEL BY CUT-AND-COVER METHOD ON GOVERNMENT FORESHORE OR SEA BED (OVER OR UPON WHICH TEMPORARY RECLAMATION (FOR THE PURPOSE OF FORMING LAND) OR OTHER WORKS MAY BE CARRIED OUT)
- 擬於政府前濱或海床採用鑽孔或鑽掘法興建的鐵路設施或隧道(包括保護層 / 護層護石)
(可能在其上進行填海工程(非為形成土地)或其他工程)
PROPOSED RAILWAY FACILITIES/TUNNEL (INCLUDING PROTECTION LAYER/ROCK ARMOUR) BY BORED/TUNNEL METHOD ON GOVERNMENT FORESHORE OR SEA BED (OVER OR UPON WHICH RECLAMATION (NOT FOR THE PURPOSE OF FORMING LAND) OR OTHER WORKS MAY BE CARRIED OUT)
- 擬建於保護結構的鐵路設施 / 隧道(地下)
PROPOSED RAILWAY FACILITIES/TUNNELS (UNDERGROUND) AT PROTECTION STRUCTURES
- 擬建於沙中至中環線及另一項正在規劃的鐵路項目(下稱「另一項鐵路項目」)的鐵路設施(地下) / 車站 / 車站大樓 / 車站入口 / 通風大樓 / 通風井 / 其他鐵路設施或永久建築物(下稱「設施」) / 設施的布局已刊載於另一項鐵路項目方案內
PROPOSED RAILWAY TUNNEL (UNDERGROUND)/RAILWAY STATION/STATION CONCOURSE/STATION ENTRANCES/VENTILATION BUILDINGS/VENTILATION SHAFTS/OTHER RAILWAY FACILITIES OR PERMANENT STRUCTURES (HEREINAFTER REFERRED TO AS "THE FACILITIES") FOR SHATIN TO CENTRAL LINK AND ANOTHER RAILWAY PROJECT UNDER PLANNING (HEREINAFTER REFERRED TO AS "ANOTHER RAILWAY PROJECT"); THE LAYOUT OF THE FACILITIES IS GAZETTED UNDER ANOTHER RAILWAY PROJECT
- 受影響的政府前濱或海床的大約範圍
APPROXIMATE EXTENT OF AFFECTED GOVERNMENT FORESHORE OR SEA BED
- 圖則修改
DRAWING REVISION
- A1
修訂參考編號(參考憲報公告)
AMENDMENT REFERENCE NUMBER (SEE GAZETTE NOTICE)
- 修訂範圍
AMENDMENT AREA



現有鐵路的通風設施將不會受影響
EXISTING RAILWAY VENTILATION FACILITIES NOT TO BE AFFECTED

在不同施工階段部分土地將用作施工區
PORTIONS OF LAND TO BE USED AS WORKS AREA DURING DIFFERENT STAGES OF CONSTRUCTION

擬議的棄置樁柱拆卸工程的大約位置
APPROXIMATE LOCATION OF PROPOSED ABANDONED PILE REMOVAL WORKS

部分現有的海軍商場將會拆卸及原址重置
PART OF EXISTING FLEET ARCADE TO BE DEMOLISHED AND REPROVISIONED IN SITU

擬議的地層處理工程及修訂方案界線
PROPOSED GROUND TREATMENT WORKS AND BOUNDARY OF THE SCHEME AMENDED

部分現有道路須於工程進行中暫時封閉
SECTION OF EXISTING ROADS TO BE TEMPORARILY CLOSED DURING CONSTRUCTION

在工程進行中及完工後現有的公園將會修改或暫時封閉
EXISTING GARDEN TO BE MODIFIED OR TEMPORARILY CLOSED DURING AND AFTER CONSTRUCTION

修訂擬建鐵路隧道的布局及方案界線
LAYOUT OF PROPOSED RAILWAY TUNNEL AND BOUNDARY OF THE SCHEME AMENDED

擬議的樁柱拆卸及暗渠改道工程的大約位置
APPROXIMATE LOCATION OF PROPOSED PILE REMOVAL AND CULVERT DIVERSION WORKS

填海界限(填海工程不是本方案的部分)
LIMIT OF RECLAMATION (RECLAMATION NOT PART OF THE SCHEME)

擬議的臨時施工井的大約位置
APPROXIMATE LOCATION OF PROPOSED TEMPORARY CONSTRUCTION SHAFT

現有的鐵路設施將會修改
EXISTING RAILWAY FACILITIES TO BE MODIFIED

新增切面標記 BD1
SECTION MARK BD1 ADDED

擬建的緊急救援通道的大約位置
APPROXIMATE LOCATION OF PROPOSED EMERGENCY ACCESS

另一項正在規劃的鐵路項目的擬議保護工程(沿鐵路隧道)
PROPOSED PROTECTION WORKS FOR ANOTHER RAILWAY PROJECT UNDER PLANNING (ALONG TUNNEL)

添馬艦發展工程
TAMAR DEVELOPMENT PROJECT

香港紅十字會總部
HONG KONG RED CROSS HEADQUARTERS

香港電燈有限公司
ELECTRIC SUBSTATION OF HONG KONG ELECTRIC COMPANY LIMITED

真慈道食水抽水站
HARBOUR ROAD FRESH WATER PUMPING STATION

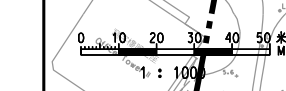
海軍商場
FLEET ARCADE

灣仔西基本污水處理廠
WAN CHAI WEST PRELIMINARY TREATMENT PLANT

香港演藝學院
THE HONG KONG ACADEMY FOR PERFORMING ARTS

香港藝術中心
HONG KONG ARTS CENTRE

灣景國際書館
HARBOUR VIEW INTERNATIONAL HOUSE



一般說明 GENERAL NOTES

1. 有關一般說明參閱圖號 SCL-G01.
FOR GENERAL NOTES, REFER TO DRAWING NO. SCL-G01.

修訂表 TABLE OF AMENDMENTS

修訂	日期	繪圖	類別	由	由	說明
REV	DATE	DRAWN	BY	APP	BY	DESCRIPTION
1	28 JUN 2011	CADD	DN	PP	PP	修訂圖號 A1 至 A3 AMENDMENT ITEMS A1 TO A3

SIGNED

批准發出
APPROVED FOR ISSUE

29 JUN 2011
發出日期 DATE OF ISSUE

馮傑榮 ERIC K. W. FUNG
路政署
鐵路拓展處處長(1)
GOVERNMENT ENGINEER/
RAILWAY DEVELOPMENT (1)
HIGHWAYS DEPARTMENT

圖則名稱 DRAWING TITLE

鐵路條例(第519章)
沙田至中環線
總體規劃圖則 53頁的第36頁

RAILWAYS ORDINANCE (CHAPTER 519)

SHATIN TO CENTRAL LINK

GENERAL LAYOUT PLAN SHEET 36 OF 53

圖號 DRAWING NO. SCL-G36

比例 SCALE 1:1000 (A1) 或如圖示 OR AS SHOWN

香港特別行政區政府
THE GOVERNMENT OF THE HONG KONG
SPECIAL ADMINISTRATIVE REGION

路政署
HIGHWAYS DEPARTMENT

鐵路拓展處
RAILWAY DEVELOPMENT OFFICE