

說明 NOTES

此圖根據第 SCL-G27 號 (修改) 圖則訂制, 分別以粉紅色和黃色標明將暫時封閉的暢運道和安運道部分行車道及行人路路面的路面。

THIS DRAWING IS PREPARED BASED ON DRAWING NO. SCL-G27 (REVISION 1) AND IS INTENDED TO SHOW SECTIONS OF CHEONG WAN ROAD AND ON WAN ROAD (HIGHLIGHTED IN PINK AND YELLOW RESPECTIVELY) OF WHICH PARTS OF THE CARRIAGEWAY AND FOOTPATH WIDTHS ARE TO TEMPORARILY CLOSED.

圖例 LEGEND

- 方案界線 BOUNDARY OF THE SCHEME
擬建的鐵路車站及其他鐵路設施(地下) PROPOSED RAILWAY STATION AND OTHER RAILWAY FACILITIES (UNDERGROUND)
擬建的車站/車站入口/邊風大樓/邊風井/其他鐵路設施或永久建築物 PROPOSED RAILWAY STATION/STATION ENTRANCES/VENTILATION BUILDINGS/VENTILATION SHAFTS/OTHER RAILWAY FACILITIES OR PERMANENT STRUCTURES

一般說明 GENERAL NOTES

1. 有關一般說明參閱圖號 SCL-G01. FOR GENERAL NOTES, REFER TO DRAWING NO. SCL-G01.

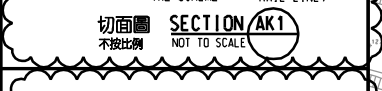
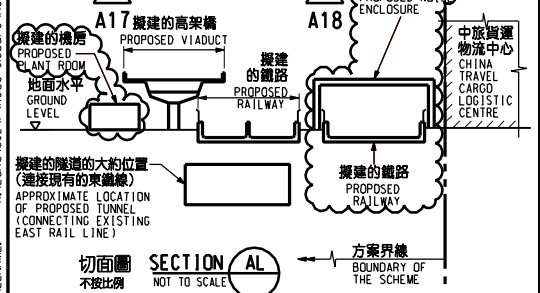
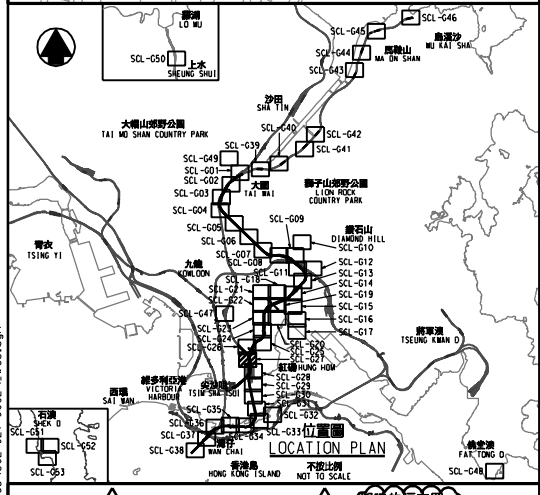
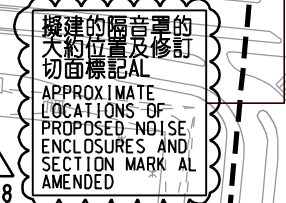
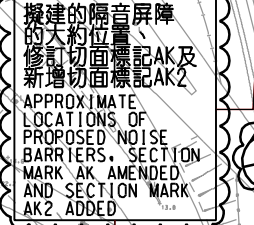
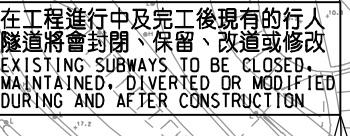
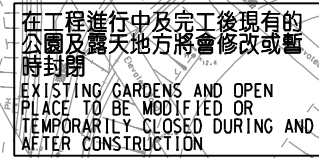
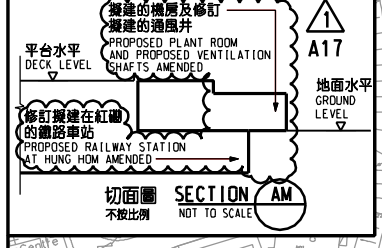
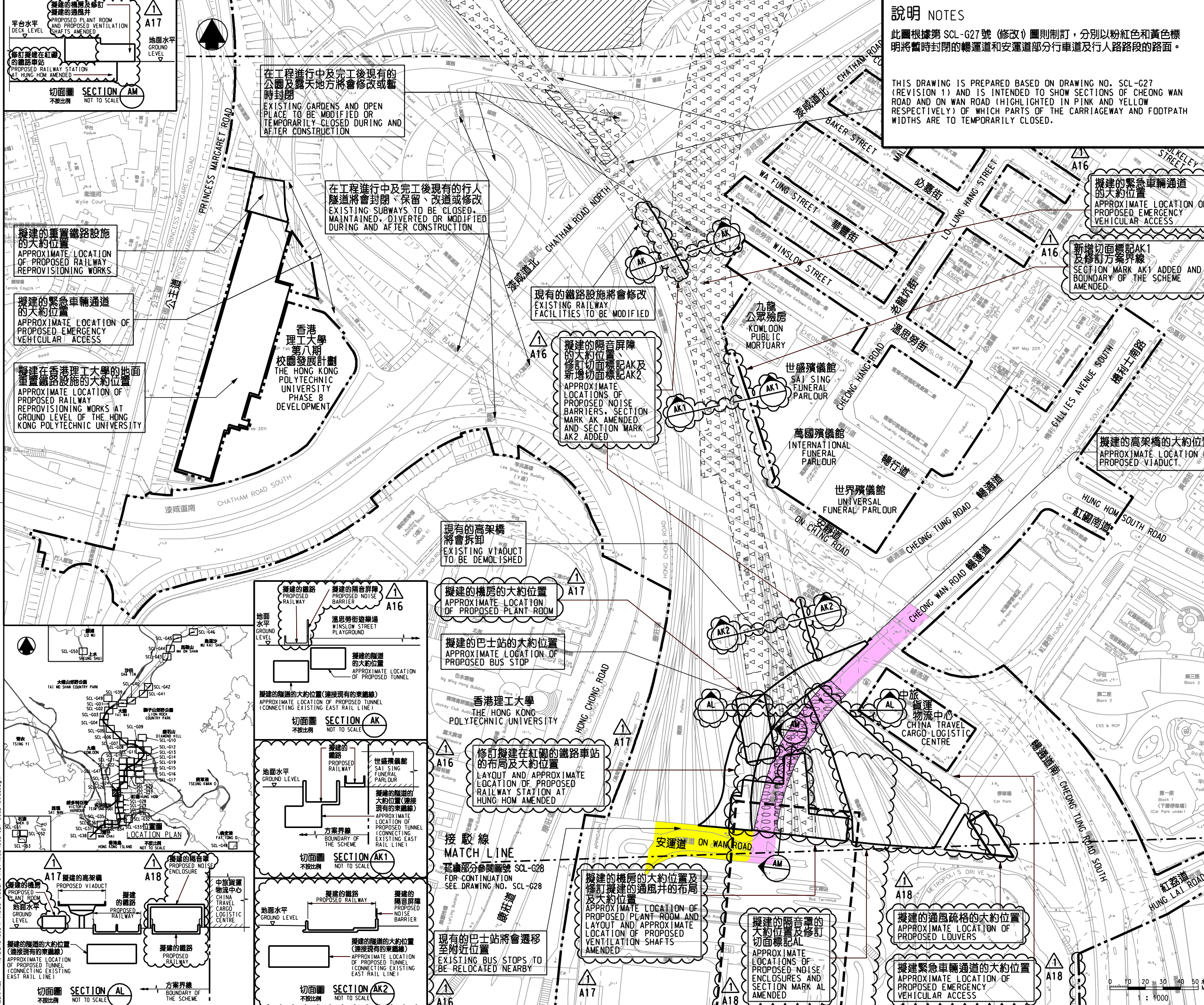
Table with 5 columns: REV, DATE, BY, SUB, APP, DESCRIPTION. Includes a 'SIGNED' section with names and dates.

簽名 SIGNED: 梁文豪 LEUNG MAN HO, JONATHAN
批准發出 APPROVED FOR ISSUE: 21/1/2014

圖則名稱 DRAWING TITLE: 鐵路條例(第519章) 沙田至中環線 暫時封閉暢運道及安運道路段

RAILWAYS ORDINANCE (CHAPTER 519) SHATIN TO CENTRAL LINK TEMPORARY CLOSURE OF SECTIONS OF CHEONG WAN ROAD AND ON WAN ROAD

香港特別行政區政府 THE GOVERNMENT OF THE HONG KONG SPECIAL ADMINISTRATIVE REGION
路政署 HIGHWAYS DEPARTMENT
鐵路拓展處 RAILWAY DEVELOPMENT OFFICE



Plot and print details including file names and dates.

