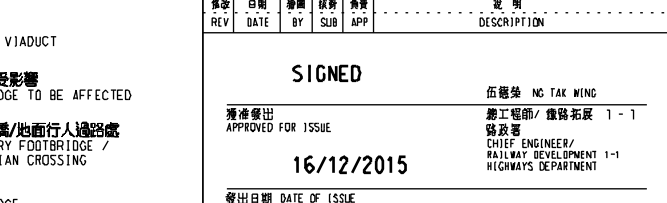
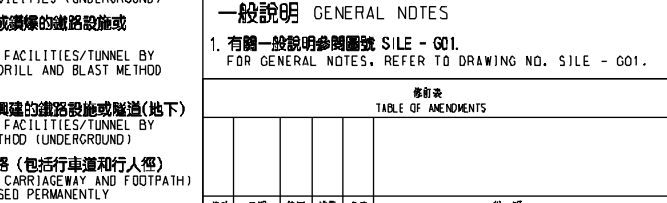
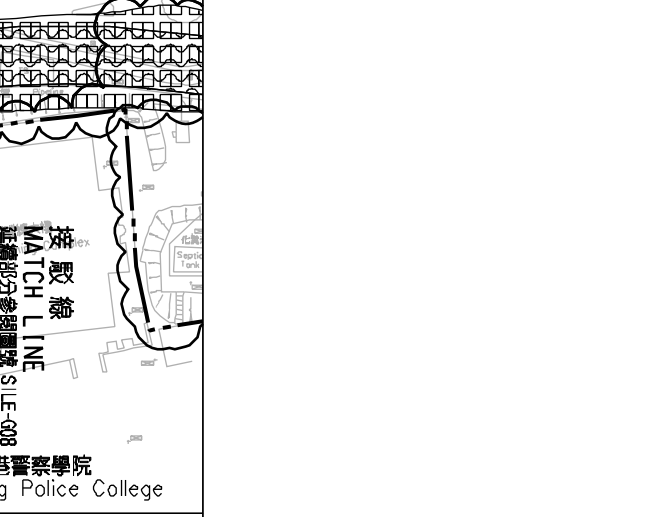
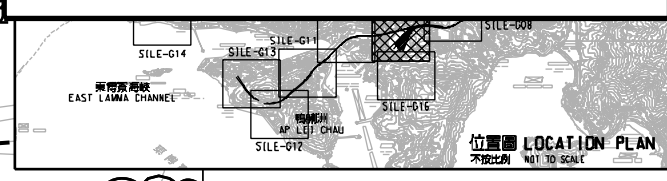


說明 NOTES

此圖根據第 SILE-G09 (修改) 圖則訂制, 以橙色標明將暫時封閉的部分南朗山道休憩處(近黃竹坑道), 以及啡色標明將暫時封閉的部分南朗山道休憩處(近香葉道)。

THIS DRAWING IS PREPARED BASED ON DRAWING NO. SILE-G09 (REVISION 1) AND IS INTENDED TO SHOW THE TEMPORARY CLOSURE OF PART OF NAM LONG SHAN ROAD SITTING-OUT AREA (NEAR WONG CHUK HANG ROAD) (HIGHLIGHTED IN ORANGE), AND THE TEMPORARY PARTIAL CLOSURE OF PART OF NAM LONG SHAN ROAD SITTING-OUT AREA (NEAR HEUNG YIP ROAD) (HIGHLIGHTED IN BROWN).



圖例 LEGEND

- 方案界線
BOUNDARY OF THE SCHEME
- 擬建的車站及其他鐵路設施
PROPOSED STATION AND OTHER RAILWAY FACILITIES
- 擬建的車站及其他鐵路設施(地下)
PROPOSED STATION AND OTHER RAILWAY FACILITIES (UNDERGROUND)
- 擬採用鑽挖或掘進或鑽爆的鐵路設施或隧道(地下)
PROPOSED RAILWAY FACILITIES/TUNNEL BY BORED / MINED / DRILL AND BLAST METHOD (UNDERGROUND)
- 擬採用明挖法興建之鐵路設施或隧道(地下)
PROPOSED RAILWAY FACILITIES/TUNNEL BY CUT-AND-COVER METHOD (UNDERGROUND)
- 可能永久封閉的道路(包括行車道和行人徑) WHICH MAY BE CLOSED PERMANENTLY
- 擬建的鐵路高架橋
PROPOSED RAILWAY VIADUCT
- 現有的行人天橋將受影響
EXISTING FOOTBRIDGE TO BE AFFECTED
- 擬建的臨時行人天橋/地面行人過路處
PROPOSED TEMPORARY FOOTBRIDGE / AT-GRADE PEDESTRIAN CROSSING
- 擬建的行人天橋
PROPOSED FOOTBRIDGE
- 可能在其上進行填海工程或其他工程的政府前灘或海床
GOVERNMENT FORESHORE OR SEABED OVER OR UPON WHICH RECLAMATION OR OTHER WORKS MAY BE CARRIED OUT
- 現有的車站及其他鐵路設施
EXISTING STATION AND OTHER RAILWAY FACILITIES
- 擬建的臨時架空輸送帶系統
PROPOSED TEMPORARY OVERHEAD CONVEYANCE SYSTEM
- 擬建的鐵路隧道入口
PROPOSED RAILWAY TUNNEL APPROACH
- 以主水平基準為依據之擬建路軌大約水平(米)
PROPOSED APPROXIMATE TRACK LEVEL IN m P.D.
- 刪則修改
DRAWING REVISION
- 修訂參考編號(參看憲報或公告)
AMENDMENT REFERENCE NUMBER (SEE GAZETTE NOTICE)
- 修訂範圍
AMENDMENT AREA

一般說明 GENERAL NOTES

1. 有關一般說明請參閱圖號 SILE - G01.
FOR GENERAL NOTES, REFER TO DRAWING NO. SILE - G01.

修訂表
TABLE OF AMENDMENTS

修訂號	日期	修訂	核對	備註
REV	DATE	BY	SUB	APP

SIGNED

核准發出
APPROVED FOR ISSUE

16/12/2015

發出日期 DATE OF ISSUE

伍德榮 NG TAK WING
工程師/鐵路發展 1-1
CHIEF ENGINEER/
RAILWAY DEVELOPMENT 1-1
HIGHWAYS DEPARTMENT

鐵路條例(第519章)
SOUTH ISLAND LINE (EAST)
TEMPORARY CLOSURE OF PARTS OF NAM LONG SHAN ROAD SITTING-OUT AREA

RAILWAYS ORDINANCE (CHAPTER 519)
SOUTH ISLAND LINE (EAST)
TEMPORARY CLOSURE OF PARTS OF NAM LONG SHAN ROAD SITTING-OUT AREA

圖號 DRAWING NO. SILE/G09/0011/1

比例 SCALE 1:1000 (A1)
或如顯示
OR AS SHOWN

香港特別行政區政府
THE GOVERNMENT OF THE HONG KONG
SPECIAL ADMINISTRATIVE REGION

路政署
HIGHWAYS DEPARTMENT

鐵路拓展處
RAILWAY DEVELOPMENT OFFICE

PLT: 0528288
PRINTED BY: ftkko
FILENAME: x:\london\p000\p000\road closure\rev\view\01signed\web\sile-g09-001-1.dgn