

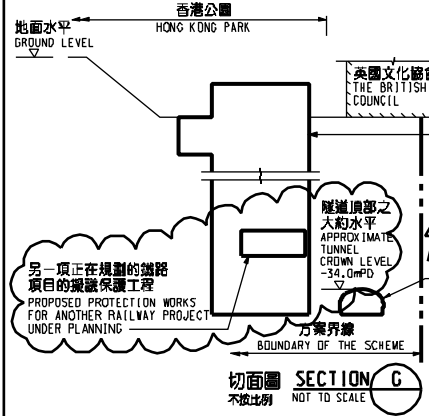
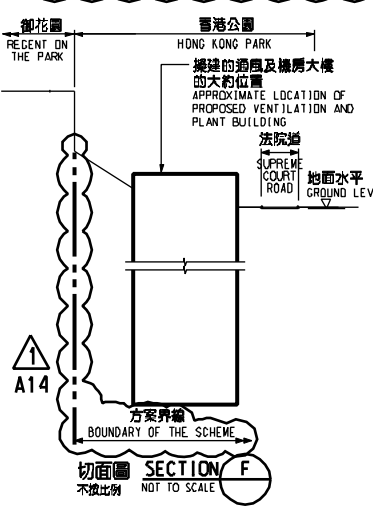
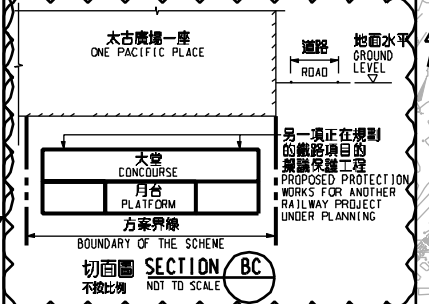
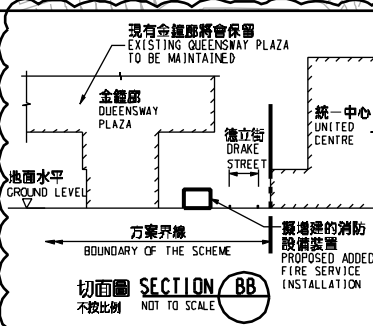
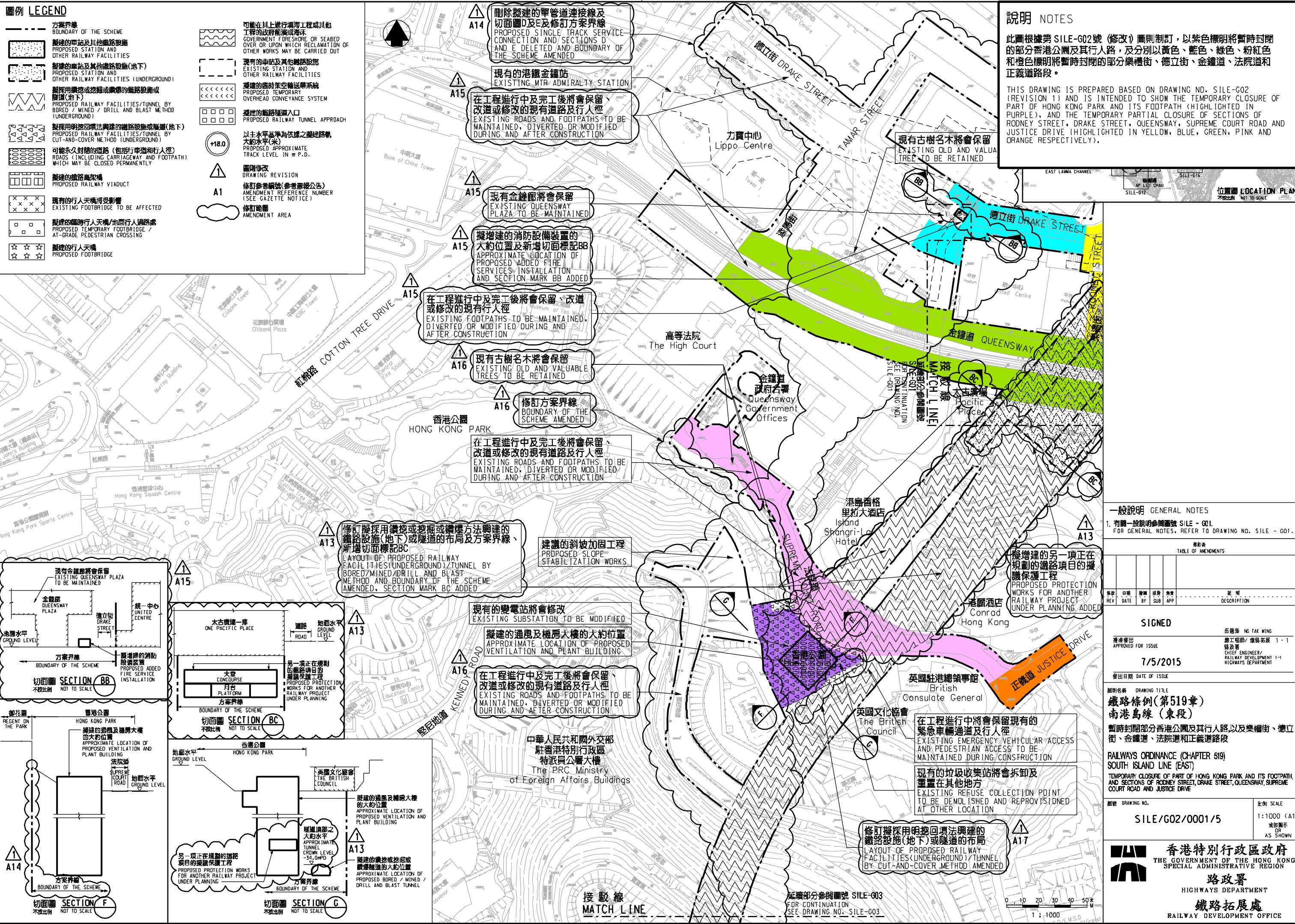
圖例 LEGEND

- 方案界線
BOUNDARY OF THE SCHEME
- 擬建的車站及其他鐵路設施
PROPOSED STATION AND OTHER RAILWAY FACILITIES
- 擬建的車站及其他鐵路設施(地下)
PROPOSED STATION AND OTHER RAILWAY FACILITIES (UNDERGROUND)
- 擬採用鑽挖或掘掘或鑽爆的鐵路設施或隧道(地下)
PROPOSED RAILWAY FACILITIES/TUNNEL BY BORED / MINED / DRILL AND BLAST METHOD (UNDERGROUND)
- 擬採用明挖回填法興建的鐵路設施或隧道(地下)
PROPOSED RAILWAY FACILITIES/TUNNEL BY CUT-AND-COVER METHOD (UNDERGROUND)
- 可能永久封閉的道路(包括行車道和行人徑)
ROADS (INCLUDING CARRIAGEWAY AND FOOTPATH) WHICH MAY BE CLOSED PERMANENTLY
- 擬建的鐵路橋樑
PROPOSED RAILWAY VIADUCT
- 現有的行人天橋將受影響
EXISTING FOOTBRIDGE TO BE AFFECTED
- 擬建的臨時行人天橋/地面行人過路處
PROPOSED TEMPORARY FOOTBRIDGE / AT-GRADE PEDESTRIAN CROSSING
- 擬建的行人天橋
PROPOSED FOOTBRIDGE
- 可能在其上進行填海工程或其他工程的政府前灘或海床
GOVERNMENT FRESH SHORE OR SEABED OVER OR UPON WHICH RECLAMATION OF OTHER WORKS MAY BE CARRIED OUT
- 現有的車站及其他鐵路設施
EXISTING STATION AND OTHER RAILWAY FACILITIES
- 擬建的臨時架空輸送帶系統
PROPOSED TEMPORARY OVERHEAD CONVEYANCE SYSTEM
- 擬建的鐵路隧道入口
PROPOSED RAILWAY TUNNEL APPROACH
- 以主水平基準為依據之擬建鐵路軌道水平(米)
PROPOSED APPROXIMATE TRACK LEVEL IN m P.D.
- 圖則修改
DRAWING REVISION
- 修訂參考編號(參考憲報公告)
AMENDMENT REFERENCE NUMBER (SEE GAZETTE NOTICE)
- 修訂範圍
AMENDMENT AREA

說明 NOTES

此圖根據第 SILE-G02 號 (修改) 圖則制訂, 以紫色標明將暫時封閉的部分香港公園及其行人路, 及分別以黃色、藍色、綠色、粉紅色和橙色標明將暫時封閉的部分樂禮街、德立街、金鐘道、法院道和正義道路段。

THIS DRAWING IS PREPARED BASED ON DRAWING NO. SILE-G02 (REVISION 1) AND IS INTENDED TO SHOW THE TEMPORARY CLOSURE OF PART OF HONG KONG PARK AND ITS FOOTPATH (HIGHLIGHTED IN PURPLE), AND THE TEMPORARY PARTIAL CLOSURE OF SECTIONS OF ROONEY STREET, DRAKE STREET, QUEENSWAY, SUPREME COURT ROAD AND JUSTICE DRIVE (HIGHLIGHTED IN YELLOW, BLUE, GREEN, PINK AND ORANGE RESPECTIVELY).



一般說明 GENERAL NOTES

1. 有關一般說明請參閱圖號 SILE - G01.
FOR GENERAL NOTES, REFER TO DRAWING NO. SILE - G01.

修訂表
TABLE OF AMENDMENTS

修訂號	日期	修訂	修訂	修訂	說明
REV	DATE	BY	SUB	APP	DESCRIPTION

SIGNED

核准發出
APPROVED FOR ISSUE

7/5/2015

發出日期 DATE OF ISSUE

伍德榮 NG TAK WING
總工程師/鐵路拓展處
CHIEF ENGINEER/RAILWAY DEVELOPMENT 1-1
發行者
RAILWAY DEVELOPMENT 1-1
HIGHWAYS DEPARTMENT

圖則名稱 DRAWING TITLE
**鐵路條例 (第519章)
南港島線 (東段)**

暫時封閉部分香港公園及其行人路, 以及樂禮街、德立街、金鐘道、法院道和正義道路段

RAILWAYS ORDINANCE (CHAPTER 519)
SOUTH ISLAND LINE (EAST)

TEMPORARY CLOSURE OF PART OF HONG KONG PARK AND ITS FOOTPATH, AND SECTIONS OF ROONEY STREET, DRAKE STREET, QUEENSWAY, SUPREME COURT ROAD AND JUSTICE DRIVE

圖號 DRAWING NO.
SILE/G02/0001/5

比例 SCALE
1:1000 (A1)
縮小顯示
AS SHOWN

香港特別行政區政府
THE GOVERNMENT OF THE HONG KONG
SPECIAL ADMINISTRATIVE REGION

路政署
HIGHWAYS DEPARTMENT

鐵路拓展處
RAILWAY DEVELOPMENT OFFICE

PLOT DRW: E:\Lib\Plot\118\vb\p118r.plt
 PRINTED BY: ftkko 07/05/2015 16:30:36
 FILENAME: x:\ton\lan\p000\p001\road_closure\rev1\ar_e\signed\web\sile-g02-0001-5.dgn