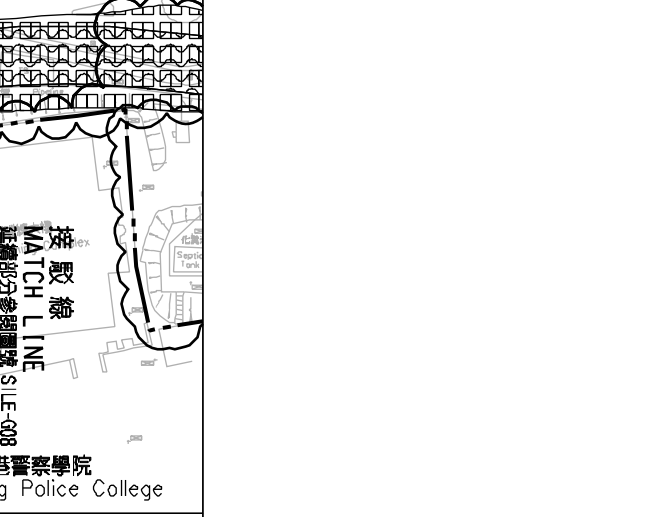
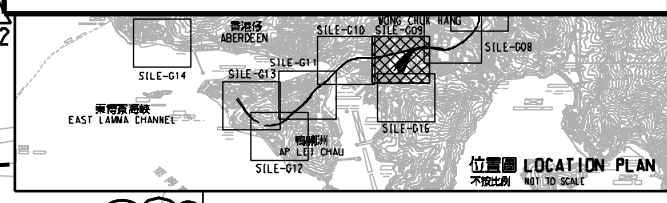


說明 NOTES

此圖根據第 SILE-G09 號 (修改) 圖則訂制, 以紅色標明將永久封閉大王爺廟西面末端附近的部分行人路, 以及黃色標明將暫時封閉大王爺廟西面末端的行人路路段。

THIS DRAWING IS PREPARED BASED ON DRAWING NO. SILE-G09 (REVISION 1) AND IS INTENDED TO SHOW THE PERMANENT CLOSURE OF PARTS OF THE FOOTPATH NEAR THE WESTERN END OF TAI WONG YE TEMPLE (HIGHLIGHTED IN RED), AND THE TEMPORARY CLOSURE OF THE SECTION OF THE FOOTPATH AT THE WESTERN END OF TAI WONG YE TEMPLE (HIGHLIGHTED IN YELLOW).



圖例 LEGEND

- 方案界線 BOUNDARY OF THE SCHEME
- 擬建的車站及其他鐵路設施 PROPOSED STATION AND OTHER RAILWAY FACILITIES
- 擬建的車站及其他鐵路設施(地下) PROPOSED STATION AND OTHER RAILWAY FACILITIES (UNDERGROUND)
- 擬採用鑽挖或掘進或鑽掘的鐵路設施或隧道(地下) PROPOSED RAILWAY FACILITIES/TUNNEL BY BORED / MINED / DRILL AND BLAST METHOD (UNDERGROUND)
- 擬採用明挖法興建之鐵路設施或隧道(地下) PROPOSED RAILWAY FACILITIES/TUNNEL BY CUT-AND-COVER METHOD (UNDERGROUND)
- 可能永久封閉的道路(包括行車道和行人徑) WHICH MAY BE CLOSED PERMANENTLY
- 擬建的鐵路高架橋 PROPOSED RAILWAY VIADUCT
- 現有的行人天橋將受影響 EXISTING FOOTBRIDGE TO BE AFFECTED
- 擬建的臨時行人天橋/地面行人過路處 PROPOSED TEMPORARY FOOTBRIDGE / AT-GRADE PEDESTRIAN CROSSING
- 擬建的行人天橋 PROPOSED FOOTBRIDGE
- 可能在進行填海工程或其他工程的政府前灘或海床 OVER OR UPON WHICH RECLAMATION OR OTHER WORKS MAY BE CARRIED OUT
- 現有的車站及其他鐵路設施 EXISTING STATION AND OTHER RAILWAY FACILITIES
- 擬建的臨時架空輸送帶系統 PROPOSED TEMPORARY OVERHEAD CONVEYANCE SYSTEM
- 擬建的鐵路隧道入口 PROPOSED RAILWAY TUNNEL APPROACH
- 以主水平基準為依據之擬建路軌大約水平(米) PROPOSED APPROXIMATE TRACK LEVEL IN m.p.d.
- 圖則修改 DRAWING REVISION
- 修訂參考編號(參看憲報或公告) AMENDMENT REFERENCE NUMBER (SEE GAZETTE NOTICE)
- 修訂範圍 AMENDMENT AREA

一般說明 GENERAL NOTES

1. 有關一般說明參閱圖號 SILE - G01. FOR GENERAL NOTES, REFER TO DRAWING NO. SILE - G01.

修訂表 TABLE OF AMENDMENTS

修訂號	日期	修訂	核對	備註	
REV	DATE	BY	SUB	APP	DESCRIPTION

SIGNED

簽發日期 DATE OF ISSUE: 30/5/2016

簽發人: 葉景輝 YUEN MOU KOK, ANTHONY
 工程師/ 鐵路發展 1-1
 簽發者: CHIEF ENGINEER / RAILWAY DEVELOPMENT 1-1
 高路政署 HIGHWAYS DEPARTMENT

鐵路條例 (第519章) 南港島線 (東段)
 永久封閉黃竹坑大王爺廟附近的部分行人路; 以及暫時封閉黃竹坑大王爺廟附近的行人路路段

RAILWAYS ORDINANCE (CHAPTER 519) SOUTH ISLAND LINE (EAST)
 PERMANENT CLOSURE OF PARTS OF THE FOOTPATH NEAR TAI WONG YE TEMPLE AT WONG CHUK HANG AND TEMPORARY CLOSURE OF A SECTION OF THE FOOTPATH NEAR TAI WONG YE TEMPLE AT WONG CHUK HANG

圖號 DRAWING NO. SILE/G09/0006/5

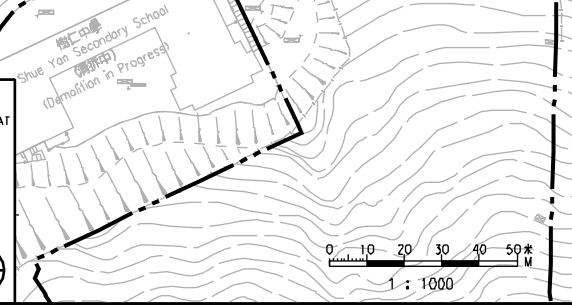
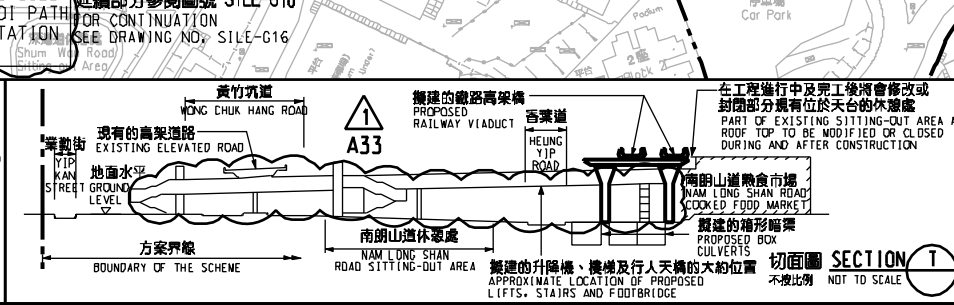
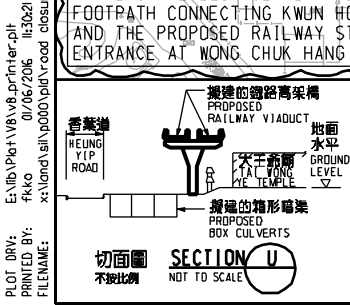
比例 SCALE 1:1000 (A1)

修訂顯示 OR AS SHOWN

香港特別行政區政府
 THE GOVERNMENT OF THE HONG KONG
 SPECIAL ADMINISTRATIVE REGION

路政署
 HIGHWAYS DEPARTMENT

鐵路拓展處
 RAILWAY DEVELOPMENT OFFICE



PLT: 01/06/2016
 PRINTED BY: ftkko
 FILENAME: x:\hono\sh\p000\p01\p01\road closure\rev\1\1\1\3021