

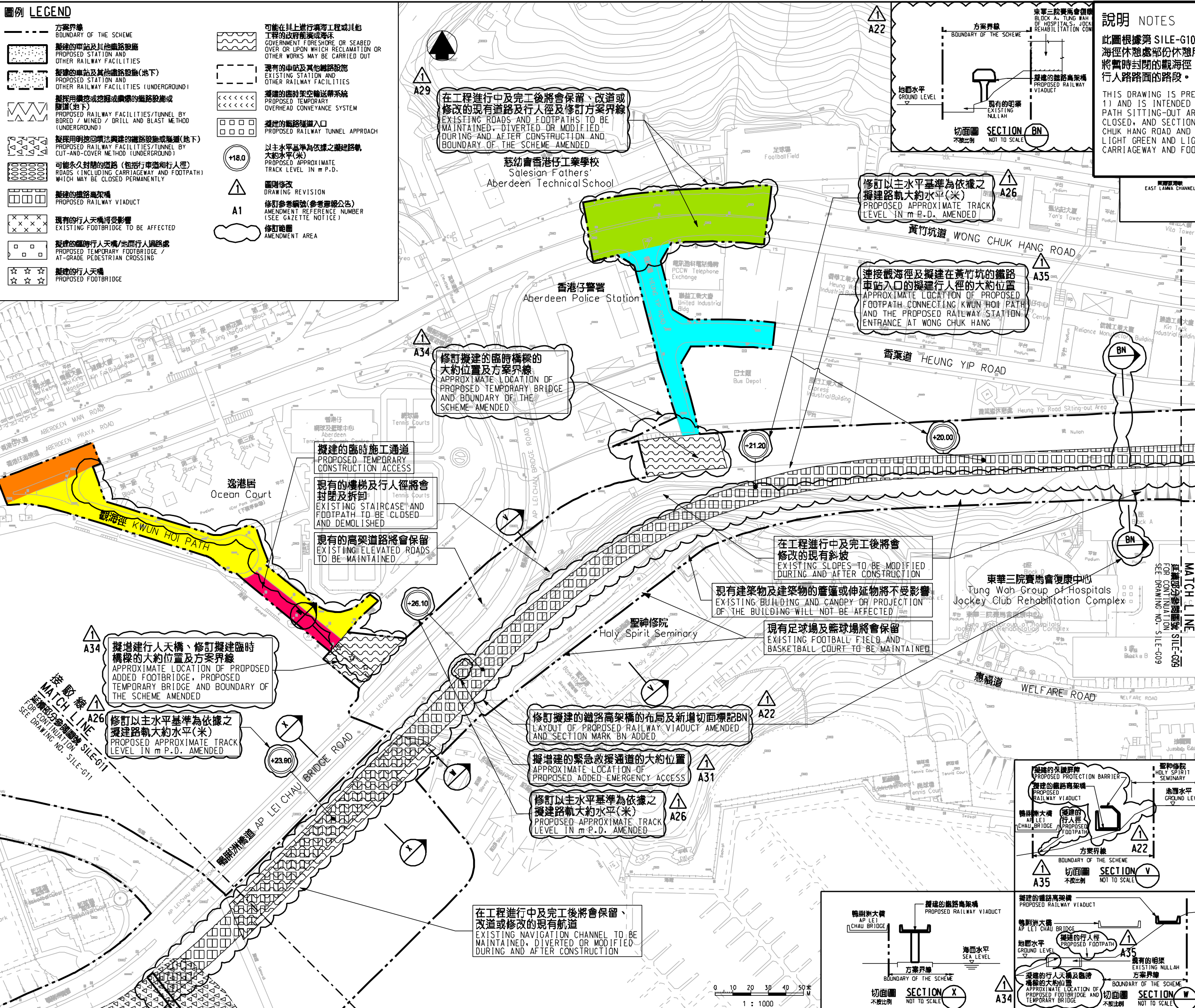
圖例 LEGEND

- 方案界線
BOUNDARY OF THE SCHEME
- 擬建的車站及其他鐵路設施
PROPOSED STATION AND OTHER RAILWAY FACILITIES
- 擬建的車站及其他鐵路設施(地下)
PROPOSED STATION AND OTHER RAILWAY FACILITIES (UNDERGROUND)
- 擬採用鑽挖或掘鑽的鐵路設施或隧道(地下)
PROPOSED RAILWAY FACILITIES/TUNNEL BY BORED / MINED / DRILL AND BLAST METHOD (UNDERGROUND)
- 擬採用明挖回填法興建的鐵路設施或隧道(地下)
PROPOSED RAILWAY FACILITIES/TUNNEL BY CUT-AND-COVER METHOD (UNDERGROUND)
- 可能永久封閉的道路(包括行車道和行人徑)
ROADS (INCLUDING CARRIAGEWAY AND FOOTPATH) WHICH MAY BE CLOSED PERMANENTLY
- 擬建的鐵路高架橋
PROPOSED RAILWAY VIADUCT
- 現有的行人天橋將受影響
EXISTING FOOTBRIDGE TO BE AFFECTED
- 擬建的臨時行人天橋/地面行人過路處
PROPOSED TEMPORARY FOOTBRIDGE / AT-GRADE PEDESTRIAN CROSSING
- 擬建的行人天橋
PROPOSED FOOTBRIDGE
- 可能在其上進行填海工程或其他工程的政府前灘或海面
GOVERNMENT FORE SHORE OR SEA BED OVER OR UPON WHICH RECLAMATION OR OTHER WORKS MAY BE CARRIED OUT
- 現有的車站及其他鐵路設施
EXISTING STATION AND OTHER RAILWAY FACILITIES
- 擬建的臨時空輸系統
PROPOSED TEMPORARY OVERHEAD CONVEYANCE SYSTEM
- 擬建的鐵路隧道入口
PROPOSED RAILWAY TUNNEL APPROACH
- 以主水平基準為依據之擬建路軌大約水平(米)
PROPOSED APPROXIMATE TRACK LEVEL IN m P.D.
- 圖則修改
DRAWING REVISION
- 修訂參考編號(參考憲報公告) 修訂參考編號(參考憲報公告)
AMENDMENT REFERENCE NUMBER (SEE GAZETTE NOTICE)
- 修訂範圍
AMENDMENT AREA

說明 NOTES

此圖根據第 SILE-G10 號(修改)圖則訂制, 以紅色標明將暫時封閉的觀海徑休憩處部份休憩用地, 及分別以黃色、橙色、淺綠色和淺藍色標明將暫時封閉的觀海徑、香港仔海傍道、黃竹坑道和香葉道部分行車道及行人路路面的路段。

THIS DRAWING IS PREPARED BASED ON DRAWING NO. SILE-G10 (REVISION 1) AND IS INTENDED TO SHOW PARTS OF THE OPEN SPACE IN KWUN HOI PATH SITTING-OUT AREA (HIGHLIGHTED IN RED) TO BE TEMPORARILY CLOSED, AND SECTIONS OF KWUN HOI PATH, ABERDEEN PRAYA ROAD, WONG CHUK HANG ROAD AND HEUNG YIP ROAD (HIGHLIGHTED IN YELLOW, ORANGE, LIGHT GREEN AND LIGHT BLUE RESPECTIVELY) OF WHICH PARTS OF THE CARRIAGEWAY AND FOOTPATH WIDTHS ARE TO BE TEMPORARILY CLOSED.



一般說明 GENERAL NOTES

1. 有關一般說明參閱圖號 SILE - G01. FOR GENERAL NOTES, REFER TO DRAWING NO. SILE - G01.

修訂表
TABLE OF AMENDMENTS

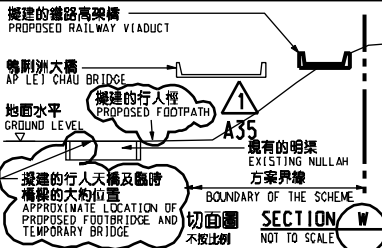
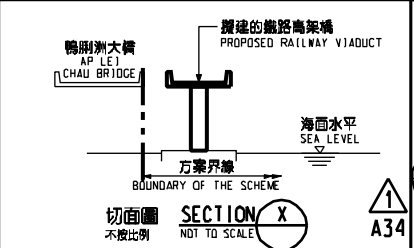
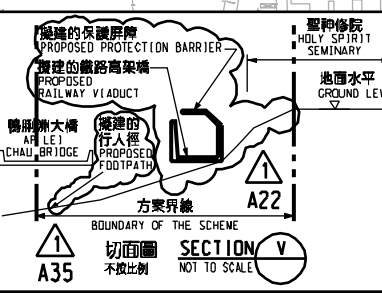
修訂號 REV	日期 DATE	修訂 BY	修訂 SUB	修訂 APP	說明 DESCRIPTION

SIGNED

簽發日期 DATE OF ISSUE: 2/5/2013

簽署人 NG TAK WING
職銜 工程師 / 鐵路拓展處

簽發人
CHIEF ENGINEER / RAILWAY DEVELOPMENT OFFICE



鐵路條例(第519章)
RAILWAYS ORDINANCE (CHAPTER 519)

南港島線(東段)
SOUTH ISLAND LINE (EAST)

暫時封閉觀海徑休憩處部份休憩用地, 及部分觀海徑、香港仔海傍道、黃竹坑道和香葉道

TEMPORARY CLOSURE OF THE OPEN SPACE IN KWUN HOI PATH SITTING-OUT AREA AND SECTIONS OF KWUN HOI PATH, ABERDEEN PRAYA ROAD, WONG CHUK HANG ROAD AND HEUNG YIP ROAD

圖號 DRAWING NO.: SILE/G10/0003/2

比例 SCALE: 1:1000 (A1) 或前指示 OR AS SHOWN

香港特別行政區政府
THE GOVERNMENT OF THE HONG KONG SPECIAL ADMINISTRATIVE REGION

路政署
HIGHWAYS DEPARTMENT

鐵路拓展處
RAILWAY DEVELOPMENT OFFICE

Plot: 0003/2.dgn
Printed By: ftko
File Name: x:\tcm\an\p00\p01\road_closure\rev\1\view\04920