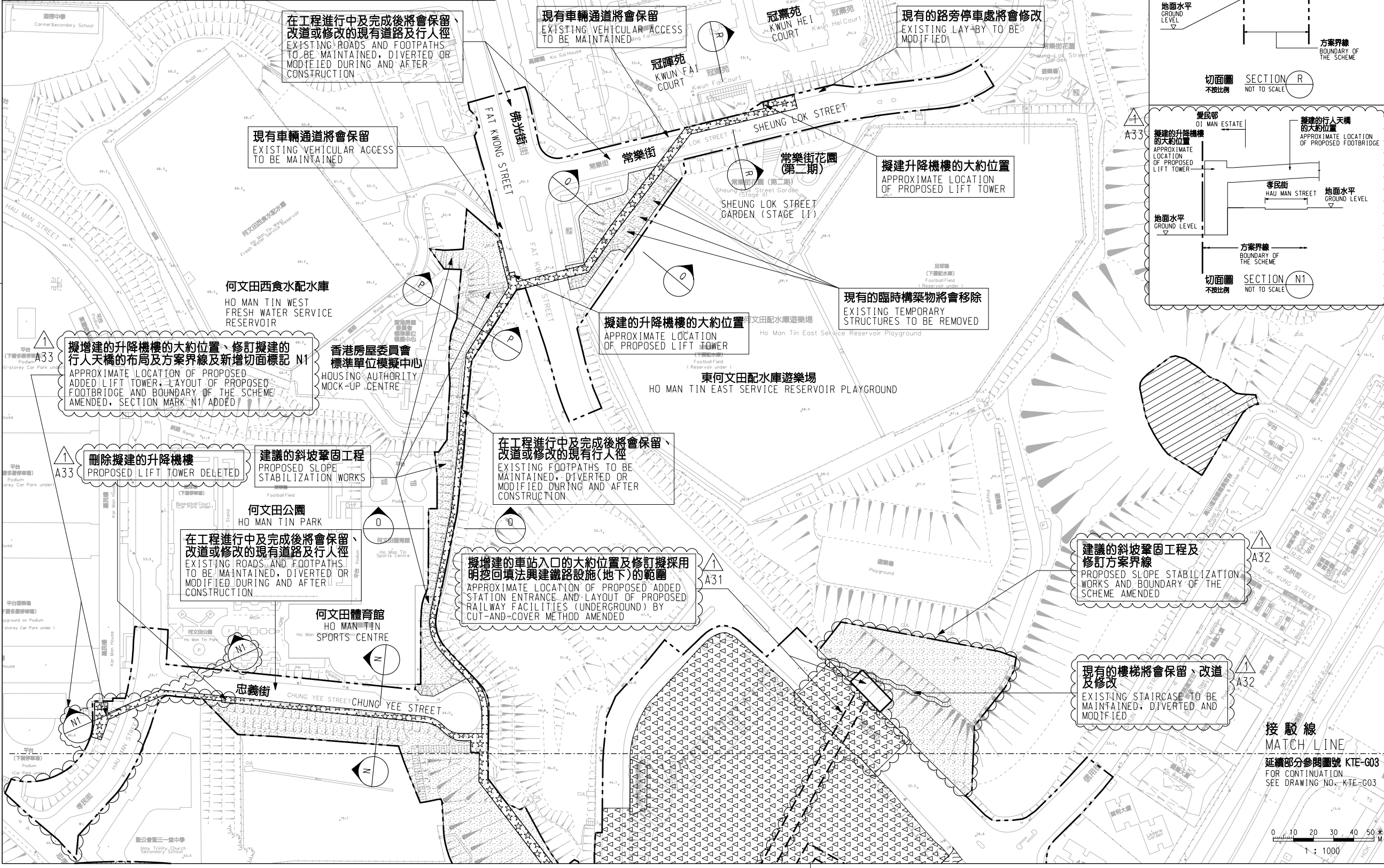
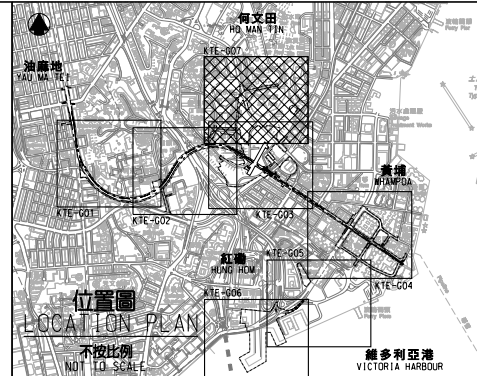
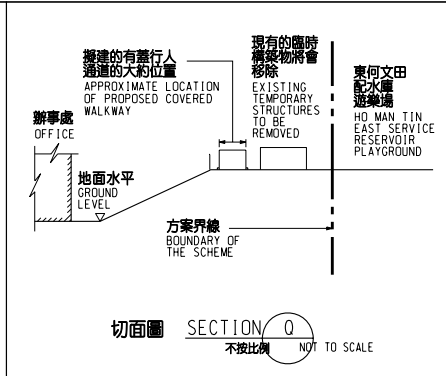
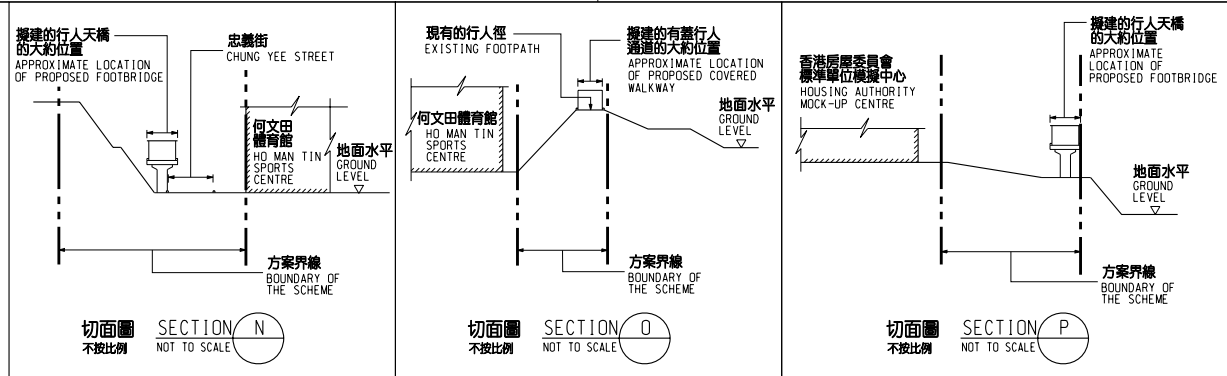
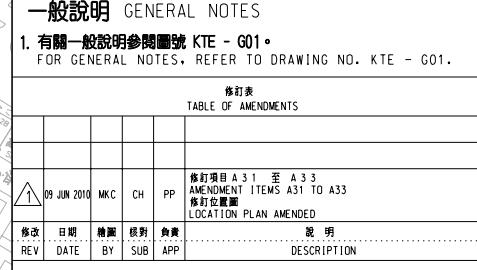
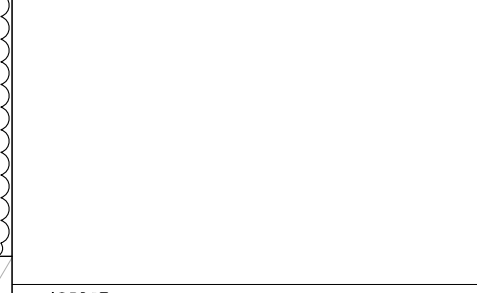


圖例 LEGEND

- | | | | |
|--|---|--|---|
| | 方案界線
BOUNDARY OF THE SCHEME | | 擬建的行人天橋/蓋行人通道
PROPOSED FOOTBRIDGE / COVERED WALKWAY |
| | 擬建的鐵路車站及其他鐵路設施
PROPOSED RAILWAY STATION AND OTHER RAILWAY FACILITIES | | 擬建的地下臨時建築通道
PROPOSED TEMPORARY UNDERGROUND CONSTRUCTION ACCESS |
| | 擬建的鐵路車站及其他鐵路設施(地下)
PROPOSED RAILWAY STATION AND OTHER RAILWAY FACILITIES (UNDERGROUND) | | 擬設置地盤設施的臨時施工區
PROPOSED TEMPORARY WORKS AREA FOR SITE FACILITIES |
| | 擬建的鑽挖或掘鑽或鑽爆隧道(地下)
PROPOSED BORED / MINED / DRILL AND BLAST TUNNEL (UNDERGROUND) | | 擬用作興建鐵路設施的臨時工地
PROPOSED TEMPORARY WORKS SITES FOR CONSTRUCTION OF RAILWAY FACILITIES |
| | 擬採用明挖回填法興建的鐵路設施(地下)
PROPOSED RAILWAY FACILITIES BY CUT-AND-COVER METHOD (UNDERGROUND) | | 可能永久封閉的道路
ROADS WHICH MAY BE CLOSED PERMANENTLY |
| | 現有的車站及其他鐵路設施
EXISTING STATION AND OTHER RAILWAY FACILITIES | | 可能在工程期間封閉的道路和行人徑
ROADS AND FOOTPATHS PROPOSED TO BE CLOSED DURING CONSTRUCTION |
| | 圖則修改
DRAWING REVISION | | 修訂範圍
AMENDMENT AREA |
| | 修訂參考編號(參考憲報公告)
AMENDMENT REFERENCE NUMBER (SEE GAZETTE NOTICE) | | |



- 一般說明 GENERAL NOTES**
- 切面圖所示鐵路設施的形狀和輪廓均屬示意性質。GEOMETRY AND CONFIGURATION OF RAILWAY FACILITIES SHOWN IN SECTIONS ARE SCHEMATIC.
 - 所有在方案界線內的道路(包括行車道、行人徑及露天地方),無論有否在圖則中顯示,都有可能永久或暫時封閉或大幅改動。ALL ROADS INCLUDING CARRIAGEWAYS, FOOTPATHS AND OPEN PLACES WITHIN THE BOUNDARY OF THE SCHEME, WHETHER OR NOT SHOWN ON THE DRAWINGS, MAY BE CLOSED OR ALTERED SUBSTANTIALLY ON A PERMANENT OR TEMPORARY BASIS.
 - 除非圖則中特別註明,否則在方案界線內,或與方案界線毗鄰的所有建築物的汽車通道及行人通道,包括逃生路徑,將會保留。UNLESS NOTED OTHERWISE ON THE DRAWINGS, VEHICULAR AND PEDESTRIAN ACCESSES INCLUDING MEANS OF ESCAPE TO AND FROM ALL BUILDINGS WITHIN OR ADJACENT TO THE BOUNDARY OF THE SCHEME ARE TO BE MAINTAINED.
 - 所有水平均為約數,以米為單位,並高於香港的主水平基準。ALL LEVELS ARE APPROXIMATE AND IN METRES ABOVE HONG KONG PRINCIPAL DATUM (mPD).
 - 圖則顯示的建造方法分界線只是大概位置,有關界線可因應當時的地盤情況而作出改動。BOUNDARIES SHOWN ON DRAWINGS FOR THE CONSTRUCTION METHODS TO BE CARRIED OUT ARE APPROXIMATE ONLY. THESE BOUNDARIES MAY BE ALTERED ON SITE TO SUIT PREVAILING SITE CONDITIONS.



一般說明 GENERAL NOTES

- 有關一般說明參閱圖號 KTE - G01。FOR GENERAL NOTES, REFER TO DRAWING NO. KTE - G01.

修訂表				
TABLE OF AMENDMENTS				
修訂	日期	繪圖	核對	負責
REV	DATE	BY	SUB	APP
	09 JUN 2010	MCC	CH	PP

修訂項目 A31 至 A33
AMENDMENT ITEMS A31 TO A33
修訂位置圖
LOCATION PLAN AMENDED

SIGNED

陳志恩 CHAN CHI YAN, HENRY

批准發出
APPROVED FOR ISSUE

11 JUN 2010

發出日期 DATE OF ISSUE

圖則名稱 DRAWING TITLE

鐵路條例(第519章)
- 觀塘線延伸
總體規劃圖則 8頁的第7頁

RAILWAYS ORDINANCE (CHAPTER 519)
- KWUN TONG LINE EXTENSION

GENERAL LAYOUT PLAN SHEET 7 OF 8

圖號 DRAWING NO. KTE-G07

比例 SCALE 1:1000 (A1) 或如顯示 AS SHOWN

香港特別行政區政府
THE GOVERNMENT OF THE HONG KONG SPECIAL ADMINISTRATIVE REGION

路政署
HIGHWAYS DEPARTMENT

鐵路拓展處
RAILWAY DEVELOPMENT OFFICE