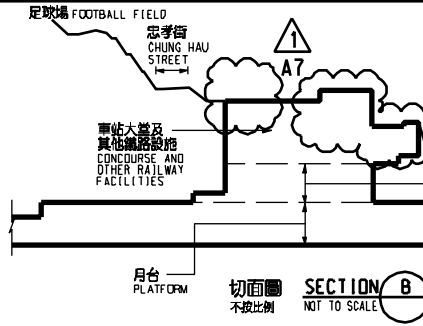


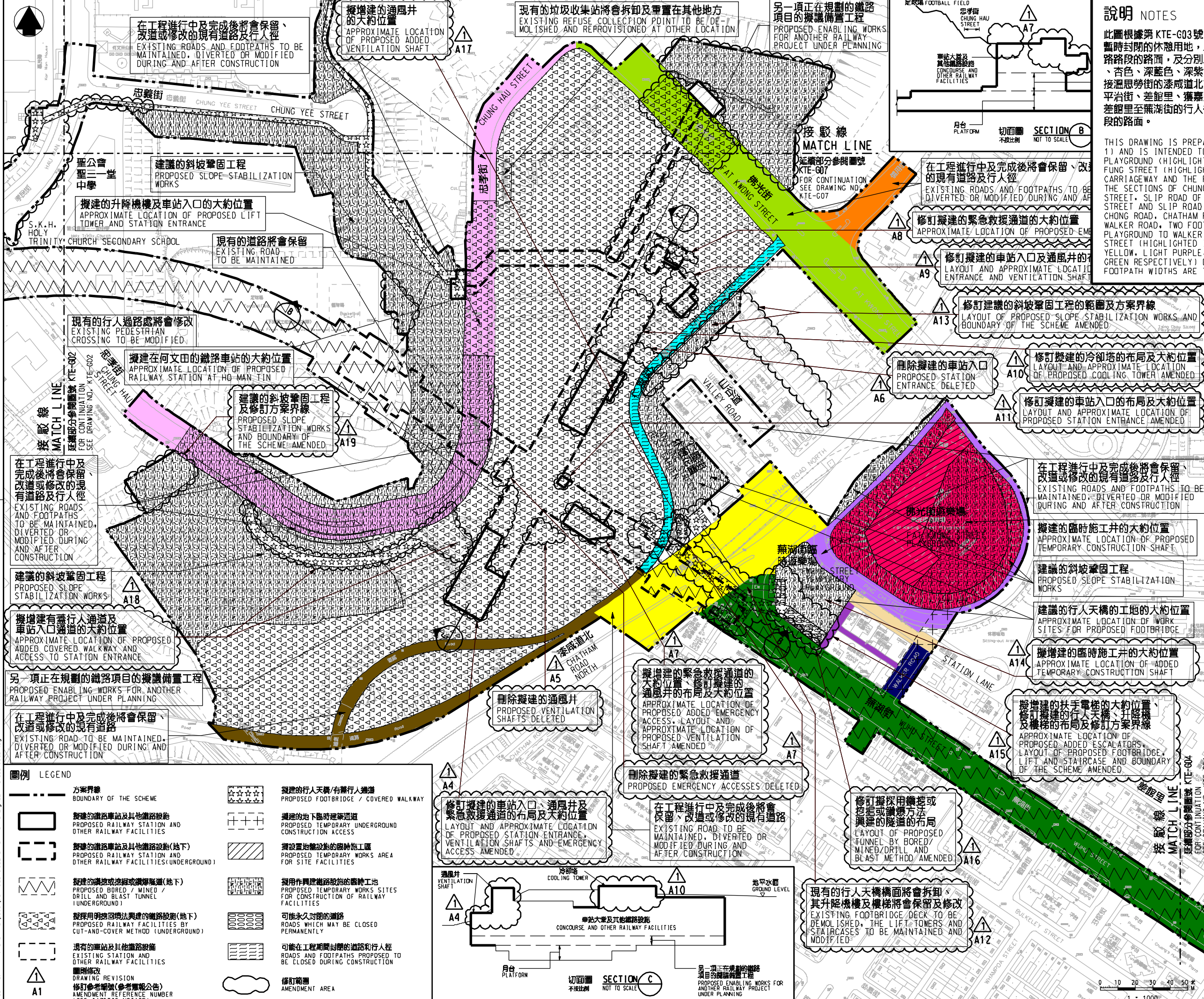
說明 NOTES

此圖根據第KTE-G03號(修改)圖則制訂,以紅色標明佛光街遊樂場將暫時封閉的休憩用地,以淺藍色標明仁風街將暫時封閉的行人路及行人路路面的路面...

THIS DRAWING IS PREPARED BASED ON DRAWING NO. KTE-G03 (REVISION 1) AND IS INTENDED TO SHOW THE OPEN SPACE OF FAT KWONG STREET PLAYGROUND (HIGHLIGHTED IN RED) TO BE TEMPORARILY CLOSED; YAN FUNG STREET (HIGHLIGHTED IN LIGHT BLUE) OF WHICH THE CARRIAGEWAY AND THE FOOTPATH ARE TO BE TEMPORARILY CLOSED...



SECTION B NOT TO SCALE



一般說明 GENERAL NOTES

有關一般說明參閱圖號 KTE - G01.

FOR GENERAL NOTES, REFER TO DRAWING NO. KTE - G01.

Table with columns for revision number, date, by, sub, app, and description, detailing amendments to the drawing.

SIGNED section with signature of YOUNG KONG SANG, dated 17/5/2011, and approval by the Chief Engineer of Highways Department.

圖例 LEGEND

- Legend items including: 方案界線 (Scheme Boundary), 擬建的鐵路車站及其他鐵路設施 (Proposed Railway Station and Facilities), 擬建的行人天橋/有蓋行人通道 (Proposed Footbridge/Covered Walkway), etc.

鐵路條例(第519章) 觀塘線延伸 暫時封閉佛光街遊樂場的休憩用地; 暫時封閉仁風街; 暫時封閉部分忠孝街, 佛光街, 信用街, 連接溫勞街...

Government of the Hong Kong Special Administrative Region logo and contact information for the Highways Department Railway Development Office.

Vertical text on the left margin: PLOT BY: ftkko 17/05/2011 16:55:03 FILENAME: x:\lonok\k-te\p000\pd\road closure\rev\ver 03\signed\kte-g03-0002-1.dgn