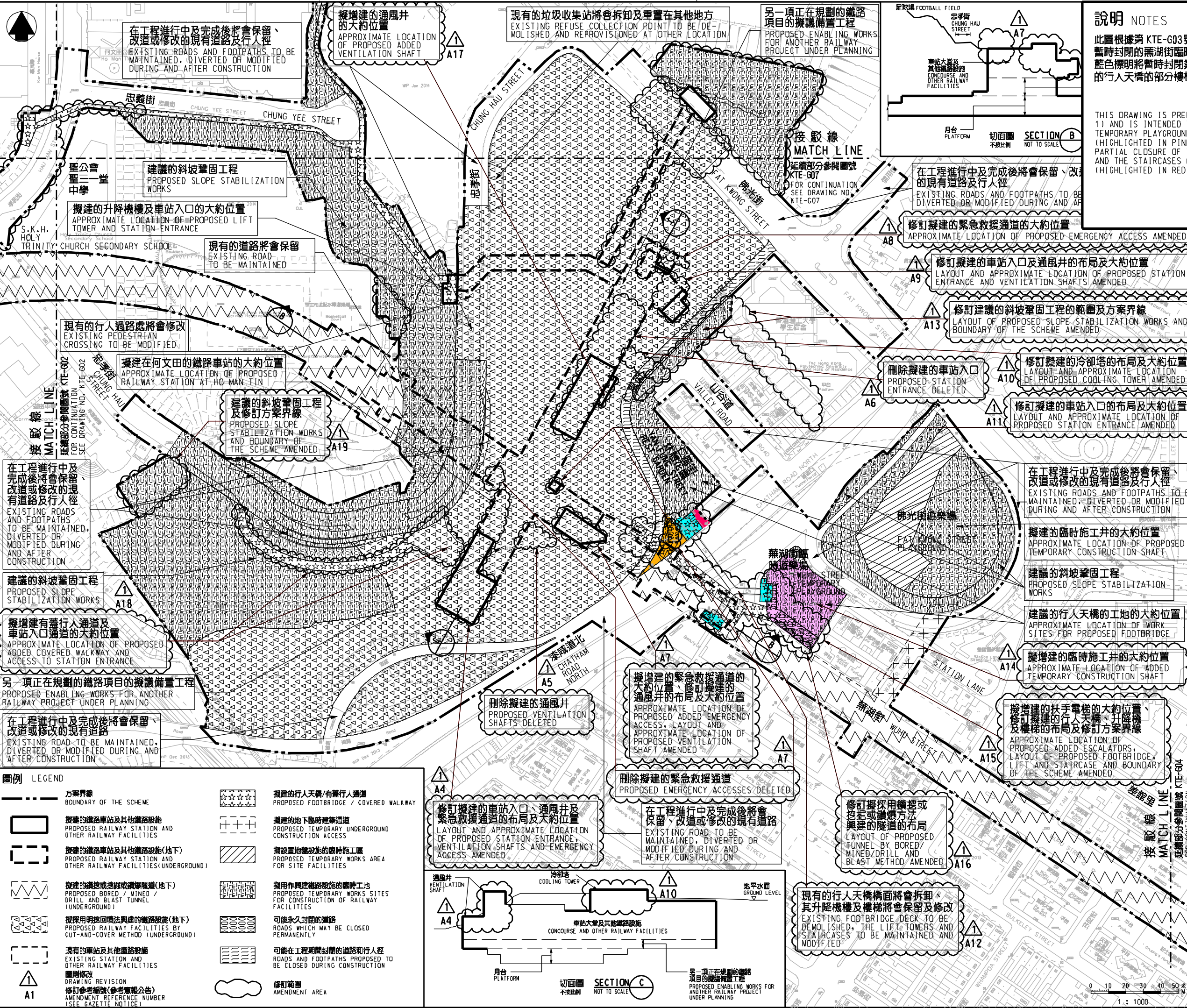


## 說明 NOTES

此圖根據第 KTE-G03 號 (修改) 圖則制訂, 分別以粉紅色和藍色標明將暫時封閉的蕪湖街臨時遊樂場及部分仁風街休憩花園, 及分別以紅色和藍色標明將暫時封閉鄰近仁風街休憩花園的部分行人路及橫跨漆咸道北的行人天橋的部分樓梯。

THIS DRAWING IS PREPARED BASED ON DRAWING NO. KTE-G03 (REVISION 1) AND IS INTENDED TO SHOW THE TEMPORARY CLOSURE OF WUHU STREET TEMPORARY PLAYGROUND AND PART OF YAN FUNG STREET REST GARDEN (HIGHLIGHTED IN PINK AND ORANGE RESPECTIVELY), AND THE TEMPORARY PARTIAL CLOSURE OF THE FOOTPATH NEAR YAN FUNG STREET REST GARDEN AND THE STAIRCASES OF THE FOOTBRIDGE ACROSS CHATHAM ROAD NORTH (HIGHLIGHTED IN RED AND BLUE RESPECTIVELY).



### 一般說明 GENERAL NOTES

有關一般說明請參閱圖號 KTE - G01。  
1. FOR GENERAL NOTES, REFER TO DRAWING NO. KTE - G01.

修訂表 TABLE OF AMENDMENTS					
修訂 REV	日期 DATE	修訂 BY	修訂 SUB	修訂 APP	說明 DESCRIPTION

SIGNED  
王偉光 STEPHEN WONG  
总工程师 / 特別職務  
Chief Engineer /  
SPECIAL DUTIES  
HIGHWAYS DEPARTMENT

28/4/2016

圖則名稱 DRAWING TITLE  
鐵路條例 (第519章)  
觀塘綫延伸  
RAILWAYS ORDINANCE (CHAPTER 519)  
KWUN TONG LINE EXTENSION

暫時封閉蕪湖街臨時遊樂場、部分仁風街休憩花園、鄰近仁風街休憩花園的行人路及橫跨漆咸道北的行人天橋的樓梯  
TEMPORARY CLOSURE OF WUHU STREET TEMPORARY PLAYGROUND PART OF YAN FUNG STREET REST GARDEN A FOOTPATH NEAR YAN FUNG STREET REST GARDEN AND THE STAIRCASES OF A FOOTBRIDGE ACROSS CHATHAM ROAD NORTH

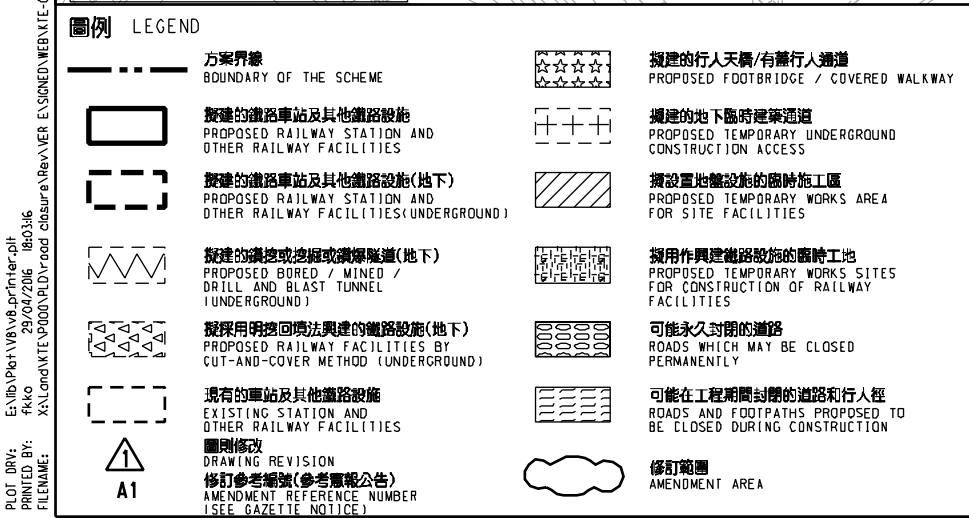
圖號 DRAWING NO.  
KTE/G03/0006/5

比例 SCALE  
1:1000 (A1)  
AS SHOWN

香港特別行政區政府  
THE GOVERNMENT OF THE HONG KONG  
SPECIAL ADMINISTRATIVE REGION

路政署  
HIGHWAYS DEPARTMENT

鐵路拓展處  
RAILWAY DEVELOPMENT OFFICE



PLOT DRW: X:\19\1918\1918.dwg, P:\1918\1918.dwg  
 PRINTED BY: ftkko  
 FILENAME: X:\19\1918\1918.dwg  
 E:\SIGNED\MKB\KTE-G03-0006-5.dwg  
 29/04/2016 16:03:36