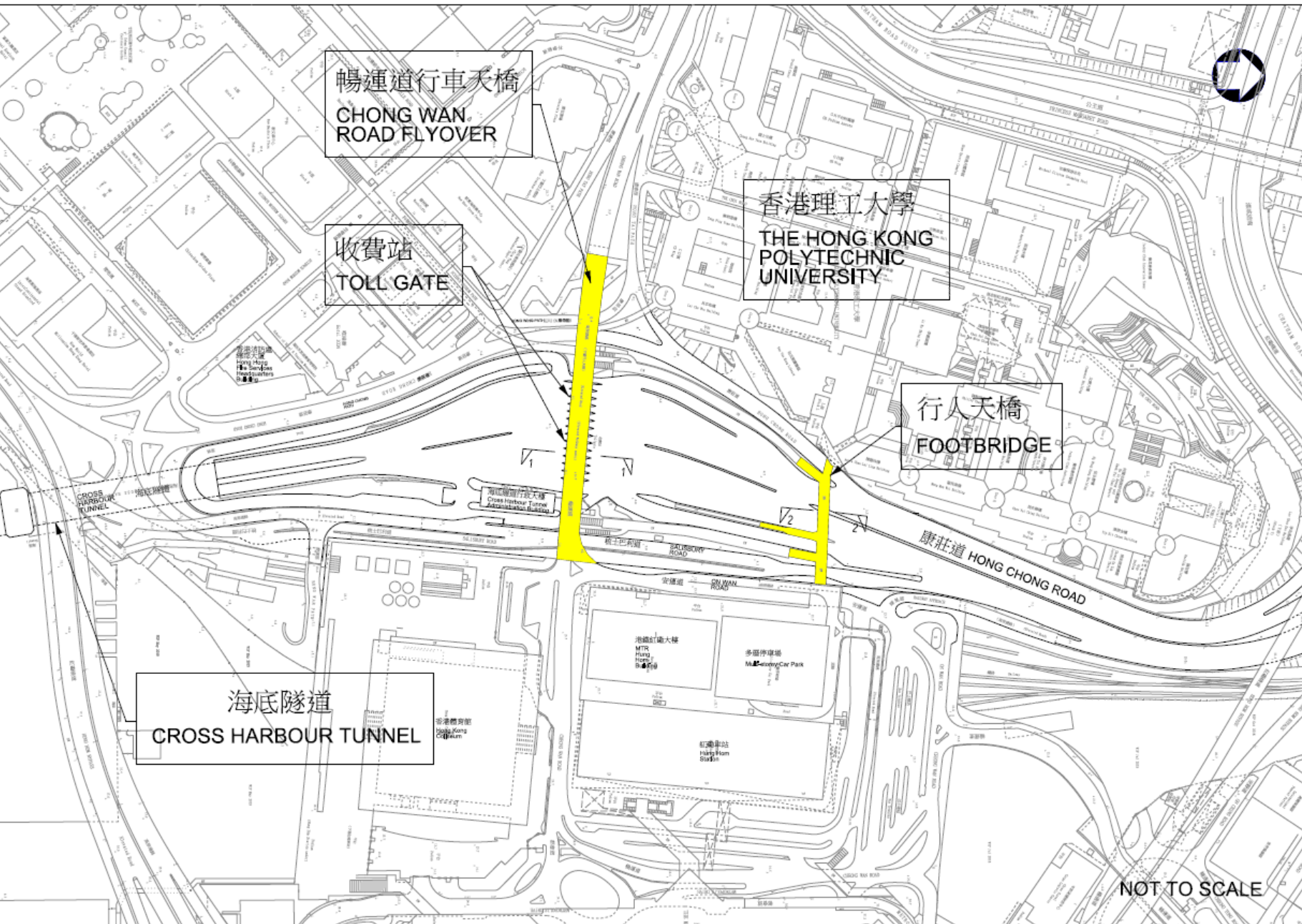


紅磡海底隧道  
道路設施損壞情況及復修工作

# 路面受損情況





暢運道行車天橋  
CHONG WAN  
ROAD FLYOVER

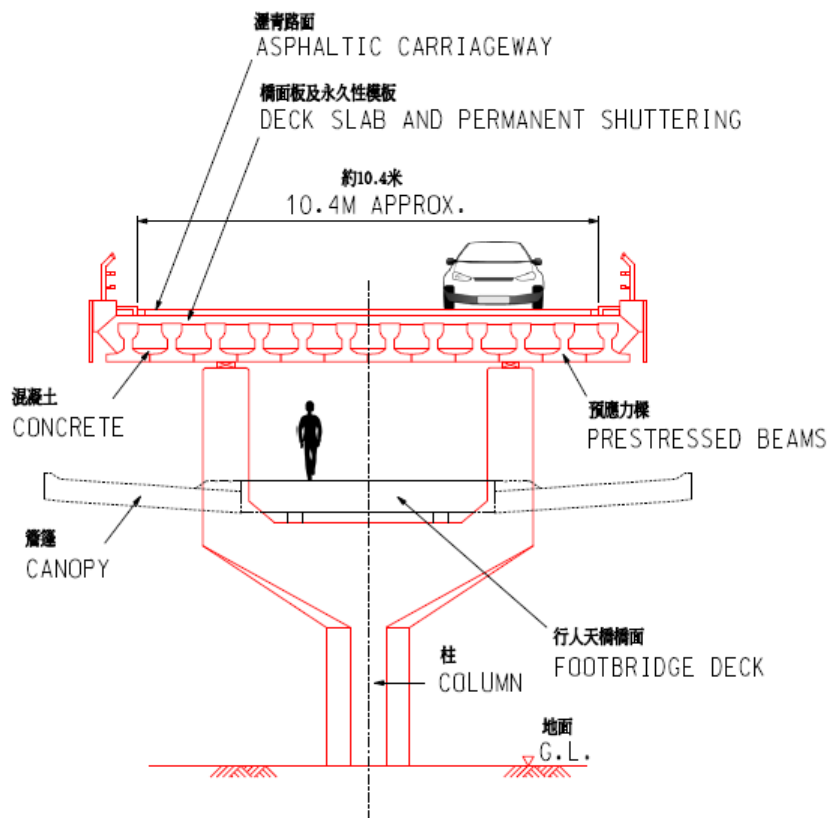
收費站  
TOLL GATE

香港理工大學  
THE HONG KONG  
POLYTECHNIC  
UNIVERSITY

行人天橋  
FOOTBRIDGE

海底隧道  
CROSS HARBOUR TUNNEL

NOT TO SCALE



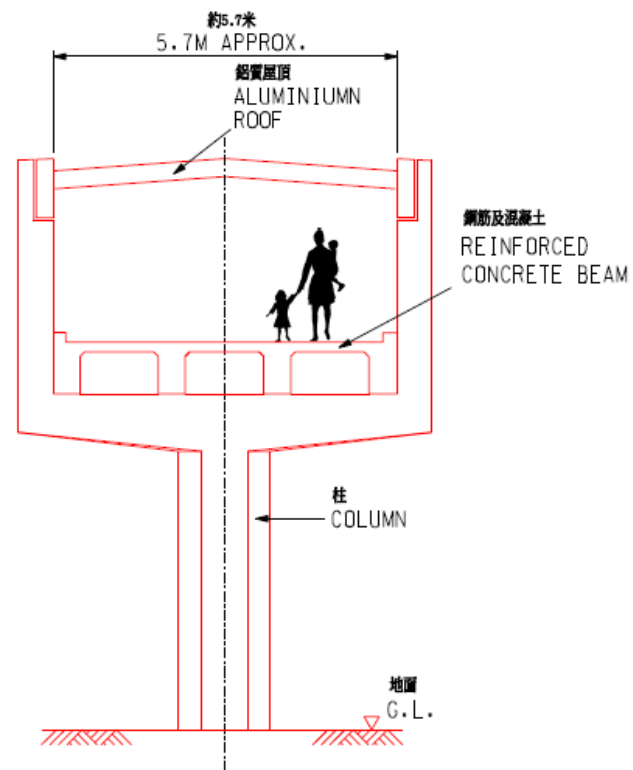
暢運道行車天橋

CHEONG WAN ROAD FLYOVER

截面圖1-1

SECTION 1-1

NOT TO SCALE



行人天橋

FOOTBRIDGE

截面圖2-2

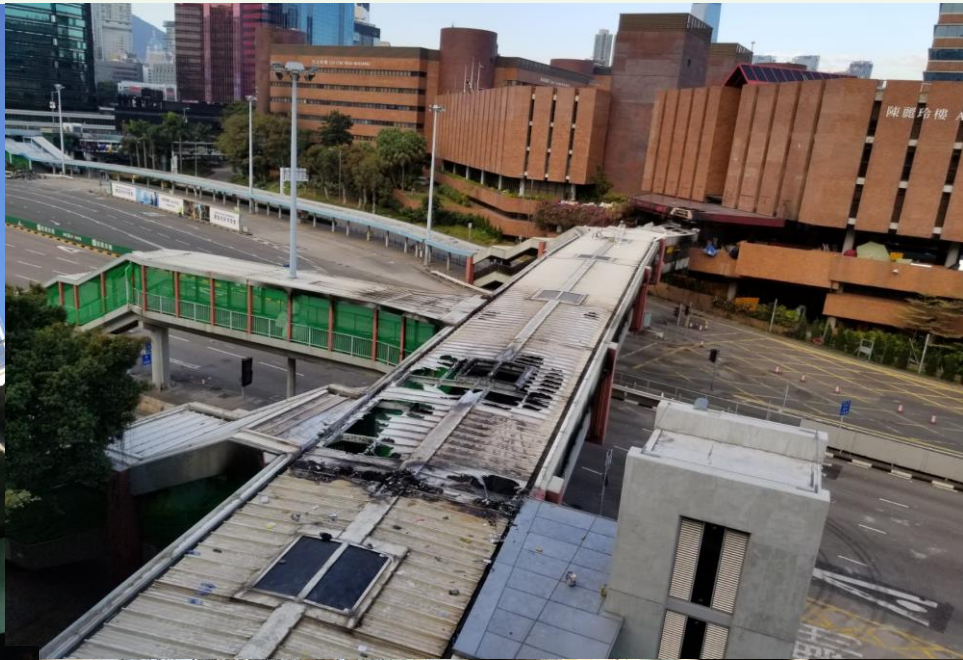
SECTION 2-2

NOT TO SCALE

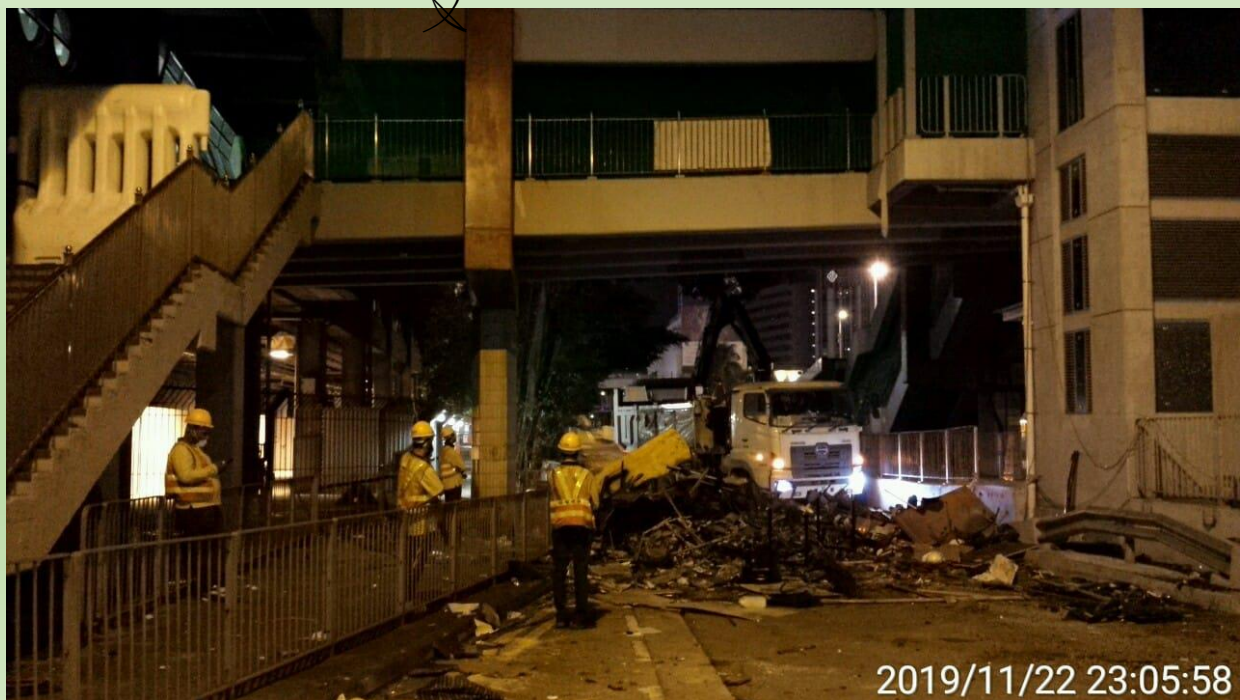
## 天橋嚴重受損



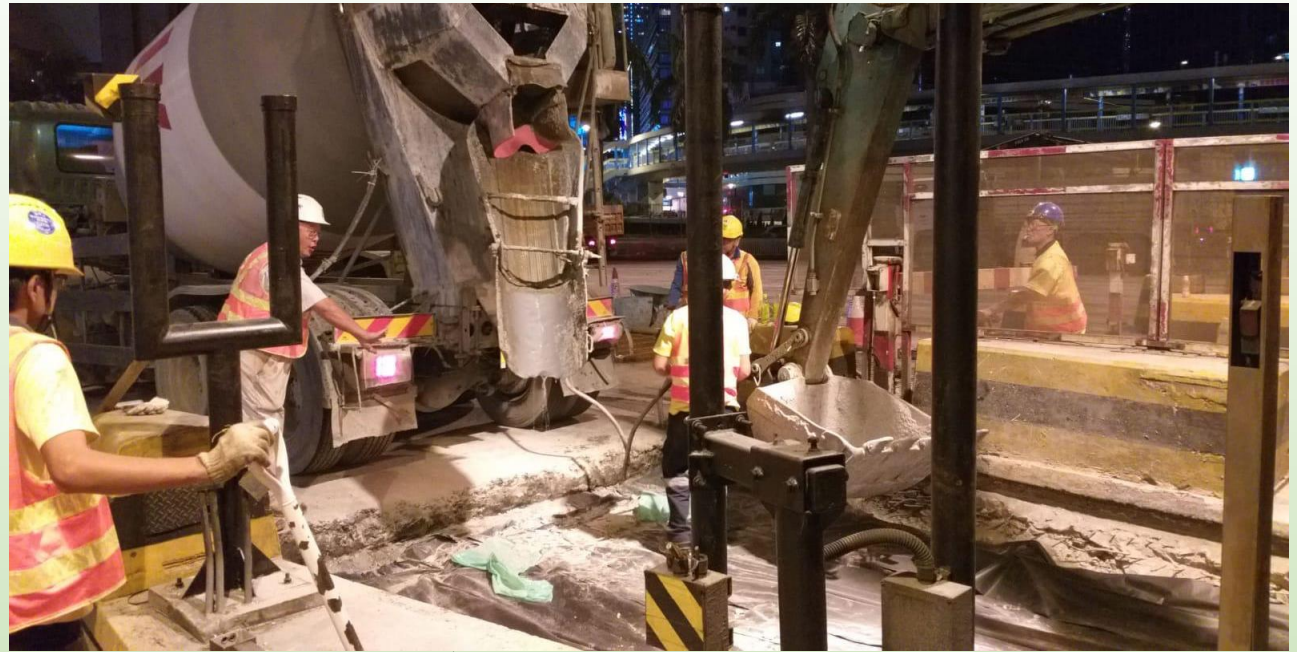
# 天橋嚴重受損



# 清理路障



# 復修路面

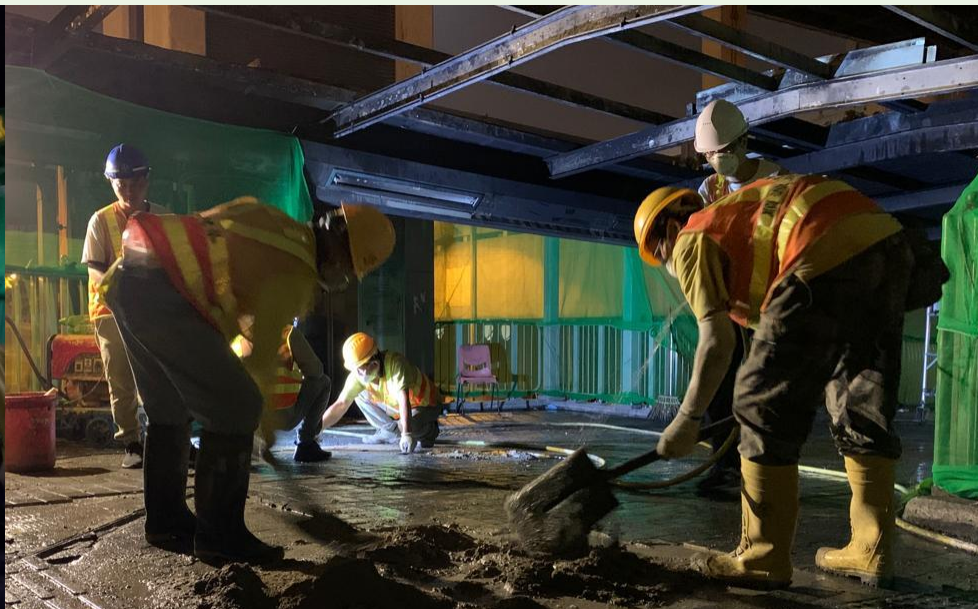
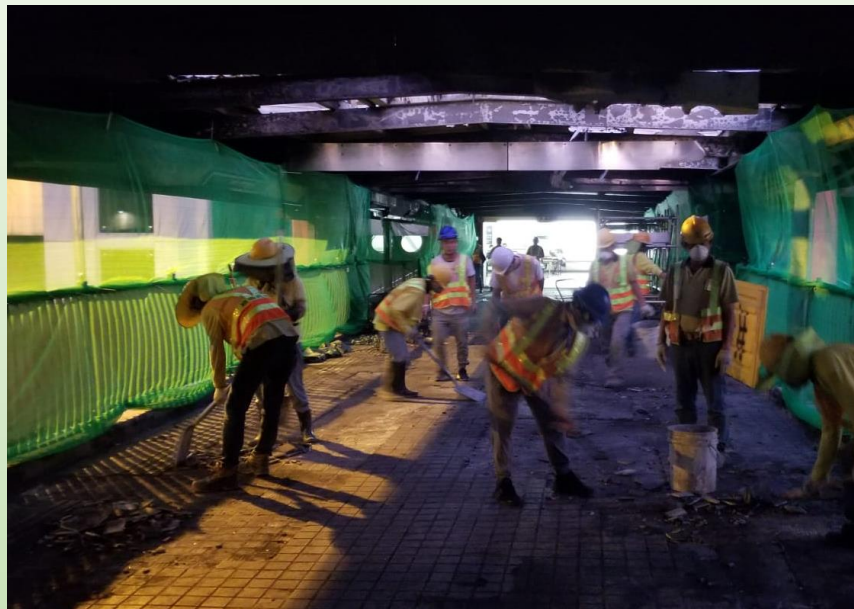




# 檢查行人天橋結構



# 復修行人天橋



# 巴士站範圍

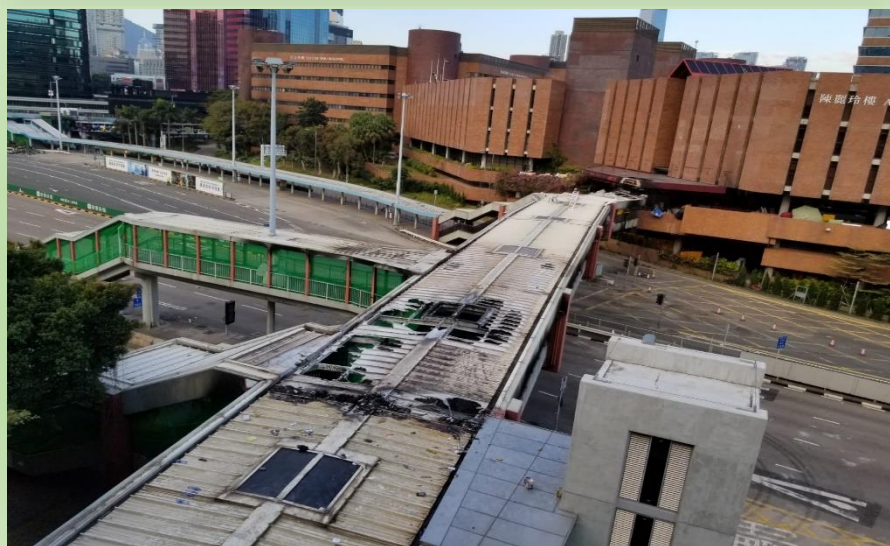


維修前



維修後

# 行人天橋



維修前

維修後