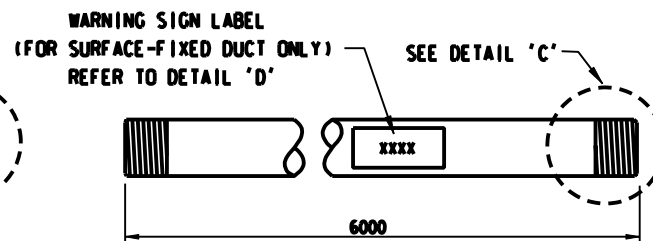
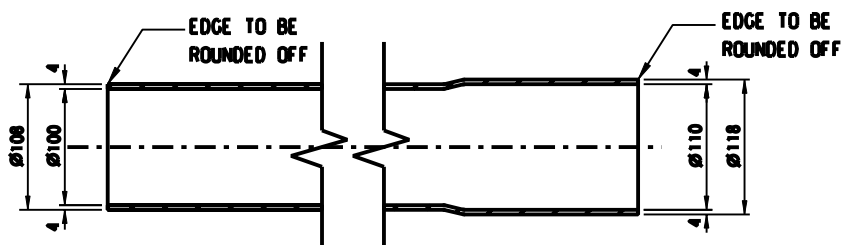


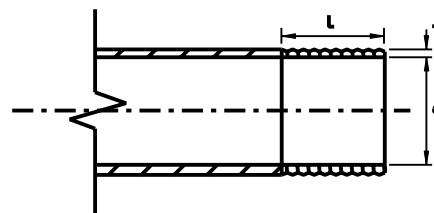
ELEVATION (UPVC)



ELEVATION (G.I.)



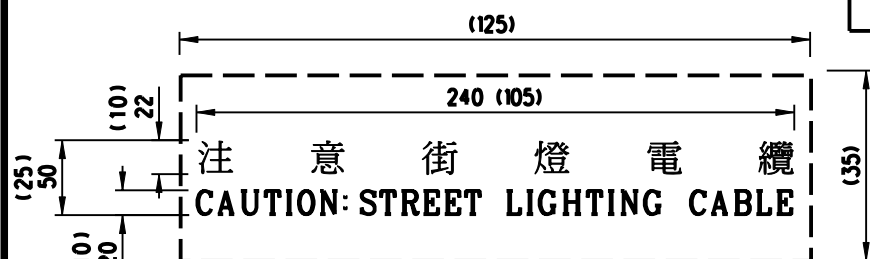
DETAIL 'A' (UPVC)
DETAIL 'B' (UPVC)



DETAIL 'C' (G.I.)

NOMINAL DIAMETER "D" (mm)	NOMINAL THICKNESS "t" (mm)	LENGTH OF SCREW "L" (mm)
40	3.25	26
50	3.25	26
100	4.5	33

DIMENSION FOR G.I. DUCTS



UPVC: (LETTER IN BLACK, IMPRINED) IN 1m REGULAR INTERVALS

SURFACE FIXED G.I.: (LETTER IN BLACK ON YELLOW COLOUR BACKING ON WATER-PROOF SIGN LABEL) IN 6m REGULAR INTERVALS

DETAIL 'D'

NOTES:

1. ALL DIMENSIONS ARE IN MILLIMETERS.
2. MATERIAL: UPVC DUCT TO BS3506 CLASS B 6.0 BAR.
G.I. DUCT TO BS1387:1985
3. COLOUR: PURPLE (COLOUR CODE NO.3050-R50B OF THE NATURAL COLOUR SYSTEM OF THE SWEDISH STANDARD.
4. THE PROPOSED UPVC DUCTS SHALL BE APPROVED BY THE ENGINEER.
5. THE EXACT DIMENSIONS SHALL BE IN ACCORDANCE WITH THE MANUFACTURER'S RECOMMENDATION.
6. STANDARD BENDS OF 30 .45 .90 etc. OF PVC DUCTS SHOULD BE FACTORY-FABRICATED.
7. SURFACE-FIXED G.I. DUCTS SHOULD BE STUCK WITH WARNING SIGNS LABEL (WATER-PROOF) IN 6m INTERVALS OR AS INSTRUCTED BY THE ENGINEER.
8. THE DOTTED LINE IS THE FRAME OF THE WARNING SIGNS LABEL AND THE NUMBER SHOWN IN BRACKET IS THE DIMENSION OF WARNING SIGNS LABEL FOR SURFACE-FIXED G.I. DUCTS.

C	Warning sign label for surface-fixed G.I. duct added General revision of notes Title amended		Feb 06
B	General revision		Jul 02
A	General revision of notes		Jun 02
	Former Drg. No. LDS2000-CL0005 with general revision		Dec 01
REF.	REVISION	SIGNATURE	DATE

UNPLASTICIZED PVC AND G.I. DUCTS

HIGHWAYS DEPARTMENT LIGHTING DIVISION

REFERENCE	DRAWING No.	CAD
SCALE N.T.S.	HLSDGE01-CL0005C	