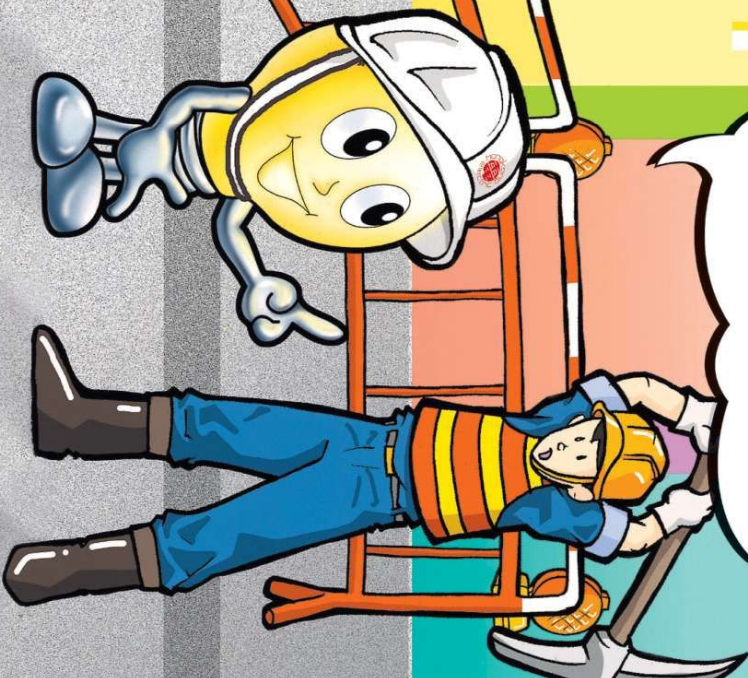


**Beware of  
Cable Damage,  
It Could Cause Injury!**



### 1. Plans from The Hongkong Electric Company, Limited ("HK Electric")

Call **2814 3443** if you do not have one. Should any of the signs  or  be found on the underground electricity cable plan provided in the vicinity of the work area, call **2814 3443** to contact HK Electric for site inspection before commencement of any work.



### 2. Locating Underground Cable Alignment

Make use of cable locating device to locate the alignment of underground electricity cables and mark the alignment on the road surface before commencement of work.

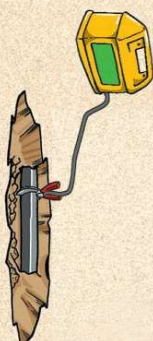
### 3. Trial Holes

Make use of hand tools to locate the exact position and depth of underground electricity cables.



### 4. Toroidal Active Detection

Determine and record the depth profile of the unexposed part of cable.



### 5. Proper Protection of Cables and Joints Can Avoid Damage

If cable is damaged, stop work, keep away, guard the site and call **2555 4999** (Chinese speaking) or **2555 4000** (English speaking) immediately.



Reinstate all protection slabs and warning tapes previously removed before backfilling. For enquiry, call **2814 3443**.

This leaflet is intended for guidance only. Contractors are reminded that in addition to following the procedures set out in this leaflet and the General Practice on Excavation of Excavation and Construction Work near Underground Electricity Cables issued by The Hongkong Electric Co., Ltd., they should take all necessary precautionary measures to protect underground services as stipulated in the latest version of Code of Practice on Working near Electricity Supply Lines in accordance with the provisions of the Electricity Supply Lines (Protection) Regulation under the Electricity Ordinance (Cap. 406) issued by Electrical and Mechanical Services Department, the latest version of Conditions of Excavation Permit or Conditions of Emergency Excavation Permit issued by Highways Department and other relevant legislative requirements. Moreover, the contractors must exercise due diligence and all reasonable care in carrying out their work in conformity with sound technical and engineering practice. The Hongkong Electric Co., Ltd. shall not be liable for any losses and/or damages suffered by any contractors arising out of or in consequence of their work taken or from reliance upon the whole or any part of the contents of this leaflet.