

## **Input Guideline - HyD Slope Vegetation Inventory (SVI) Records (2020 version)**

- Enter the link -  
[https://www.hyd.gov.hk/en/publications\\_and\\_publicity/publications/technical\\_document/handover\\_of\\_vegetation/doc/svi.zip](https://www.hyd.gov.hk/en/publications_and_publicity/publications/technical_document/handover_of_vegetation/doc/svi.zip)
  - Save the Access file in your PC.
  - Open the Access file, then follow the input instructions as below:-
1. Input HyD Ref. (e.g. 38770F90060) of the slope, then Press the “Input/update” button to enter record of vegetation.

The screenshot shows a software window titled "HyD Slope Vegetation Inventory". Inside, the title "VEGETATION RECORDS ON HIGHWAYS SLOPES" is centered. Below it, there is a label "Slope/Retaining Wall Reference: (e.g. 12345F12345)" and a text input field with a dropdown arrow. Below the input field is the text "(Max. 12 characters)". At the bottom, there are three buttons: "Input/Update", "Check input information", and "End".

2. Input the vegetation information as specified in the record form.

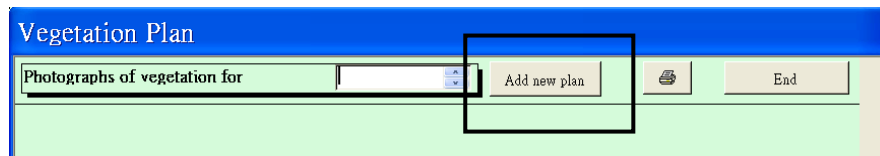
The screenshot shows a software window titled "Input/Update Vegetation Inventory". The form is divided into several sections:

- Update Record of Slope Vegetation**: Includes buttons for "Remove this record" and "End".
- Slope/Retaining Wall Reference No. (Primary Key)**: A text input field containing "38770F90060".
- Location**: A text input field containing "ADJACENT TO TSING YI NORTH COASTAL ROAD".
- Slope/Retaining Wall GEO No. (for information only)**: Three dropdown menus separated by a slash.
- Vegetation Inspection**: Includes fields for "Latest Vegetation Inspection by:" (Name), "(Post/Firm)", and "on" (Date). It also has a field for "Proposed next Vegetation Inspection before".
- General Information**: Includes fields for "Date of Planting Practical Completion", "Last Maintenance Operation", "As-constructed Drawing No.", and "Horticultural maintenance Manual (tick if yes):" with a checkbox.
- Other Information**: A large text area.
- Other Observations (in addition to/details of comment on the below)**: A large text area.
- Vegetation Type**: A table with columns for "Vegetation Type", "Cover", and "Remarks(e.g. Dominant species, average tree height & girth)".

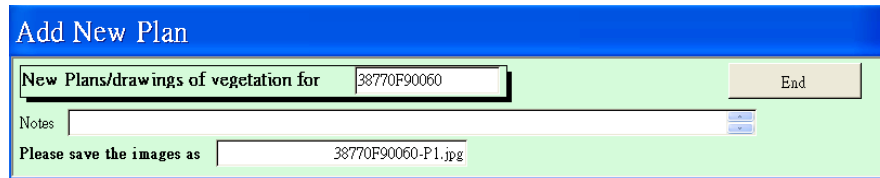
Vegetation Type	Cover	Remarks(e.g. Dominant species, average tree height & girth)
Grass or hydroseeding only	<input type="text"/> %	
Grass/vegetation system over rigid surface	<input type="text"/> %	
Low vegetation (<1M height)	<input type="text"/> %	

3. Then Press “Add/update plan details” or “Add/update photo details” button at the top of the form for image references entry.

4. Press “Add new plan (or photo)” button.



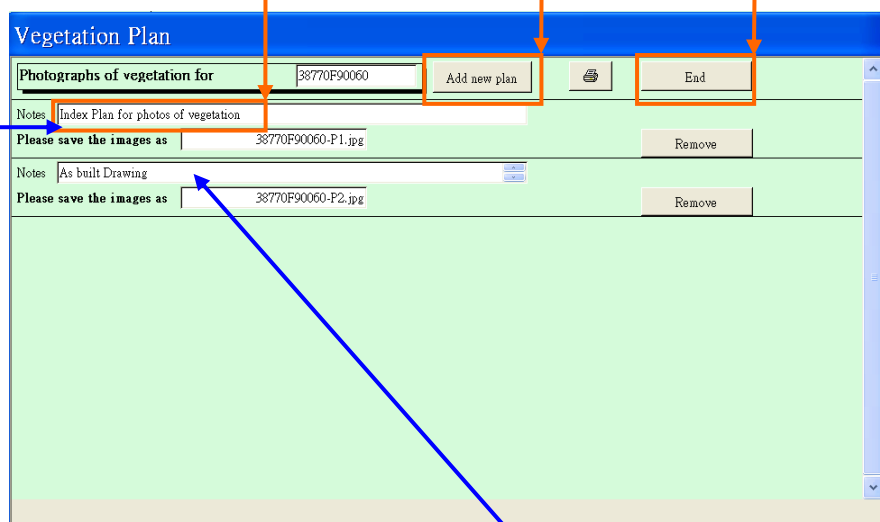
5. After entering the description of the first image, an image path reference will be automatically generated in the box below.



Step 5a: Click this button to add more plans

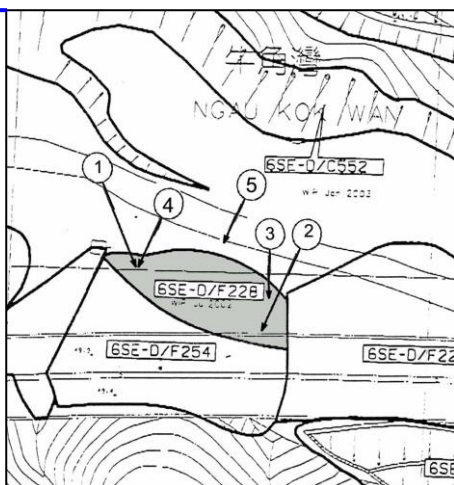
Step 5b: Enter the notes (DWG title or description)

Step 6: Click END button to confirm completing reference entry for one image

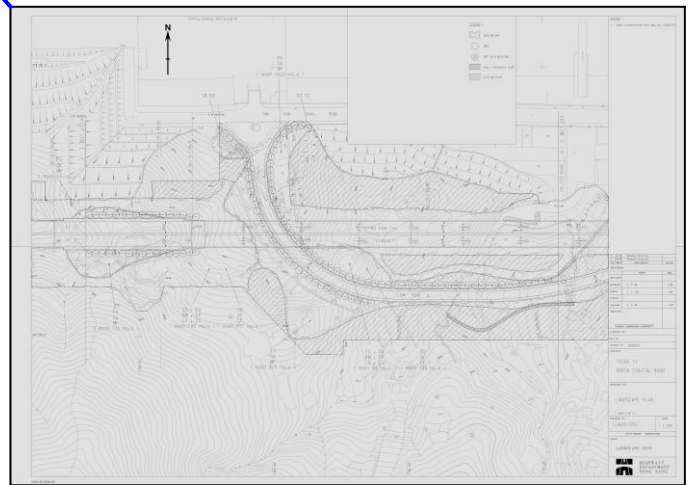


Note:

1. Filename with P1 should be preserved for “Index Plan for photo of vegetation”.
2. Filename with P2 should be preserved for “As-built drawing”.



Index Plan for Photo of vegetation  
38770F90060-P1.jpg  
(P1 for index plan)



As built drawing, if any  
38770F90060-P2.jpg,  
(P2 for as-built drawing)

6. Press “End” button for completing reference entry of one image.
7. Repeat the steps of (4) to (6) for input of next image until all image references of the slope are entered.

Vegetation Photo			
Photographs of vegetation for		38770F90060	<input type="button" value="Add new photo"/> <input type="button" value="End"/>
Date-photo:	11/05/2004	Notes	General View of the feature
Please save the images as		38770F90060-F1.jpg	<input type="button" value="Remove"/>
Date-photo:	11/05/2004	Notes	General view of the feature
Please save the images as		38770F90060-F2.jpg	<input type="button" value="Remove"/>
Date-photo:	11/05/2004	Notes	Typical vegetation species on the feature
Please save the images as		38770F90060-F3.jpg	<input type="button" value="Remove"/>
Date-photo:	11/05/2004	Notes	Typical vegetation species on the feature
Please save the images as		38770F90060-F4.jpg	<input type="button" value="Remove"/>
Date-photo:	11/05/2004	Notes	General view of the feature
Please save the images as		38770F90060-F5.jpg	<input type="button" value="Remove"/>

#### 7a. Examples of input photo



General view of the feature  
38770F90060-F1.jpg



General view of the feature  
38770F90060-F2.jpg



Typical vegetation species on the feature  
38770F90060-F3.jpg



Typical vegetation species on the feature  
38770F90060-F4.jpg



General view of the feature  
38770F90060-F5.jpg

8. Press “End” button of these image forms for completion of image input.

## 9. Detail Input Guideline

Table abstracted from Appendix A, Geoguide 5, Third Edition, December 2003

**MAINTENANCE MANUAL (SHEET 1 OF 8)**

**PART I - BASIC SLOPE/RETAINING WALL INFORMATION**

**SLOPE/RETAINING WALL REFERENCE NO. <sup>(1)</sup>**

Location of Slope/Retaining Wall (address)

Map Co-ordinates (1980 DATUM)      Easting      Northing      Toe Elevation (mPD)

Same as that In Slope Maintenance Manual

Refer to step 3 to 8

**Input/Update Vegetation Inventory**

**Update Record of Slope Vegetation**      Remove this record      End

Slope/Retaining Wall Reference No.: 38770F90060 (Primary Key)      Add/update plan details      Add/update photo details

Location: ADJACENT TO TSING YI NORTH COASTAL ROAD

Slope/Retaining Wall GEO No.: (for information only)

**Vegetation Inspection**

Latest Vegetation Inspection by: (Name) (Post/Firm) on (Date)

Proposed next Vegetation Inspection before (Date)

**General Information**

Date of Planting Practical Completion

Last Maintenance Operation (A) - see below

As-constructed Drawing No.      Horticultural maintenance Manual (tick if yes): ☐

Other Information (B) - see below

Other Observations (in addition to details of comment on the below) (C) - see below

Percentage of slope area (sum should be 100%)

Hard surface with percentage of slope area (shotcrete / rock surface, bare soil surface and etc.)

Consultants / Maintenance contractor

Final handing over date / Last Horticultural Inspection (RHI) date by maintenance contractor

Tick if available

Photographic examples of vegetation type, See Appendix A

Vegetation Type	Cover	Remarks (e.g. Dominant species, average tree height & girth)
Grass or hydroseeding only	%	
Grass/vegetation system over rigid surface	%	
Low vegetation (<1M height)	%	e.g. Wedelia spp.
Shrubs (<2m with woody stems)	%	e.g. Ligustrum sinensis
Trees/woodland in soft surface	%	e.g. Acacia confusa – av. ht 6m, av trunk dia 600mm
Trees/shrubs in rigid surface (tree rings)	%	e.g. Acacia confusa – av. ht 6m, av trunk dia 600mm
Wall Trees / OVT	%	e.g. Ficus microcarpa – av. ht 4m, av trunk dia 100mm & (D) – see below
Creepers over rigid surface	%	e.g. Parthenocissus himalayana
Toe wall/berm planters with vegetation	%	e.g. Bauhinia variegata, Ligustrum sinensis etc..
Others:	%	

記錄: 1 之 1 (篩選)

- (A) For example, clearing debris, grass cutting, weed / remove invasive vine or tree species, restake, watering, pruning, remove dead trees / branches and etc.
- (B) Type of greening system, irrigation system, any vegetation require special attention, rare and endanger species, unauthorized planting, illegal occupancy and any other information useful for vegetation maintenance.
- (C) Vegetation type other than those below and other observations like: Within Country Park, Invasion of invasive vine e.g. Mikania from adjacent land, history of termite or imported red fire ant, trespassing, pest infection and any other useful observation for future vegetation maintenance.
- (D) Detail description of Old and Valuable Tree (OVT)

10. Then Press “End” button of Slope Vegetation Form for completing input of one slope.
11. Repeat the steps of (1) to (10) for next Slope entry.
12. Close the Access file when data entry for all slopes is finished.
13. For recording the access file and image files (~200KB per image) in a CD-R, a single image folder should be created and image files for all slopes are copied into this folder. The names of the image files **MUST** be identical to the image path reference created in the step (5) above.

名稱	大小	類型	修改日期
Image Folder(1)		檔案資料夾	13/4/2007 11:47
SVI-input	336 KB	Microsoft Office Ac...	22/3/2007 16:01

名稱	大小	類型	修改日期
38770F90060-F1	107 KB	JPEG 影像	13/6/2006 10:53
38770F90060-F2	107 KB	JPEG 影像	13/6/2006 10:53
38770F90060-F3	107 KB	JPEG 影像	13/6/2006 10:53
38770F90060-F4	107 KB	JPEG 影像	13/6/2006 10:53
38770F90060-F5	107 KB	JPEG 影像	13/6/2006 10:53
38770F90060-P1	107 KB	JPEG 影像	13/6/2006 10:53
38770F90060-P2	107 KB	JPEG 影像	13/6/2006 10:53

14. Further to step (13), one single Access file should contain Slope Vegetation records for all slopes and the same for one image folder in one CD-R for a smooth operation of updating the records in the Slope Inventory.

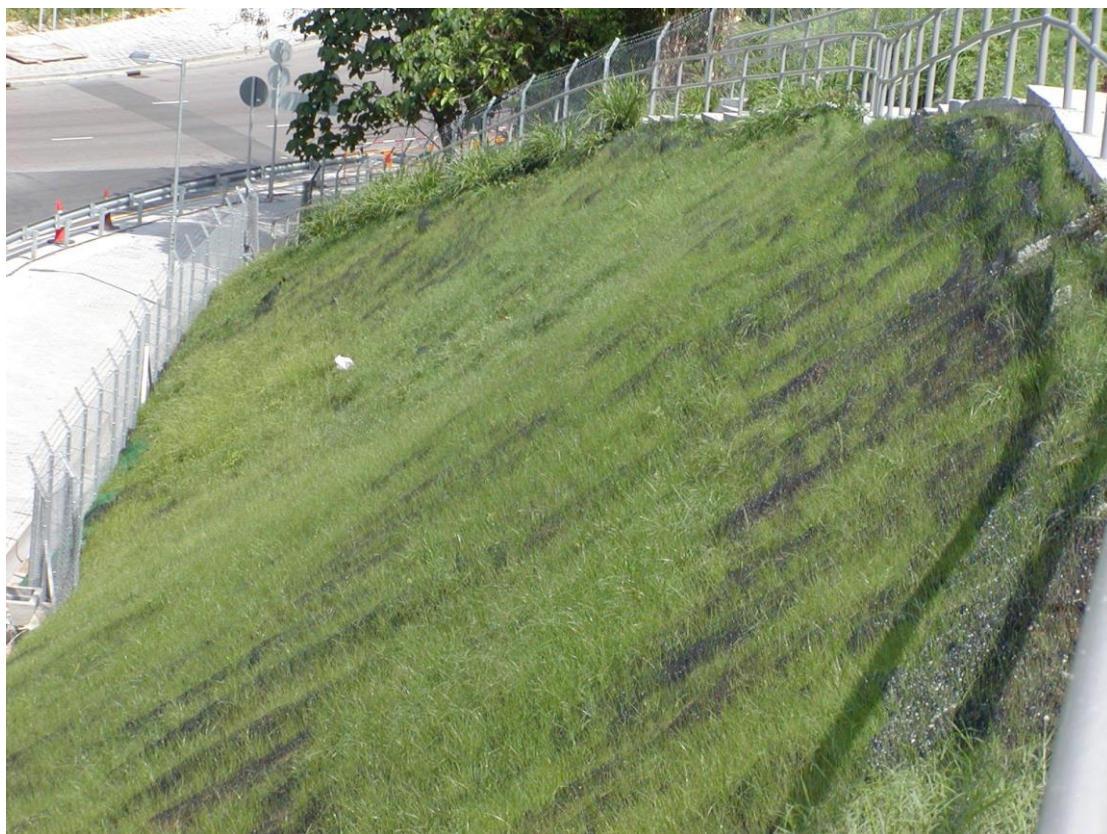
## **Appendix A**

### **Photographic examples of vegetation types**

1. Grass or hydroseeding only (Photo 1)
2. Grass/vegetation system over rigid surface (Photo 2,3)
3. Low vegetation(<1m height) of grasses, creepers herbaceous, ferns, etc (Photo 4,5)
4. Shrubs (<2m with woody stems) (Photo 6,7)
5. Trees/woodland in soft surface (Photo 8,9)
6. Trees/shrubs in rigid surface (i.e. tree rings) (Photo 10,11)
7. Wall Trees (Photo 12,13)
8. Creepers over rigid surface (Photo 14,15)
9. Toe wall/berm planters with vegetation (16,17)
10. Others (i.e. Old and valuable trees) (Photo 18, 19)



## 1. Grass or hydroseeding only



(Photo 1)

## 2. Grass/vegetation system over rigid surface



(Photo 2)



(Photo 3)



**3. Low vegetation(<1m height) of grasses, creepers herbaceous, ferns, etc**



(Photo 4)



(Photo 5)



#### 4. Shrubs (<2m with woody stems)



(Photo 6)



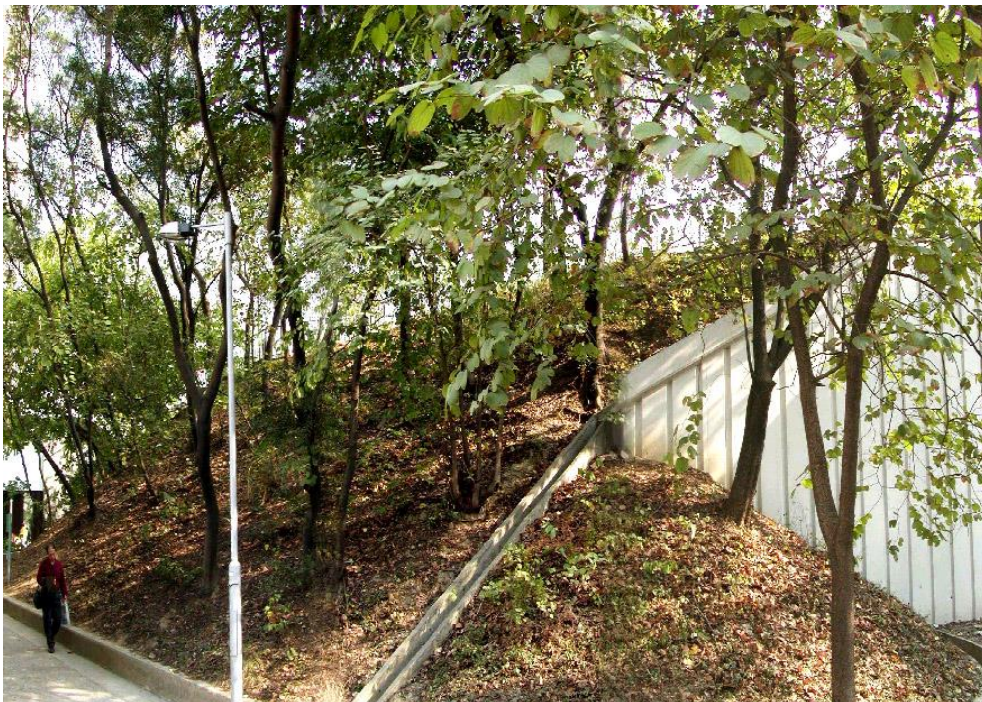
(Photo 7)



## 5. Trees/woodland on soft surface



(Photo 8)



(Photo 9)



**6. Tress/shrubs on rigid surface (i.e. tree rings)**



(Photo 10)



(Photo 11)



## 7a. Wall Trees



(Photo 12)



## 7b. Wall Trees



(Photo 13)



## 8. Creepers over rigid surface



(Photo 14)



(Photo 15)



## 9. Toe wall/berm planters with vegetation



(Photo 16)



(Photo 17)



**10. Others (i.e. Old valuable trees)**



(Photo 18)



(Photo 19)