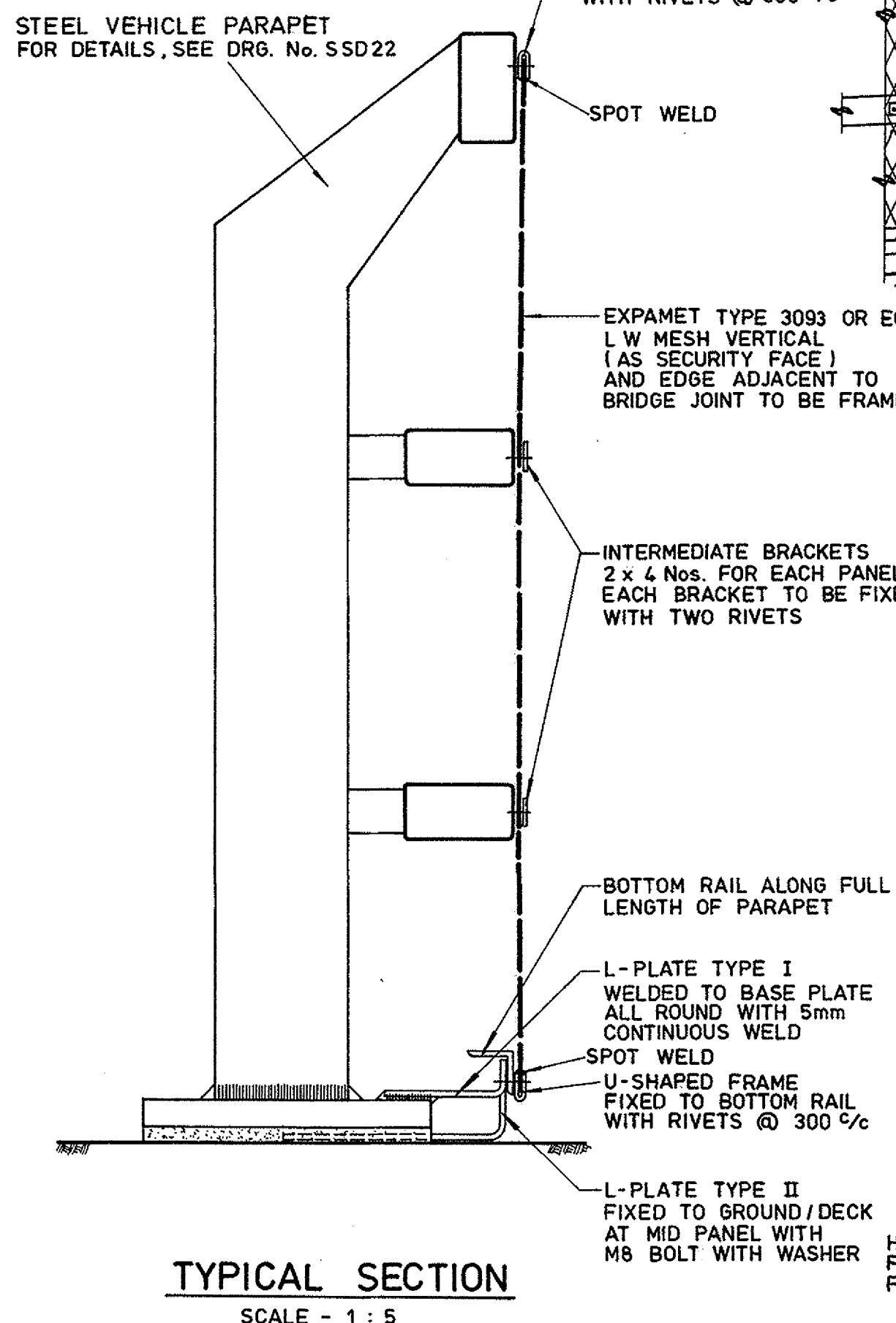
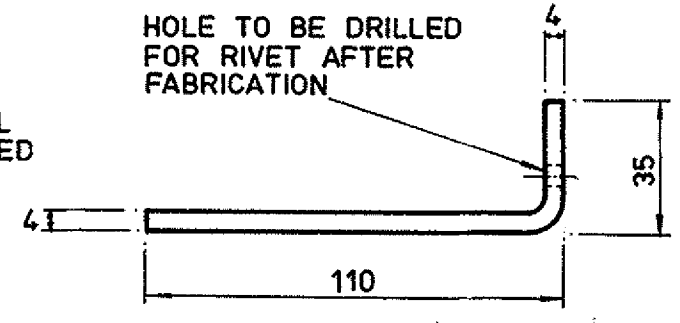


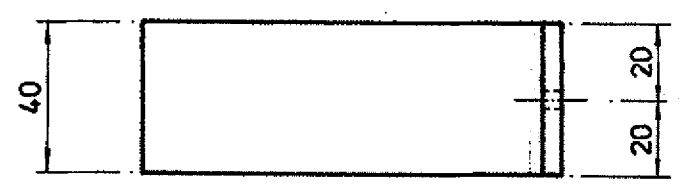
**FRONT ELEVATION**  
SCALE - 1 : 10



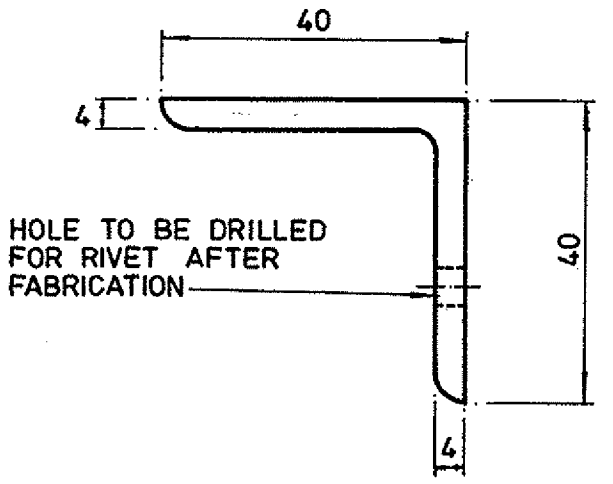
**TYPICAL SECTION**  
SCALE - 1 : 5



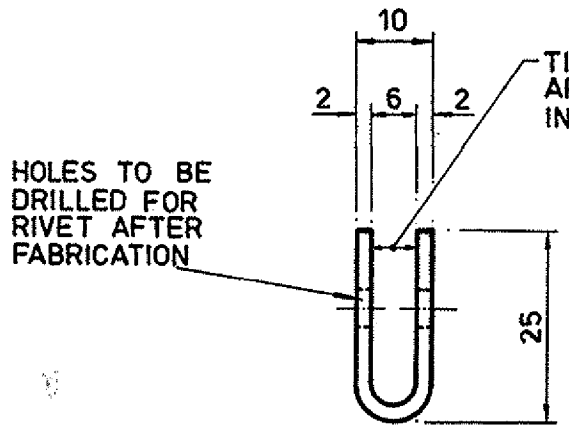
**L-PLATE TYPE I**  
SCALE - 1 : 2



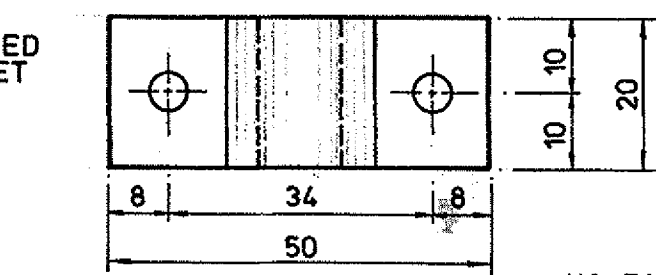
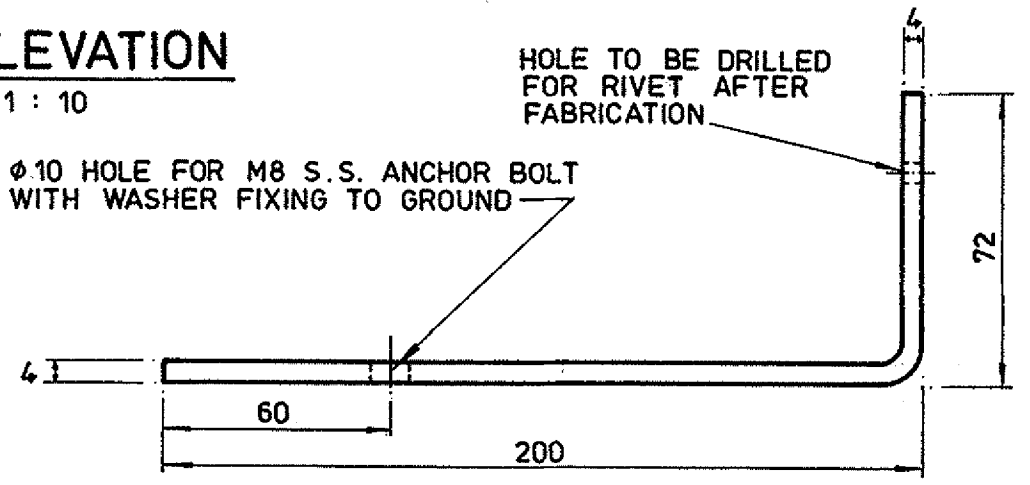
**L-PLATE TYPE II**  
SCALE - 1 : 2



**BOTTOM RAIL**  
FULL SIZE



**U-SHAPED FRAME**  
FULL SIZE



**INTERMEDIATE BRACKET**  
FULL SIZE

- NOTES:**
1. ALL DIMENSIONS ARE IN MILLIMETRES.
  2. FOR SLOPING RAILS, MESH SHOULD BE CUT TO SUIT & ADJACENT PANELS ARE ALSO TO BE CUT TO GIVE CONTINUITY IN MESH PATTERN AT JOINTS
  3. ALL FABRICATED STEELWORK IS TO BE HOT DIP GALVANISED TO BS729

no.	date	description	initial
A	5.92	EXPAMET TYPE 3092 AMENDED TO TYPE 3093	Ho
	2.92	SUPERSEDES SWO 27B	Ho

**REVISION**

	name	date
drawn	S. K. CHU.	MAY.87
checked	W. J. QM	MAY 87
approved		

contract no.	
file no.	
project no.	
contract	

drawing title  
**MESH INFILL TO STEEL VEHICLE PARAPET (TYPE A)**

drawing no.	scale
S SD 99 <sup>A</sup>	AS SHOWN

office  
**STRUCTURES DIVISION**

