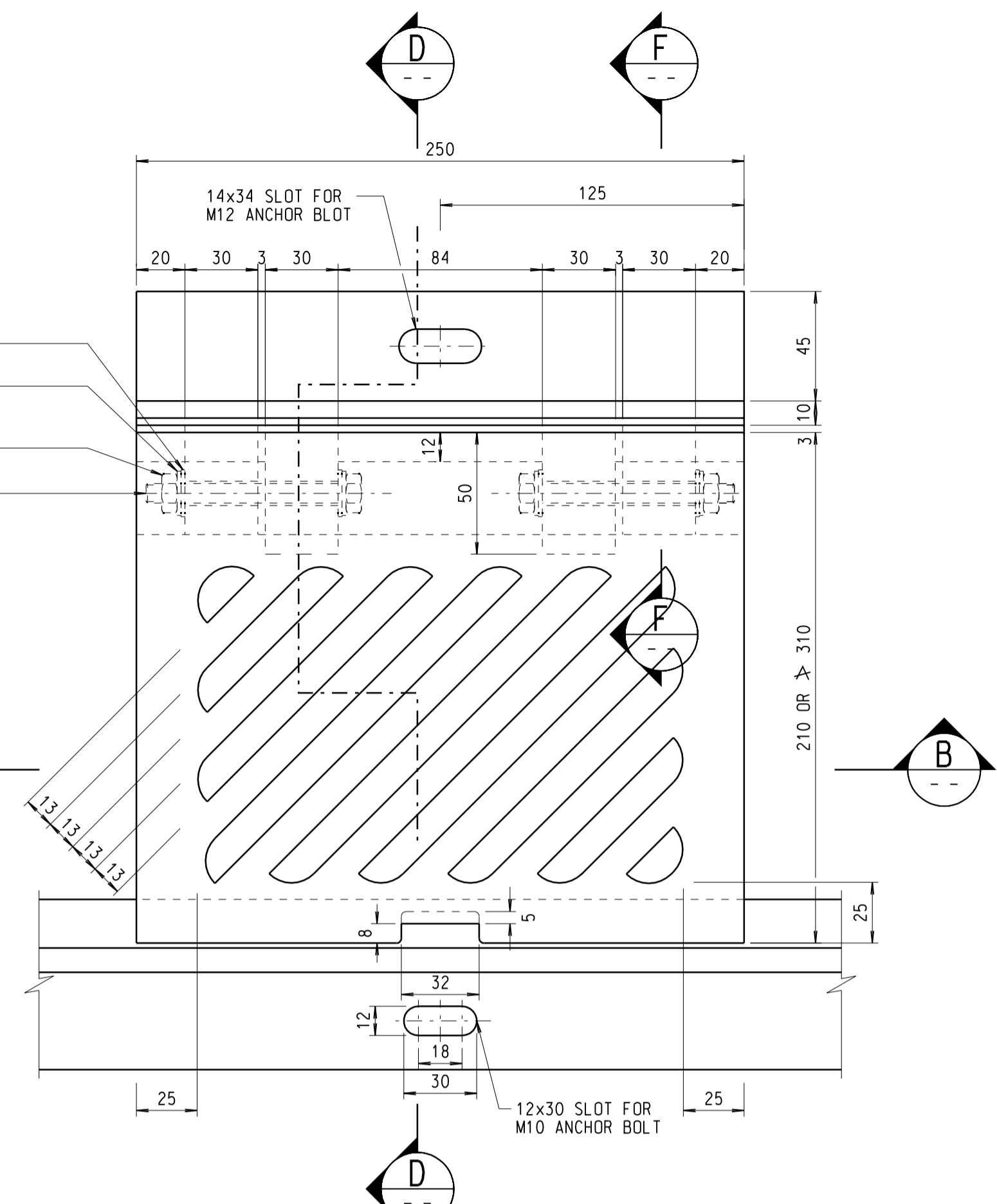
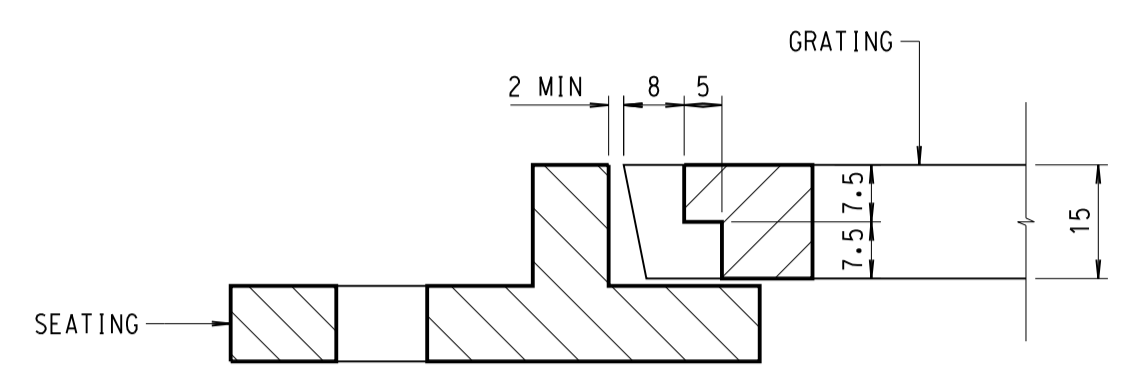


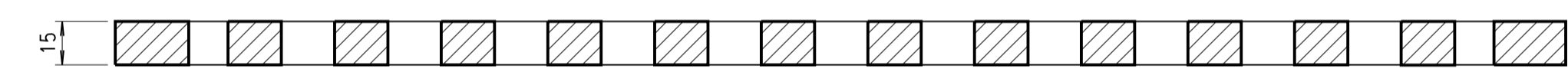
PLAN OF GRATING
SCALE 1:2
(EXACT No. OF SLOTS AND RIBS TO BE ADJUSTED TO SUIT CHANNEL WIDTH)



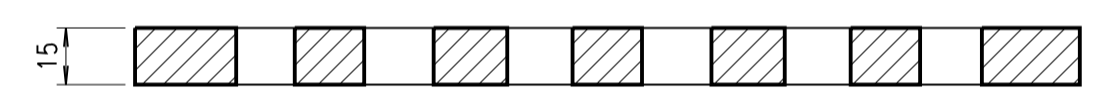
PLAN OF GRATING - HALF COVER
SCALE 1:2
(EXACT No. OF SLOTS AND RIBS TO BE ADJUSTED TO SUIT CHANNEL WIDTH)



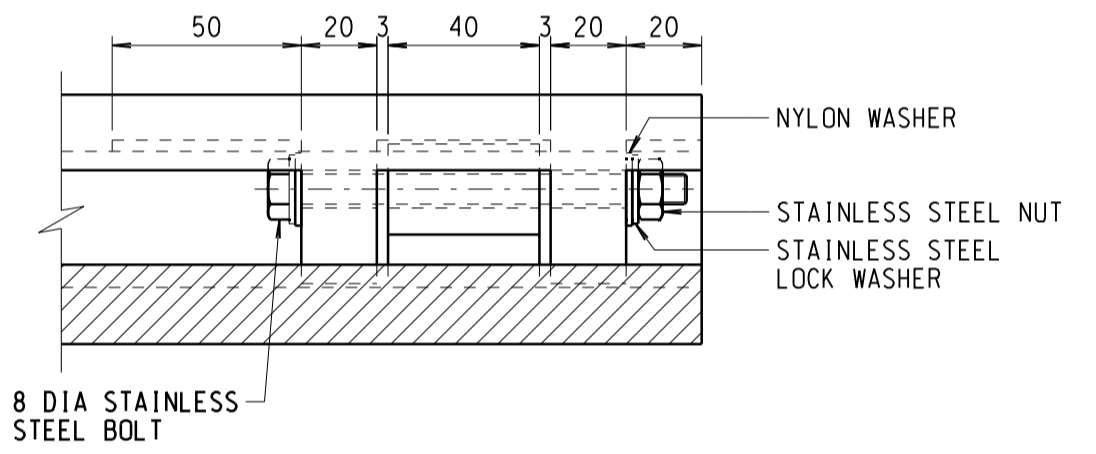
DETAIL OF PRISING SLOT
SCALE 1:1



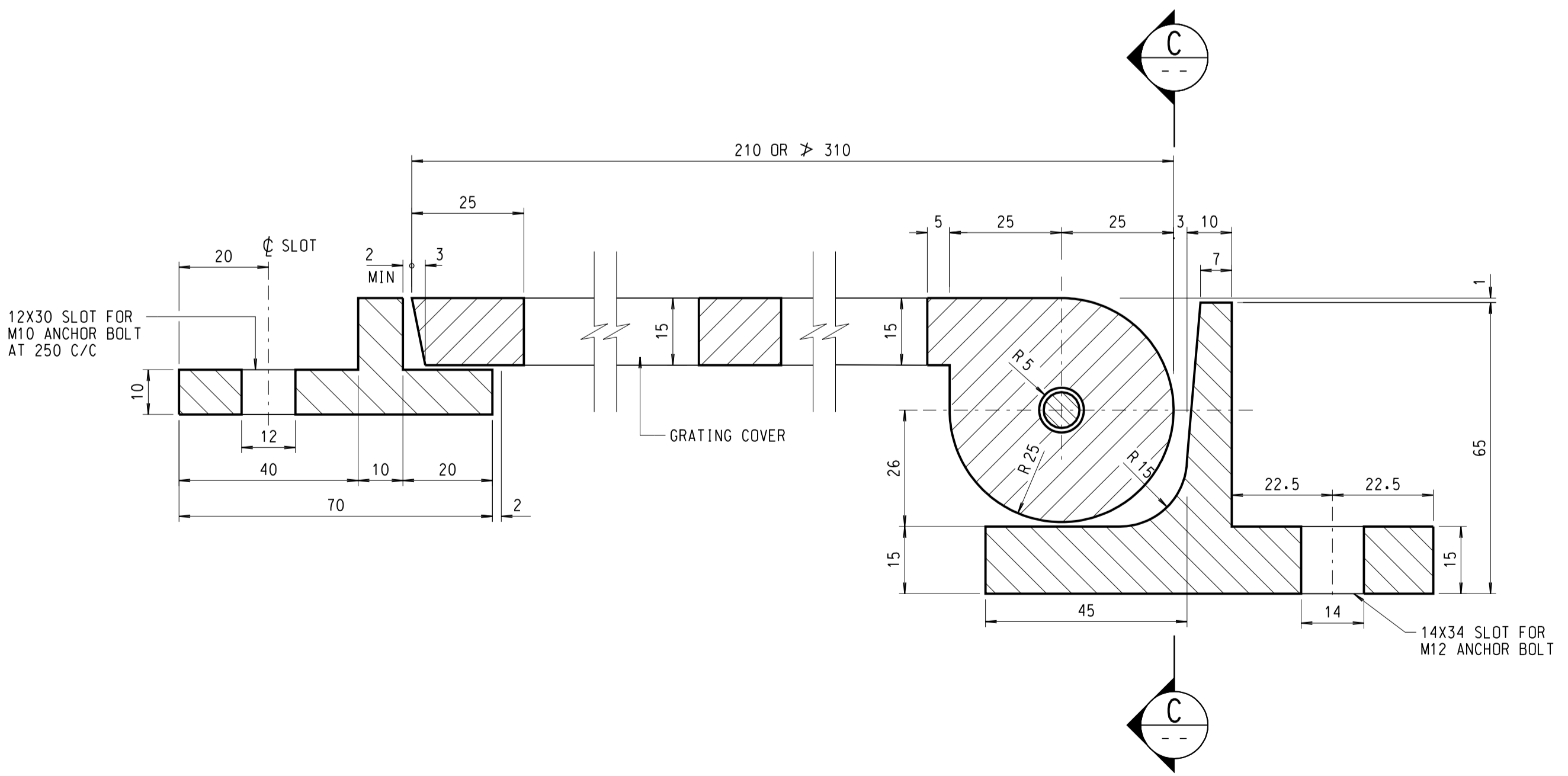
SECTION A-A
SCALE 1:2



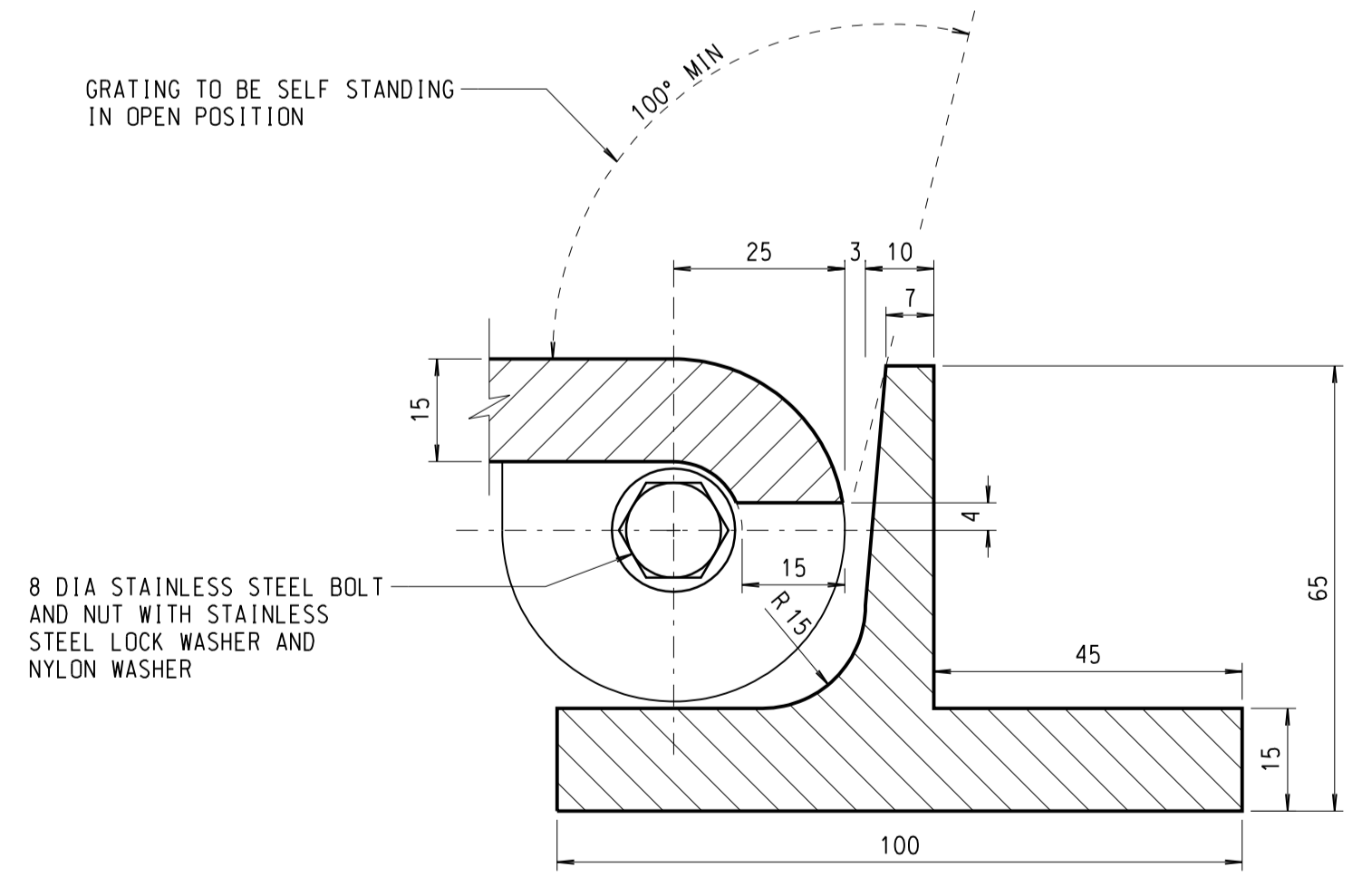
SECTION B-B
SCALE 1:2



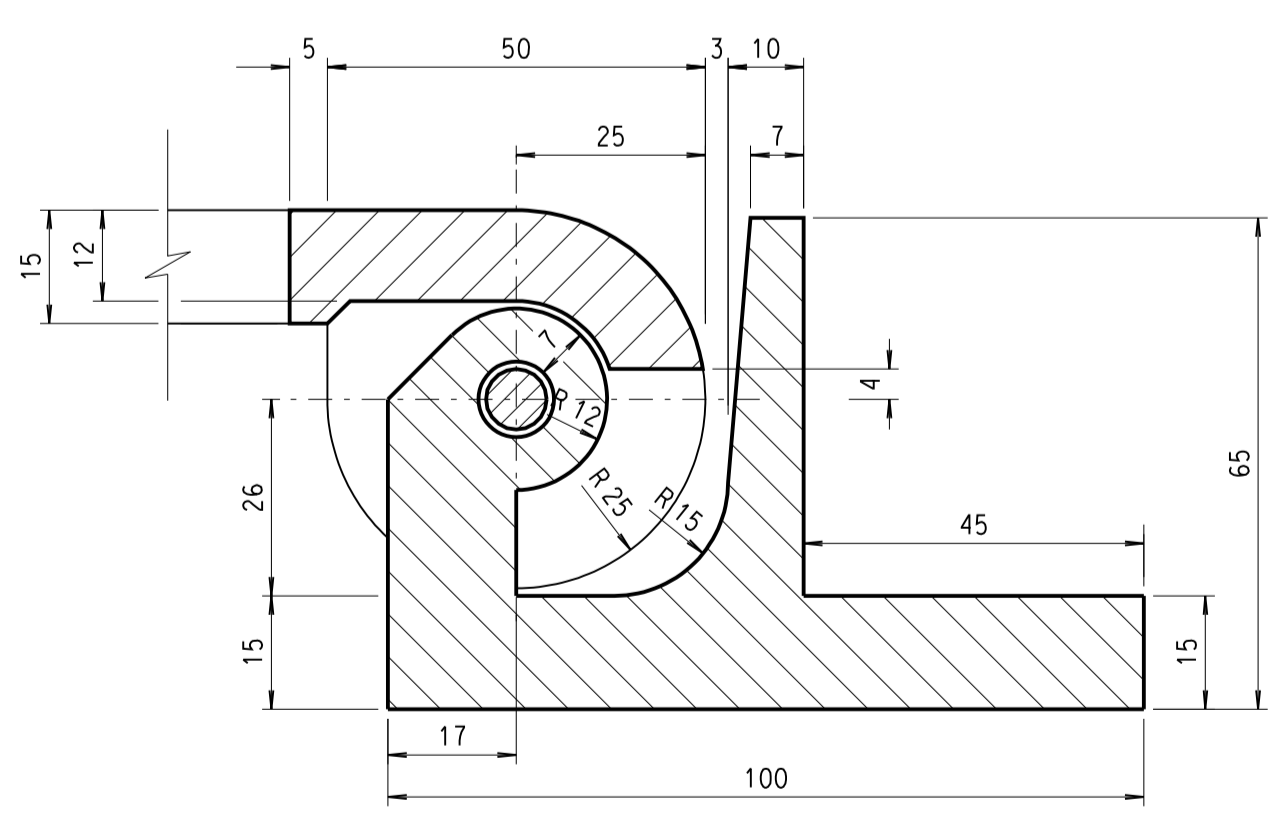
SECTION C-C
SCALE 1:2



SECTION D-D
SCALE 1:1



SECTION E-E
SCALE 1:1



SECTION F-F
SCALE 1:1

- NOTES:**
- ALL DIMENSIONS ARE IN MILLIMETRES UNLESS OTHERWISE SPECIFIED.
 - ALL GRATING CORNERS SHALL BE ROUNDED TO APPROXIMATELY 2mm RADIUS.
 - GRATINGS AND FRAMES SHALL BE CAST IRON CONFORMING TO GRADE EN-GJL-150 TO BS EN 1561.
 - GRATINGS AND FRAMES ARE DESIGNED FOR USE WITH 150 TO 250 HALF-ROUND OR "U" CHANNELS.
 - ALL CAST IRON UNITS SHALL BE COATED WITH A BITUMEN COATING.
 - GAPS BETWEEN GRATING UNITS SHALL NOT EXCEED 3. THE OVERALL LENGTH OF CHANNEL GRATING SHALL MAKE DUE ALLOWANCE FOR GAPS BETWEEN UNITS.
 - GRATINGS WITH OBLIQUE BARS PATTERN SHALL NOT BE SUBJECT TO VEHICULAR LOAD.
 - ALL STAINLESS STEEL BOLTS AND NUTS SHALL BE GRADE A4-80 TO BS EN 150 3506 PARTS 1 & 2.
 - STAINLESS STEEL WASHERS SHALL BE GRADE 1.4401 TO BS EN 10088.
 - GRATINGS TO BE USED ON CYCLE TRACKS SHALL REFER TO HIGHWAYS DEPARTMENT STRUCTURES STANDARD DRAWING No. SSD166.

- ABBREVIATIONS:**
- C/C CENTRE TO CENTRE
 - DIA DIAMETER
 - EQ. EQUAL
 - MIN MINIMUM
 - No. NUMBER
 - R RADIUS
 - ≥ NOT EXCEEDING

| no. | date | description | initial |
|-----|-------|---|-----------------------------|
| F | 06/16 | GENERAL REVISION OF DRAWING NOTES | SIGNED C.P. WONG, E/P2-3 |
| E | 09/09 | DRAWING RE-DRAWN WITH GRATING SLOTS AND DRAWING TITLE REVISED | SIGNED K.S. LAM, E/P2-2 |
| D | 02/91 | STAINLESS BOLT AND HALF COVER REVISED | SIGNED H.Y. HO |
| C | 05/88 | GENERAL REVISION | SIGNED H.Y. HO |
| B | 02/88 | DIRECTION OF THE FLOW AND NOTE 6 ADDED | SIGNED H.Y. HO |
| A | 01/88 | SEATING STEM REVISED AND PRISING SLOT DETAIL ADDED | SIGNED H.Y. HO |

| REVISION | | | |
|--------------------------|-----------|--------|-------|
| name | signature | date | |
| designed | H.Y. HO | SIGNED | 10/87 |
| drawn | P.Y. MA | SIGNED | 10/87 |
| senior technical officer | H.Y. HO | SIGNED | 10/87 |
| project engineer | E. | SIGNED | 05/88 |
| senior engineer | S. E. | SIGNED | 05/88 |

approved
SIGNED
J. A. KESSLER
Chief Highway Engineer

contract no.
file no.
project no.
contract

drawing title
HINGED CHANNEL GRATING FOR FOOTWAY ON STRUCTURES

drawing no. **SSD94-F** scale **AS SHOWN**

office **BRIDGES AND STRUCTURES DIVISION** 結構標部及
HONG KONG DEPARTMENT OF HIGHWAYS 香港路政署

