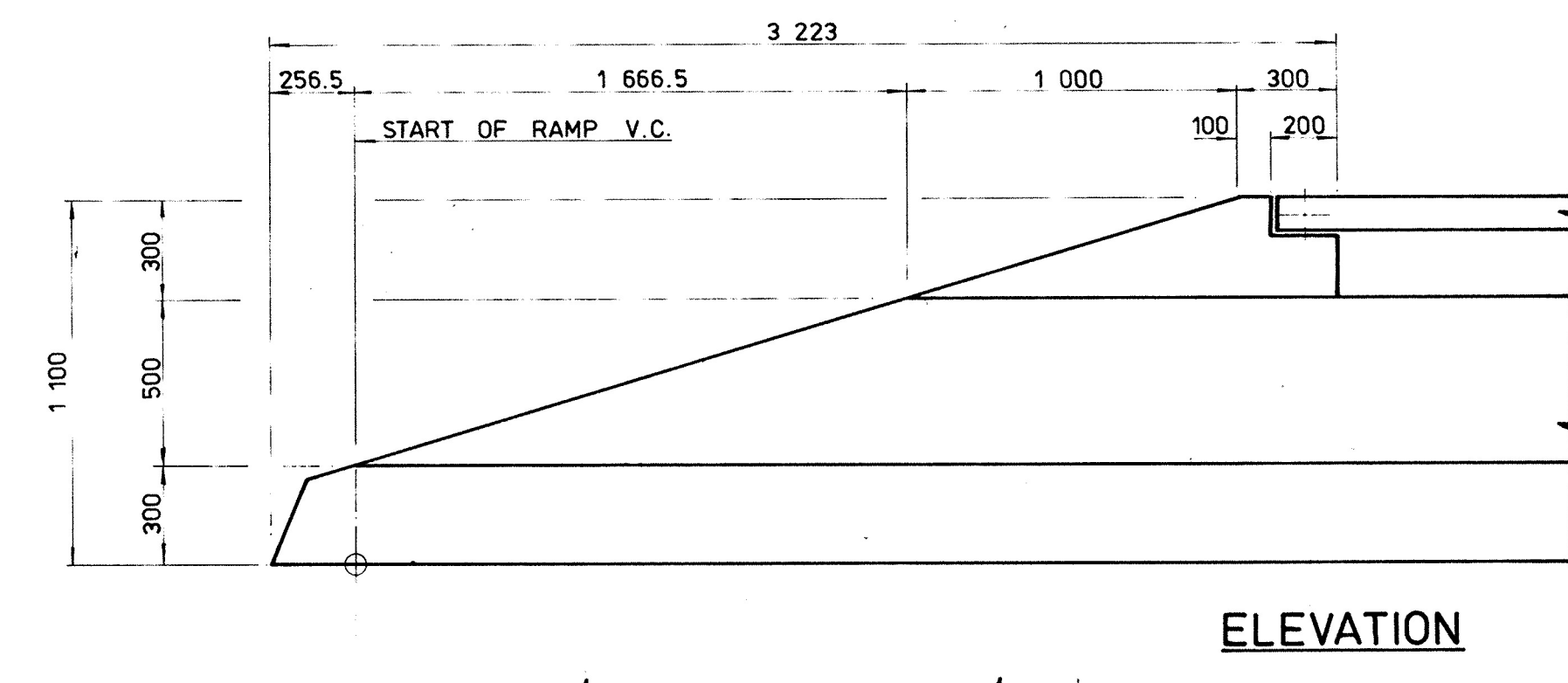
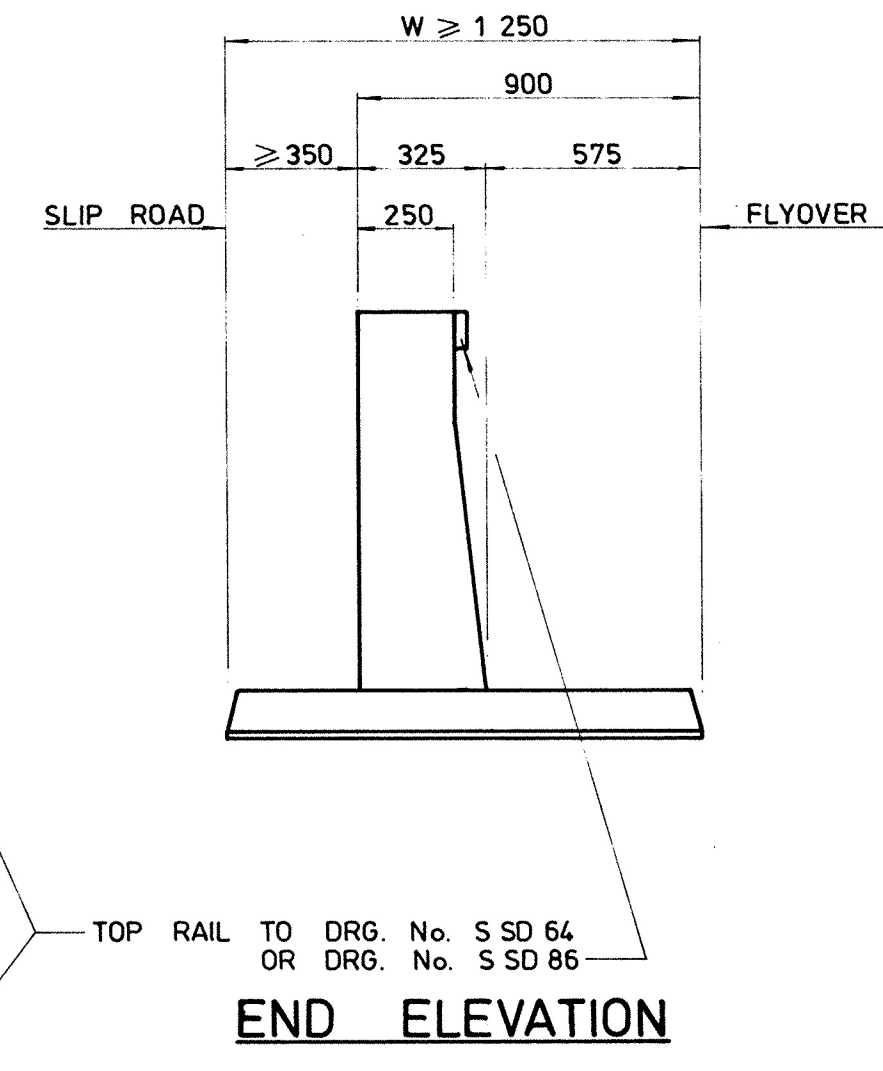
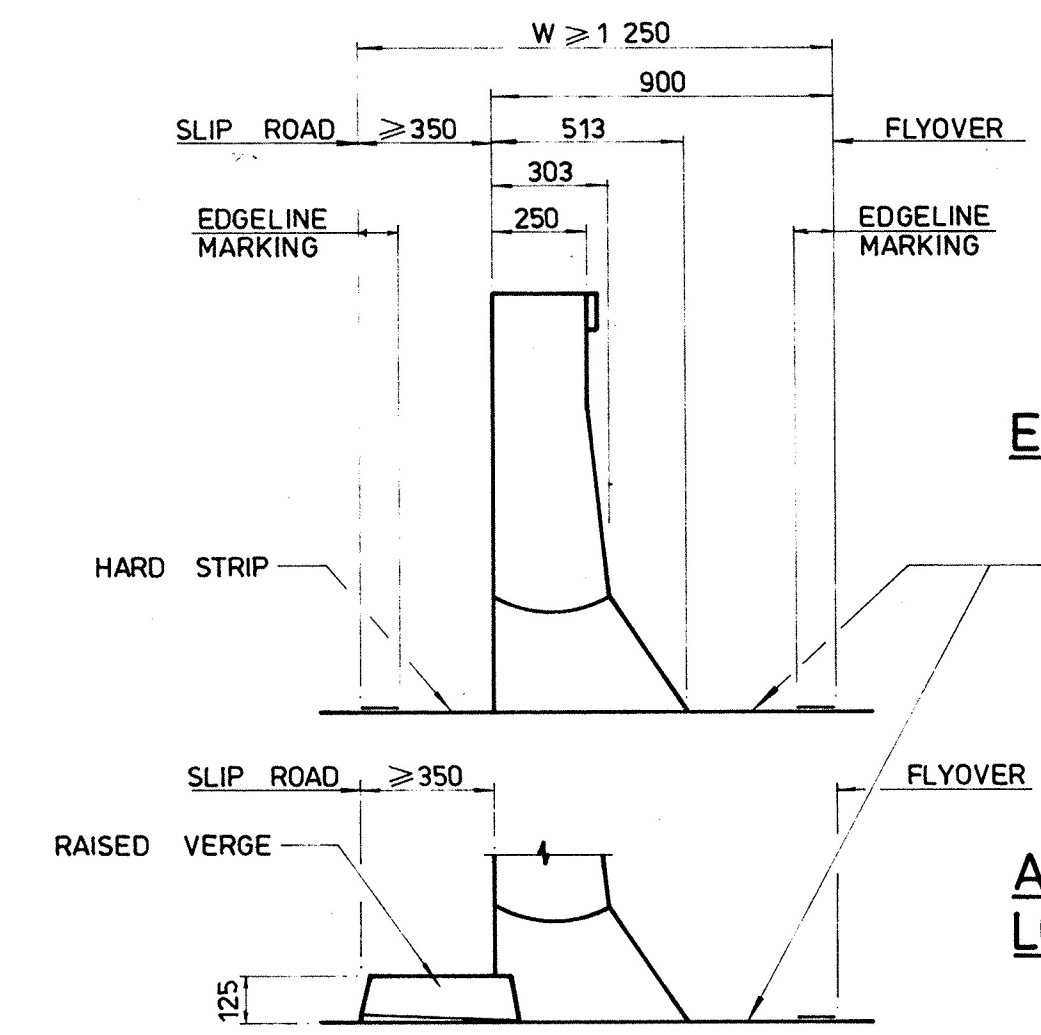


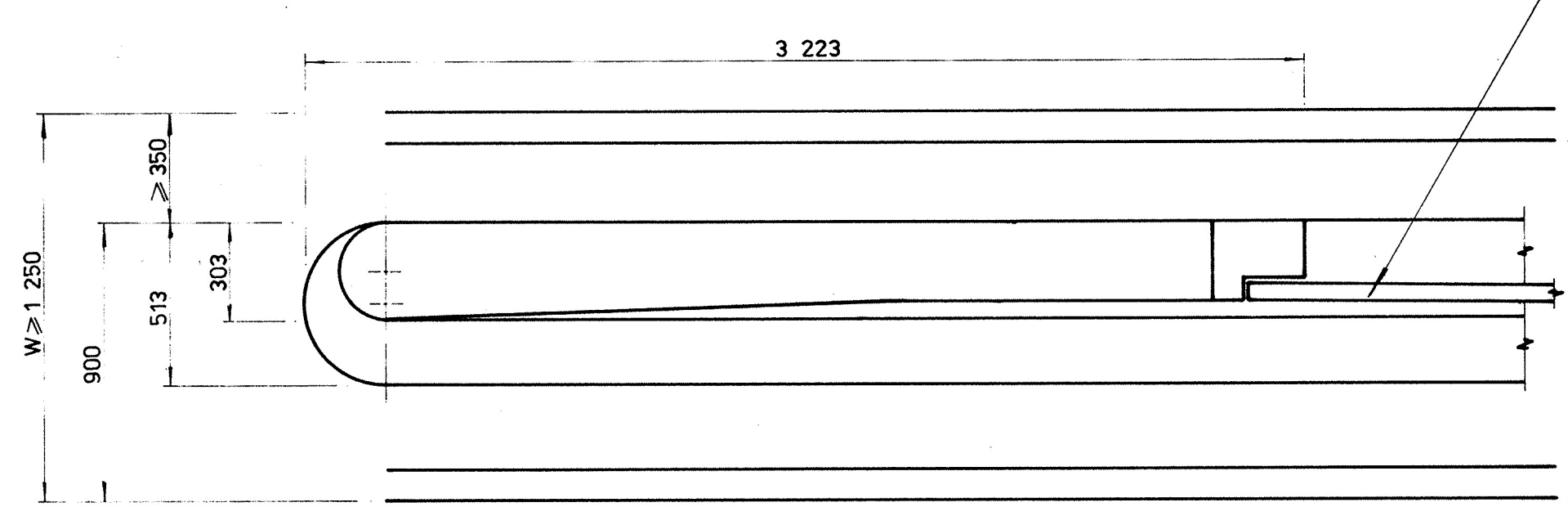
PLINTH WITH RAISED VERGE



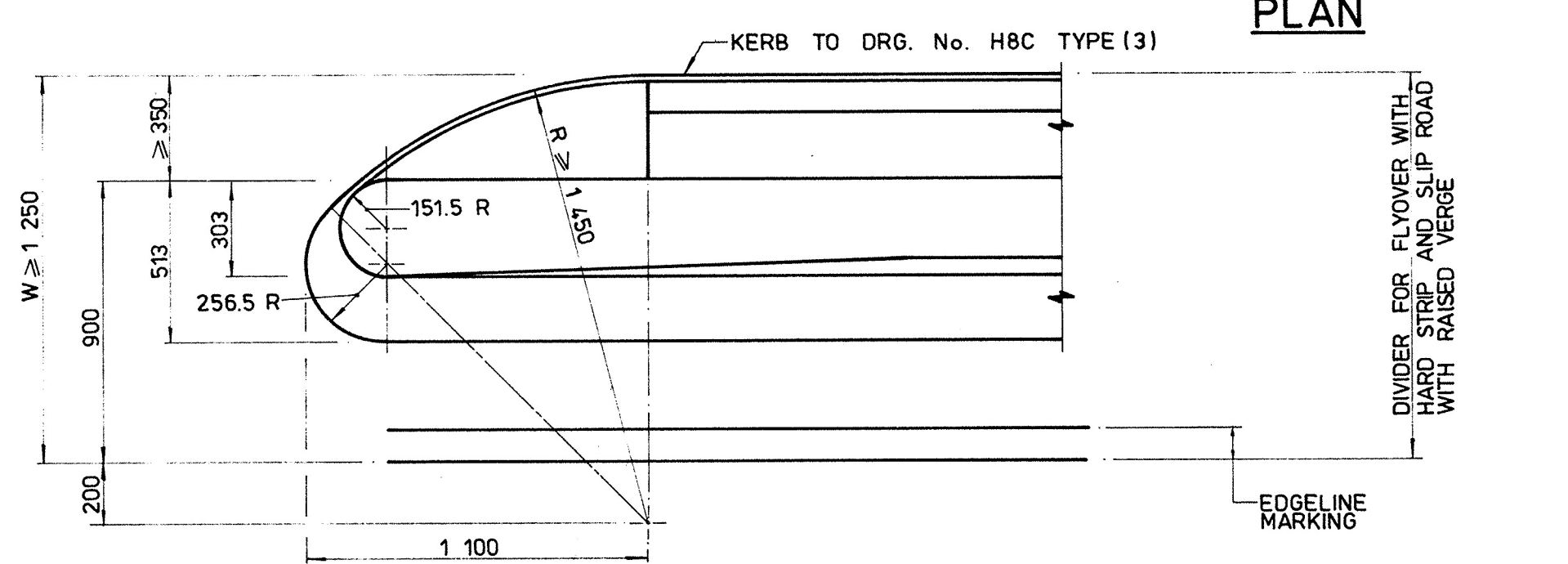
ALTERNATIVE ELEVATION FOR LOW LEVEL RAISED VERGE



ALTERNATIVE END ELEVATION FOR LOW LEVEL RAISED VERGE



ALTERNATIVE ELEVATION FOR LOW LEVEL RAISED VERGE



PROFILED PLINTH

- NOTES:**
1. DIMENSIONS ARE IN MILLIMETRES.
 2. THIS DRAWING IS TO BE USED IN CONJUNCTION WITH DRG. No. S SD 64 AND DRG. No. S SD 86 FOR PARAPETS ON DIVIDERS BETWEEN FLYOVER RAMPS AND GROUND LEVEL SLIP ROADS.

A	12/98	DRAWING No. AND TITLE AMENDED	
no.	date	description	initial
REVISION			
		name	date
surveyed			
designed			
drawn			
traced		S. K. CHU	FEB. 82
checked			
approved			

contract no.
file no.
project no.
contract
STANDARD DETAIL

drawing title
CONCRETE VEHICLE PARAPETS END DETAIL FOR FLYOVER RAMPS

drawing no. **S SD 8 A** scale **1 : 20**

office
STRUCTURES DIVISION

