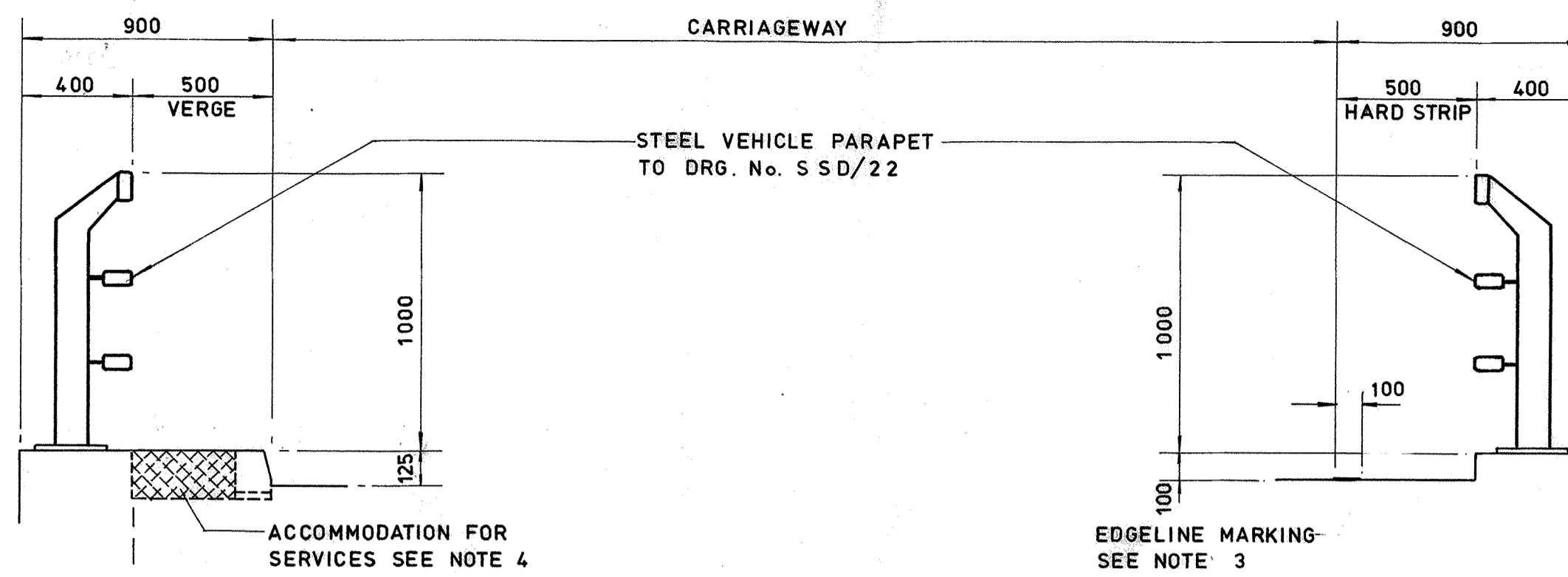


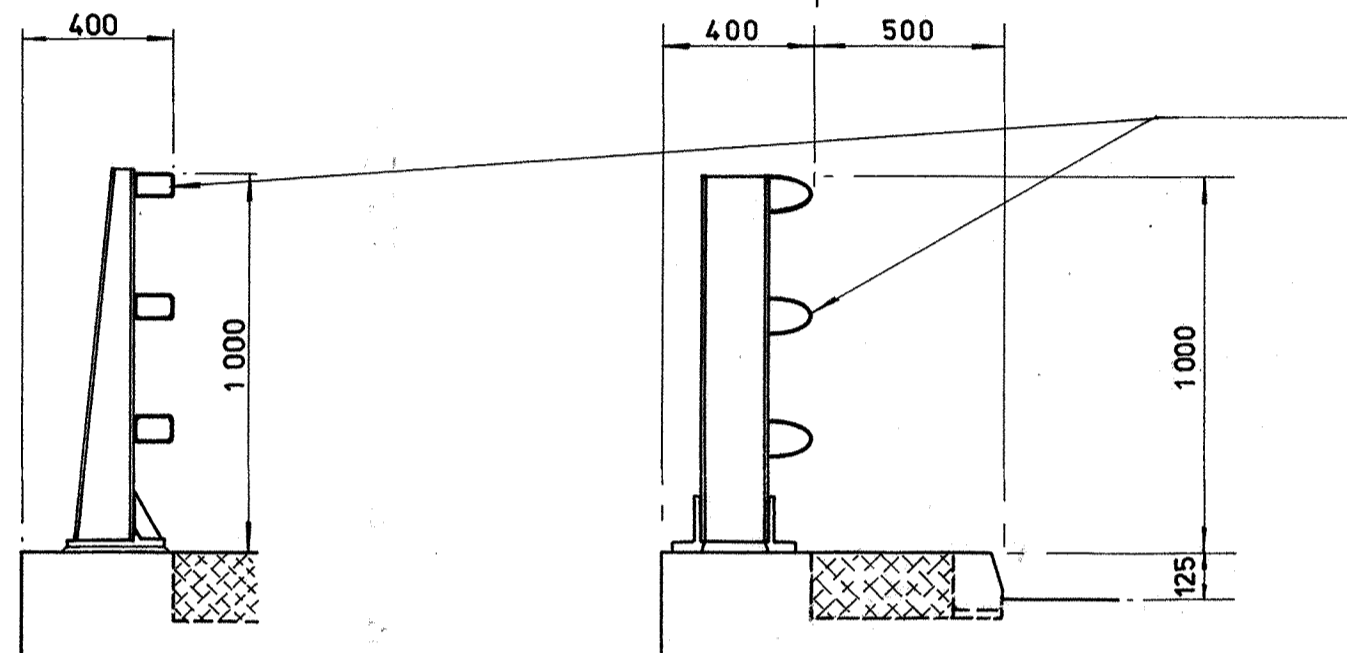
STEEL VEHICLE PARAPET WITH RAISED VERGE



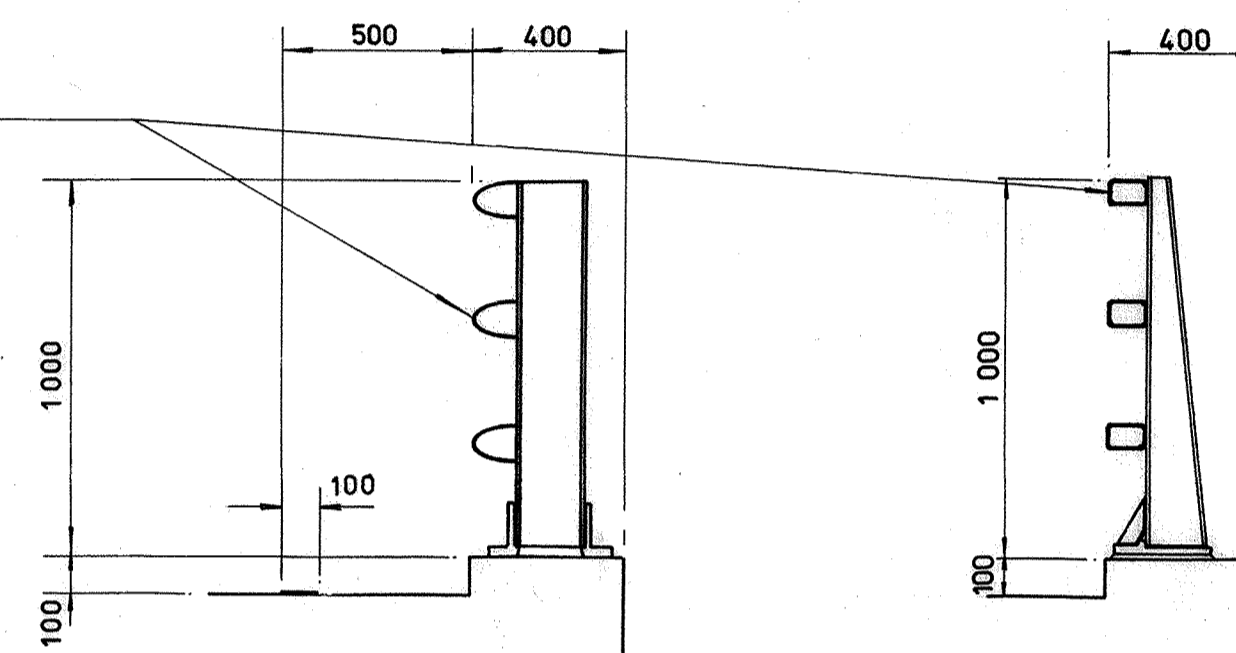
STEEL VEHICLE PARAPET WITH FLUSH HARD STRIP

EDGELINE MARKING - SEE NOTE 3

ALUMINIUM VEHICLE PARAPET WITH RAISED VERGE

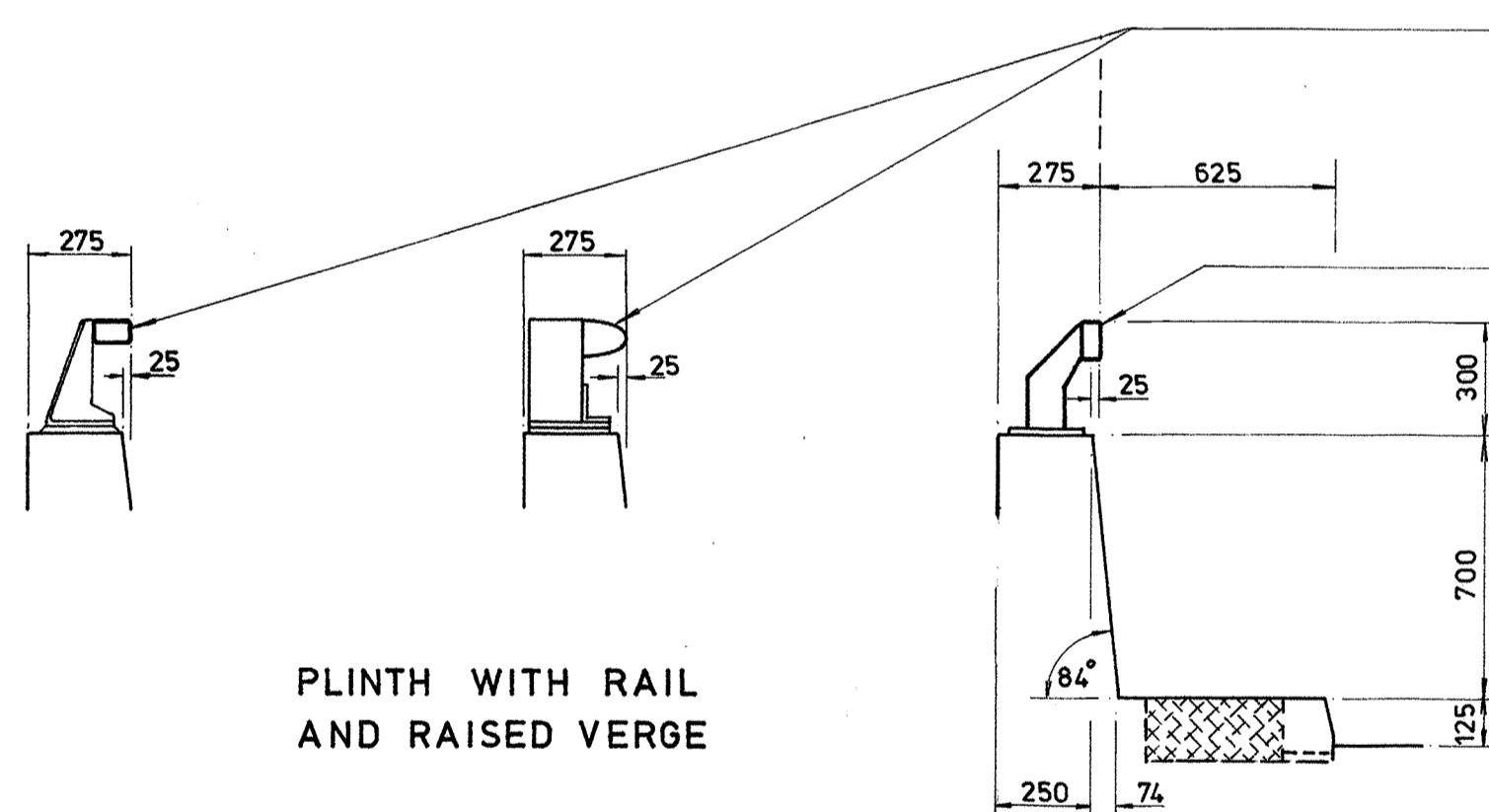


ALUMINIUM VEHICLE PARAPET TO DRG. No. S SD 23(1) & (2) & S SD 24



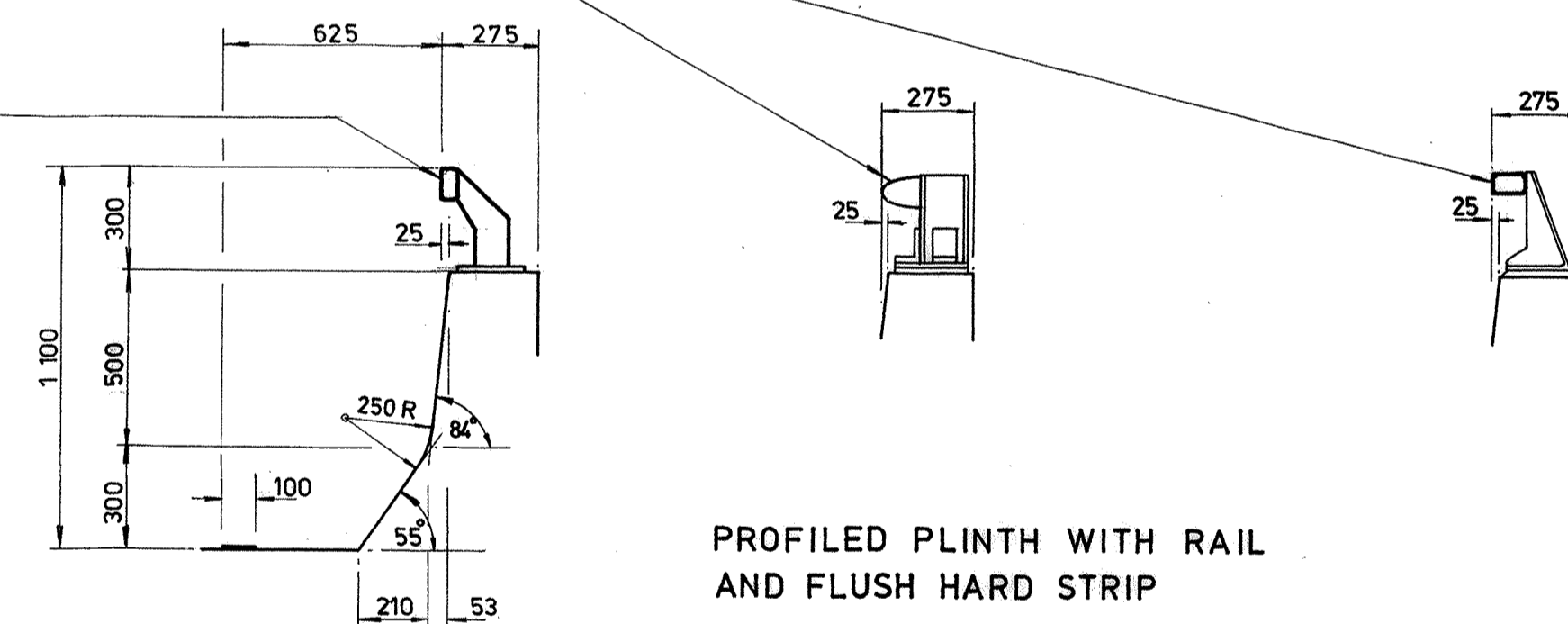
ALUMINIUM VEHICLE PARAPET WITH FLUSH HARD STRIP

PLINTH WITH RAIL AND RAISED VERGE



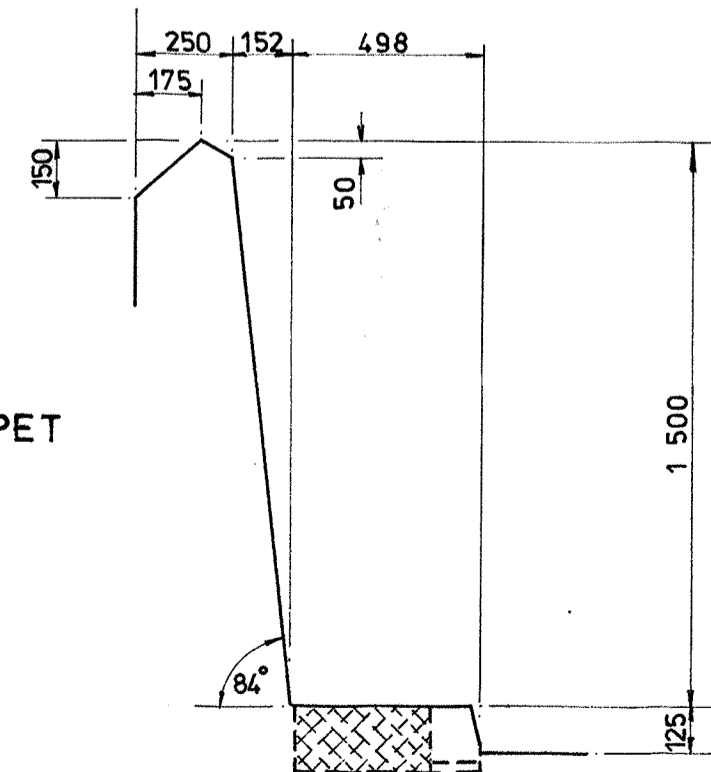
ALUMINIUM TOP RAIL TO DRG. No. S SD 86 & S SD 89

STEEL TOP RAIL TO DRG. No. S SD 64

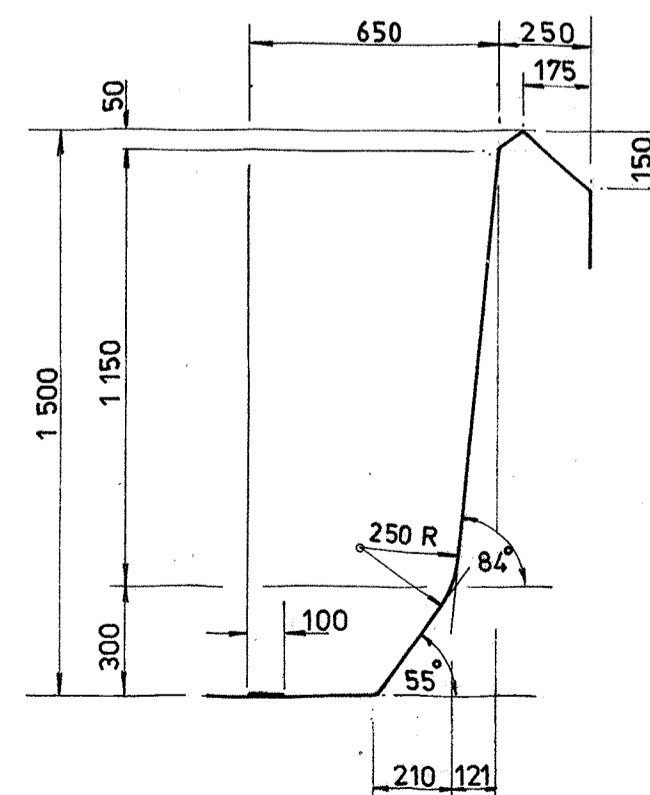


PROFILED PLINTH WITH RAIL AND FLUSH HARD STRIP

HIGH CONTAINMENT PARAPET WITH RAISED VERGE



HIGH CONTAINMENT PROFILED PARAPET WITH FLUSH HARD STRIP



- NOTES:
1. DIMENSIONS ARE IN MILLIMETRES.
  2. STRUCTURES ARE TO BE PROVIDED WITH RAISED VERGES OR HARD STRIPS TO MATCH THE EDGE DETAILS OF THE ADJOINING HIGHWAY.
  3. EDGELINE MARKINGS SHOULD CONSIST OF WHITE PAINTED LINES 100 mm WIDE. ON LIMITED ACCESS STRUCTURES WHERE REPAINTING IS LIKELY TO BE NEGLECTED, SUITABLE REFLECTIVE MATERIAL SUCH AS THERMO-PLASTIC, CARRIAGEWAY MARKING FILM, COLDHARDENING PLASTIC OR CHLORINATED RUBBER PAINT SHOULD BE USED.
  4. RAISED VERGES CAN ACCOMMODATE POWER LINES, TELEPHONE CABLES AND OTHER SERVICES MORE EASILY THAN FLUSH HARD STRIPS.
  5. RAISED VERGES OFFER MORE SECURITY TO PERSONS LEAVING STALLED VEHICLES THAN FLUSH HARD STRIPS.
  6. DIMENSIONS ARE GIVEN AS GUIDES TO ACCEPTABLE PRACTICE AND MAY BE VARIED TO SUIT INDIVIDUAL STRUCTURES.
  7. THE HORIZONTAL CLEARANCES SHOWN REFER TO DESIGN SPEEDS OF 50 km/hr OR LESS. FOR HIGHER DESIGN SPEEDS, THE MINIMUM CLEARANCE REQUIREMENTS GIVEN IN TE/PN 3 SHOULD BE PROVIDED.
  8. HIGH CONTAINMENT PARAPETS SHOULD BE USED ON RAILWAY OVERBRIDGES AND AT OTHER HIGH RISK SITES.

	name	date
surveyed		
designed	<i>Law</i>	9.79
drawn		
traced	<i>W. Edwards</i>	22.8.79
checked	<i>Law</i>	23.10.79
approved	<i>Law</i>	23.10.79

contract no. \_\_\_\_\_

file no. \_\_\_\_\_

project no. \_\_\_\_\_

contract \_\_\_\_\_

drawing title

### TYPICAL EDGE DETAILS FOR LIMITED ACCESS HIGHWAY STRUCTURES

drawing no. **S SD 63 J** scale **1 : 20**

office

**STRUCTURES DIVISION**



no.	date	description	initial
J	9.5.85	250 R CURVE ADDED TO PROFILED PARAPET	<i>W</i>
H	14.6.83	REFER DRGS. REVISED	<i>D</i>
G	5.11.82	ALTERNATIVE TYPES OF ALUMINIUM PARAPETS ADDED	<i>R</i>
F	14.10.81	ALUMINIUM TOP RAIL ADDED & EDGE DIMENSIONS CHANGED	<i>Law</i>
E	7.1.81	DIMENSIONS CORRECTED TO AGREE WITH DRG. S SD 64	<i>D</i>
D	6.8.80	HIGH CONTAINMENT PARAPETS ADDED AND PROFILED PLINTH CHANGED	<i>Law</i>
C	28.5.80	PROFILED PLINTH CHANGED	<i>al.</i>
B	7.1.80	NOTE 7 ADDED	<i>Law</i>
A	1.12.79	WIDTH OF EDGING MARKING AND NOTE 3 CHANGED	<i>Law</i>