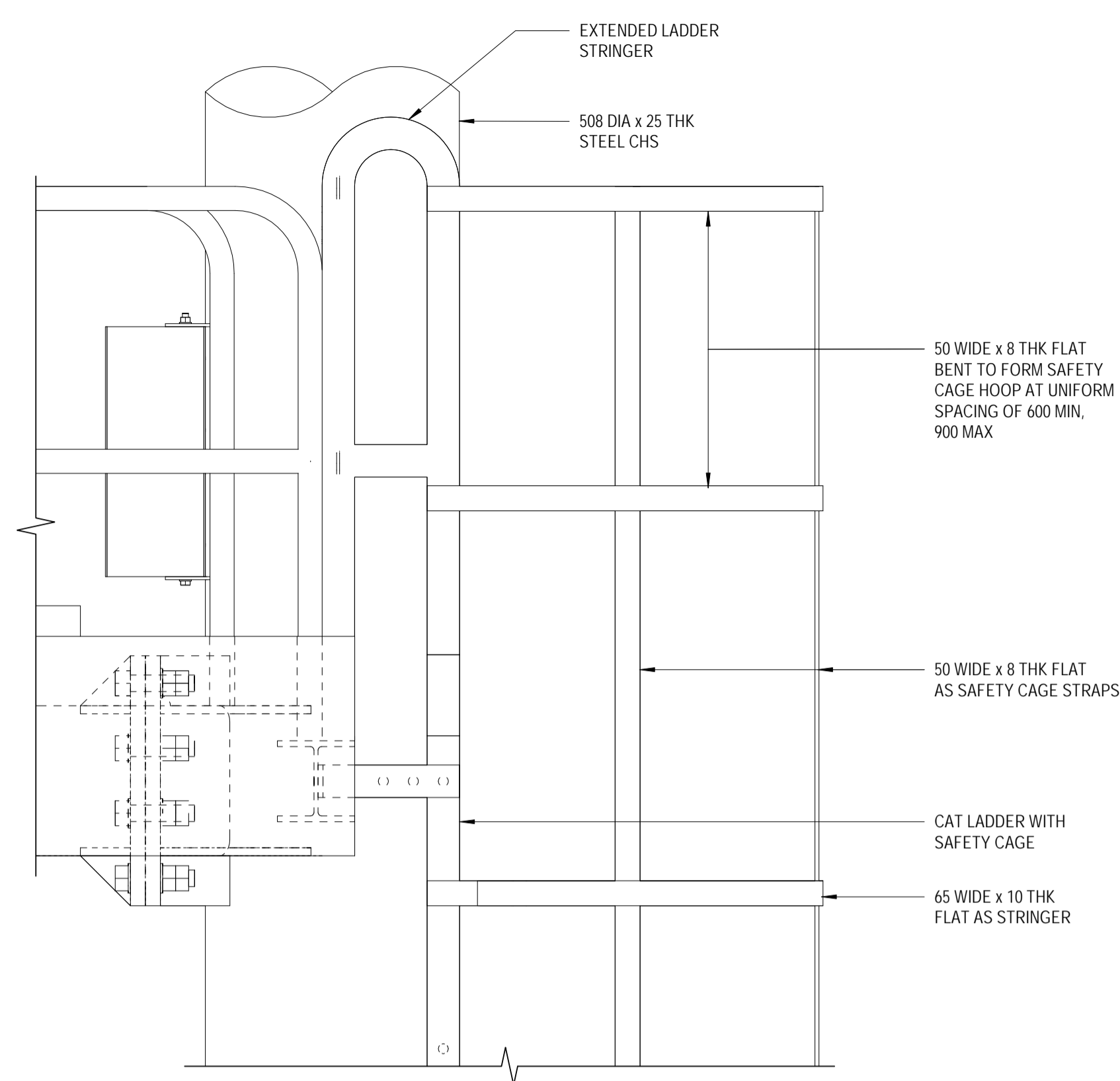


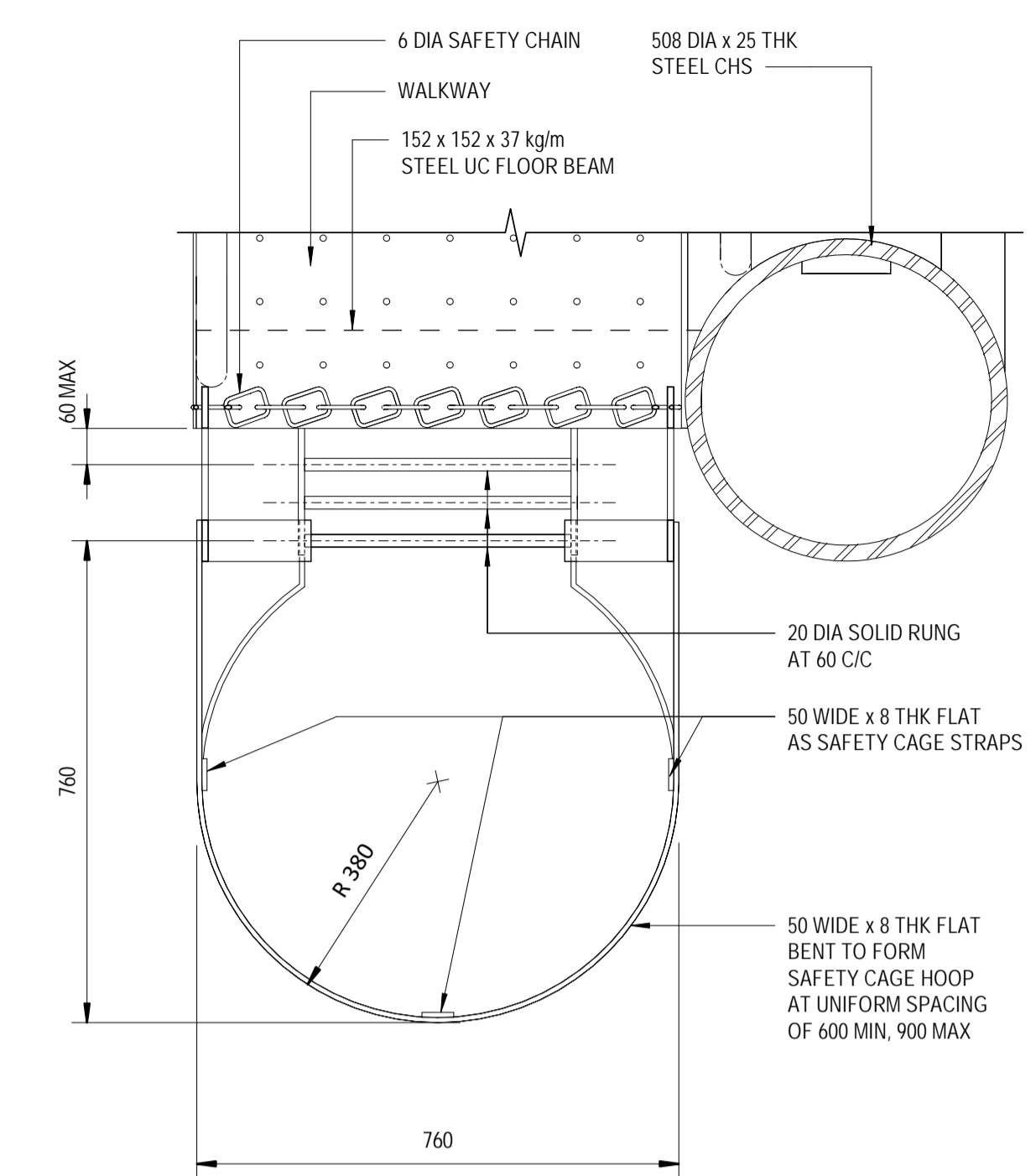
**TOP END OF CAT LADDER WITH SAFETY CAGE ELEVATION**

SCALE 1:10



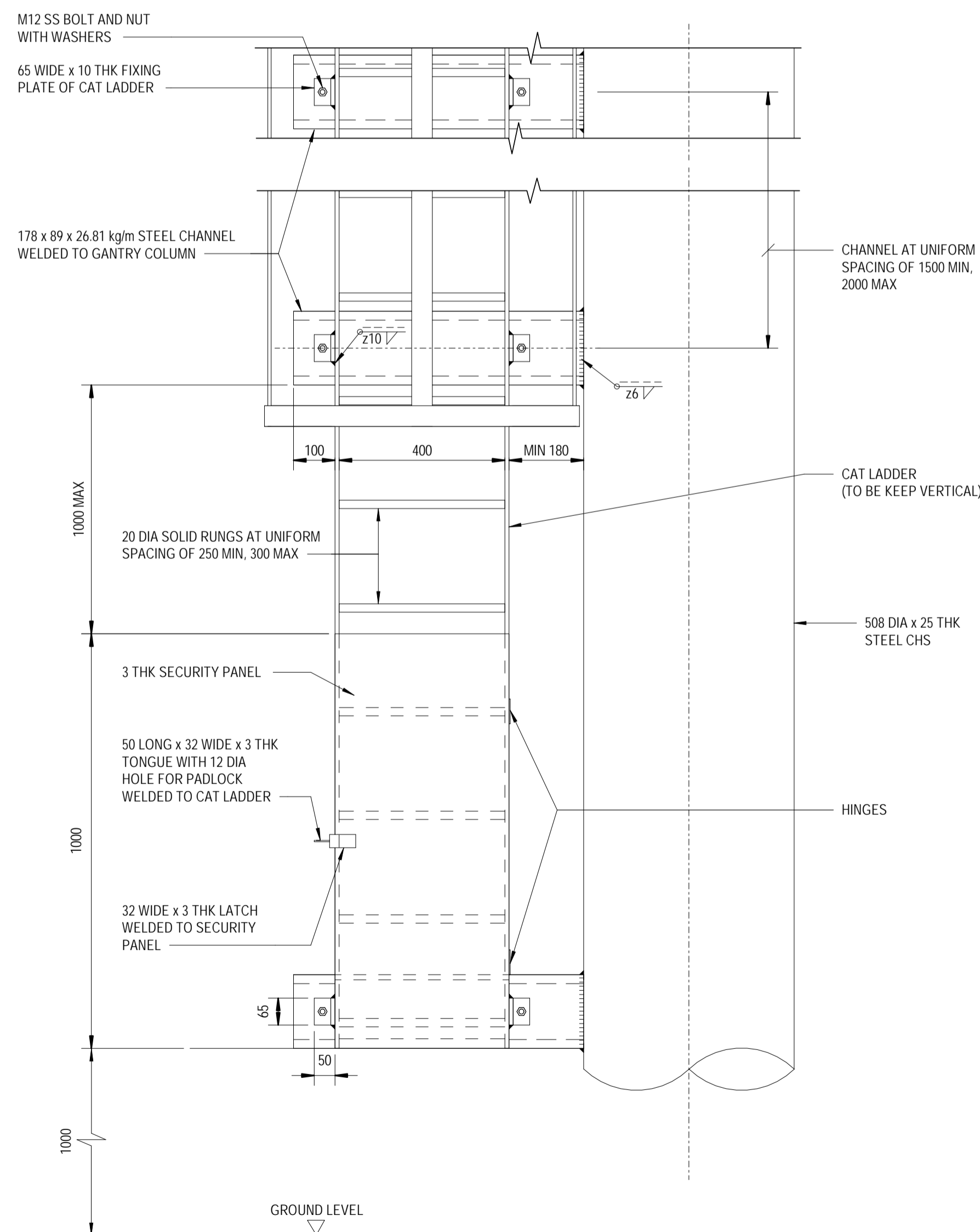
**ELEVATION 14**

SCALE 1:10



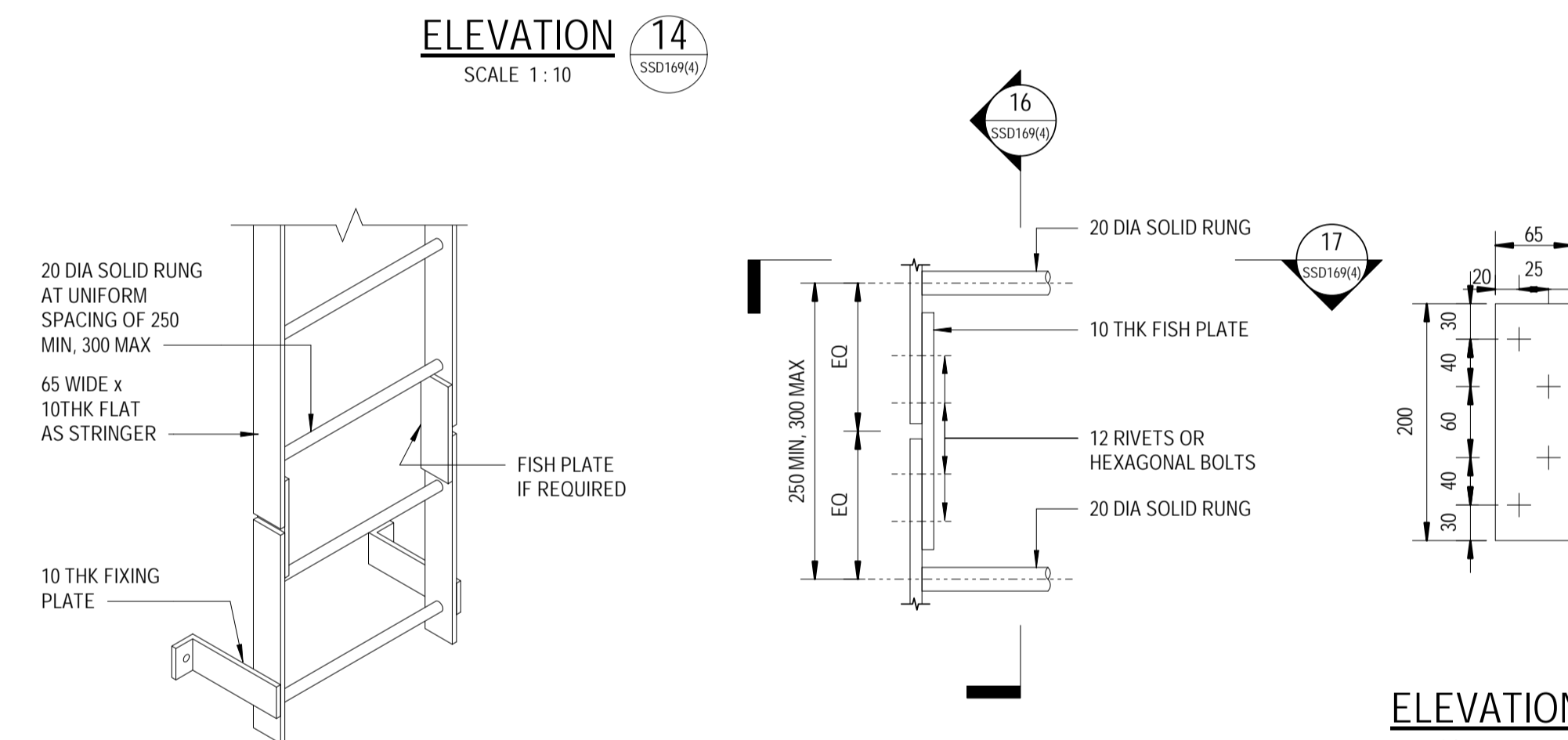
**SECTION 15**

SCALE 1:10



**BOTTOM END OF CAT LADDER WITH SAFETY CAGE ELEVATION**

SCALE 1:10



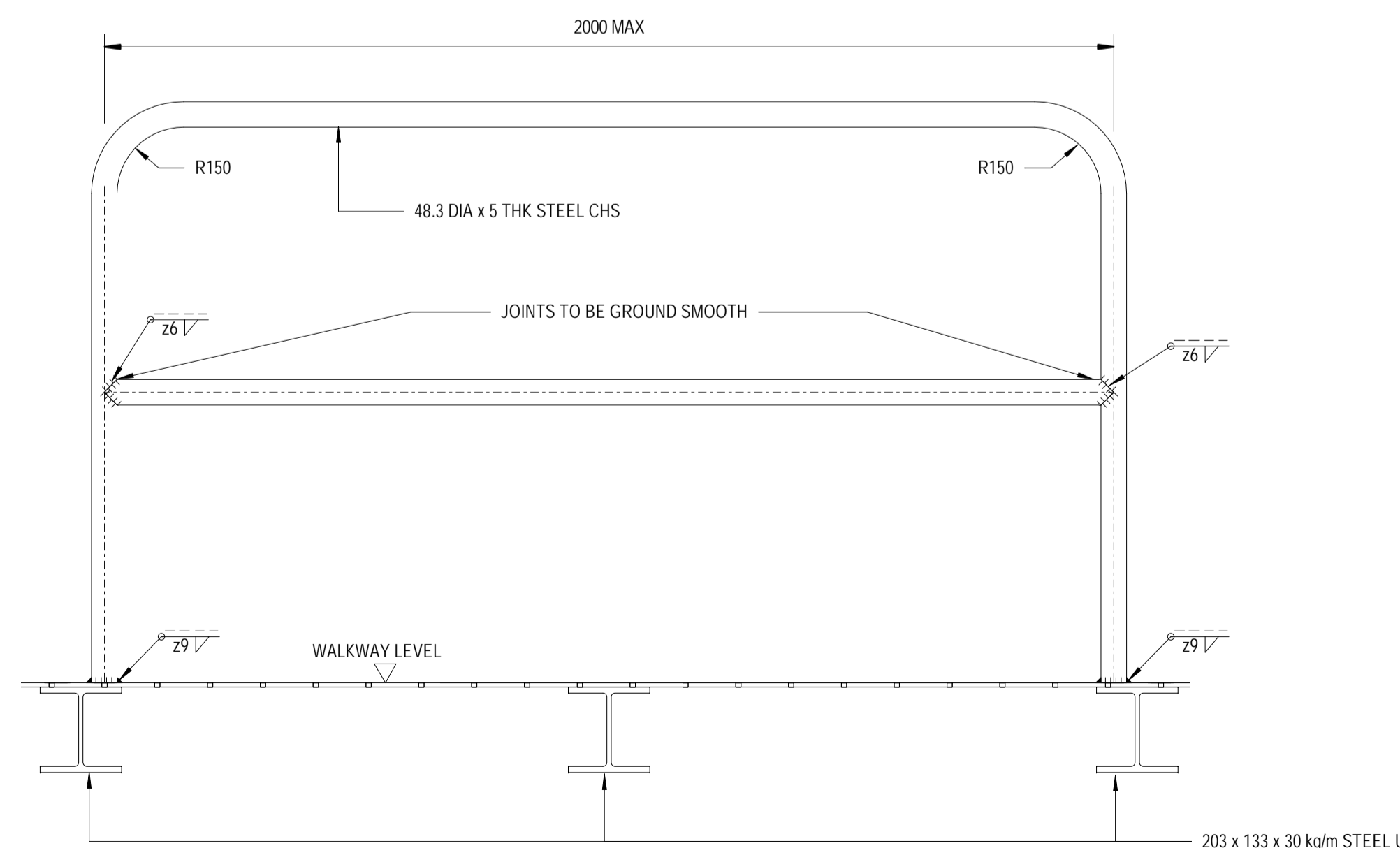
**TYPICAL ELEVATION**

SCALE 1:5

**ISOMETRIC VIEW OF CAT LADDER**

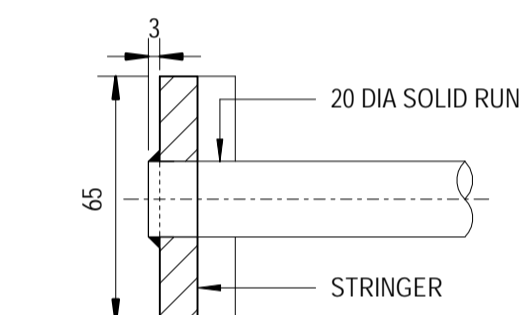
DIAGRAMMATIC

**FISH PLATE CONNECTION DETAILS OF CAT LADDER**



**TYPICAL RAILING DETAILS**

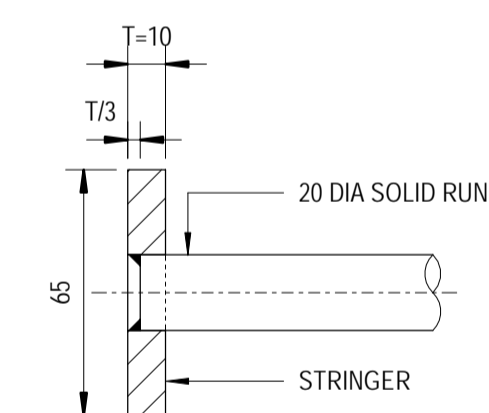
SCALE 1:10



**SECTION 17**

SCALE 1:2

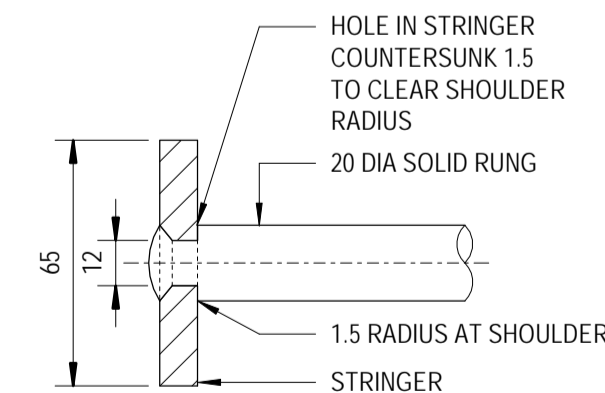
(WELDED TYPE 1)



**SECTION 17**

SCALE 1:2

(WELDED TYPE 2)



**SECTION 17**

SCALE 1:2

(RIVETED)

(NOTE: SOLID RUNGS SHALL BE EITHER WELDED OR RIVETED TO STRINGERS ACCORDING TO EITHER ONE OF THE ABOVE DETAILS)

NOTES:  
1. THIS DRAWING SHALL BE READ IN CONJUNCTION WITH DRAWING No. SSD169 (1)

no.	date	description	initial		
<b>REVISION</b>					
		name	signature	date	
designed		C. W. LO	SIGNED	08/2022	
drawn		S. Y. YEUNG	SIGNED	08/2022	
checked		senior technical officer	K. W. FUNG	SIGNED	08/2022
		project engineer	C. W. LO	SIGNED	08/2022
		senior engineer	M. H. TAM	SIGNED	08/2022

approved  
SIGNED  
Franky F K PONG  
Chief Highway Engineer  
08/2022  
date

contract no.

file no. HyD BS/10-9/2/0

project no.

contract

drawing title  
**TRAFFIC CONTROL AND SURVEILLANCE SYSTEM  
ROADSIDE CANTILEVER TYPE  
FULLY VARIABLE MESSAGE SIGN  
(SHEET 4 OF 4)**

drawing no. SSD169(4) scale AS SHOWN

office  
**BRIDGES AND STRUCTURES DIVISION**  
結橋  
構樑  
部及  
**HIGHWAYS DEPARTMENT**  
路政  
署  
HONG KONG