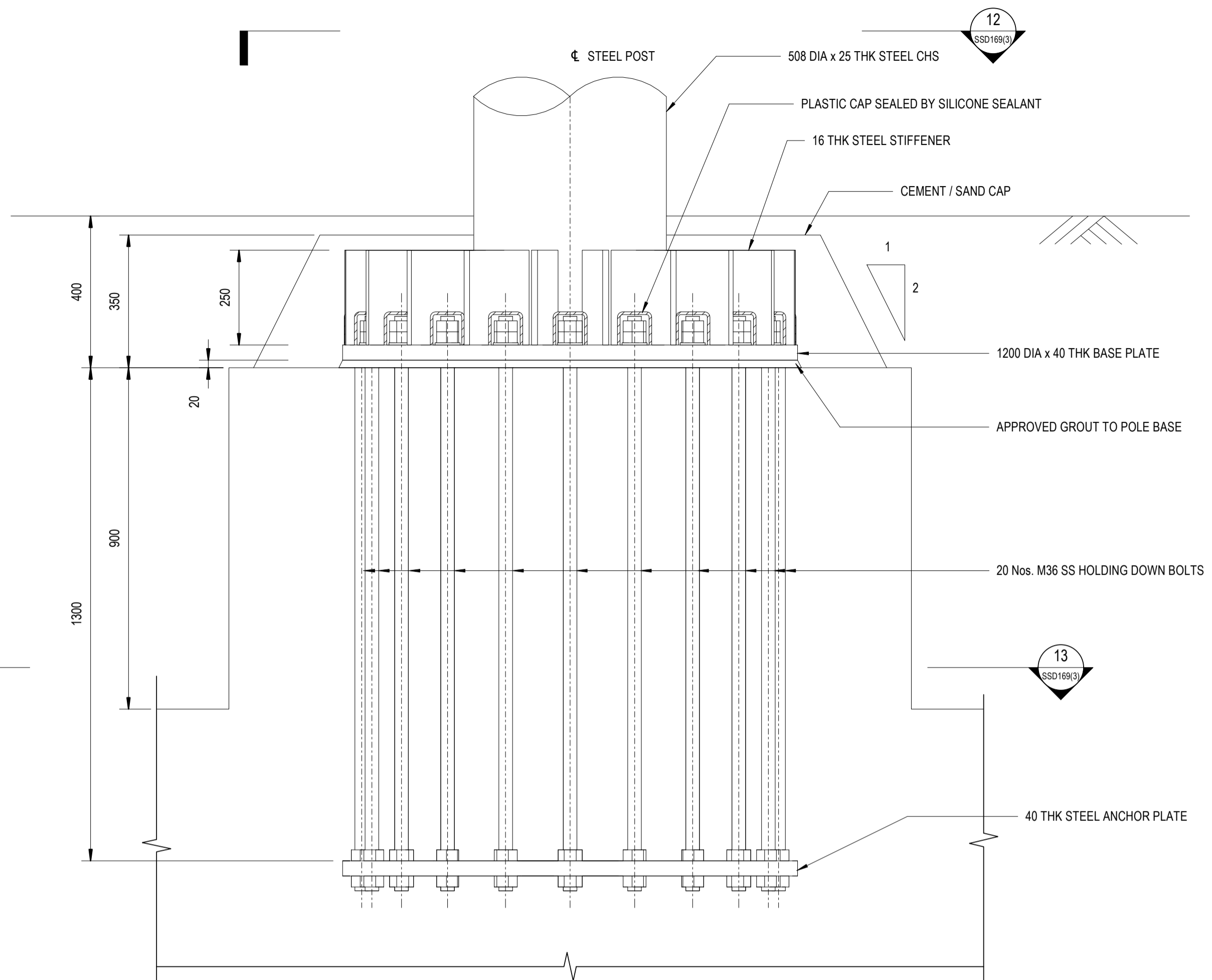
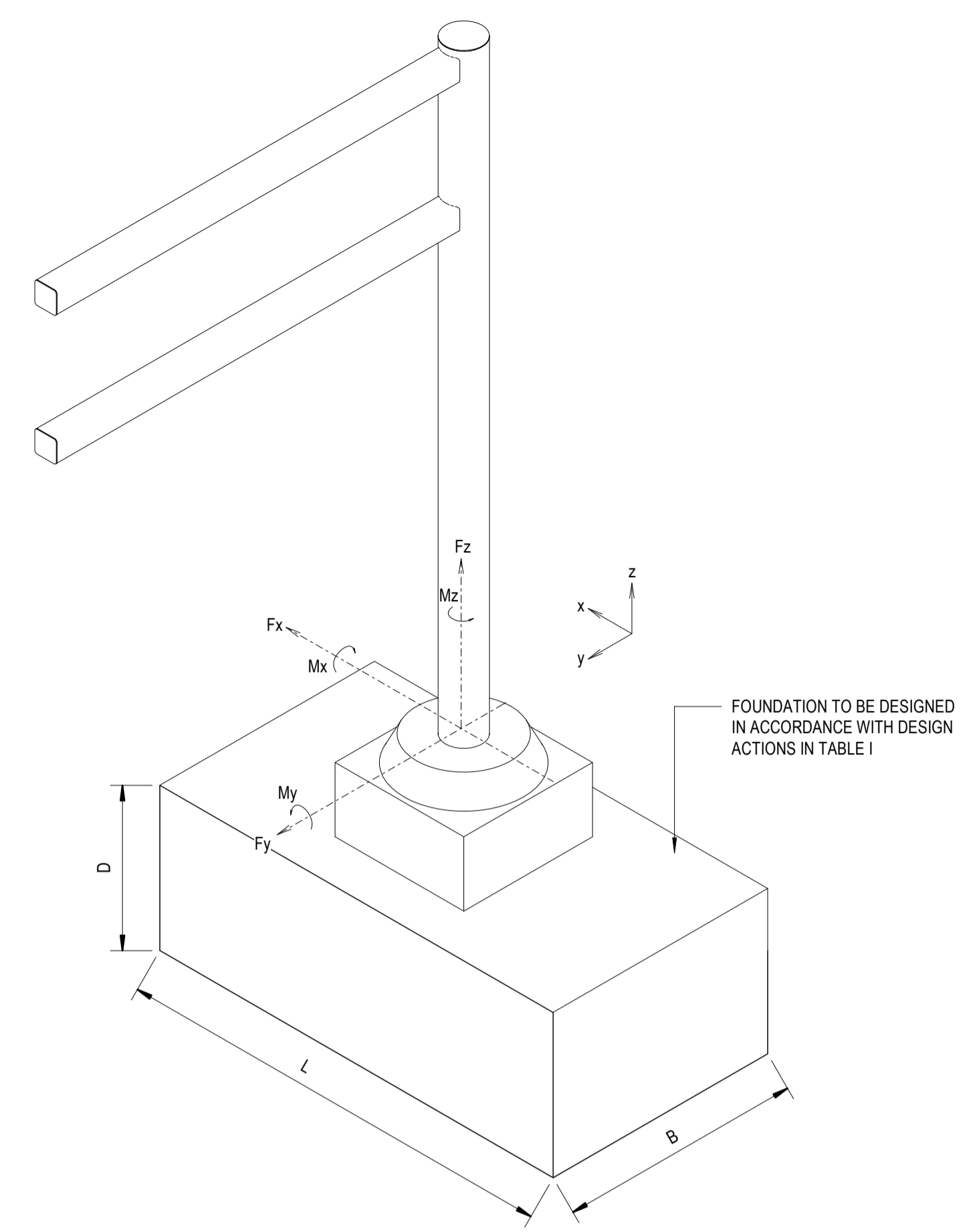


NOTES:  
 1. THIS DRAWING SHALL BE READ IN CONJUNCTION WITH DRAWING No. SSD169 (1)



**DETAIL**  
 SCALE 1:10

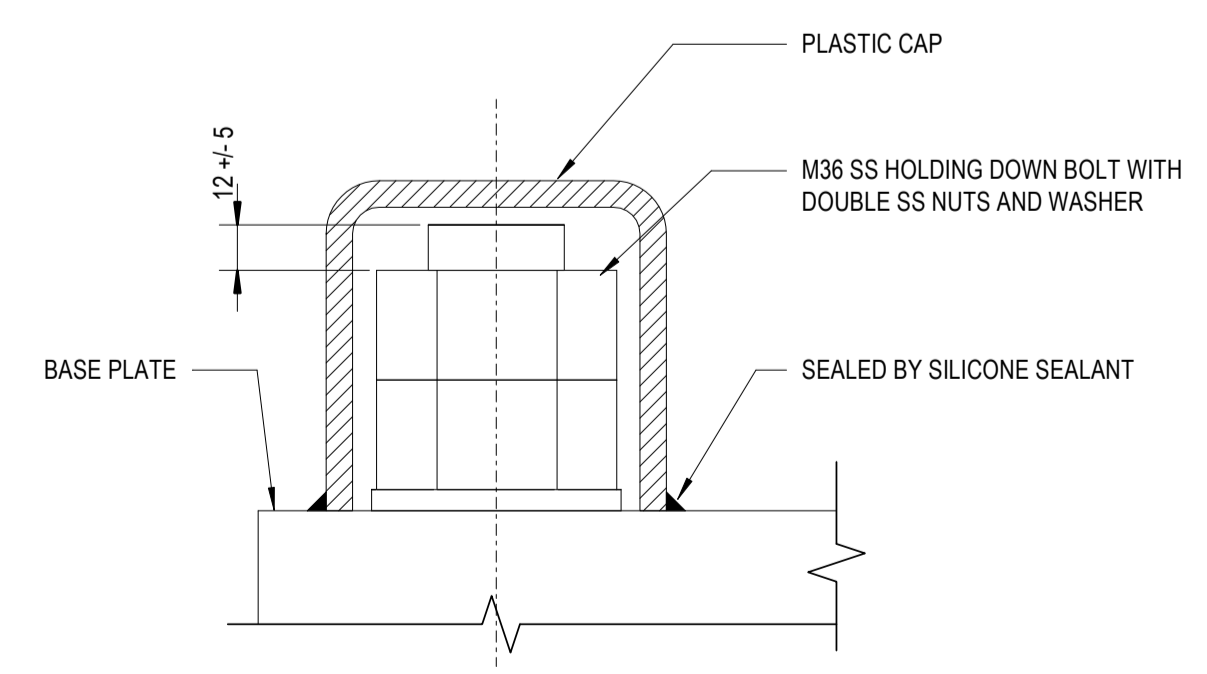


**ISOMETRIC VIEW**  
 DIAGRAMMATIC

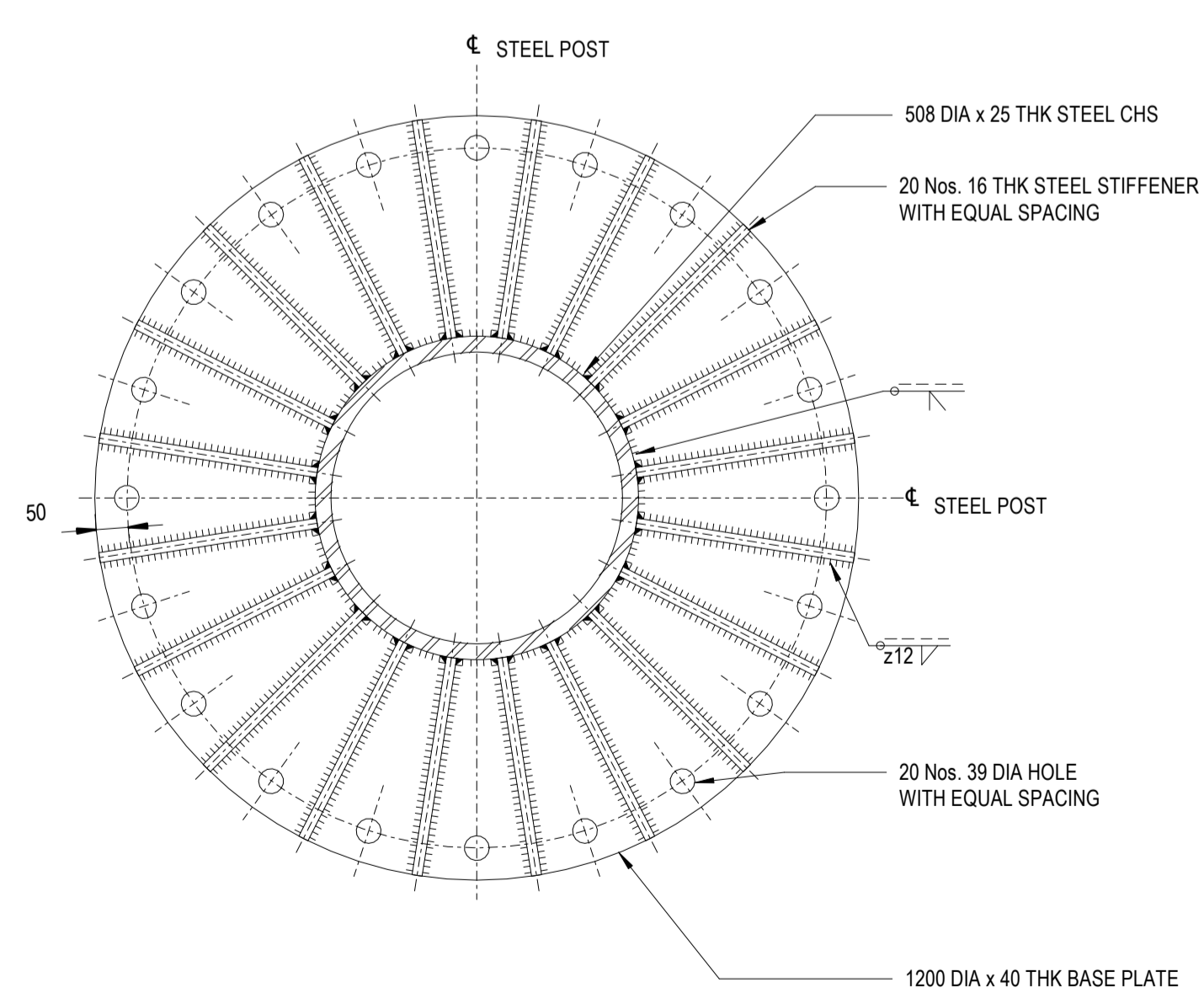
**TABLE I - UNFACTORED DESIGN ACTIONS AT BASE OF GANTRY COLUMN**

GANTRY SPAN (S) (mm)	FORCE (kN)			MOMENT (kNm)			SUGGESTED FOOTING SIZES (mm)		
	F <sub>x</sub>	F <sub>y</sub>	F <sub>z</sub>	M <sub>x</sub>	M <sub>y</sub>	M <sub>z</sub>	L	B	D
S ≤ 5800	100	40	130	520	630	270	5500	3000	2000

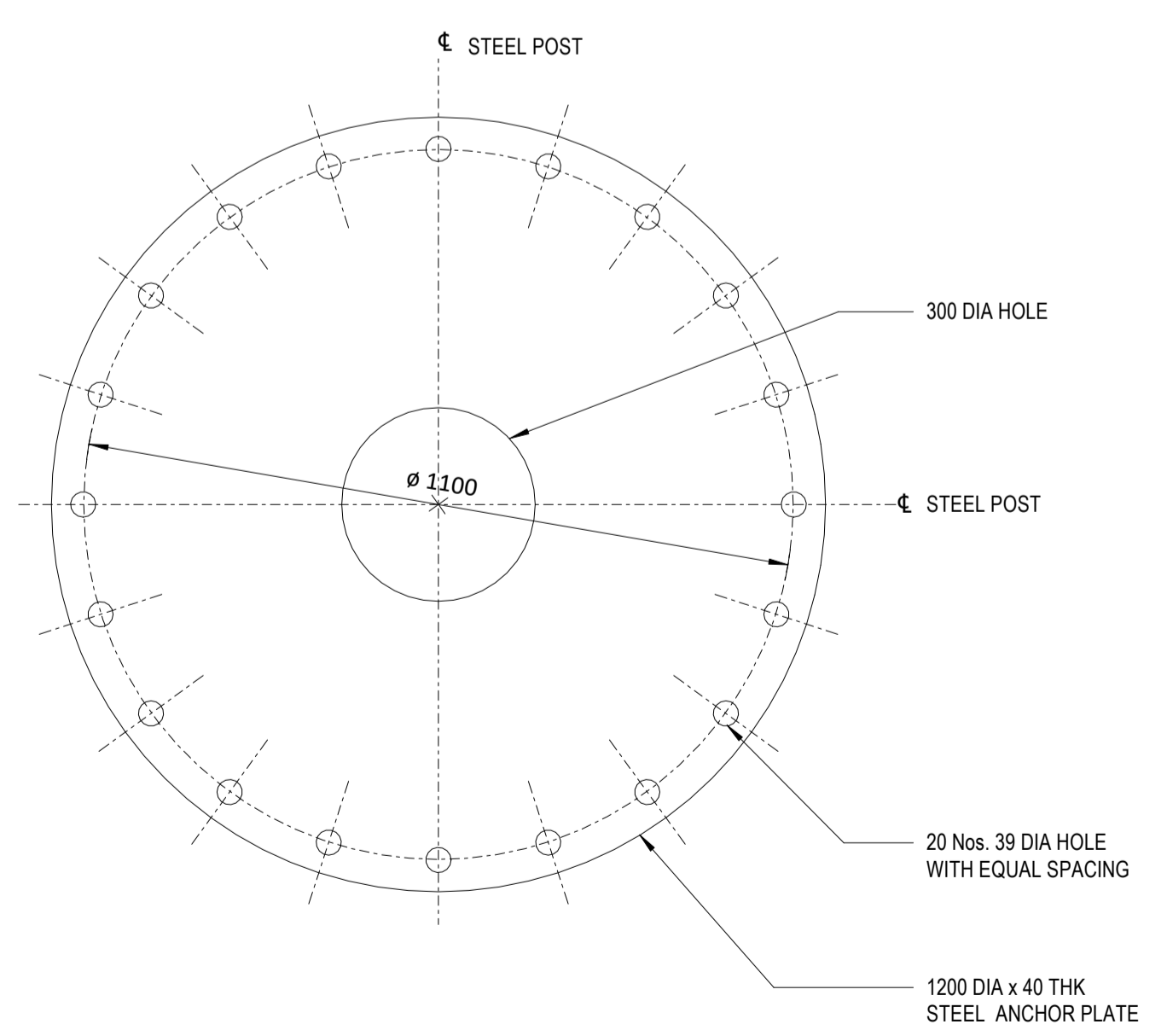
- NOTES:
- A WIND PRESSURE OF 3.3 kN/m<sup>2</sup> HAS BEEN ADOPTED IN THE DESIGN.
  - DEFINITION OF FORCES AND MOMENTS SEE ISOMETRIC VIEW.
  - SUGGESTED FOOTING SIZES ARE GIVEN FOR REFERENCE ONLY. SEPARATE DESIGN OF FOUNDATION SHALL BE PROVIDED TO SUIT SITE CONDITIONS.
  - DESIGN OF REINFORCED CONCRETE SHALL COMPLY WITH THE STRUCTURES DESIGN MANUAL FOR HIGHWAYS AND RAILWAYS (2013).



**ENLARGEMENT DETAILS OF PLASTIC CAP**  
 SCALE 1:2



**SECTION 12**  
 SCALE 1:10  
 (BOLT NOT SHOWN)



**SECTION 13**  
 SCALE 1:10  
 (BOLT NOT SHOWN)

no.	date	description	initial	
<b>REVISION</b>				
		name	signature	date
designed		C. W. LO	SIGNED	08/2022
drawn		S. Y. YEUNG	SIGNED	08/2022
senior technical officer		K. W. FUNG	SIGNED	08/2022
project engineer		C. W. LO	SIGNED	08/2022
senior engineer		M. H. TAM	SIGNED	08/2022
approved		SIGNED Franky F K PONG Chief Highway Engineer		08/2022 date

contract no.  
 file no. HyD BS/10-9/20  
 project no.  
 contract

drawing title  
**TRAFFIC CONTROL AND SURVEILLANCE SYSTEM  
 ROADSIDE CANTILEVER TYPE FULLY VARIABLE MESSAGE SIGN  
 (SHEET 3 OF 4)**

drawing no. **SSD169(3)** scale AS SHOWN

office **BRIDGES AND STRUCTURES DIVISION** 結 橋 構 樑 部 及

**HIGHWAYS DEPARTMENT** 路 政 署  
 HONG KONG 香 港

