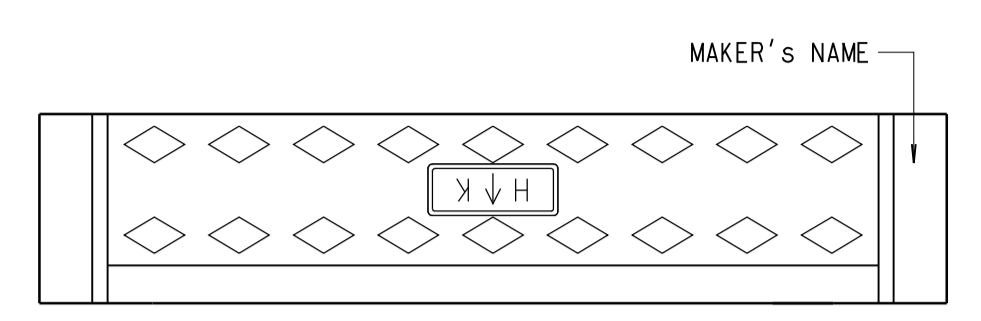
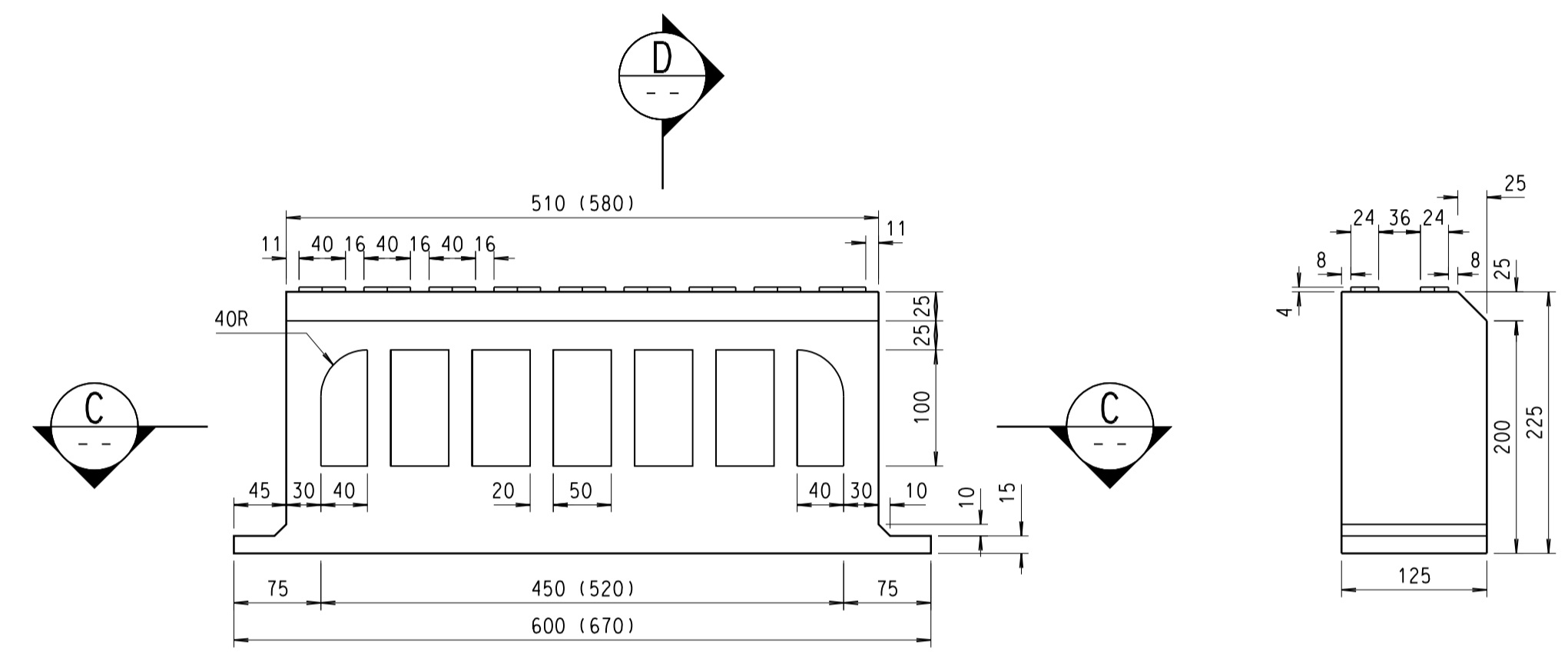


PLAN OF GULLY ON HIGHWAY STRUCTURES
SCALE 1:5
(GULLY GRATING AND OVERFLOW WEIR NOT SHOWN FOR CLARITY)

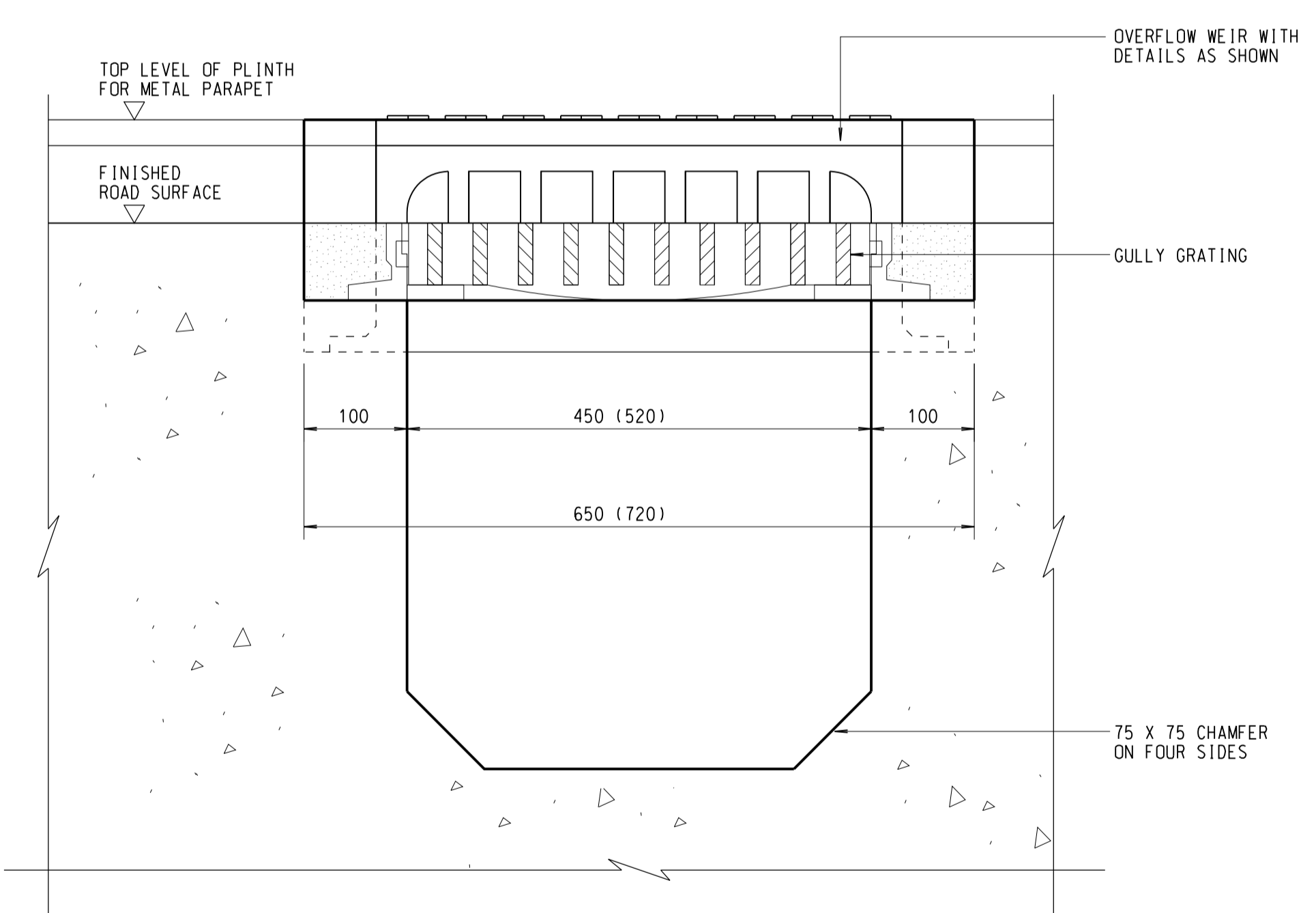


PLAN OF OVERFLOW WEIR
SCALE 1:5

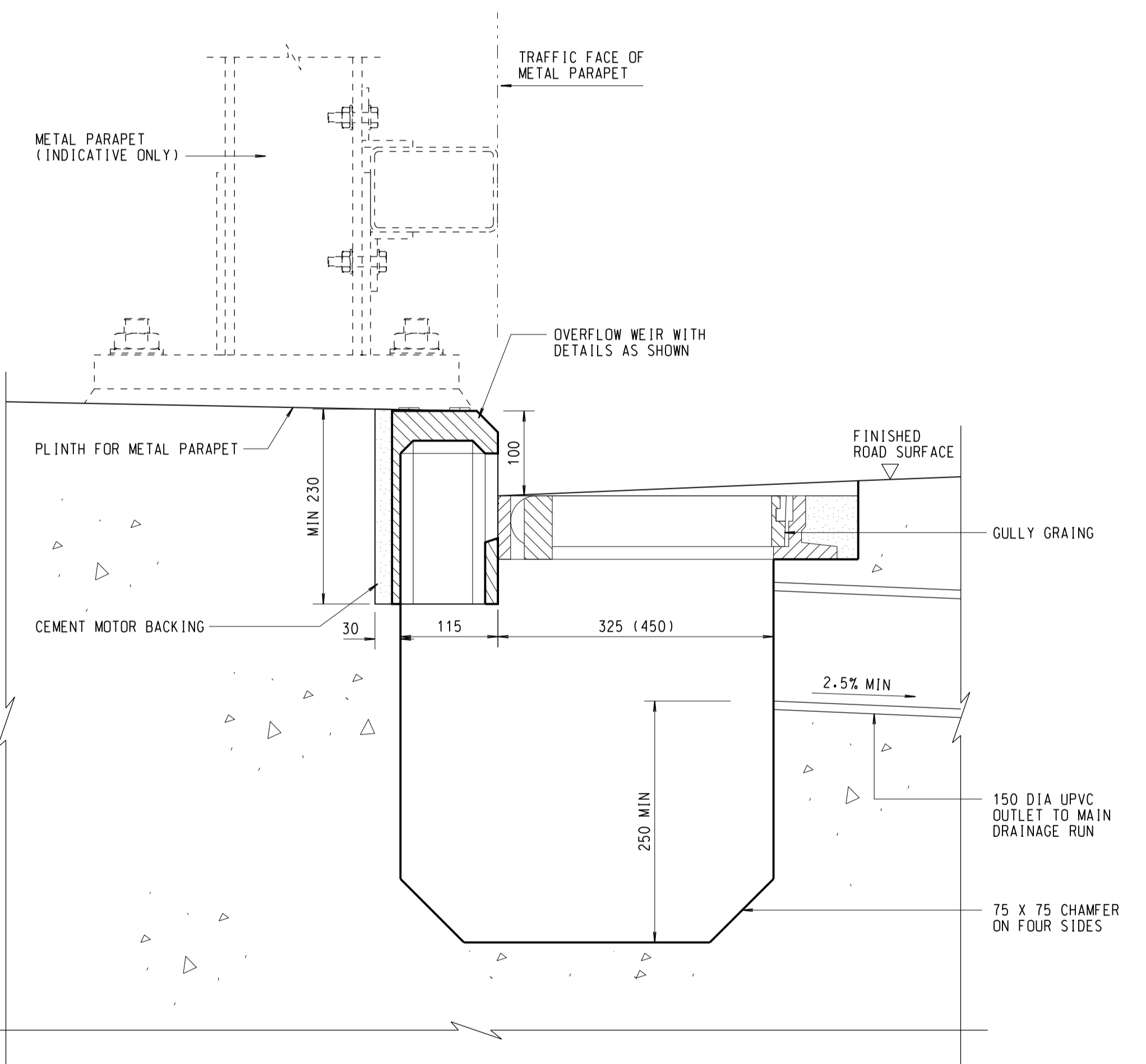


FRONT ELEVATION
SCALE 1:5
(Nos. OF SLOT TO BE ADJUSTED TO SUIT)

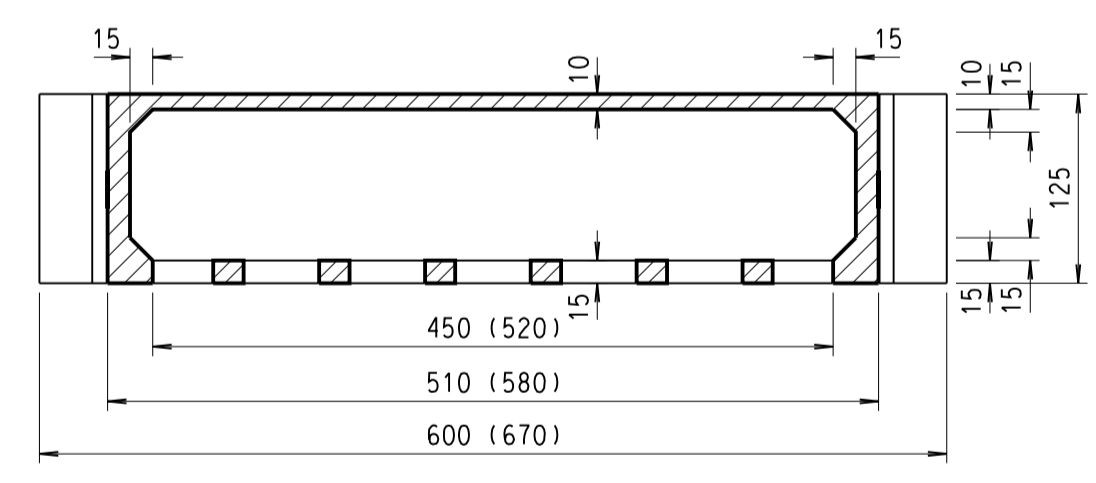
SIDE VIEW
SCALE 1:5



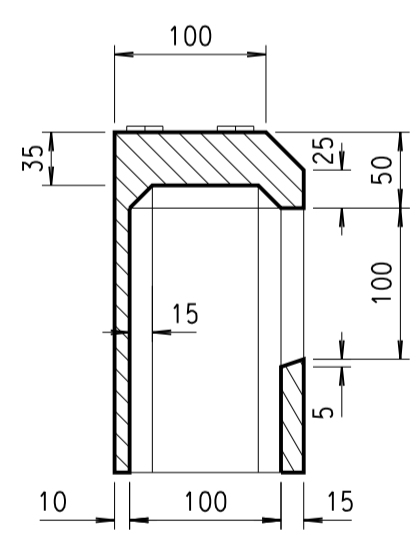
SECTION A
SCALE 1:5



SECTION B
SCALE 1:5



SECTION C
SCALE 1:5



SECTION D
SCALE 1:5

- NOTES:
- ALL DIMENSIONS ARE IN MILLIMETRES.
 - DIMENSIONS IN BRACKETS ARE FOR CASES WHERE G41-450 GULLY GRATINGS ARE USED; G42-325 GULLY GRATINGS ARE USED OTHERWISE.
 - FOR DETAILS OF GULLY GRATING, REFER TO HIGHWAYS DEPARTMENT STANDARD DRAWINGS.
 - KERB OVERFLOW WEIR SHALL BE CAST IRON CONFORMING TO GRADE EN-GUL-150 TO BE EN 1561.
 - ALL CORNERS ARE TO BE ROUNDED TO APPROXIMATELY 2mm RADIUS.
 - FOR GULLY INSTALLATION AND DETAILS OF KERB OVERFLOW WEIR FOR HIGHWAY STRUCTURE WITH CONCRETE PARAPET OR COMBINED STEEL AND CONCRETE PARAPET, REFER TO HIGHWAYS DEPARTMENT STANDARD DRAWING NO. H3111 TO H3113 AND H3121 TO H3128.

no.	date	description	initial
REVISION			
designed	C. P. WONG	SIGNED	01/16
drawn	W. K. WOO	SIGNED	01/16
senior technical officer	Y. W. YEUNG	SIGNED	07/16
project engineer	C. P. WONG	SIGNED	07/16
senior engineer	P. T. LEUNG	SIGNED	07/16
approved	SIGNED W. P. LEE Chief Highway Engineer		15/07/2016 date

contract no.

file no.

project no.

contract

drawing title

TYPICAL GULLY INSTALLATION AND DETAILS OF KERB OVERFLOW WEIR FOR HIGHWAY STRUCTURES WITH METAL PARAPET

drawing no. **SSD168**

scale **AS SHOWN**

office **BRIDGES AND STRUCTURES DIVISION**

結構橋樑部及

HIGHWAYS DEPARTMENT HONG KONG

路政署 香港

