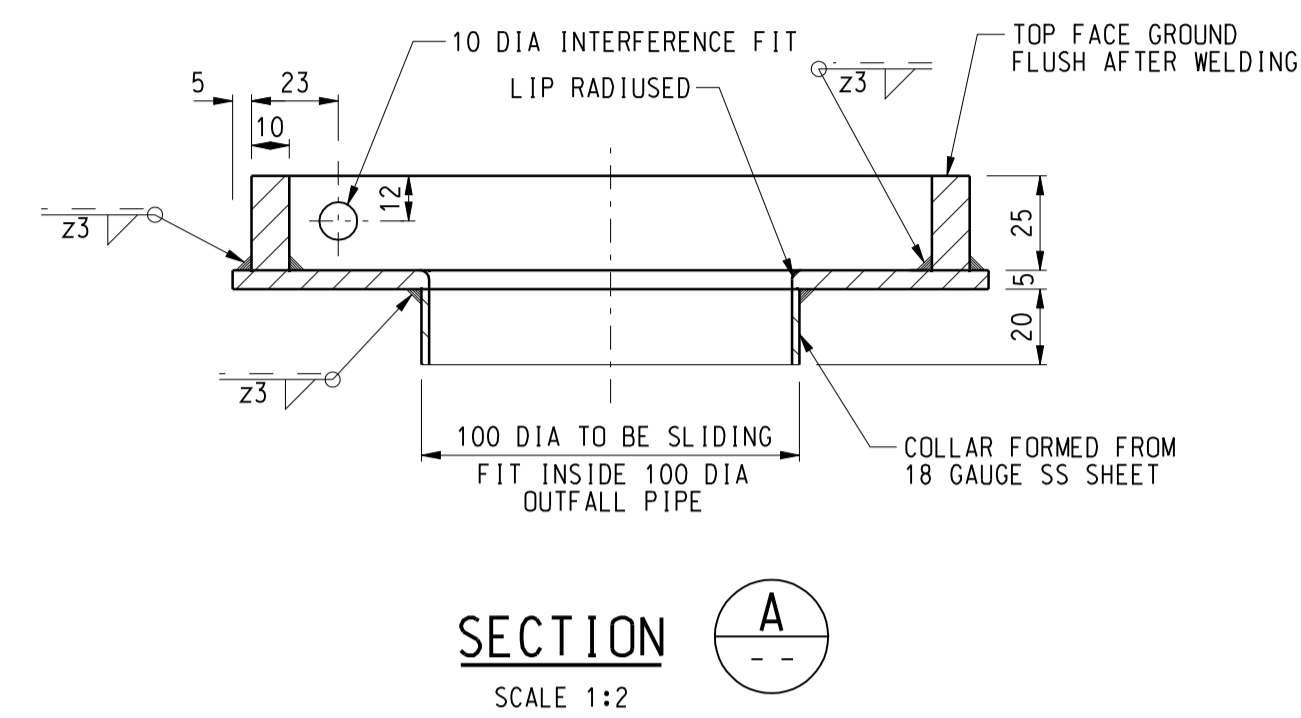
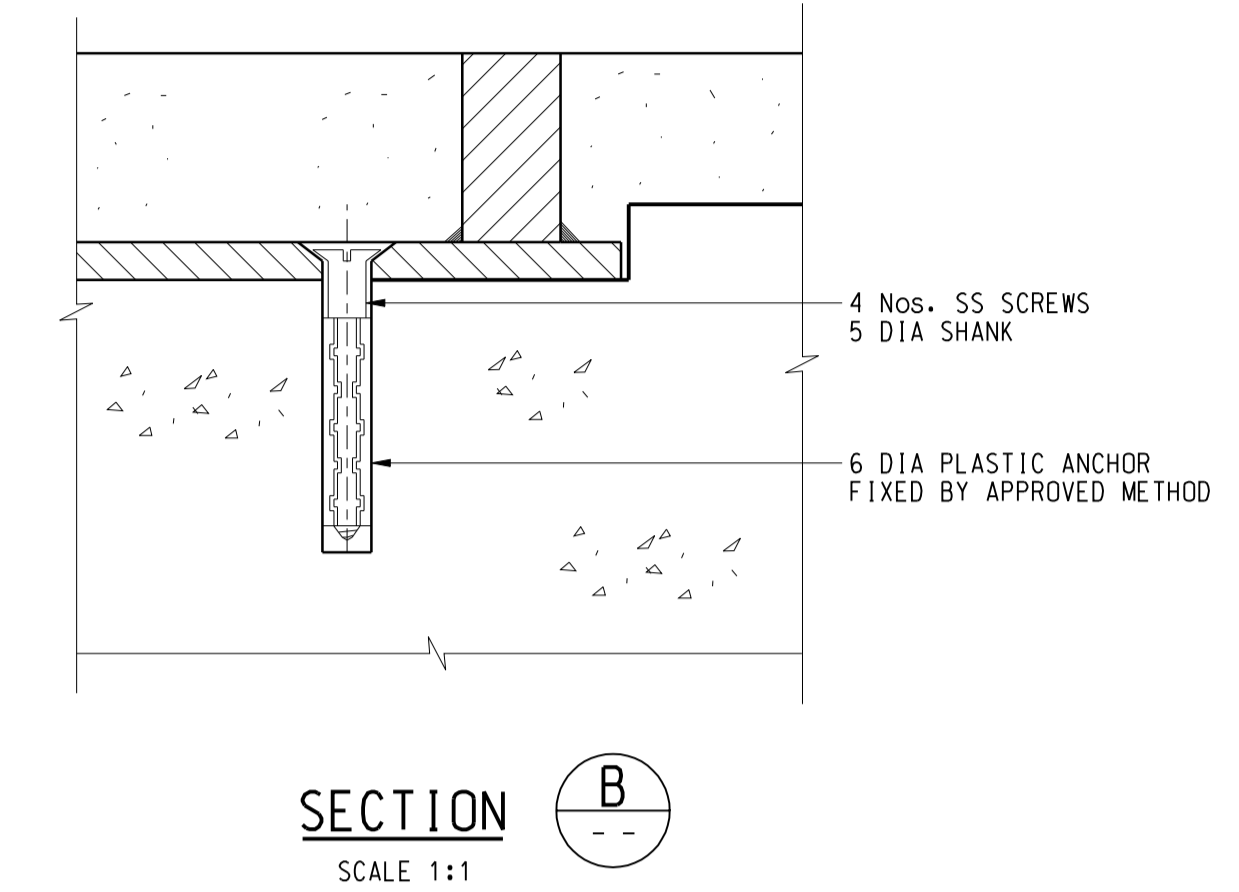


PLAN OF DECK GRATING FRAME

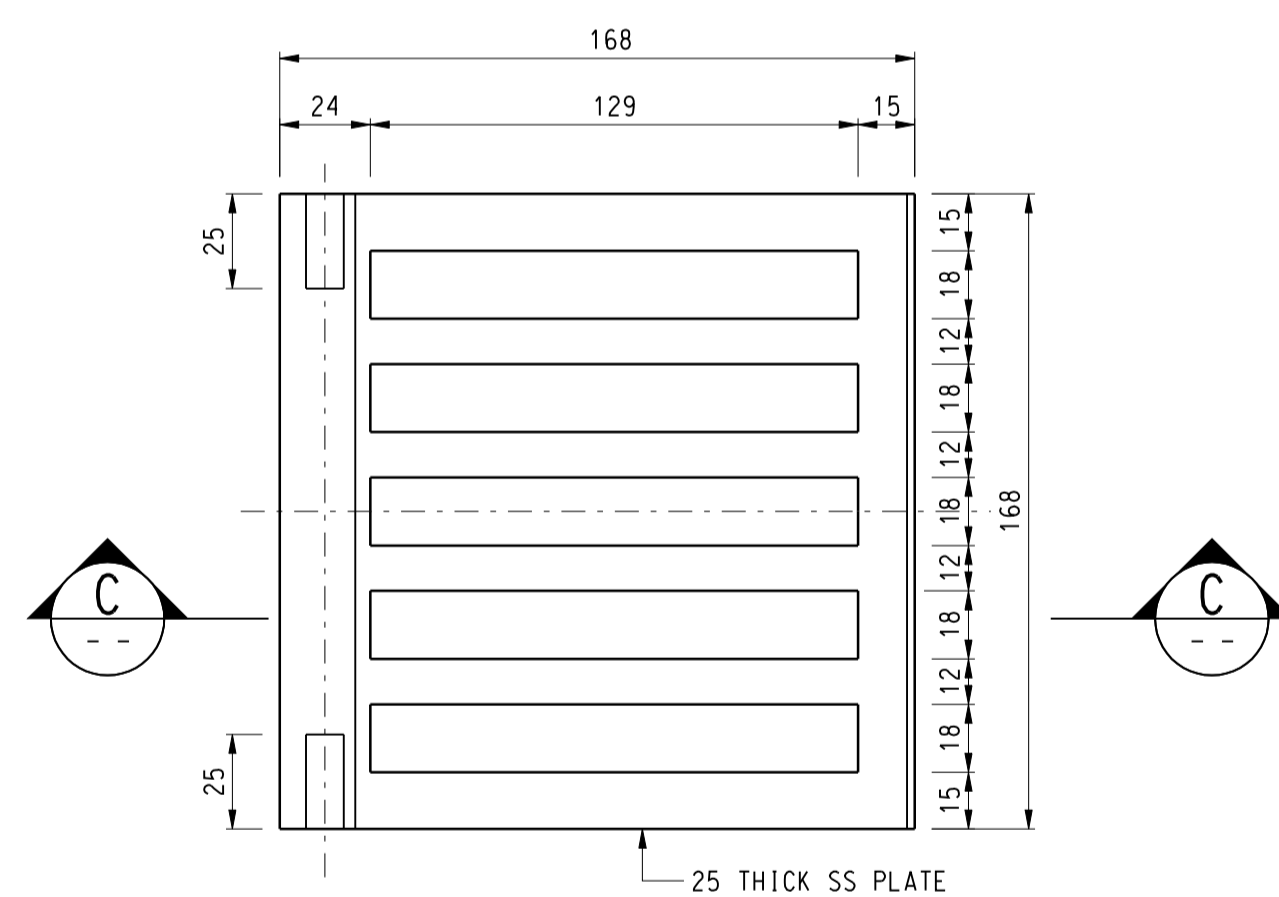
(NOTE : FRAMES TO BE FIXED IN POSITION TO CORRECT LEVEL AND GRADIENT BEFORE LOCATING COVERS WITH HINGE PINS)
SCALE 1:2



SECTION A
SCALE 1:2

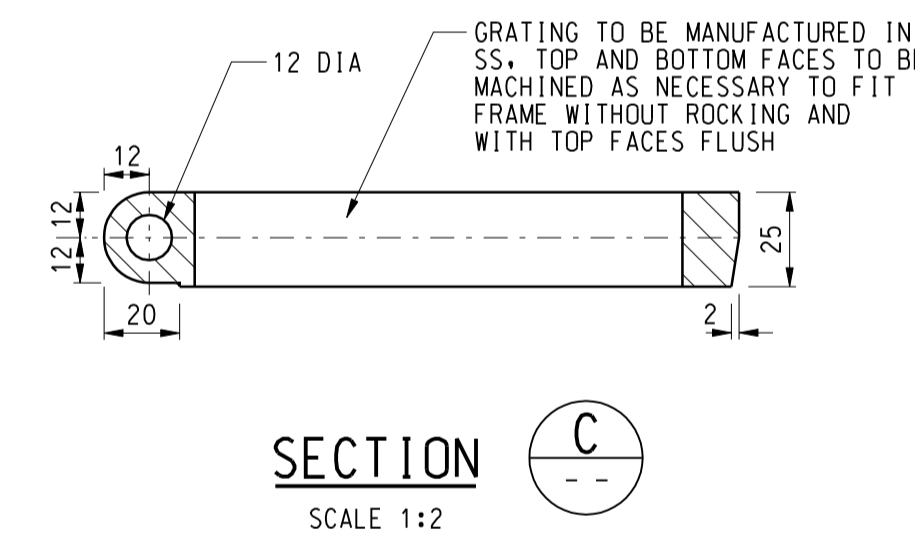


SECTION B
SCALE 1:1

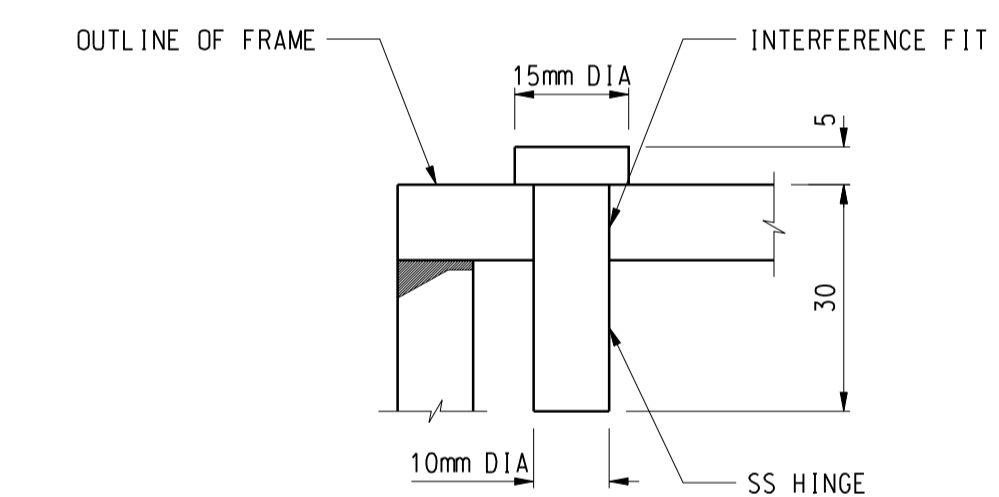


PLAN OF SS DECK GRATING COVER

SCALE 1:2



SECTION C
SCALE 1:2



DETAIL OF SS HINGE PIN
SCALE 1:1

NOTES:

- ALL DIMENSIONS ARE IN MILLIMETRES.
- STAINLESS STEEL SHALL BE GRADE 1.4401 TO BS EN 10088 UNLESS OTHERWISE SPECIFIED.
- COUNTERSUNK SCREW SHALL BE GRADE A4-80 TO BS EN ISO 3506 PARTS 1 & 2.
- WELDING SYMBOLS ARE IN ACCORDANCE WITH SYSTEM A OF BS EN 22553.
- DETAILS SHOWN ARE FOR DRAINAGE OUTLETS AT EDGE OF FOOTBRIDGE DECKS.

ABBREVIATIONS:

- SS STAINLESS STEEL
DIA DIAMETER
Nos. NUMBERS

no.	date	description	initial
REVISION			
designed	C. P. WONG	SIGNED	01/16
drawn	W. K. WOO	SIGNED	01/16
senior technical officer	Y. W. YEUNG	SIGNED	07/16
project engineer	C. P. WONG	SIGNED	07/16
senior engineer	P. T. LEUNG	SIGNED	07/16
approved	SIGNED W. P. LEE Chief Highway Engineer		15/07/2016 date

contract no.
file no.
project no.
contract

drawing title
HINGED GRATING FOR DRAINAGE OUTLET AT FOOTBRIDGE DECK

drawing no. **SSD167** scale **AS SHOWN**

office **BRIDGES AND STRUCTURES DIVISION** 結構標及

HONG KONG HIGHWAYS DEPARTMENT 路政署

