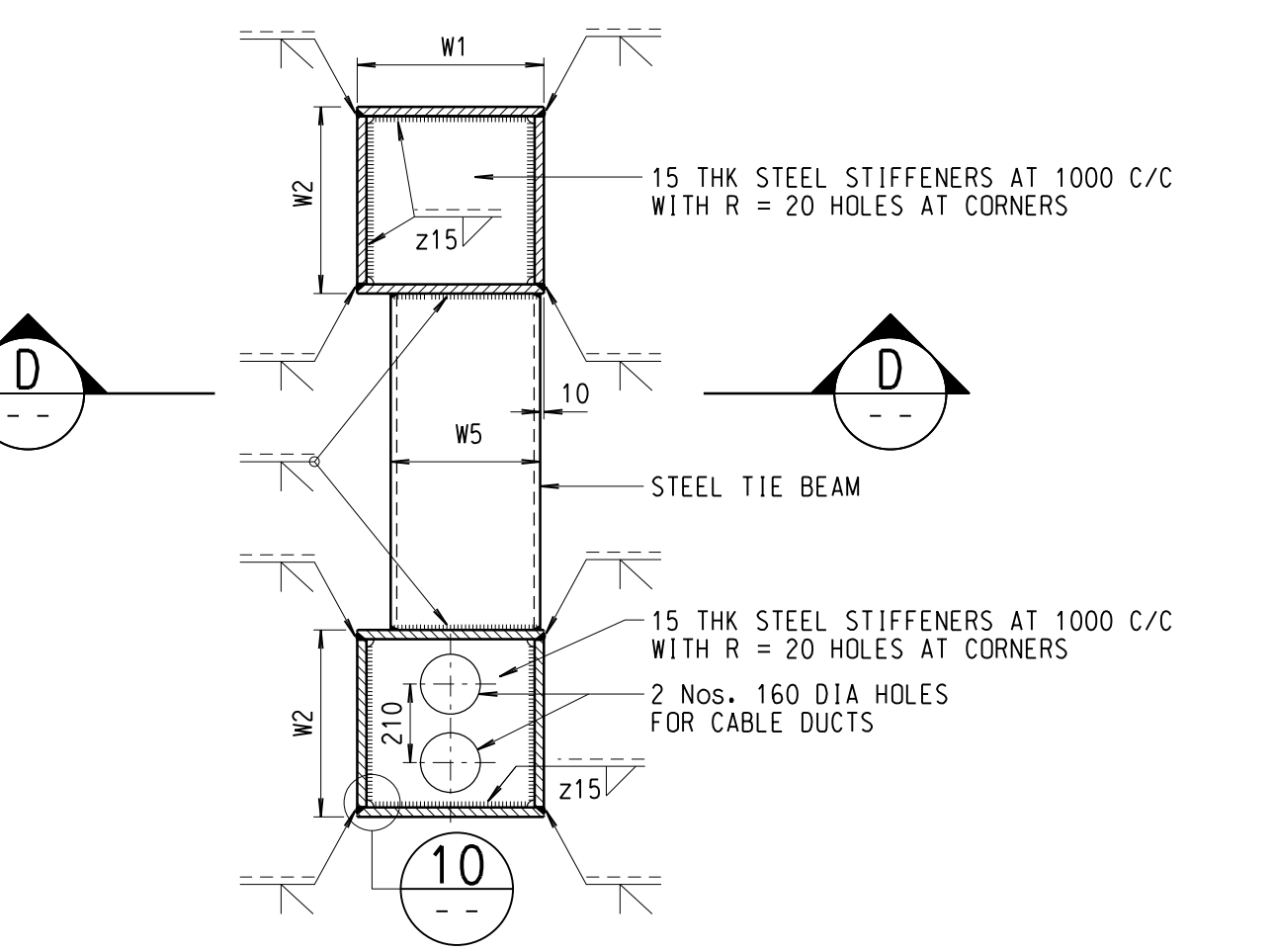


ELEVATION A
SCALE 1:50
(CAT LADDER AND RAILING NOT SHOWN FOR CLARITY)



SECTION C
SCALE 1:20
(CAT LADDER NOT SHOWN FOR CLARITY)

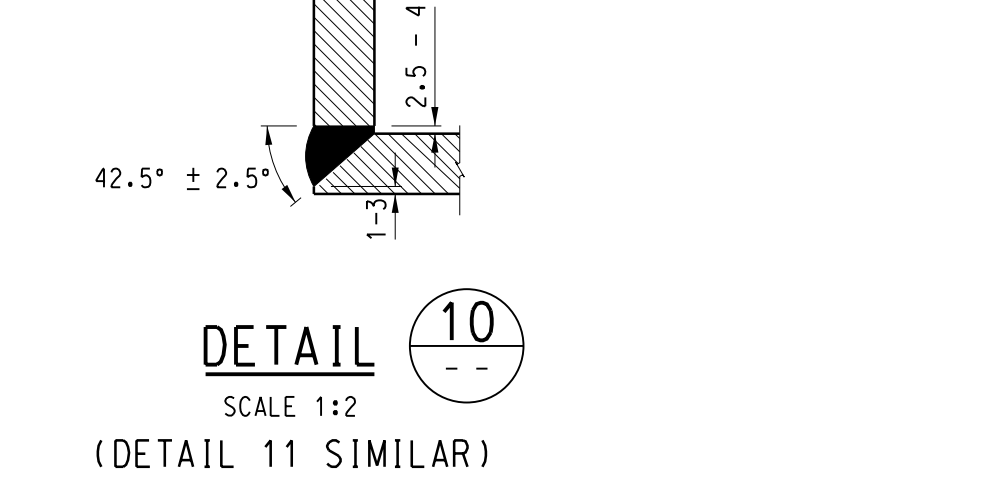
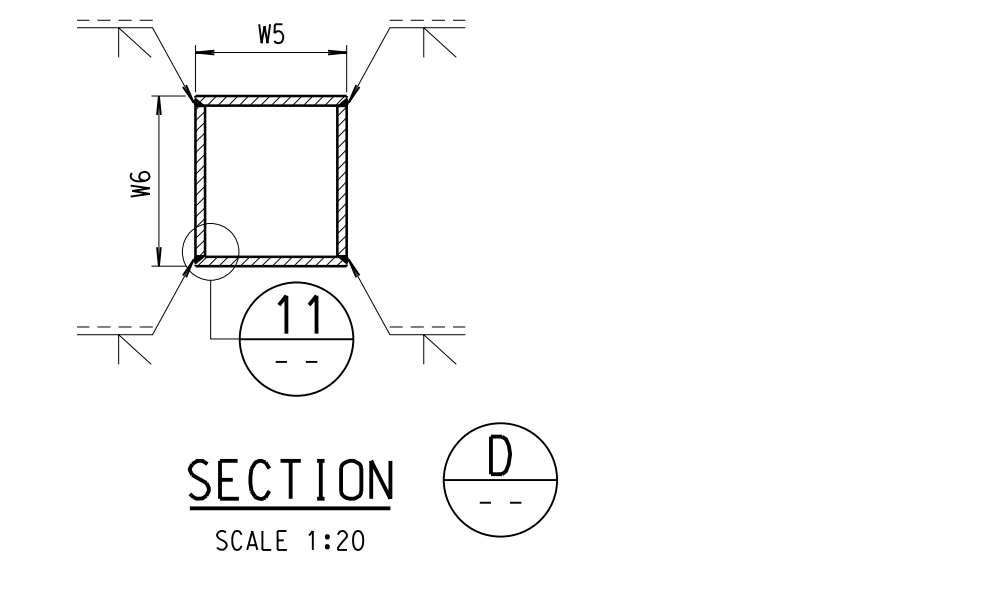
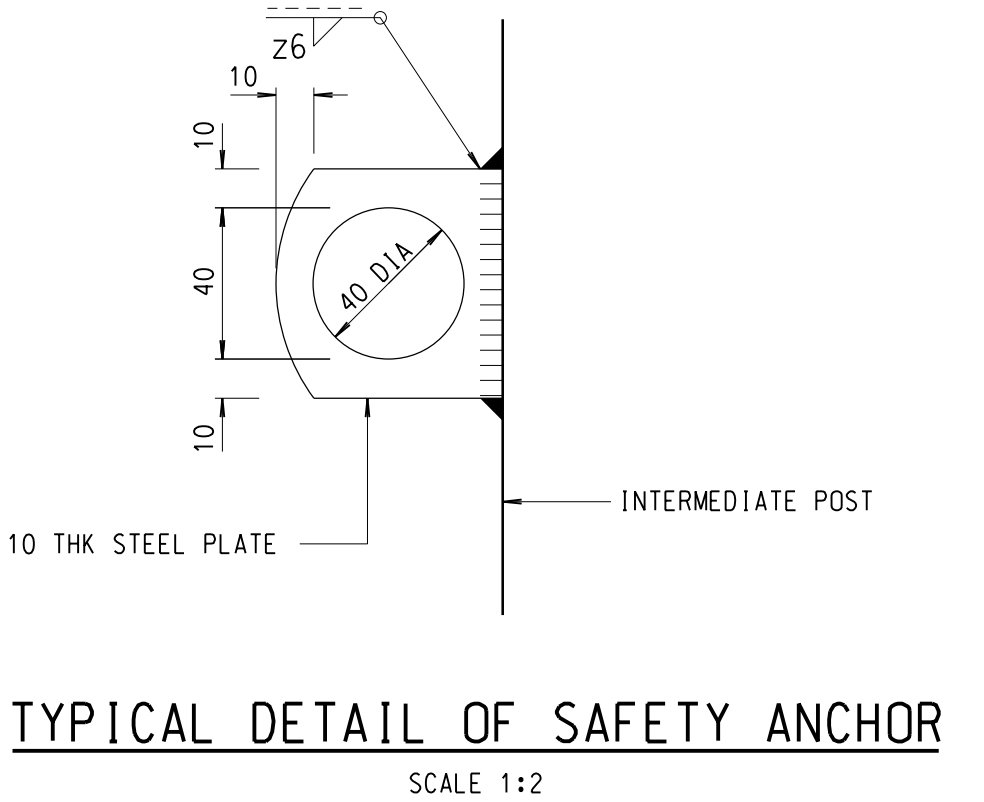
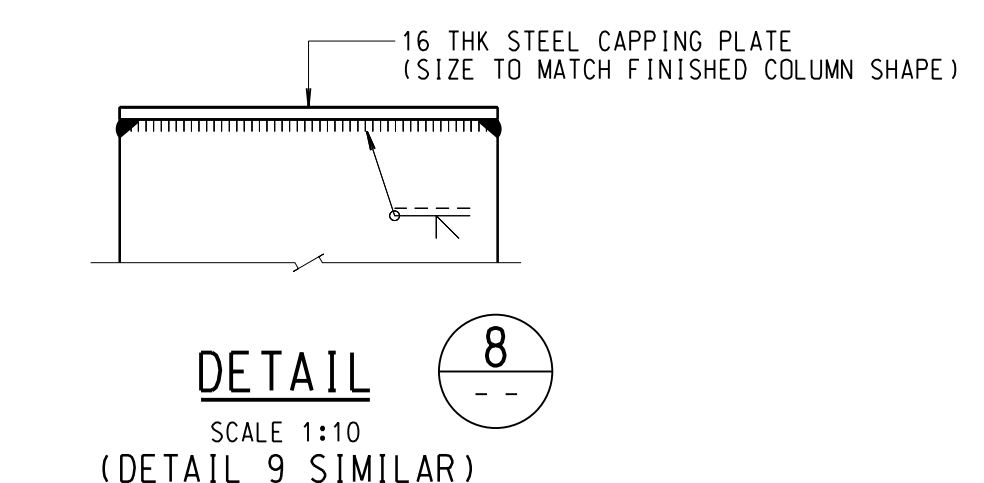


TABLE 1 - GANTRY FRAME SCHEDULE

GANTRY SPAN (S) (mm)	COLUMN (W1 x W2 x THK)	CHORD (ALL KINDS) (W3 x W4 x THK)	TIE BEAM (W5 x W6 x THK)	INTERMEDIATE POST
S ≤ 13000	400 x 500 x 25	300 x 200 x 16 RHS	250 x 450 x 16 RHS	200 x 200 x 16 SHS
13000 < S ≤ 17000	400 x 500 x 25	450 x 250 x 16 RHS	300 x 450 x 16	200 x 200 x 16 SHS
17000 < S ≤ 22000	500 x 500 x 25	500 x 300 x 16 RHS	400 x 450 x 16	250 x 250 x 16 SHS

NOTES:
1. FOR GENERAL NOTES AND ABBREVIATIONS, SEE HIGHWAYS DEPARTMENT STRUCTURES STANDARD DRAWING NO. SSD156(11).
2. THE DIRECTIONAL SIGN FACES SHALL BE PLACED IN POSITIONS SUCH THAT THE VERTICAL ARROW MARKS OF THE SIGNS SHALL PROJECT IN LINE WITH THE CENTRE LINES OF THE FINAL TRAFFIC LANES.
3. THE POSITION OF INTERMEDIATE POSTS CAN BE SHIFTED SIDEWAYS BY NOT MORE THAN 400mm TO FACILITATE THE MAINTENANCE OF FVMS. IN THIS CASE, THE CONTRACTOR SHALL SUBMIT THE PROPOSED ARRANGEMENT OF INTERMEDIATE POSTS TO THE ENGINEER FOR APPROVAL.
4. THE LANTERNS SHOWN ARE INDICATIVE ONLY. FOR DETAILS OF LANTERNS, SEE HIGHWAYS DEPARTMENT STRUCTURES STANDARD DRAWING NO. SSD151(41).

B	11/16	GENERAL REVISION: GANTRY FRAME MEMBER SIZE REVISED	SIGNED C.P. WONG, E/P2-3 SIGNED P.T. LEUNG, SE/P2
A	09/14	GENERAL REVISION OF DRAWING NOTES	SIGNED P.H. CHUNG, E/P2-1 SIGNED P.T. LEUNG, SE/P2

no.	date	description	initial
REVISION			
designed	K. S. LAM	SIGNED	04/11
drawn	W. K. WOO	SIGNED	04/11
senior technical officer	Y. W. CHIN	SIGNED	08/11
project engineer	K. S. LAM	SIGNED	08/11
senior engineer	P. T. LEUNG	SIGNED	08/11
approved		SIGNED P. K. LEE Chief Highway Engineer	05/08/2011 date

contract no.	
file no.	STR 5/40/18
project no.	
contract	
drawing title	
TRAFFIC CONTROL AND SURVEILLANCE SYSTEM SIGN GANTRY TYPE E FOR FULLY VARIABLE MESSAGE SIGN WITH FIXED DIRECTIONAL SIGN (SHEET 1 OF 4)	
drawing no.	SSD160(1)-B
scale	AS SHOWN
office	BRIDGES AND STRUCTURES DIVISION
	結 構 部 及 橋 樑 部
	HONG KONG

HIGHWAYS DEPARTMENT
HONG KONG

路 港
政 署