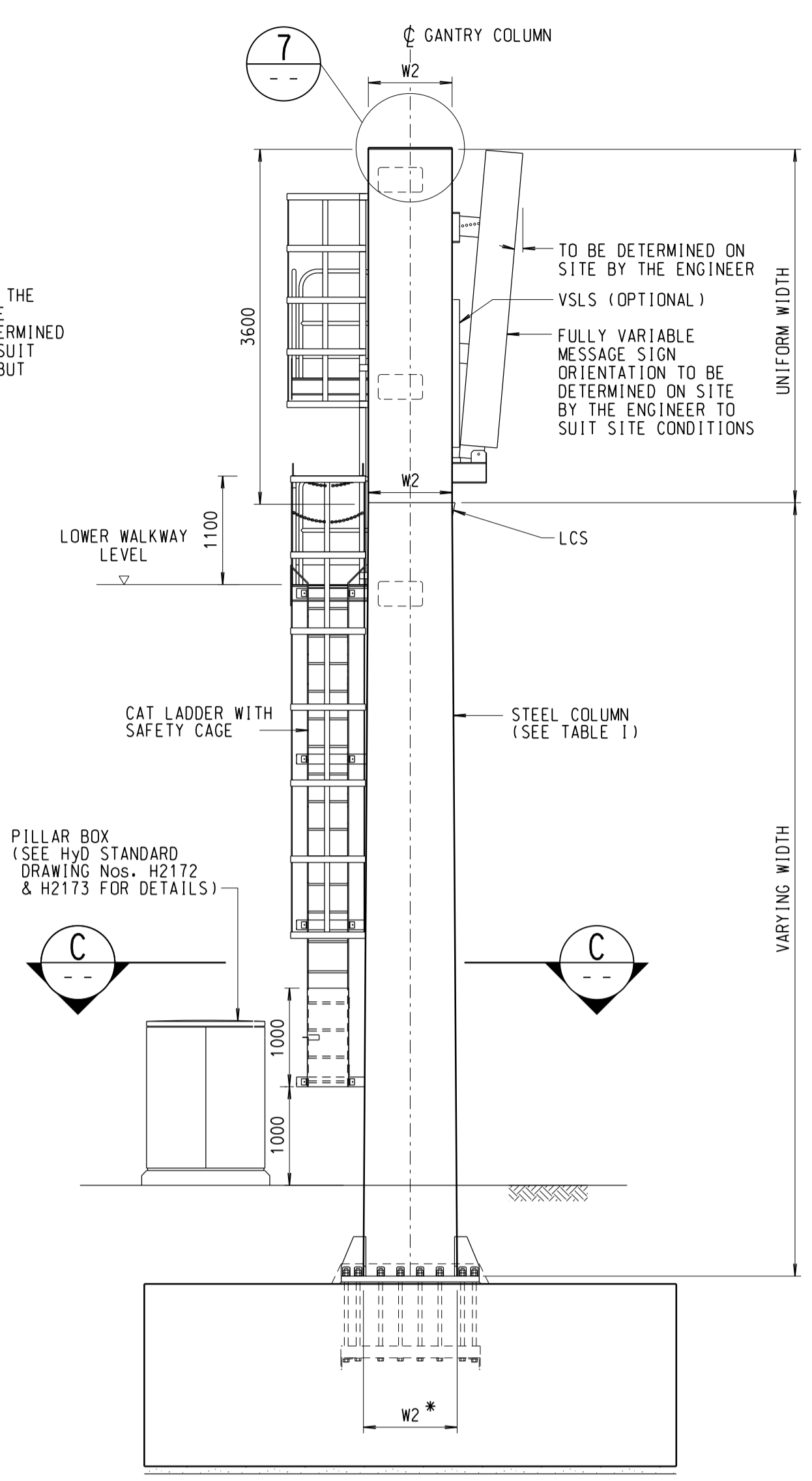
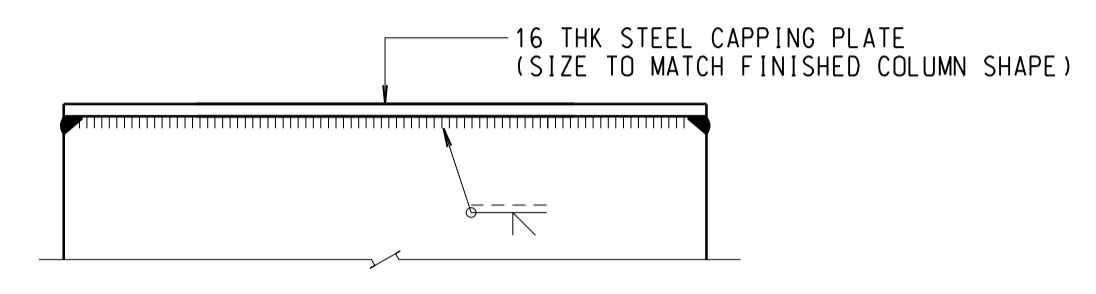


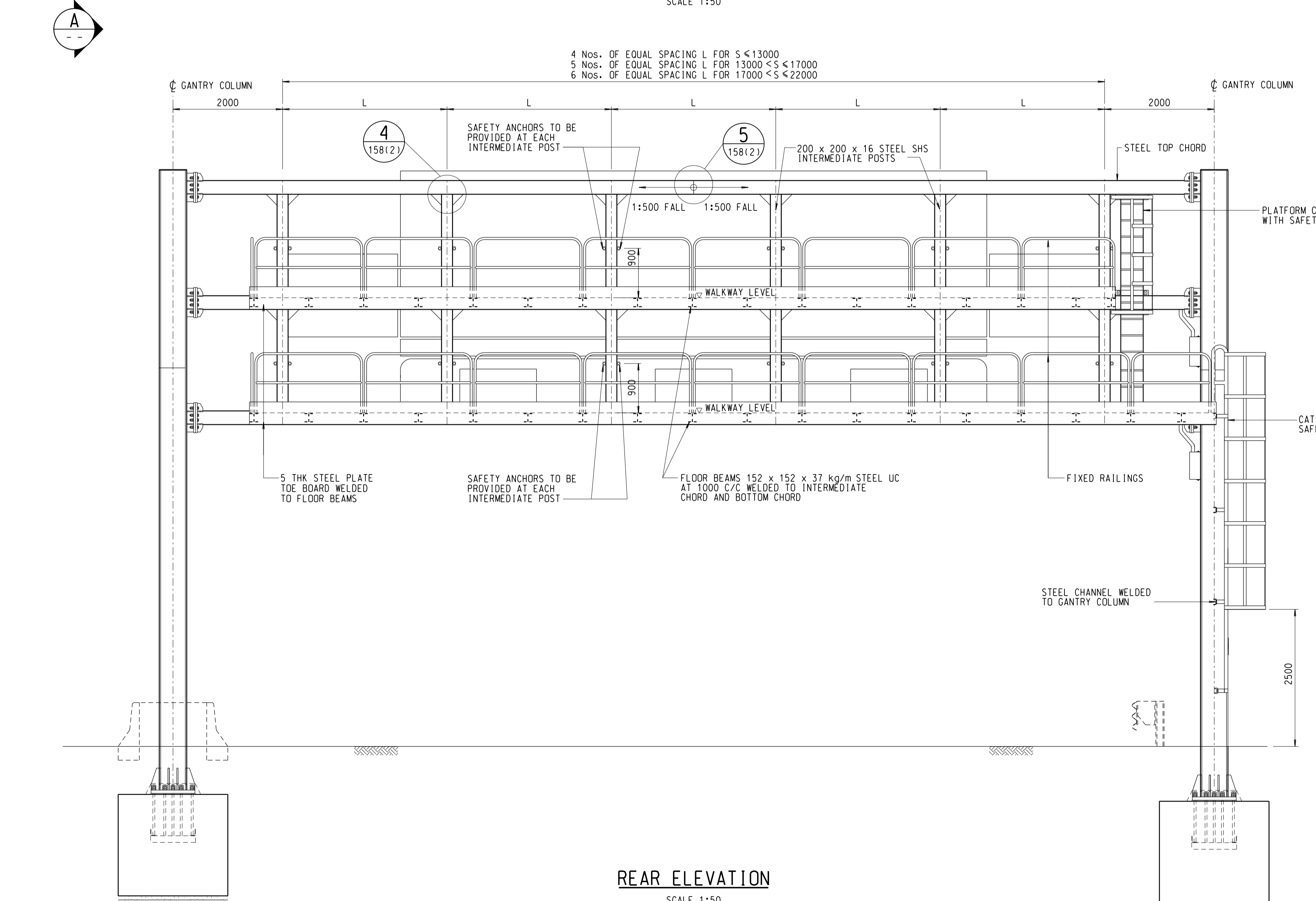
**FRONT ELEVATION**  
SCALE 1:50



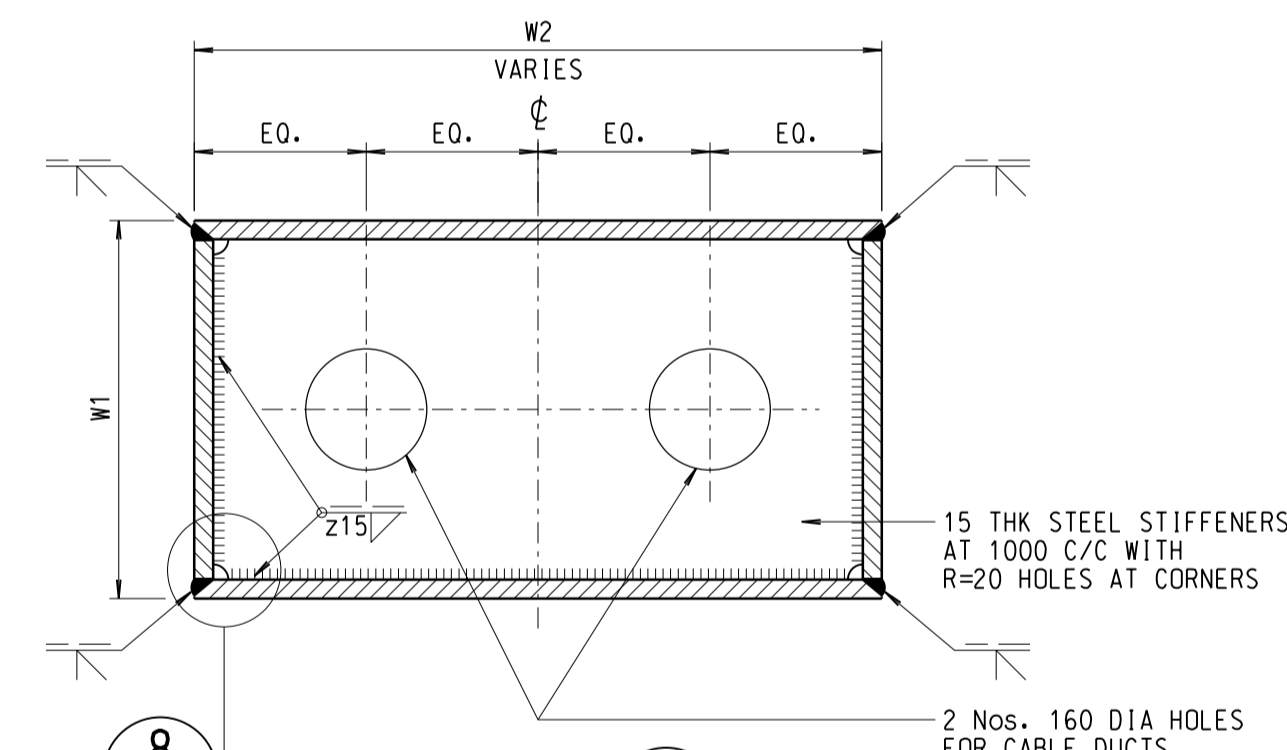
**ELEVATION A**  
SCALE 1:50



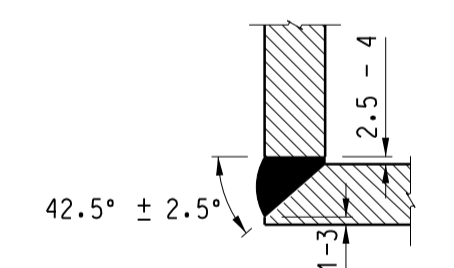
**DETAIL 7**  
SCALE 1:10



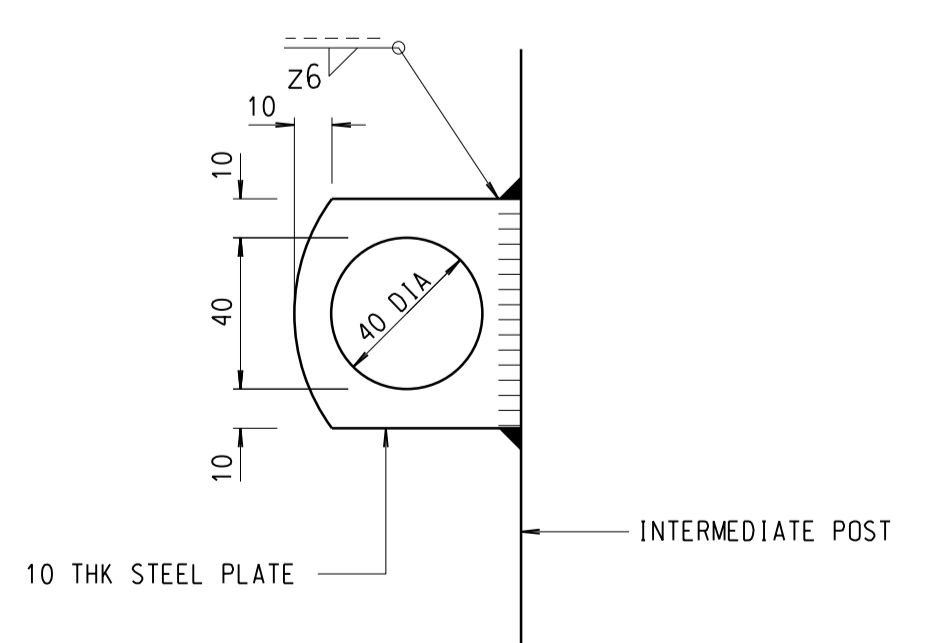
**REAR ELEVATION**  
SCALE 1:50



**SECTION C**  
SCALE 1:10  
(CAT LADDER NOT SHOWN FOR CLARITY)



**DETAIL 8**  
SCALE 1:2



**TYPICAL DETAIL OF SAFETY ANCHOR**  
SCALE 1:2

**TABLE 1 - GANTRY FRAME SCHEDULE**

GANTRY SPAN (S) (mm)	COLUMN		CHORD (ALL KINDS) (W3 x W4 x THK)
	TOP (W1 x W2 x THK)	BOTTOM (W1 x W2 x THK)	
S ≤ 13000	500 x 650 x 25	500 x 750 x 25	400 x 200 x 16 RHS
13000 < S ≤ 17000	500 x 750 x 25	500 x 850 x 25	450 x 250 x 16 RHS
17000 < S ≤ 22000	500 x 850 x 30	500 x 950 x 30	450 x 250 x 16 RHS

**NOTES:**

- FOR GENERAL NOTES AND ABBREVIATIONS, SEE HIGHWAYS DEPARTMENT STRUCTURES STANDARD DRAWING No. SSD156(1).
- THE POSITION OF INTERMEDIATE POSTS CAN BE SHIFTED SIDWAYS BY NOT MORE THAN 400mm TO FACILITATE THE MAINTENANCE OF FVMS. IN THIS CASE, THE CONTRACTOR SHALL SUBMIT THE PROPOSED ARRANGEMENT OF INTERMEDIATE POSTS TO THE ENGINEER FOR APPROVAL.

no.	date	description	initial
B	11/16	GENERAL REVISION: COLUMN SIZE REVISED	SIGNED C.P. WONG, E/P2-3 P.T. LEUNG, SE/P2
A	09/14	GENERAL REVISION OF DRAWING NOTES	SIGNED P.H. CHUNG, E/P2-1 P.T. LEUNG, SE/P2

REVISION			
designed	name	signature	date
	K. S. LAM	SIGNED	04/11
drawn	W. K. WOO	SIGNED	04/11
senior technical officer	Y. W. CHIN	SIGNED	08/11
project engineer	K. S. LAM	SIGNED	08/11
senior engineer	P. T. LEUNG	SIGNED	08/11

approved  
P. K. LEE  
Chief Highway Engineer  
05/08/2011  
date

contract no. STR 5/40/18  
project no.  
contract

drawing title  
TRAFFIC CONTROL AND SURVEILLANCE SYSTEM  
SIGN GANTRY TYPE C  
FOR FULLY VARIABLE MESSAGE SIGN WITH LANE CONTROL SIGNAL AND OPTIONAL VARIABLE SPEED LIMIT SIGN  
(SHEET 1 OF 4)

drawing no. SSD158(1)-B  
scale AS SHOWN

office  
BRIDGES AND STRUCTURES DIVISION  
HONG KONG  
結 橋  
構 樑  
部 及

HIGHWAYS DEPARTMENT  
HONG KONG  
路 香  
政 港  
署

B1 SIZE 1000 X 707mm