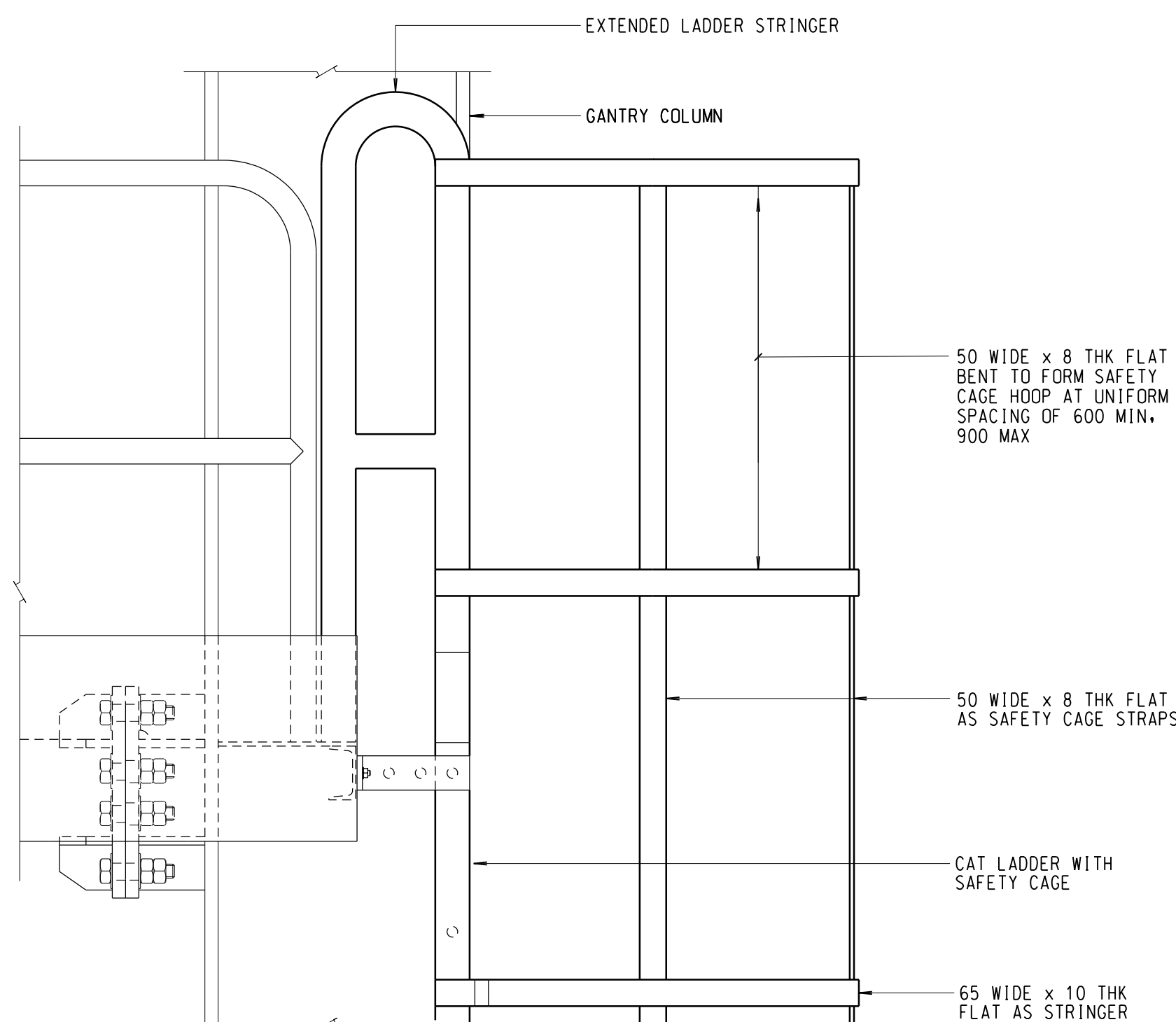
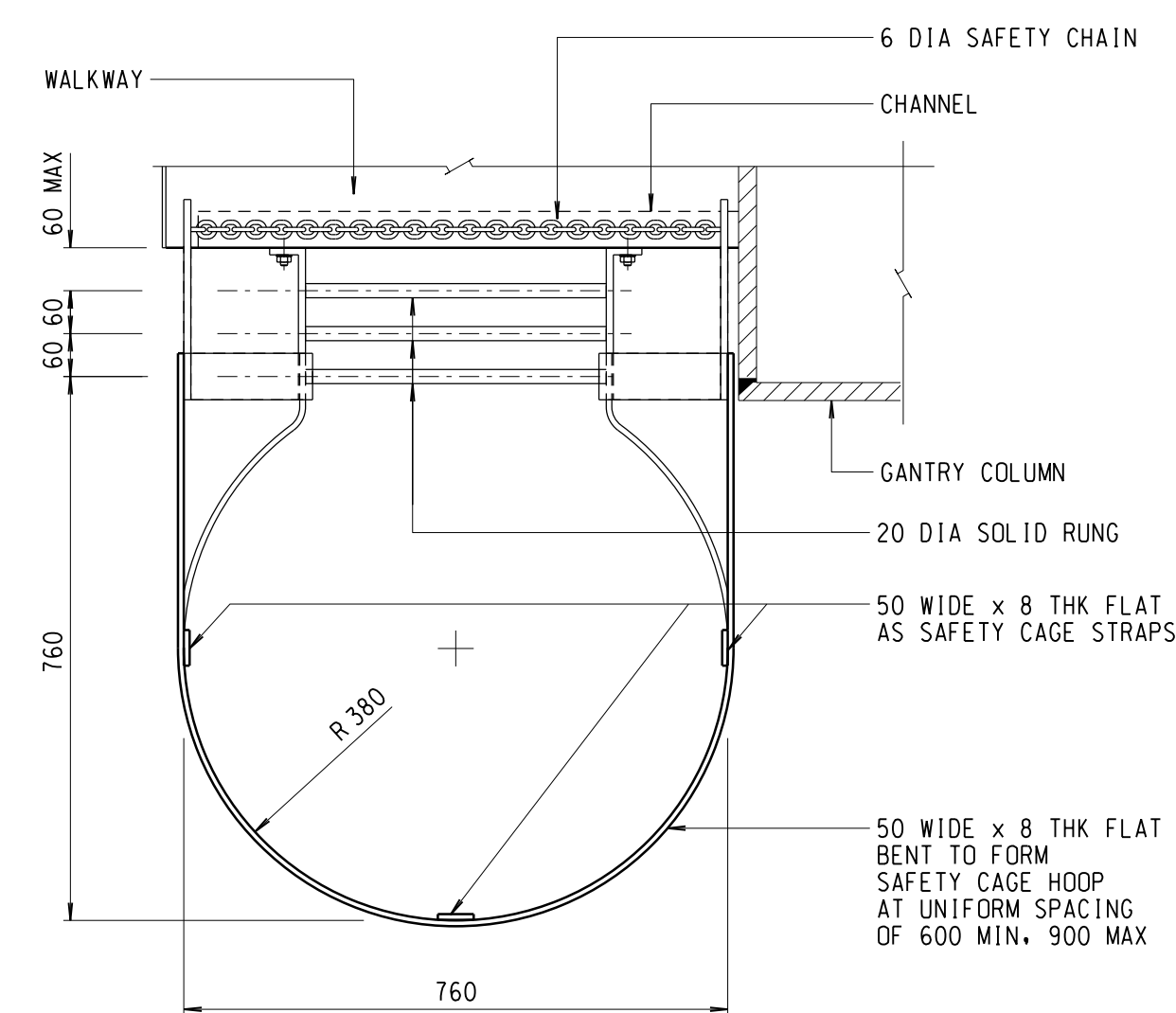


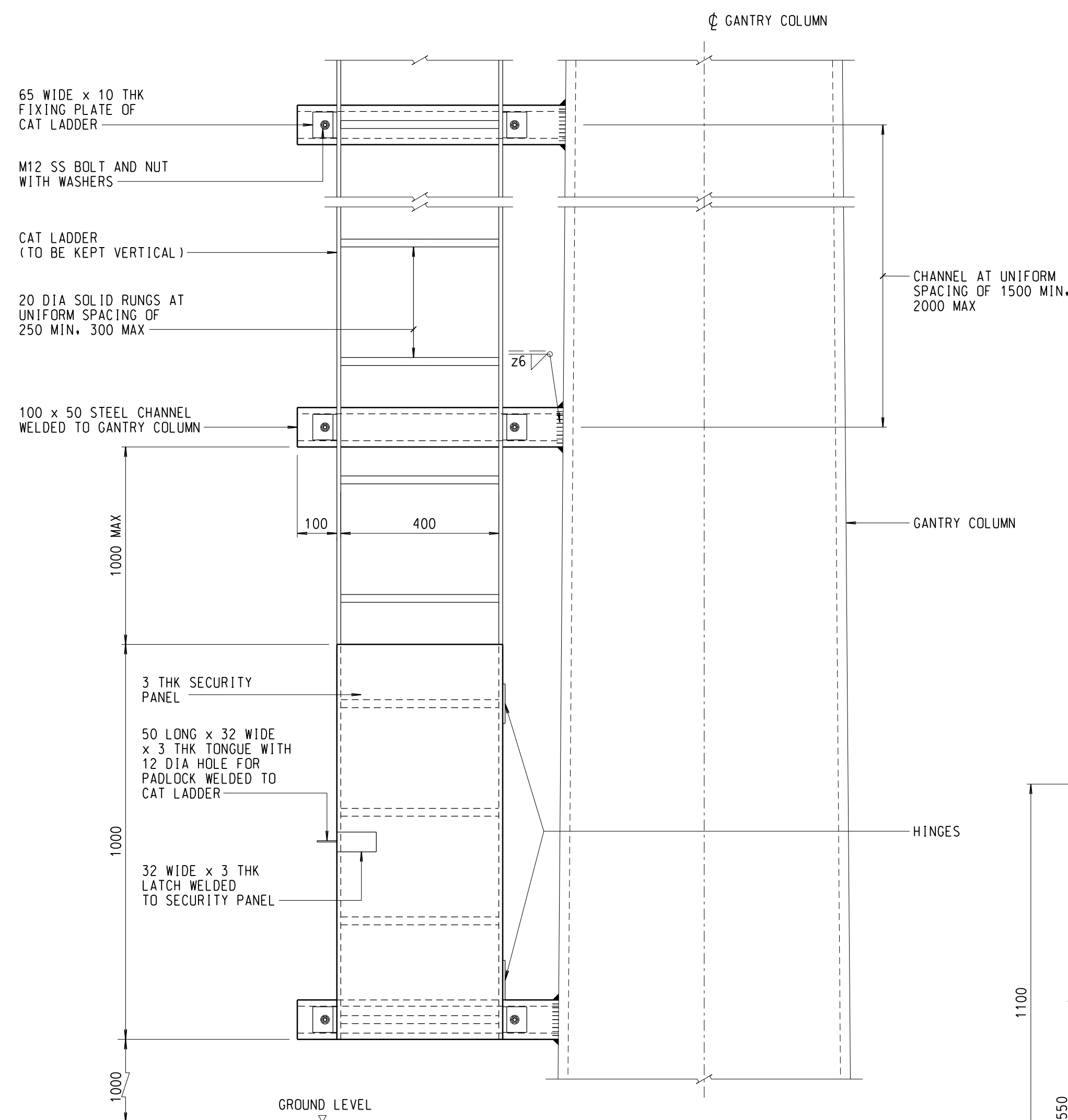
TOP END OF CAT LADDER WITH SAFETY CAGE
ELEVATION
SCALE 1:10



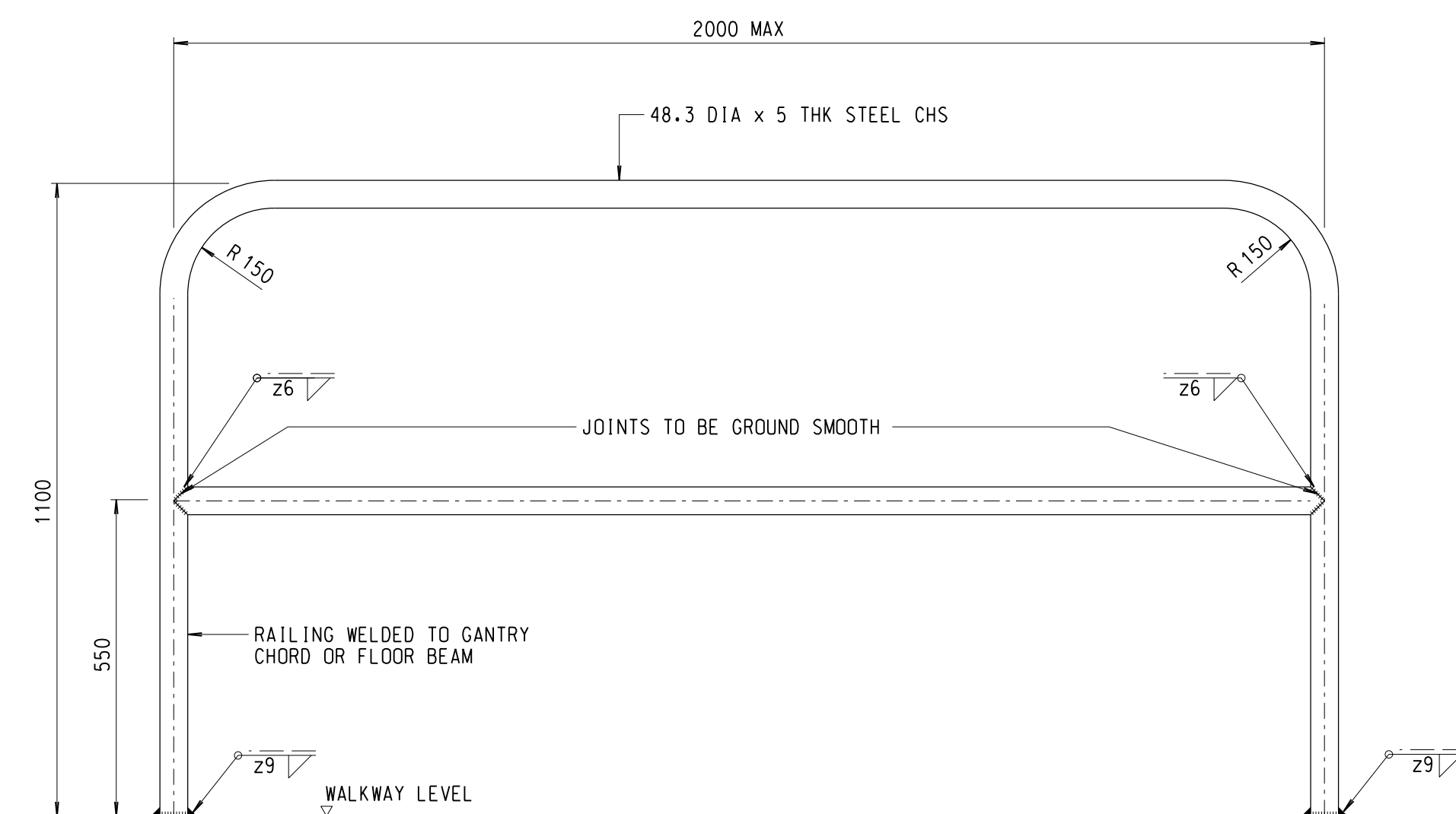
ELEVATION P
SCALE 1:10



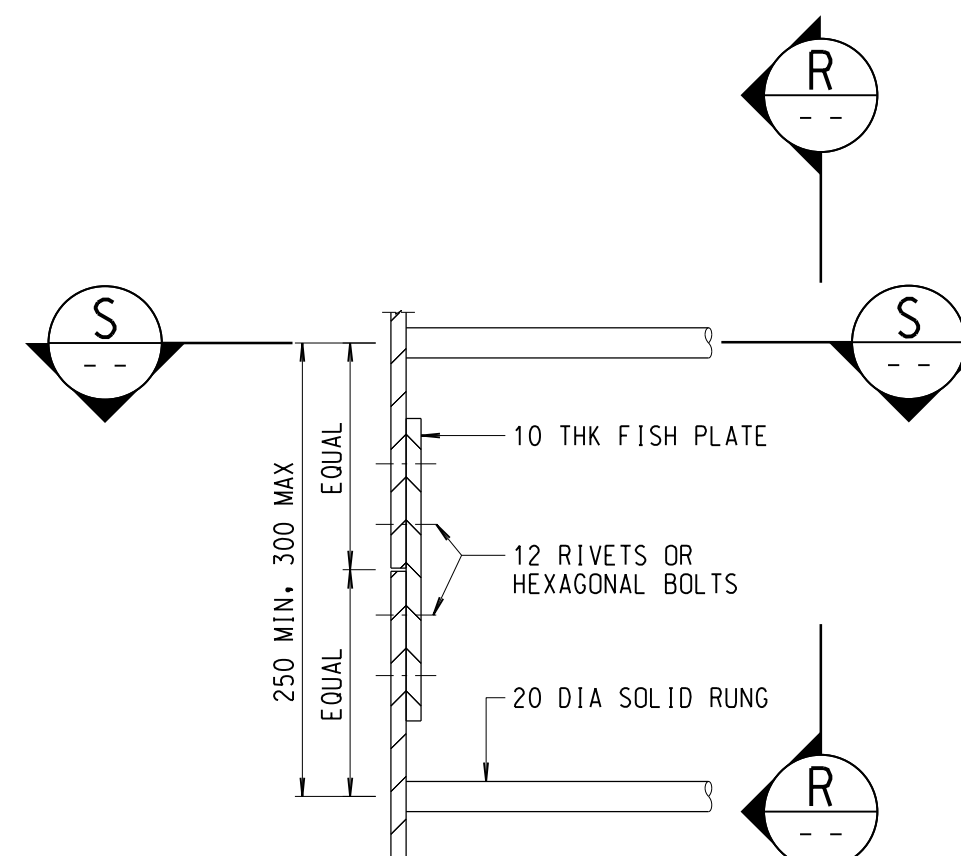
SECTION Q
SCALE 1:10
(RAILING NOT SHOWN FOR CLARITY)



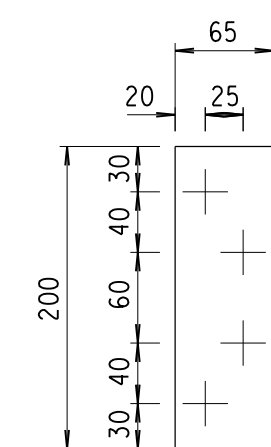
BOTTOM END OF CAT LADDER
ELEVATION
SCALE 1:10
(SAFETY CAGE NOT SHOWN FOR CLARITY)



TYPICAL RAILING DETAILS
SCALE 1:10

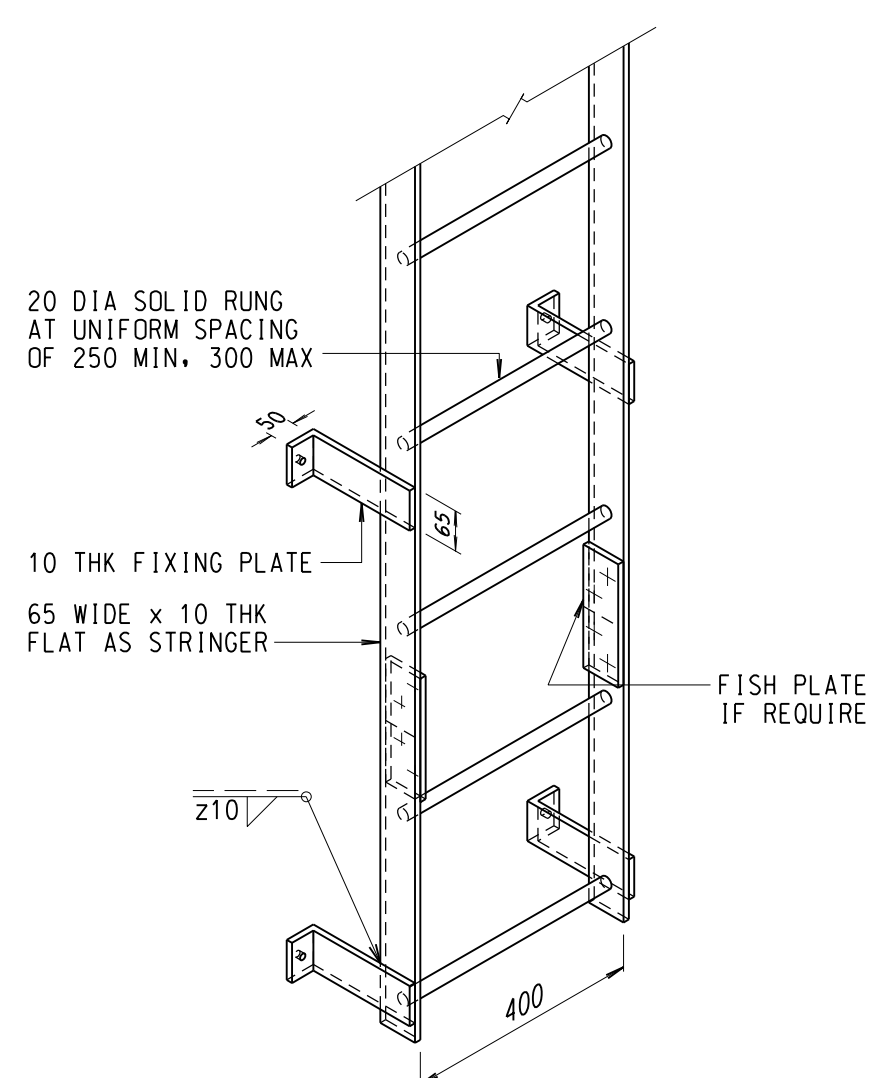


TYPICAL ELEVATION
SCALE 1:5

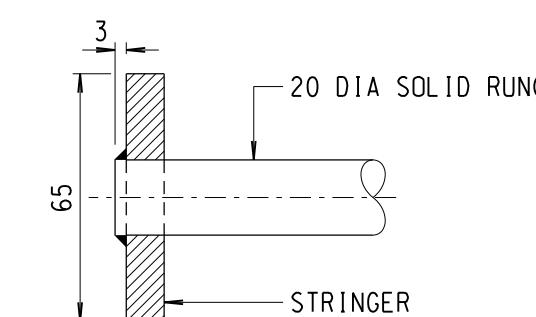


ELEVATION R
SCALE 1:5

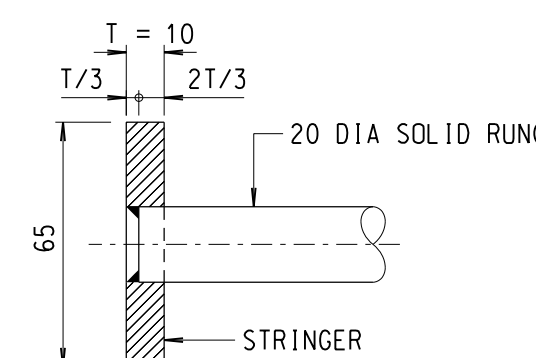
FISH PLATE CONNECTION DETAILS
OF CAT LADDER



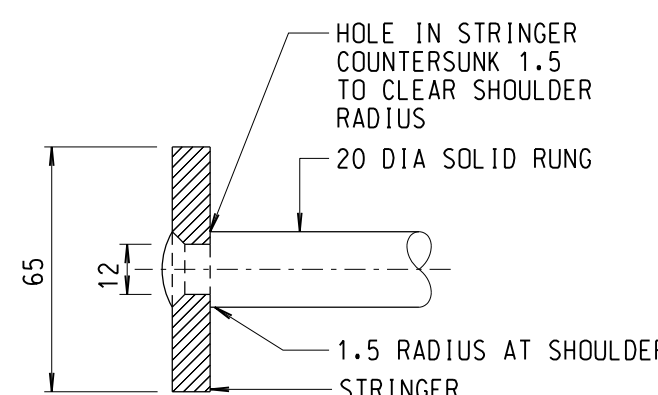
ISOMETRIC VIEW OF CAT LADDER
DIAGRAMMATIC



SECTION S
SCALE 1:2
(WELDED TYPE 1)



SECTION S
SCALE 1:2
(WELDED TYPE 2)



SECTION S
SCALE 1:2
(RIVETED)

(NOTE: SOLID RUNGS SHALL BE EITHER WELDED OR RIVETED TO STRINGERS ACCORDING TO EITHER ONE OF THE ABOVE DETAILS)

NOTES:

1. THIS DRAWING SHALL BE READ IN CONJUNCTION WITH DRAWING NO. SSD157(1).

A	11/16	GENERAL REVISION	SIGNED C.P. WONG, E/P2-3
			SIGNED P.T. LEUNG, SE/P2
no.	date	description	initial

REVISION			
	name	signature	date
designed	K. S. LAM	SIGNED	04/11
drawn	W. K. WOO	SIGNED	04/11
senior technical officer	Y. W. CHIN	SIGNED	08/11
project engineer	K. S. LAM	SIGNED	08/11
senior engineer	P. T. LEUNG	SIGNED	08/11

approved
P. K. LEE
Chief Highway Engineer
05/08/2011
date

contract no.

file no. STR 5/40/18

project no.

contract

drawing title
TRAFFIC CONTROL AND SURVEILLANCE
SYSTEM
SIGN GANTRY TYPE B
FOR FULLY VARIABLE
MESSAGE SIGN
(SHEET 4 OF 4)

drawing no. SSD157(4)-A
scale AS SHOWN

office
BRIDGES AND
STRUCTURES DIVISION
結 構
構 架
部 及

HIGHWAYS
DEPARTMENT
HONG KONG
路 香
政 港
署