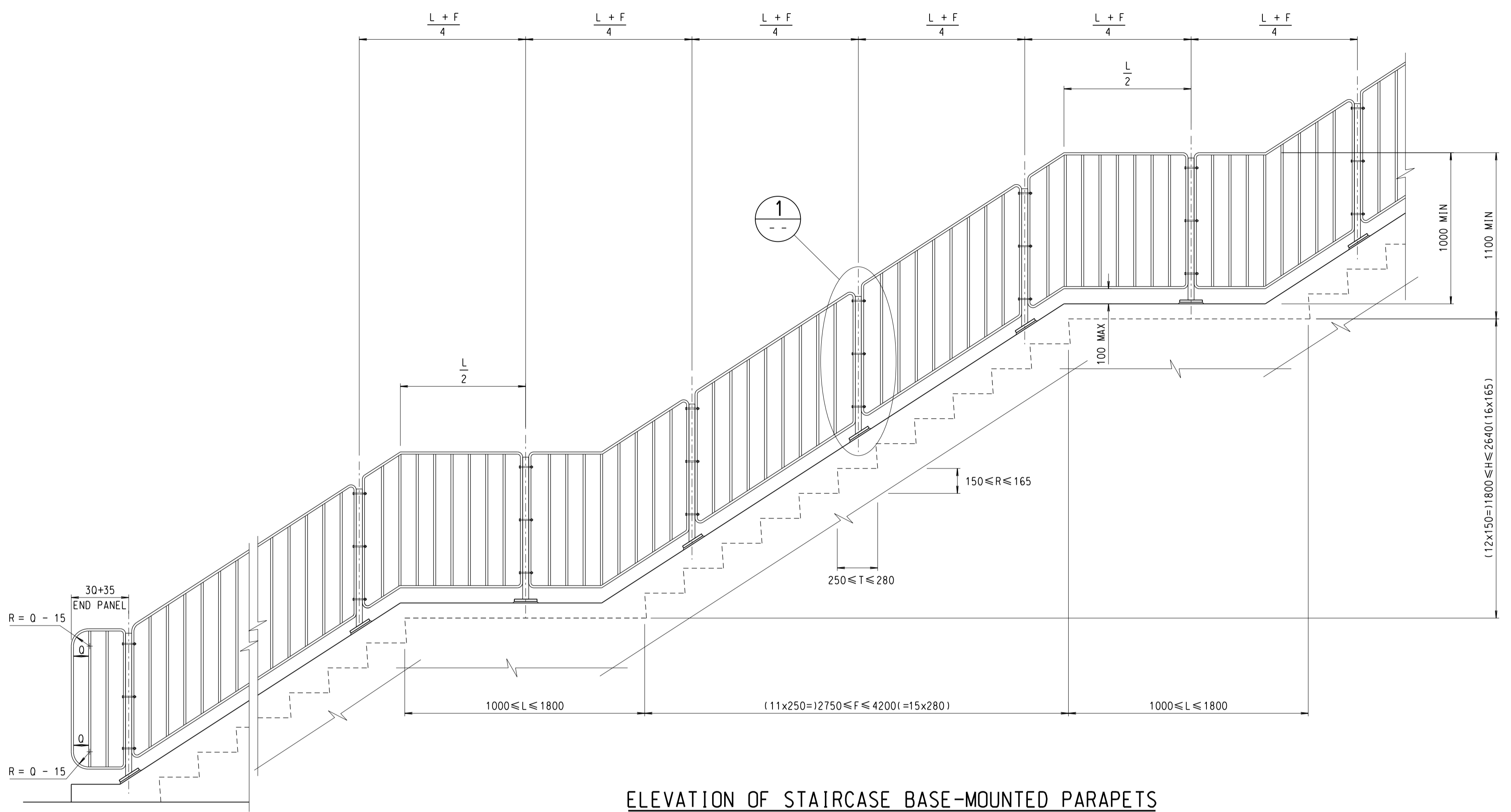
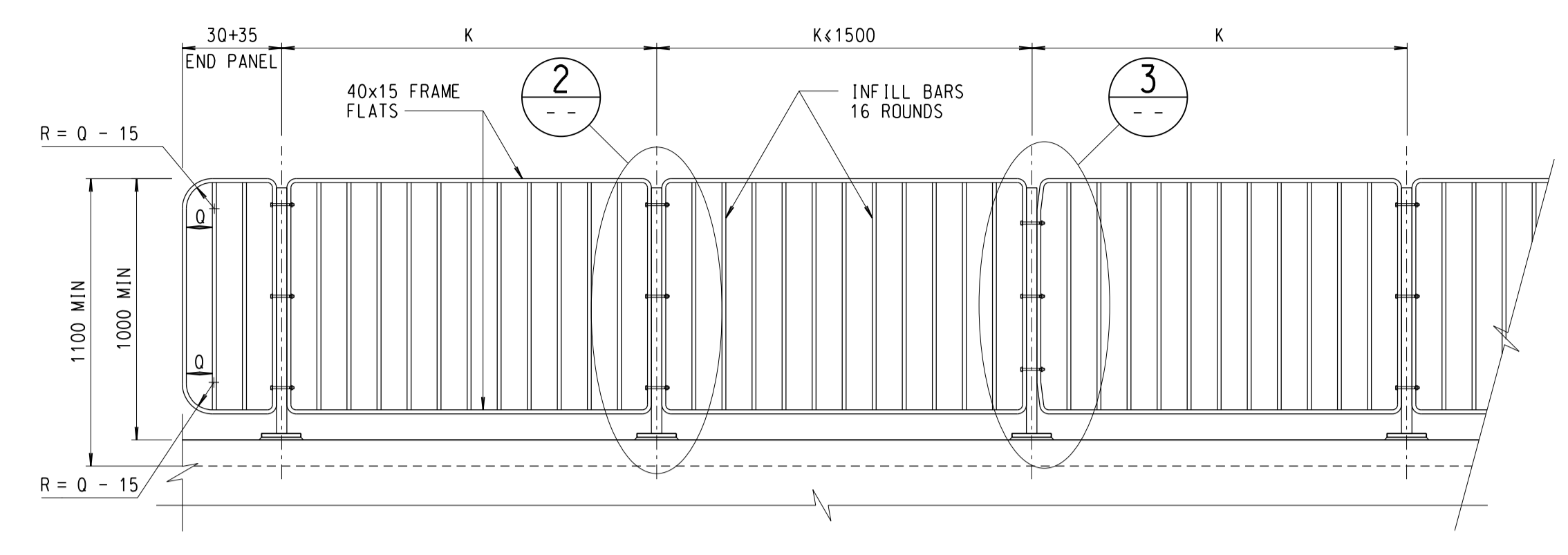


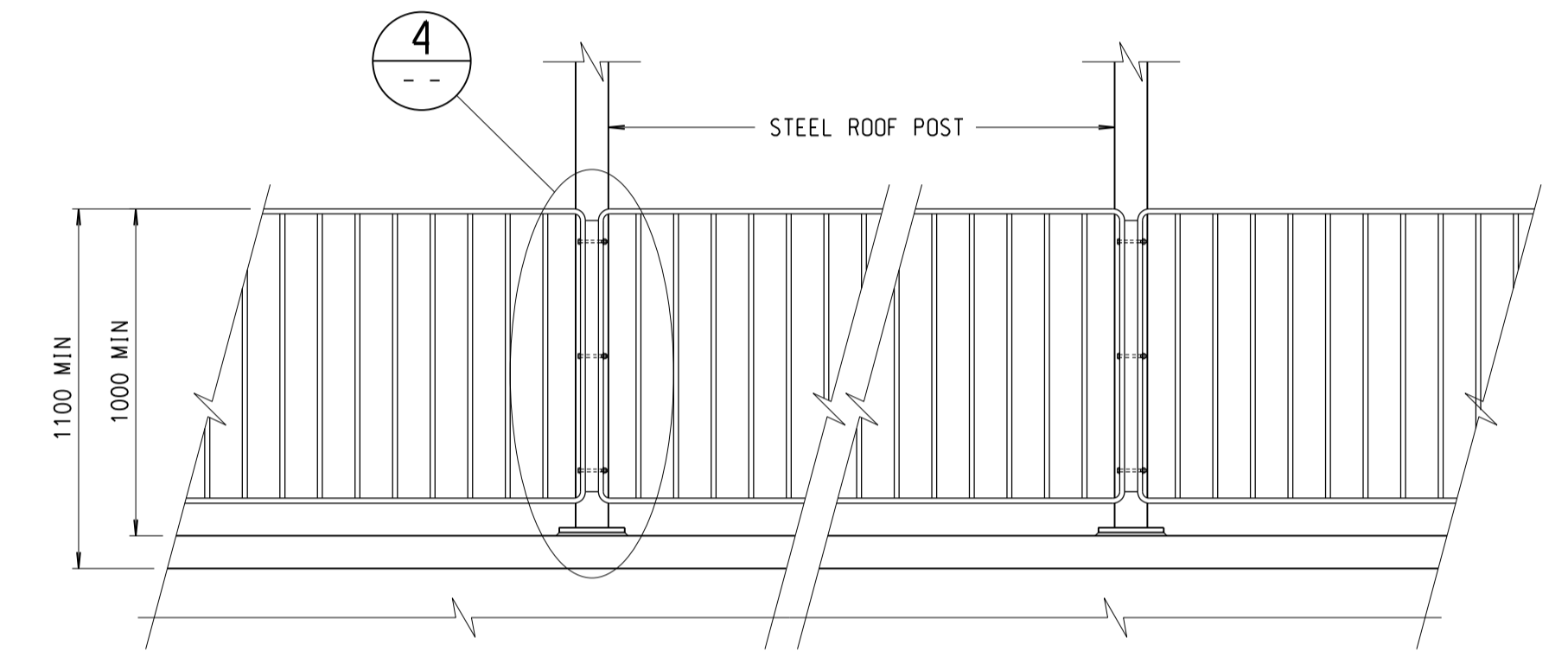
- NOTES:
1. ALL DIMENSIONS ARE IN MILLIMETRES UNLESS OTHERWISE SPECIFIED.
  2. STEEL IS TO BE GRADE S275J0 TO BS EN 10025.
  3. STEELWORK IS TO BE HOT-DIP GALVANISED TO BS EN ISO 1461 AFTER FABRICATION.
  4. EXPANSION GAP 'G' IS TO BE APPROPRIATE FOR THE ANTICIPATED MOVEMENT.
  5. WELDING IS TO BE IN ACCORDANCE WITH BS EN 1011-1 & BS EN 1011-2 AND ELECTRODES ARE TO BE IN ACCORDANCE WITH BS EN 499.
  6. WELDS ARE TO BE 5mm FILLET WELDS UNLESS OTHERWISE STATED.
  7. AFTER ERECTION PARAPETS ARE TO BE PAINTED WITH PAINT SYSTEM  
 PRETREATMENT : TWO-PACK ETCH PRIMER  
 PRIMER : CHLORINATED RUBBER ZINC PHOSPHATE PRIMER, 70 µm MINIMUM TOTAL DRY-FILM THICKNESS  
 UNDERCOAT : MICACEDIOUS IRON OXIDE CHLORINATED RUBBER UNDERCOAT, 100 µm MINIMUM TOTAL DRY-FILM THICKNESS  
 FINISH : CHLORINATED RUBBER FINISH COAT THAT IS RESISTANT TO FISH OIL AND OTHER ANIMAL AND VEGETABLE OILS, 60 µm MINIMUM TOTAL DRY-FILM THICKNESS
  8. DETAILS SHOWN OF ROOF POSTS AND UNDERLYING STRUCTURE ARE ILLUSTRATIVE ONLY AND SHOULD BE CHANGED TO SUIT ACTUAL PROJECTS.
  9. FURTHER BASE MOUNTING DETAILS ARE SHOWN ON DRAWING No. SSD 71.
  10. EXPANSION JOINTS ARE TO BE PROVIDED TO CORRESPOND WITH MOVEMENT JOINTS IN THE UNDERLYING STRUCTURE.
  11. FOR DETAILS OF RAILINGS TO BE USED AT-GRADE, REFER TO HYD STANDARD DRAWING No. H2130.
  12. HANDRAILS MUST BE PROVIDED ON BOTH SIDES OF ALL RAMPS AND STAIRWAYS. DETAILS ARE SHOWN ON DRAWING No. SSD 102.



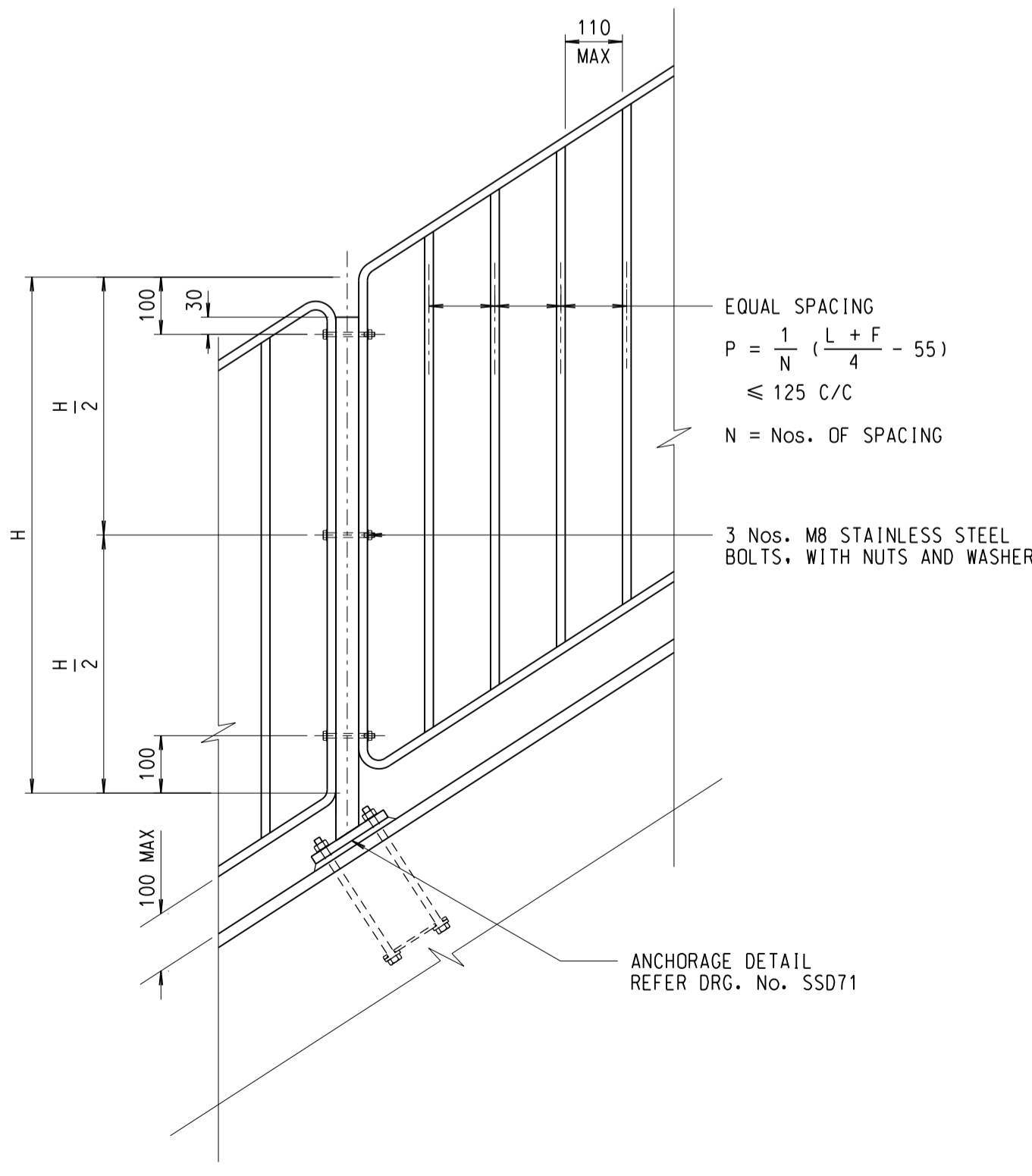
ELEVATION OF STAIRCASE BASE-MOUNTED PARAPETS  
SCALE 1:20



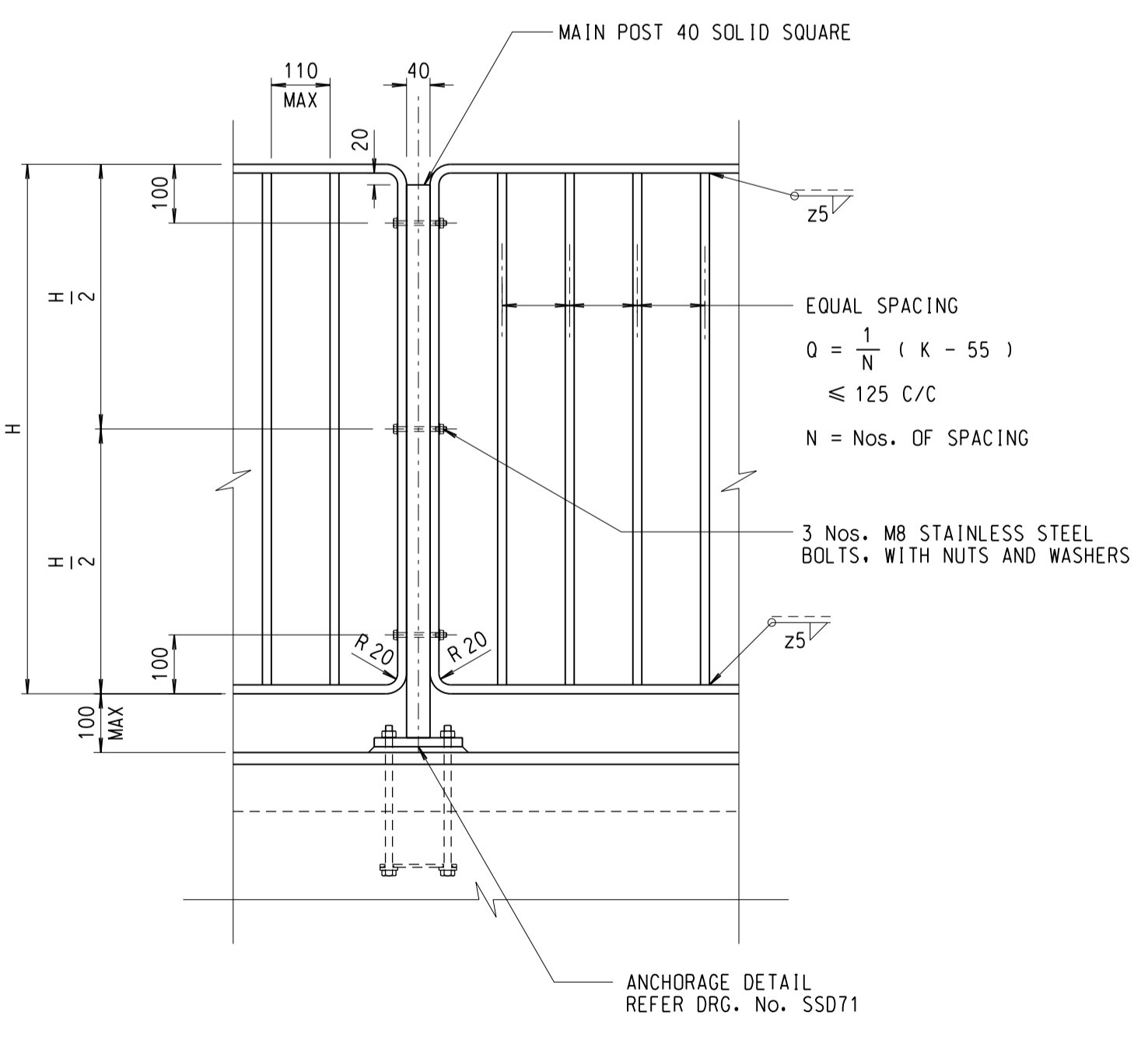
ELEVATION OF HORIZONTAL BASE-MOUNTED PARAPETS  
SCALE 1:20



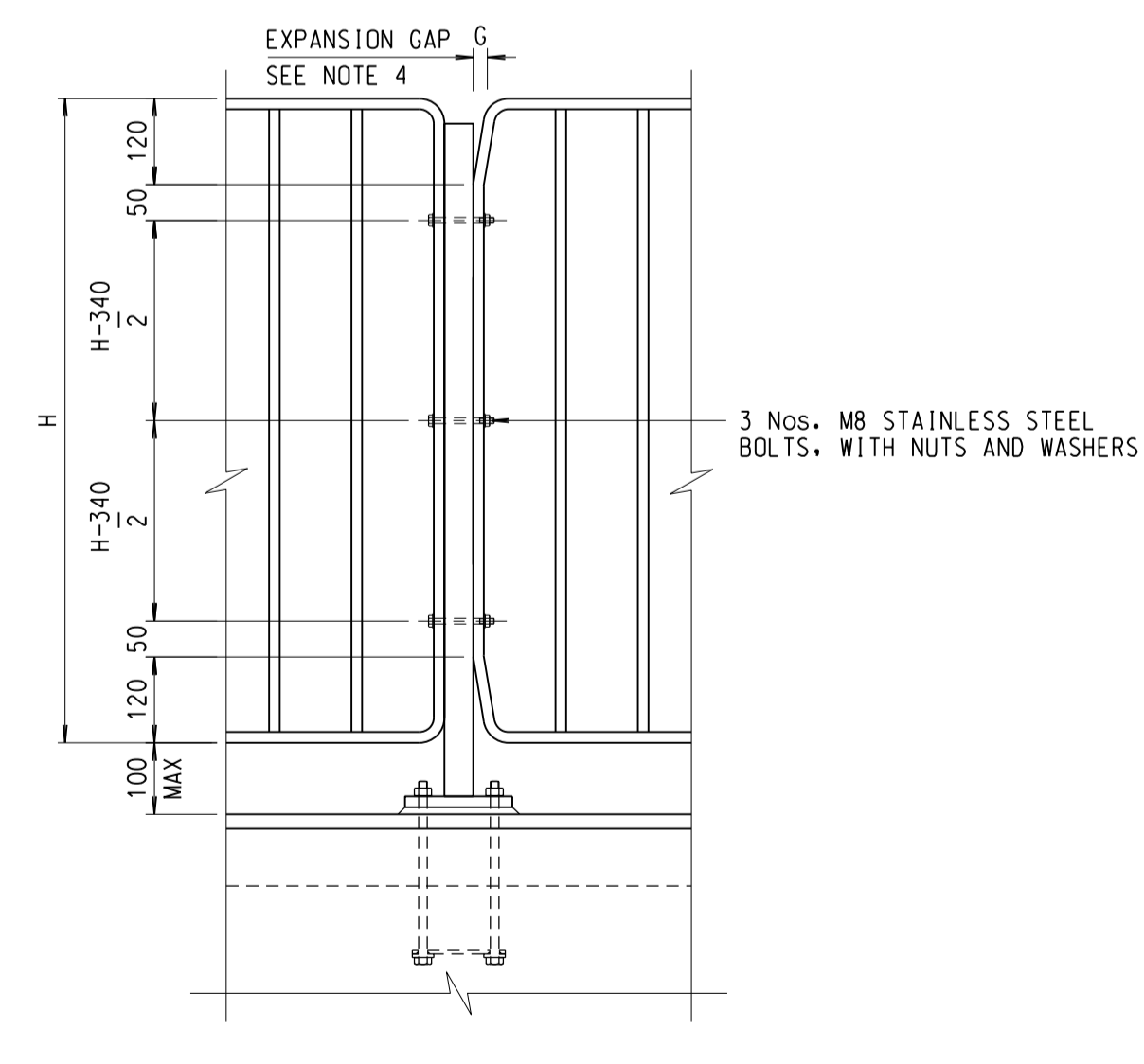
ELEVATION OF ROOF POST-MOUNTED PARAPETS  
SCALE 1:20



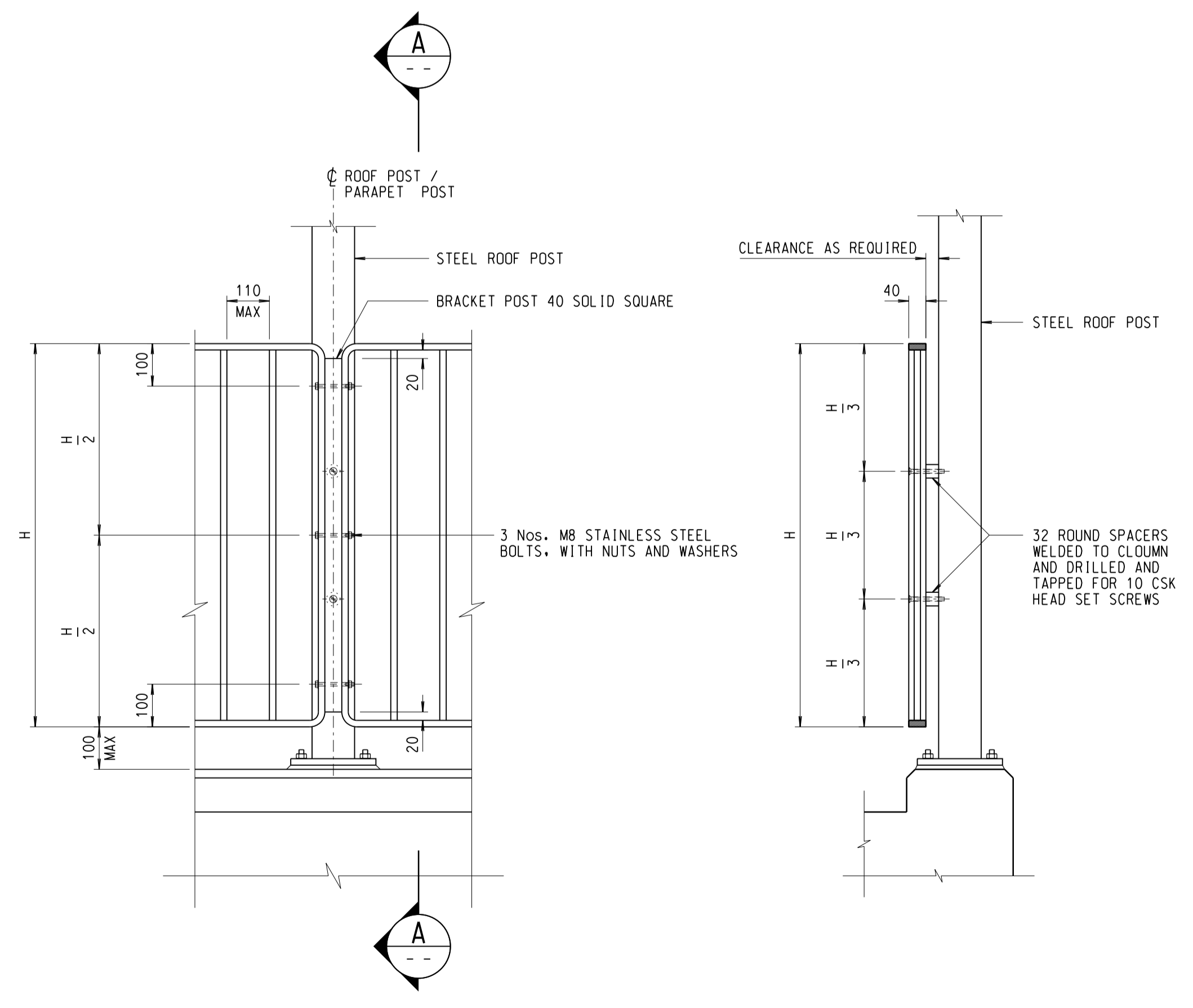
DETAIL 1  
SCALE 1:10



DETAIL 2  
SCALE 1:10



DETAIL 3  
SCALE 1:10



DETAIL 4  
SCALE 1:10

SECTION A  
SCALE 1:10

no.	date	description	initial
F	01/19	DETAILS REVISED	SIGNED C.H. WONG, E/P2-1 SIGNED M.K. CHU, SE/P2
E	09/09	DRAWING RE-DRAWN BASE MOUNTING AND END PANEL REVISED	SIGNED M.W. CHENG, AE/P2-4 SIGNED P.T. LEUNG, SE/P2
D	05/90	DETAIL 'A' REVISED	SIGNED
C	08/86	NOTE TO HEIGHT OF PARAPET ADDED	SIGNED
B	05/85	SPACING OF INFILL POSTS REVISED	SIGNED
A	05/83	VALUE OF 'K' DENOTED	SIGNED

REVISION			
	name	signature	date
designed			
drawn	S.K. CHU	SIGNED	16/11/82
checked			
senior technical officer / project engineer			
senior engineer	H. TUNG	SIGNED	2/2/82
approved			
		SIGNED	3 FEB. 1982
	Chief Highway Engineer		date

contract no.  
file no.  
project no.  
contract

drawing title  
**PEDESTRIAN PARAPET TYPE 2**

drawing no. **SSD14-F** scale **AS SHOWN**

