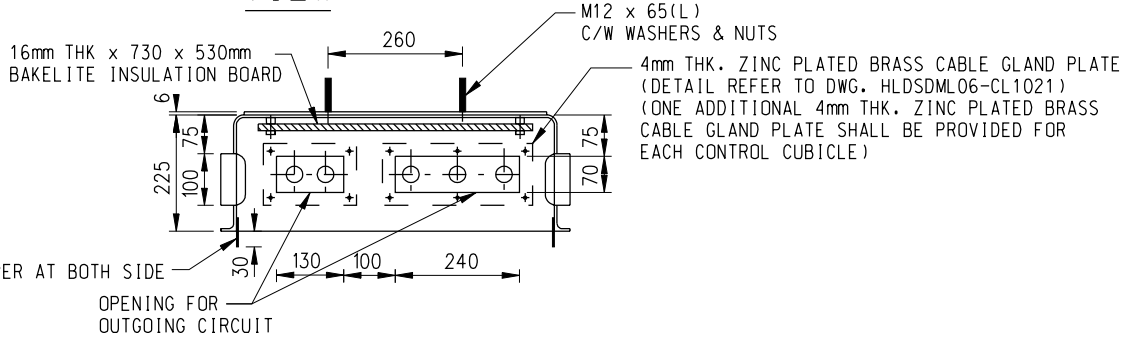
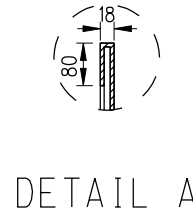
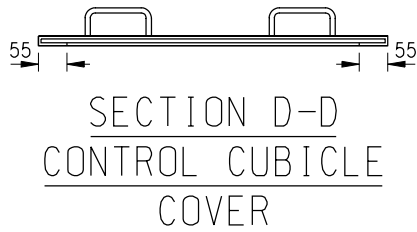


FRONT VIEW
(CONTROL CUBICLE COVER REMOVED FOR CLARITY)

SECTIONAL SIDE VIEW

FRONT VIEW SIDE VIEW



PLAN
CONTROL CUBICLE
WITH COVER REMOVED

- NOTES:
1. ALL DIMENSIONS ARE IN MILLIMETERS.
 2. THIS DRAWING SHOULD READ IN CONJUNCTION WITH DRAWING NO. HLDSMLO6-CL1021B.
 3. ALL EXPOSED CABLES, EITHER INCOMING OR OUTGOING, SHALL BE ACCOMMODATED IN G.I. CABLE DUCTS TO THE SATISFACTION OF THE ENGINEER.
 4. THE SUPPORTING POLE SHALL BE OF AT LEAST 130mm DIAMETER GI PIPE WITH AT LEAST 1000mm PLANTING DEPTH UNLESS PROPOSED OTHERWISE BY THE CONTRACTOR.
 5. THE HEIGHT OF BOTTOM OF THE POLE-MOUNTED CONTROLLER SHALL BE SET AT 2m ABOVE GROUND LEVEL.

D	General revision		Jun 18
C	Meter Window Amended		Jan 18
B	General revision		Aug 14
A	General revision of notes		Mar 07
	Former Drg. No. HLDSGE01-CL0023C with general revision		Feb 06
REF.	REVISION	SIGNATURE	DATE

PUBLIC LIGHTING FIBRE GLASS
POLE-MOUNTED CONTROL CUBICLE
(SHEET 1 OF 2)

HIGHWAYS DEPARTMENT LIGHTING DIVISION		
REFERENCE	DRAWING No.	CAD
SCALE	HLDSMLO6-CL1020D	
N.T.S.		