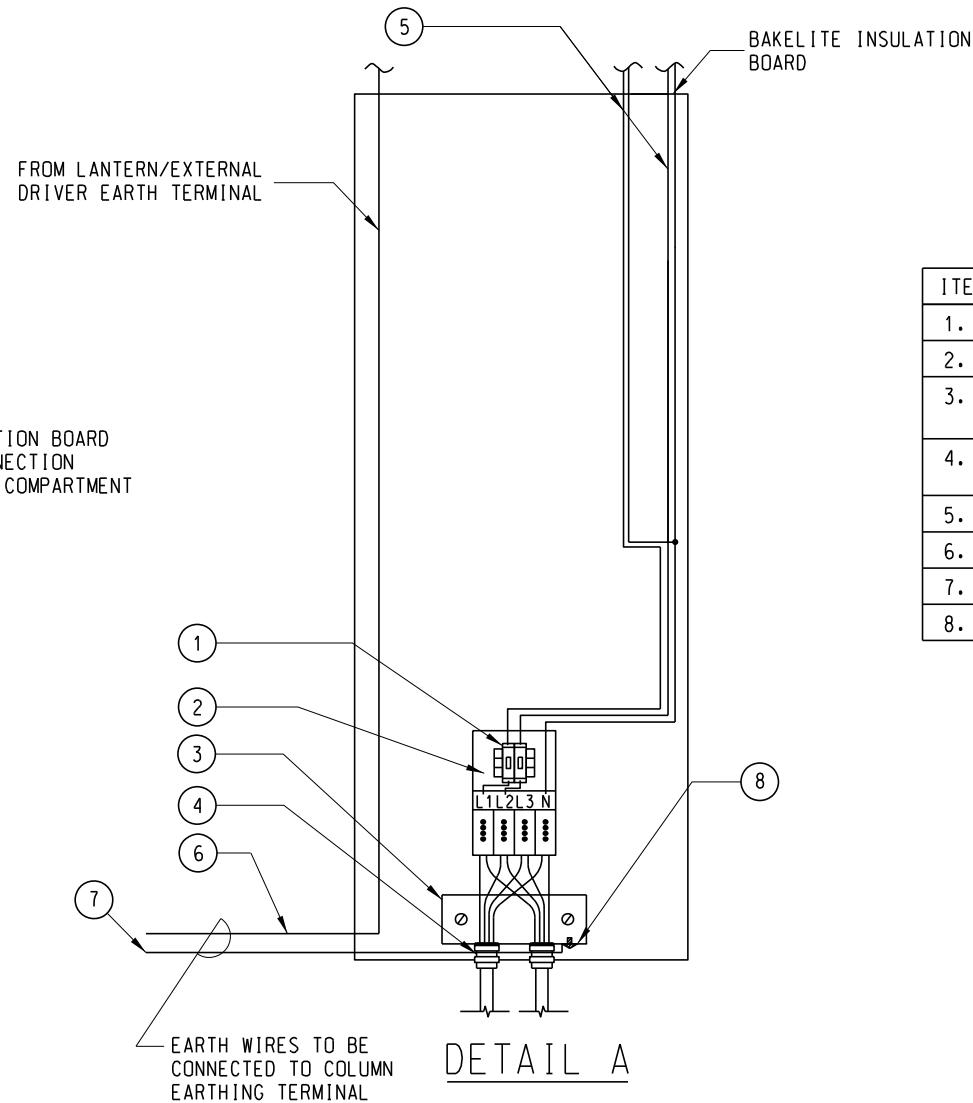


ELEVATION



DETAIL A

NOTES:

1. ALL DIMENSIONS ARE IN MILLIMETRES.
2. ALL LOSSED WIRES SHOULD BE BOUND NEATLY BY CABLE TIES.
3. EARTH WIRE TO BE SEPARATELY RUN & CONNECTED TO THE COLUMN EARTHING TERMINAL.

ITEM NO.	DESCRIPTION
1.	MCB
2.	STREET LIGHTING CUT-OUT BOX
3.	ZINC PLATED BRASS CABLE GLAND ANCHOR PLATE
4.	25mm ² POST SEAL CABLE GLAND C/W LOCK NUT
5.	2.5mm ² 2/C XLPE/PVC Cu CABLE
6.	2.5mm ² 1/C EARTH Cu CABLE
7.	16mm ² 1/C EARTH Cu CABLE
8.	CRIMPING LUG

	New Issue		Jun 21
REF.	REVISION	SIGNATURE	DATE

HIGHWAYS DEPARTMENT
LIGHTING DIVISION

REFERENCE	DRAWING No.	CAD
SCALE	HLSDML01-CL1030	
N.T.S.		

TYPICAL LOOP-IN CONNECTION
FOR DOUBLE-ARMED COLUMN
WITH LED ROAD LIGHTS