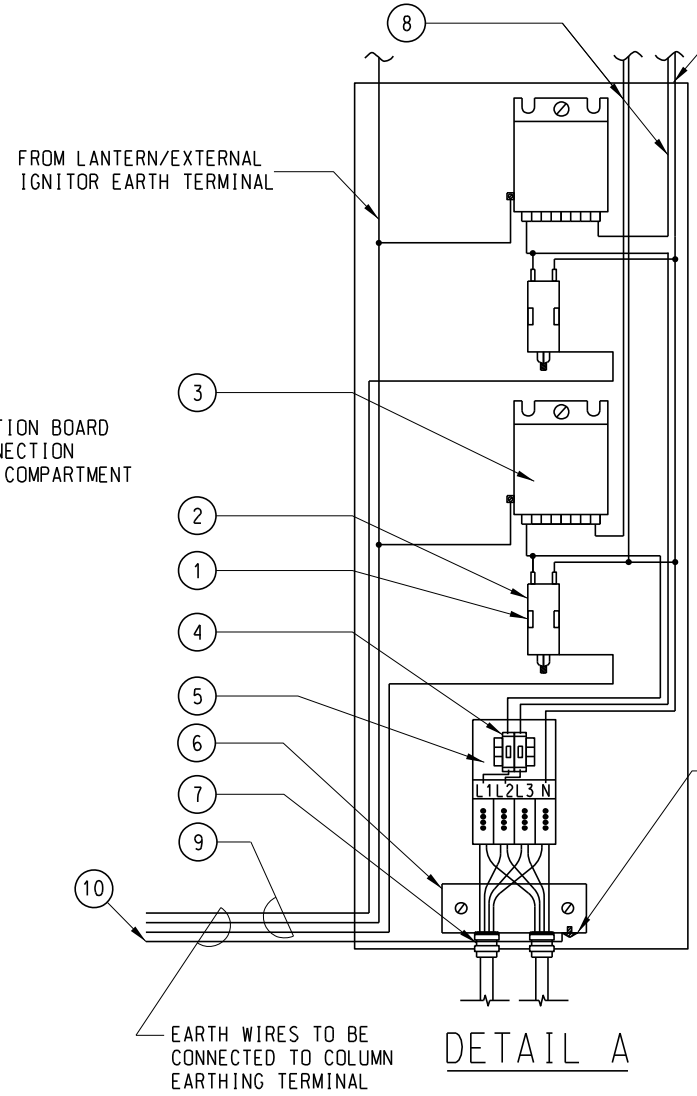


ELEVATION



DETAIL A

- NOTES:
1. ALL DIMENSIONS ARE IN MILLIMETRES.
 2. ALL LOSSED WIRES SHOULD BE BOUND NEATLY BY CABLE TIES.
 3. EARTH WIRE TO BE SEPARATELY RUN & CONNECTED TO THE COLUMN EARTHING TERMINAL.

ITEM NO.	DESCRIPTION
1.	OMEGA (SPRING) CLIP
2.	CAPACITOR
3.	BALLAST
4.	MCB
5.	STREET LIGHTING CUT-OUT BOX
6.	ZINC PLATED BRASS CABLE GLAND ANCHOR PLATE
7.	25mm ² POST SEAL CABLE GLAND C/W LOCK NUT
8.	2.5mm ² 2/C XLPE/PVC Cu CABLE
9.	2.5mm ² 1/C EARTH Cu CABLE
10.	16mm ² 1/C EARTH Cu CABLE
11.	CRIMPING LUG

REF.	REVISION	SIGNATURE	DATE
F	General revision		Jun 21
E	General revision		May 07
D	Title amended Bakelite insulation board used.		Feb 06
C	General revision Former Drawing No. Revised.		May 04
B	General revision		Jul 02
A	General revision		Jun 02
	Former Drg. No. LSD2000-CL0012 with general revision		Dec 01

TYPICAL LOOP-IN CONNECTION FOR DOUBLE-ARM LIGHT

HIGHWAYS DEPARTMENT LIGHTING DIVISION

REFERENCE	DRAWING No.	CAD
SCALE	HLSDML01-CL1013F	
N.T.S.		