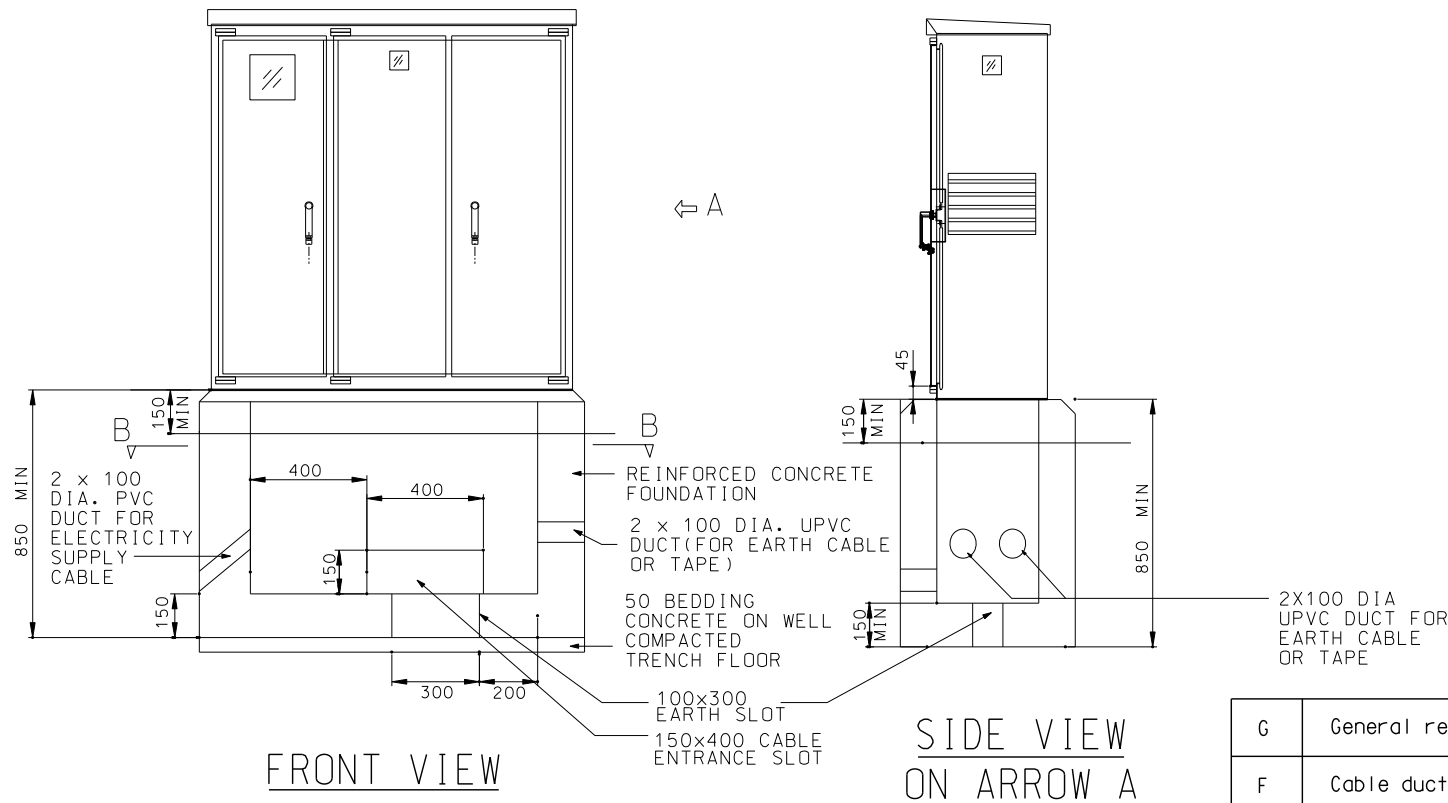


NOTES:

1. FOR GENERAL NOTES REFER TO DRG. NO. HLSDML01-CL1001.
2. ALL CONCRETE SHALL BE OF GRADE 30/20.
3. STEEL FABRIC REINFORCEMENT OF A393 COMPLYING WITH BS4483:1998 SHALL BE CENTRALLY PROVIDED IN THE CONCRETE FOUNDATION.
4. HOLES AND/OR SLOTS SHALL BE FORMED IN THE CONCRETE FOUNDATION TO ACCOMMODATE EARTHING RODS, WIRES, TAPES ETC. AS SPECIFIED BY THE ENGINEER.
5. THE NOMINAL HEIGHT OF THE CONCRETE FOUNDATION IS 850mm min OR SPECIFIED BY THE ENGINEER.
6. THE INTERIOR OF THE FOUNDATION SHALL BE BACKFILLED BY GRANULAR OR SANDY MATERIAL UP TO GROUND LEVEL WHEN COMPLETED THE CUBICLE, EARTHING AND CABLE INSTALLATION.



FRONT VIEW

SIDE VIEW ON ARROW A

PLAN VIEW B-B

CONCRETE FOUNDATION

REF.	REVISION	SIGNATURE	DATE
G	General revision		Aug 14
F	Cable duct position revised.		Feb 06
E	Details revised.		Jul 04
D	General revision of notes. Former Drawing No. Revised.		May 04
C	General revision of notes.		Mar 03
B	General revision of notes.		Jul 02
A	General revision of notes.		Jun 02
	Former Drg. No. LSD2000-CL0027 with general revision		Dec 01

STANDARD GROUND MOUNTED
PUBLIC LIGHTING CONTROL CUBICLE
(SHEET 7 OF 7)

HIGHWAYS DEPARTMENT
LIGHTING DIVISION

REFERENCE	DRAWING No.	CAD
SCALE	HLSDML01-CL1007G	
N.T.S.		