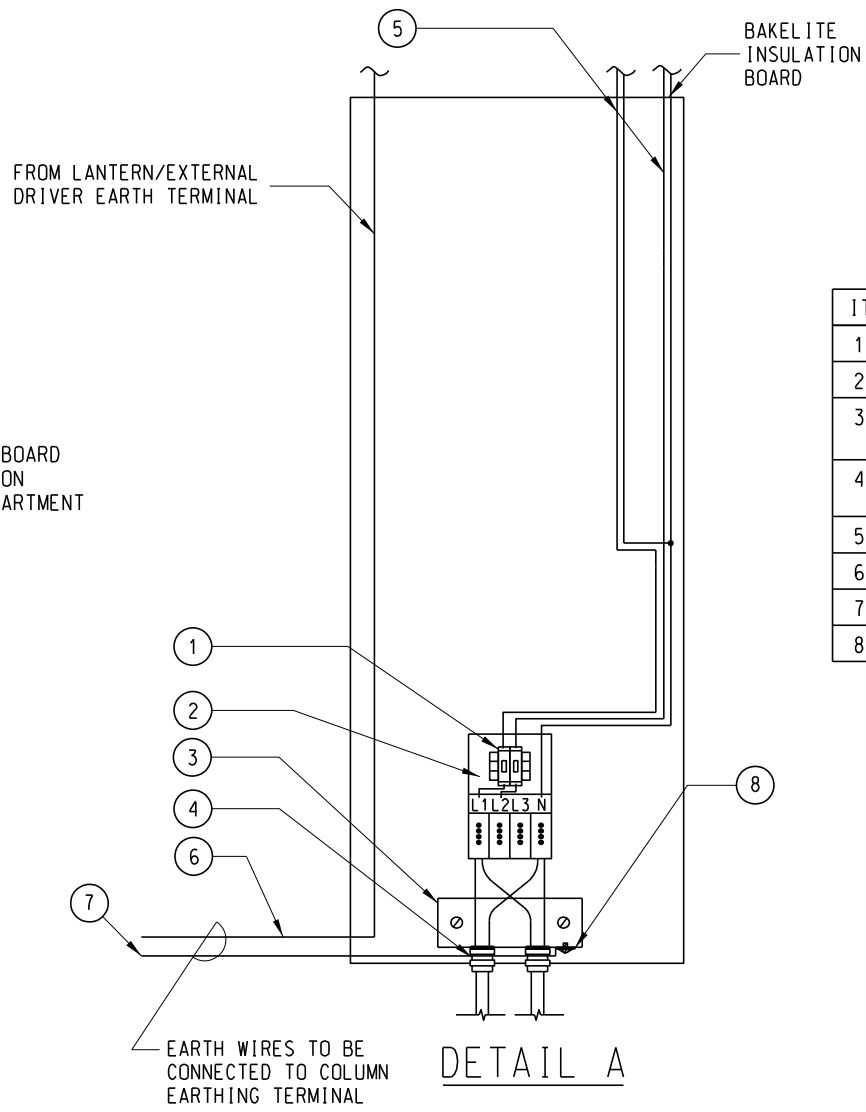


ELEVATION



DETAIL A

NOTES:

1. ALL DIMENSIONS ARE IN MILLIMETRES.
2. ALL LOOSE WIRES SHOULD BE BOUND NEATLY BY CABLE TIES.
3. EARTH WIRE TO BE SEPARATELY RUN & CONNECTED TO THE COLUMN EARTHING TERMINAL.

ITEM NO.	DESCRIPTION
1.	MCB
2.	STREET LIGHTING CUT-OUT BOX
3.	ZINC PLATED BRASS CABLE GLAND ANCHOR PLATE
4.	35mm ² POST SEAL CABLE GLAND C/W LOCK NUT
5.	2.5mm ² 2/C XLPE/PVC Cu CABLE
6.	2.5mm ² 1/C EARTH Cu CABLE
7.	16mm ² 1/C EARTH Cu CABLE
8.	CRIMPING LUG

	New Issue		Jun 21
REF.	REVISION	SIGNATURE	DATE

TYPICAL LOOP-IN CONNECTION IN PUBLIC LIGHTING COLUMN RECESS FOR DOUBLE-ARMED COLUMN WITH LED ROAD LIGHTS

HIGHWAYS DEPARTMENT LIGHTING DIVISION	
REFERENCE	DRAWING No. CAD
SCALE	N.T.S.
HLDSDHK01-CL2027	