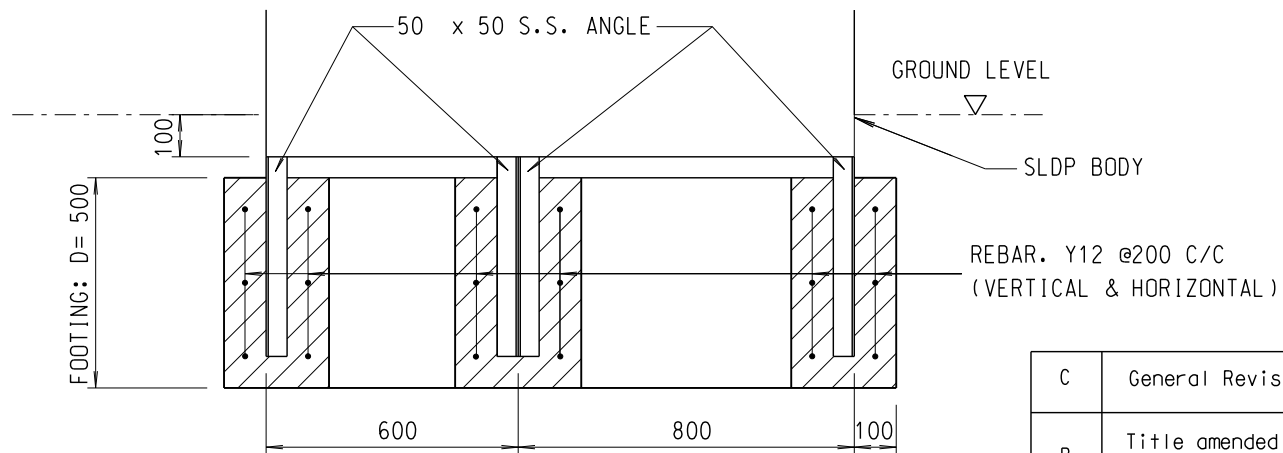


TOP VIEW OF FOOTING BASE

NOTES:

- 1) MINIMUM COVER TO REINFORCEMENT SHALL BE 50mm.
- 2) THE CONCRETE GRADE SHALL BE GRADE 20/20.



SECTION B - B

REF.	REVISION	SIGNATURE	DATE
C	General Revision		May 09
B	Title amended Former Drg. No. revised		Mar 05
A	Minor amendment		Oct 02

FOOTING DETAIL FOR NEW PUBLIC
LIGHTING CONTROL CUBICLE

HIGHWAYS DEPARTMENT
LIGHTING DIVISION

REFERENCE	DRAWING No.	CAD
SCALE	HLDS DHK01-CL2012C	
N.T.S.		