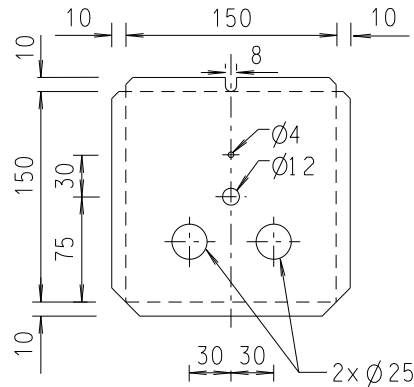
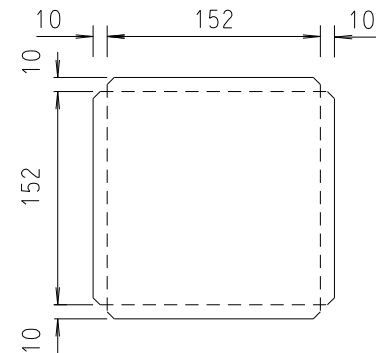


SECTIONAL DETAIL

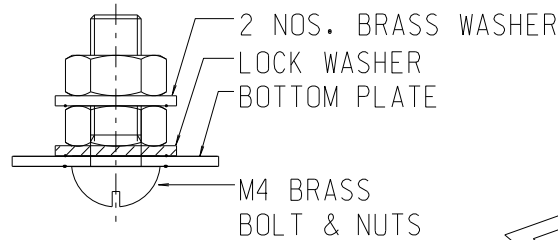


DETAIL OF OPENING FOR BOTTOM PLATE

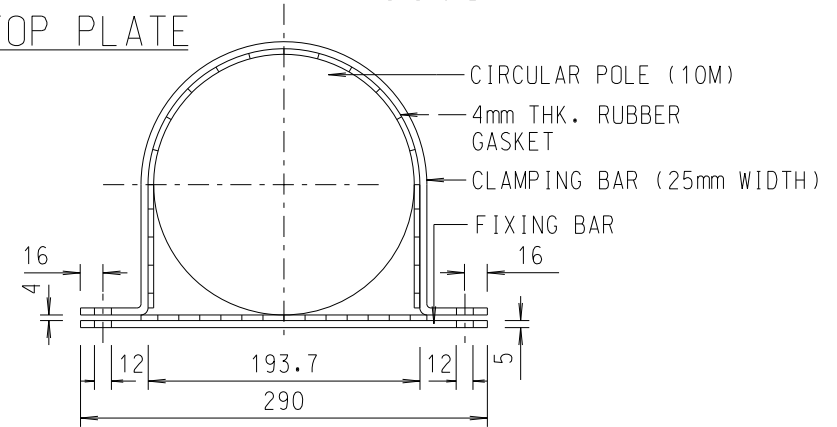


DETAIL OF TOP PLATE

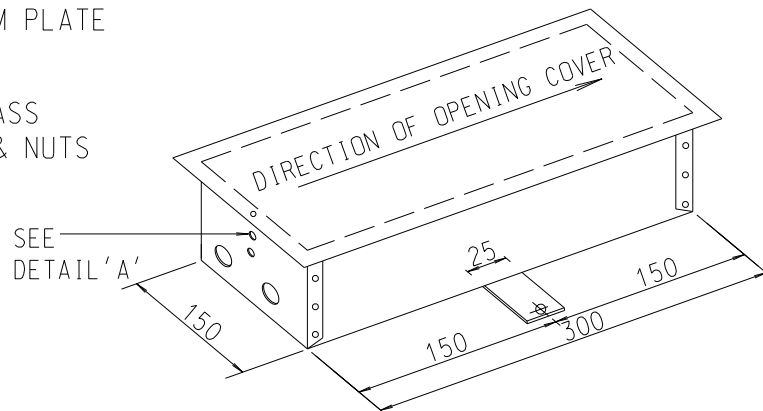
- NOTES:
1. ALL DIMENSIONS ARE IN MILLIMETER UNLESS OTHERWISE STATED.
  2. THIS BOX SHALL BE CONSTRUCTED BY 1mm THICK HOT-DIP GALVANISED SHEET STEEL TO BS EN ISO1461.
  3. FIXING BAR & CLAMPING BAR SHOULD BE HOT-DIP GALVANISED TO BS EN ISO1461.
  4. THIS BOX SHALL BE ASSEMBLED BY FILLET WELD OTHER THAN THE FIXING BAR.



DETAIL 'A'



DETAIL OF CLAMPING METHOD



ISOMETRIC VIEW

DIAGRAMMATIC

B	General Revision		Apr 09
A	General Revision of notes		Jul 05
	Formal Drg. No.LDSDHK01-CL2004 with general revision		Jul 05
REF.	REVISION	SIGNATURE	DATE

HIGHWAYS DEPARTMENT  
LIGHTING DIVISION

DETAILS OF CONTROL GEAR BOX CLAMPING TO THE POLE

REFERENCE	DRAWING No.	CAD
SCALE N.T.S.	HLSDHK01-CL2004B	