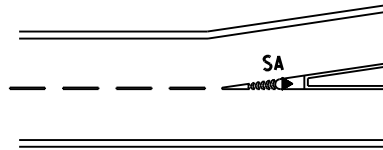
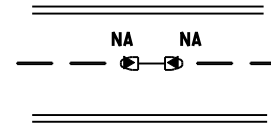


NOTES:

1. NRTBs CANNOT BE INSTALLED AT LOCATIONS (TB,CB) AS SHOWN IN THIS DRAWING. THE PROPOSAL OF LOCATIONS FOR INSTALLING NRTBs SHALL BE SUBMITTED FOR APPROVAL OF THE ENGINEER.



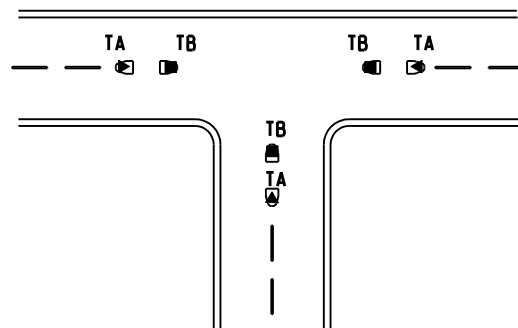
**SLIP ROAD JUNCTION
(FOR UNI-DIRECTIONAL TRAFFIC)**



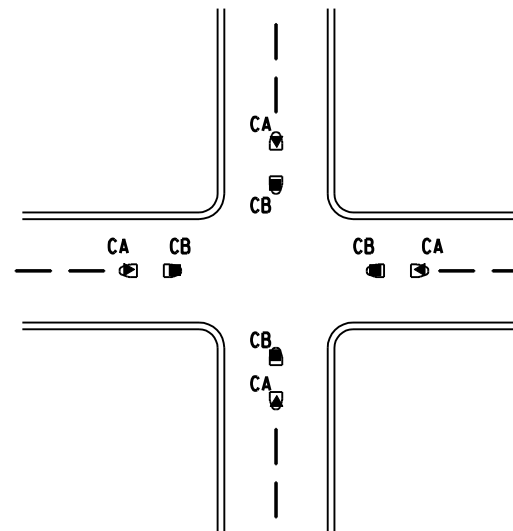
**NON-JUNCTION
(WITH REFUGE ISLANDS)**

LEGEND:

- ILLUMINATED TRAFFIC BOLLARD (ITB)
- ▲ NRTB



T-Road Junction



Cross-Road Junction

**GENERAL INSTALLATION SCENARIOS OF
NON-ILLUMINATED RETRO-REFLECTIVE
TRAFFIC BOLLARD (NRTB)**

	First Issue		Jul 15
REF.	REVISION	SIGNATURE	DATE
HIGHWAYS DEPARTMENT LIGHTING DIVISION			
REFERENCE	DRAWING No.	CAD	
SCALE	N.T.S.	HLSDSGE06-CL0046	