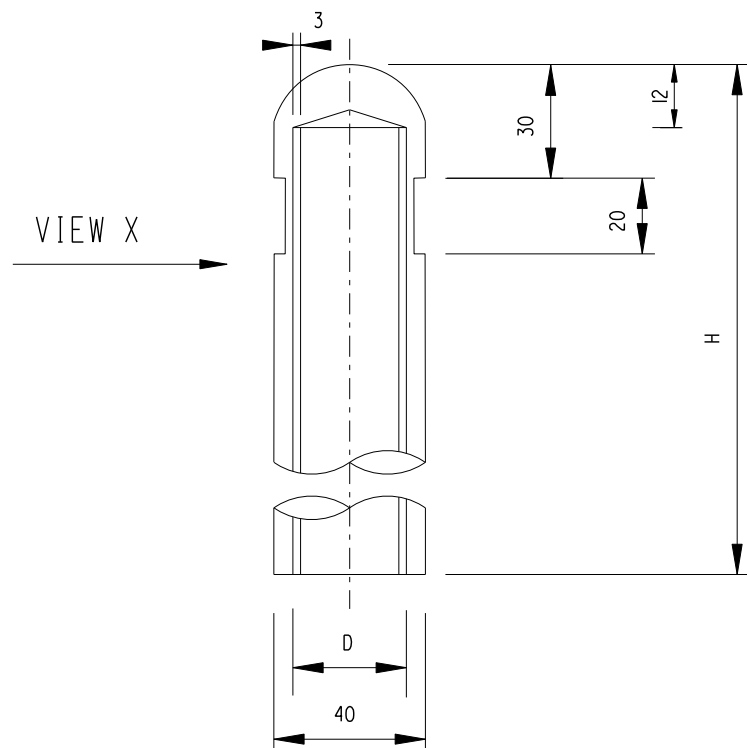
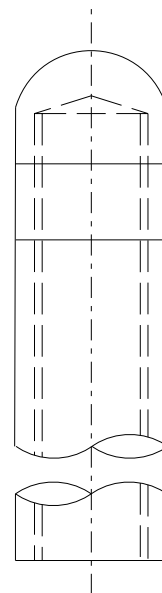


PLAN



SECTIONAL ELEVATION



VIEW X

NOTES:

1. MATERIAL OF THE BOLT CAP SHALL BE MADE OF NYLON66 OR EQUIVALENT WITH HEAT DEFLECTION TEMPERATURE OF 190 DEG C. AT HDT/B (0.45 MPa)
2. COLOUR OF THE BOLT CAP SHALL BE GREY.
3. FOR HOLDING DOWN BOLTS WITH LESS THAN 30mm PROTRUDING PORTION, NO BOLT CAP SHOULD BE INSTALLED.
4. STEAM TAPE SHALL BE APPLIED ON THE HOLDING DOWN BOLTS BEFORE THE BOLT CAP IS INSTALLED.
5. FOR HOLDING DOWN BOLTS WITH SIZE OTHER THAN M24 OR M27, THE DIMENSION OF D AND PITCH OF THE THREADS SHALL BE MATCHED WITH THE HOLDING DOWN BOLT.
6. THE ACTUAL LENGTH OF THE BOLT CAP TO BE INSTALLED ON SITE SHALL BE MEASURED AND CUT TO FULLY COVER THE PROTRUDED PORTION OF THE HOLDING DOWN BOLT.

BOLT SIZE	D	H
M24	24mm	65/100/200mm TO SUIT
M27	27mm	65/100/200mm TO SUIT
OTHERS	SEE NOTE 5	65/100/200mm TO SUIT

	Former Drg. No. HLSDGE05-CL0039 with general revision Table content revised and notes added		Feb 06
REF.	REVISION	SIGNATURE	DATE

HIGHWAYS DEPARTMENT  
LIGHTING DIVISION

HOLDING DOWN BOLT CAP

REFERENCE	DRAWING No.	CAD
SCALE N.T.S.	HLSDGE06-CL0041	