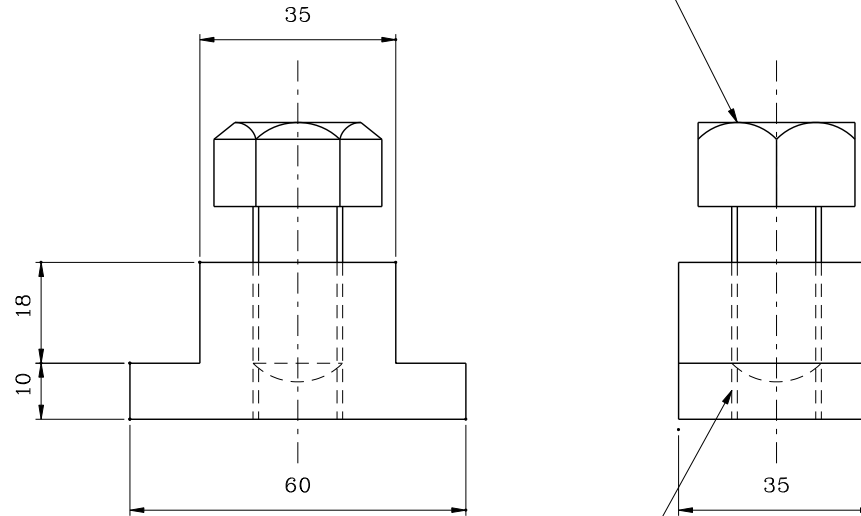


M16 x 30L FIXING STAINLESS STEEL
(S/S) BOLT FOR LANTERN
M16 x 30L FIXING STAINLESS STEEL
BOLT FOR CONDUIT CLAMP



HOLE DILL & TAP FOR M16 S/S SCREW
THREAD FOR LANTERN OR M10 S/S
SCREW THREAD FOR CONDUIT CLAMP

NOTES :

- FOR GENERAL NOTES REFER TO
DRAWING Nos. HLDSGE01-GS0001 TO GS0002

D	General Revision		Aug 14
C	General Revision		Mar 07
B	General Revision		Mar 06
A	General Revision		Jul 05
	Former Drg. No. LBSD2000-GS0011 with general revision		Dec 01
REF.	REVISION	SIGNATURE	DATE

GANTRY SIGN LIGHTING INSTALLATION-
TYPICAL DETAIL OF FIXING STAINLESS
STEEL BOLT AND NUT (SHEET 9 OF 10)

HIGHWAYS DEPARTMENT
LIGHTING DIVISION

REFERENCE	DRAWING No.	CAD
SCALE N.T.S.	HLDSGE01-GS0011D	