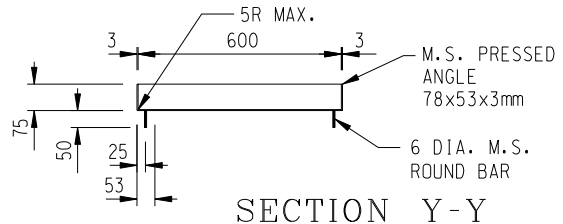
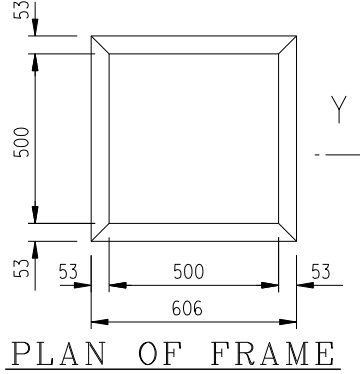


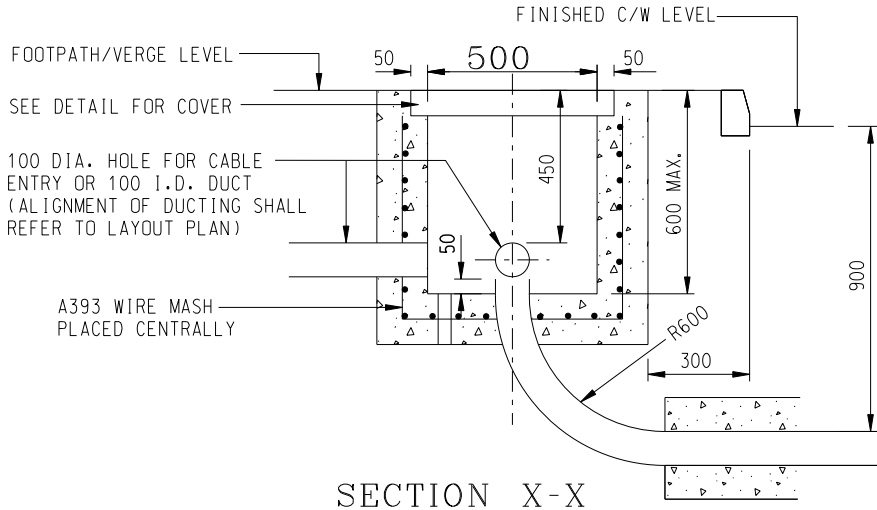
PLAN



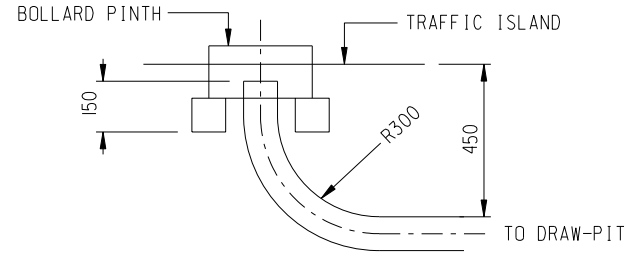
SECTION Y-Y



PLAN OF FRAME



SECTION X-X



TYPICAL END DETAILS OF DUCT ENTERING BOLLARD PINTH

NOTES:

1. DRAW-PIT COVER SHALL BE CONSTRUCTED IN ACCORDANCE WITH DRAWING NO. HLSDSGE01-CL0026.
2. ALL DIMENSIONS ARE IN MILLIMETRES.
3. ALL DUCTS SHALL BE UPVC UNLESS OTHERWISE STATED.
4. ALL DUCTS SHALL BE COMPLETED WITH 5mm DIA. NYLON DRAW-WIRE.
5. ALL M.S. SHALL BE HOT DIP GALVANIZED TO BS EN ISO 1461.
6. CONCRETE GRADE:
DRAW-PIT 20/20 &
COVER 30/20.
7. MATERIAL OF COVER & FRAME TO BE MILD STEEL TO B.S. 4360.
8. A GENERAL TOLERANCE ON ALL DIMENSIONS OF FABRICATION TO BE +/- 1mm.
9. ALL WELDING SPOTS IN CONTACT BETWEEN THE BEARING SURFACES OF THE FRAME AND COVER SHALL BE FINISHED SMOOTH.
10. ALL COVERS & FRAMES FOR DRAW PITS TO BE CONSTRUCTED AT PAVING BLOCK AREAS (i.e. RECESSED COVER AND FRAME) SHALL BE CLASS B125 IN ACCORDANCE WITH HIGHWAYS STANDARD DRAWING NOS. H2184 TO H2186 AND THE DETAILS SHALL BE SUBMITTED FOR THE ENGINEER'S APPROVAL. MODIFICATION DETAILS OF EXISTING DRAW PIT, IF ANY, SHALL ALSO BE SUBMITTED FOR APPROVAL PRIOR TO CONSTRUCTION.
11. THIS DRAWING SHOULD BE READ IN CONJUNCTION WITH DRAWING NO. HLSDSGE06-CL0040.
12. Space reduction measures shall be provided inside draw-pit in accordance with HIGHWAYS STANDARD DRAWING NOS. H2257 and H2258 or their latest version.

F	General revision of Notes		AUG 14
E	Note 12 added		Mar 10
D	General revision		Mar 07
C	Bottom duct to be protruded 50mm		Feb 06
B	General revision		Jul 05
A	General revision of Notes		Jun 02
	Former Drg. No. LDSD2000-CL0036		Dec 01
REF.	REVISION	SIGNATURE	DATE

PUBLIC LIGHTING DRAW-PIT DETAILS
(CONCRETE COVER)
(SHEET 1 OF 2)

**HIGHWAYS DEPARTMENT
LIGHTING DIVISION**

REFERENCE	DRAWING No.	CAD
SCALE N.T.S.	HLSDSGE01-CL0025F	