

NOTES:

1. ALL DIMENSIONS ARE IN MILLIMETRES.
2. DETAILS OF NUMBERING ARE AS FOLLOWS:
 - a. FOR VILLAGE LIGHTS & ROAD LIGHTS FOR PEDESTRIAN TRAFFIC

	LETTERS	NUMBERS
HEIGHT	38 (25)	38 (25)
WIDTH	38 (25)	38 (25)
SPACING	15 (10)	15 (10)

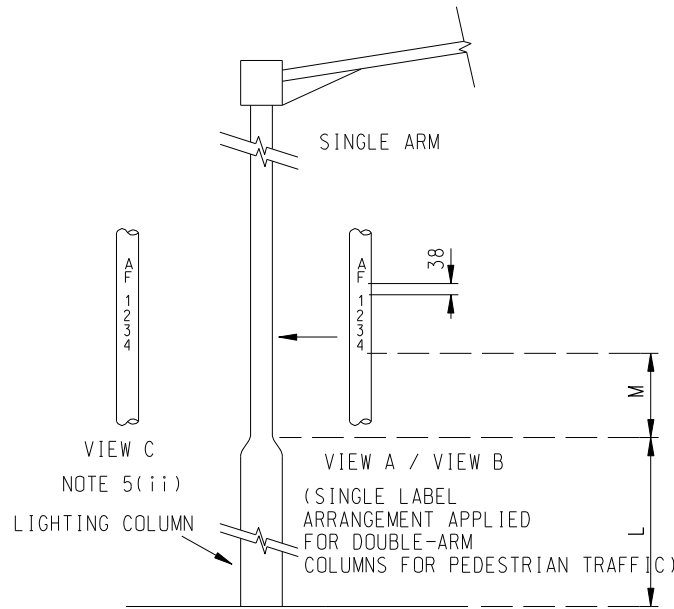
FIGURES IN BRACKETS ARE FOR DECORATIVE LIGHTS OF PEDESTRIAN SCHEME.

- b. FOR LIGHTS ON MOTORISED TRAFFIC ROUTE, INCLUDING DECORATIVE ONES.

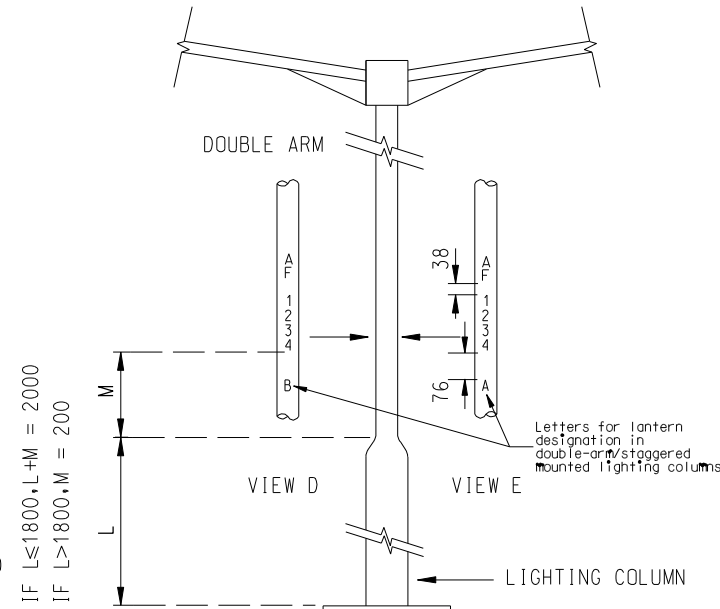
	LETTERS	NUMBERS
HEIGHT	38 (67)	38 (67)
WIDTH	38 (50)	38 (50)
SPACING	15 (20)	15 (20)

FIGURES IN BRACKETS ARE FOR COLUMNS INSTALLED ALONG HIGH SPEED ROADS AND EXPRESSWAYS.

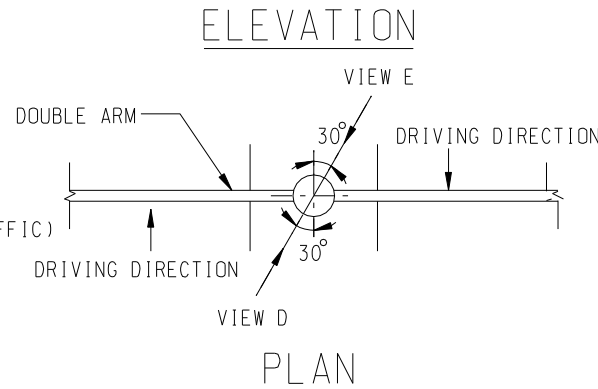
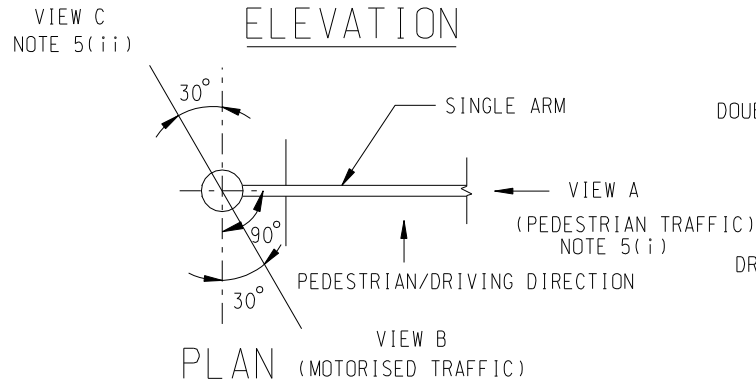
3. FONT TYPE OF NUMBERING SHALL BE ARIAL OR AS APPROVED BY THE ENGINEER.
4. THE NUMBERS AND ALPHABETS SHALL BE STENCIL-PAINTED (i) IN BLACK COLOUR ON WHITE COLOUR BACKING COAT FOR ROAD LIGHTING, (ii) IN WHITE COLOUR ON FINISH PAINT FOR DECORATIVE LIGHTS, OR AS INSTRUCTED BY THE ENGINEER.
5. COLUMN LABEL SHALL BE POSITIONED AS SHOWN. FOR SINGLE-ARM COLUMNS, (i) FOR PEDESTRIAN TRAFFIC, THE LABEL SHALL BE APPLIED IN THE PEDESTRIAN DIRECTION SIDE ONLY OR SPECIFIED BY THE ENGINEER (ii) FOR MOTORISED TRAFFIC, THE LABEL SHALL BE APPLIED IN THE DRIVING DIRECTION SIDE ONLY, UNLESS THE COLUMN IS OBSERVABLE BUT INACCESSIBLE BY THE PEDESTRIAN ON FOOTPATH, ADDITIONAL LABEL OPPOSITE TO THE DRIVING DIRECTION SIDE SHALL BE APPLIED.
6. COLUMN LABEL ON OCTAGONAL/CONICAL COLUMN SHALL BE PAINTED AT 2m HEIGHT ABOVE GROUND LEVEL OR SPECIFIED BY THE ENGINEER.



(a) SINGLE ARM ROAD LIGHT FOR MOTORISED / PEDESTRIAN TRAFFIC



(b) DOUBLE ARM ROAD LIGHT FOR MOTORISED TRAFFIC



H	Column label details revised		May 17
G	Column label details revised		Oct 14
F	Dimensions and noted revised		Feb 06
E	General revision of Notes Former drawing No. revised		Oct 05
D	General revision of Notes Former drawing No. revised		Mar 05
C	Size & paint details revised Former drawing No. revised		Jan 04
B	General revision		Jul 02
A	General revision		Jun 02
	Former Drg. No. LDS2000-CL0001 with general revision		Dec 01
REF.	REVISION	SIGNATURE	DATE

NUMBERING OF PUBLIC LIGHTING COLUMN

HIGHWAYS DEPARTMENT LIGHTING DIVISION

REFERENCE	DRAWING No.	CAD
SCALE	HLDSDE01-CL0001H	
N.T.S.		