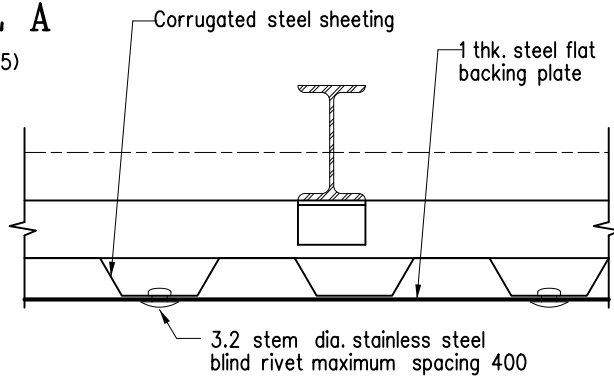


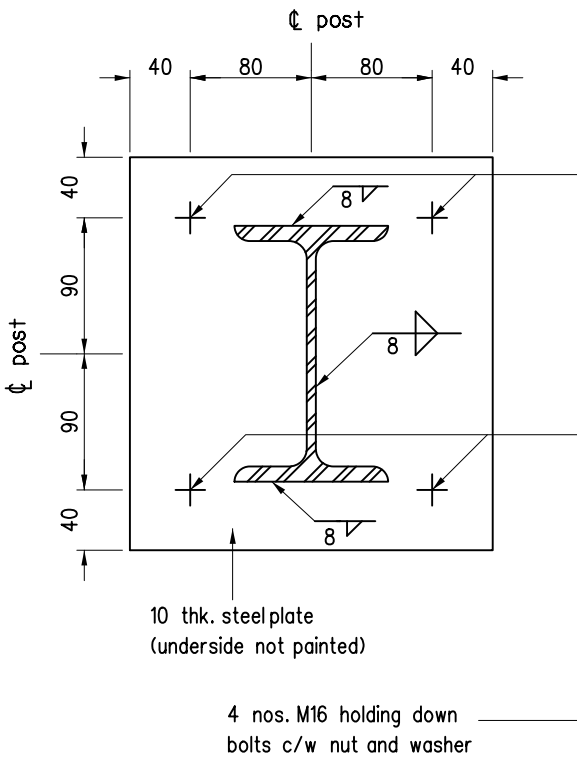
DETAIL A

(Scale 1:2.5)



DETAIL C

(Scale N.T.S.)



DETAIL B

(Scale 1:5)

Notes :

1. All dimensions are in millimetres.
2. Graphic film design and detail refer to individual contract requirements.
3. All steelwork except corrugated steel sheeting shall be Grade S275 steel to BS EN 10025 and shall be painted with system stated in Appendix 18.2.2 of GS 2020.
4. All concrete shall be grade 20/20. The use of recycled aggregates may be considered.
5. Corrugated steel sheeting shall have section modulus not less than 2000mm³/m. The sheeting shall be to BS3083 8/3 G350.
6. Alternative construction details (including foundation details) for the site hoarding, which must be capable of withstanding a wind pressure of 1.2 KPa, shall be agreed to by the Engineer.
7. The 3.2 stem dia. stainless steel blind rivet shall have stainless steel mandrel, min. tensile strength of 157 Kg and min. shear strength of 11 Kg.

A	Note 3 updated	Original Signed	Oct 24
	New issue	-	May 10
REF.	REVISION	SIGNATURE	DATE

**SITE HOARDINGS FOR
APPLYING GRAPHIC FILM
(SHEET 2 OF 2)**

HIGHWAYS DEPARTMENT

REFERENCE

DRAWING No.

CAD

SCALE

As shown

H 6161A