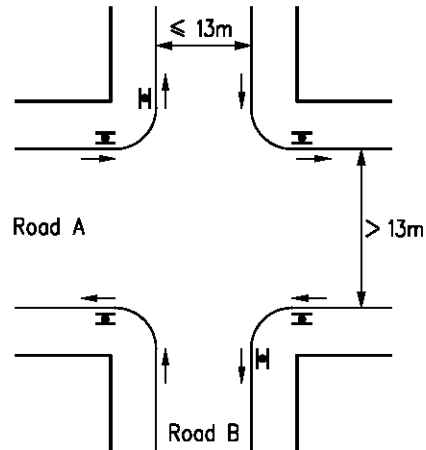
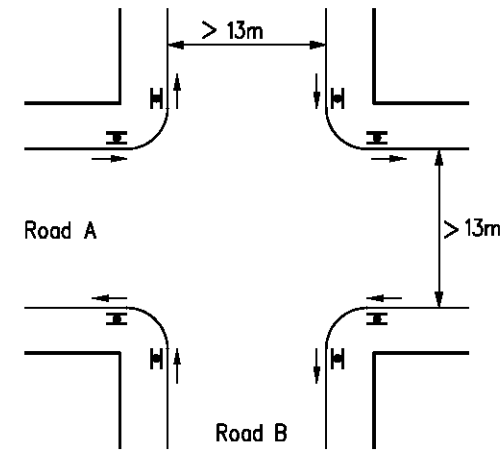


JUNCTION OF TWO NARROW STREETS



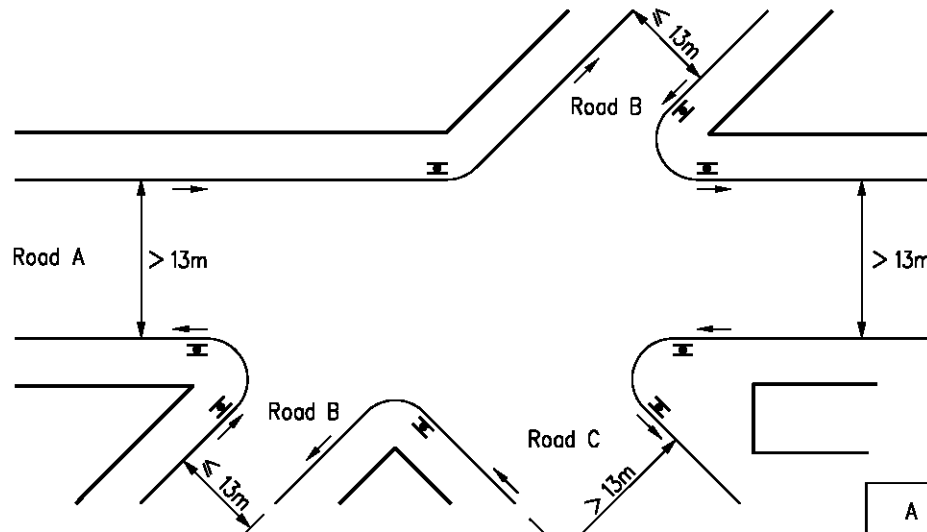
JUNCTION OF A WIDE STREET AND A NARROW STREET



JUNCTION OF TWO WIDE STREETS

LEGEND:

- Traffic direction
- ≡ Position of street name plates



COMPLICATED JUNCTION

Note:

1. Refer to HyD Standard Drawing No. H6153 for recommended layout at a corner of road junction.

A	Cantilever-mounted option for street name plates deleted.		Oct 04
	New Issue		Mar 04
REF.	REVISION	SIGNATURE	DATE

LAYOUTS OF STREET NAME PLATES WITH BUILDING NUMBERS AT ROAD JUNCTION

HIGHWAYS DEPARTMENT			
REFERENCE	DRAWING No.	CAD	
SCALE	DIAGRAMMATIC	H 6154A	