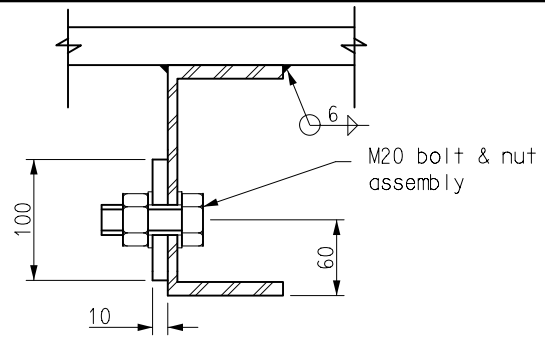


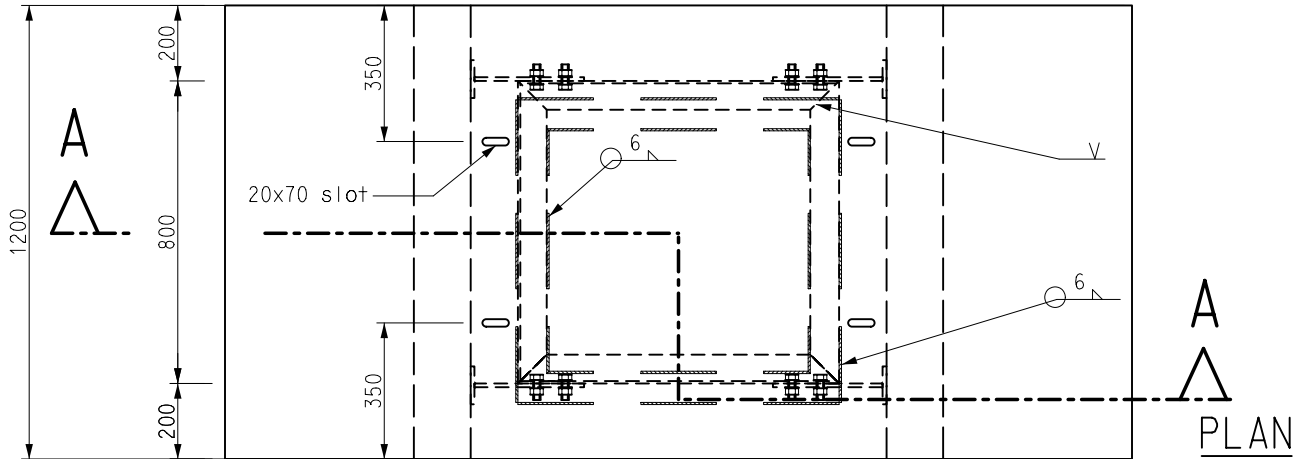
DETAIL 'C'

SCALE 1 : 5

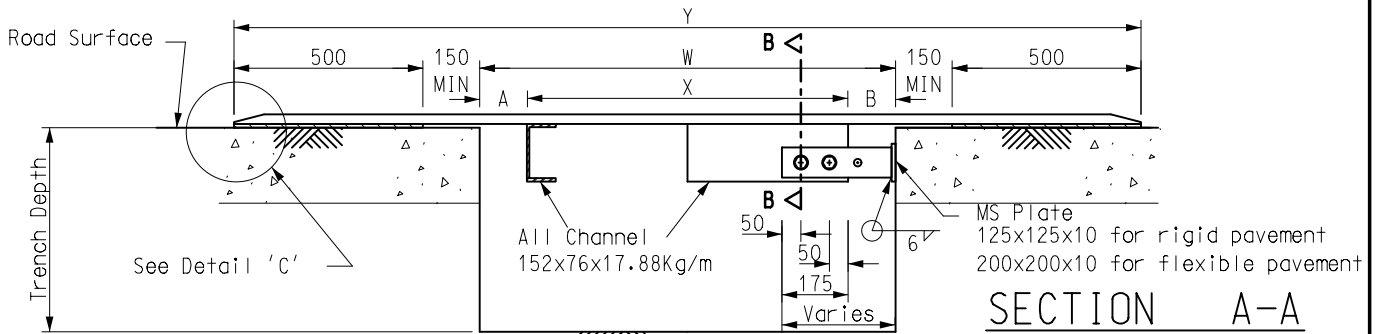


SECTION B-B

SCALE 1 : 5



PLAN



SECTION A-A

Notes :

- Structural steelwork shall be of grade S275J0 complied with BSS NE 10025 or equivalent.
- All fillet welds to be 6mm unless otherwise specified.
- Top of steelplate to be treated with anti-skid dressing; other surfaces to be treated with protective painting.
- Welding between channels to be full penetration weld.
- Design to be according to BS EN 1990, 1991, 1993 or other relevant BS EN standard(s).
- Other details of lifting holes are to be approved by the Engineer.
- The surface of the steel plate shall be marked with alternate black and yellow diagonal strips of 300mm width. The yellow markings shall have resistance and reflective characteristics equivalent to common thermoplastic road markings.
- Alternative design for particular site conditions (e.g. block pavement) shall be approved by chartered engineer and the appropriate authorities shall be notified without undue delay.
- The name of the roadwork undertaker should be marked on the steel plate for easy identification.
- Chamfering shall be provided at the perimetric edges of the steel plate or steelplate group.

Type	W (Trench Width)	X	Y	A or B (max)
A	500 TO < 900	450	2200	225
B	900 TO < 1200	850	2500	175
C	1200 TO < 1400	1150	2700	125

- Shoring support and drainage measures shall comply with the "Guide to Trench Excavations (Shoring Support and Drainage Measures)".
- Design of support to the vertical faces of trench shall take into account the loading induced by the decking and the traffic above.
- For decking with multiple steel plates, the plates should be securely fixed together to prevent dislocation.
- Gaps between adjoining steel plates should not be more than 5mm.

A	Note 1 and 5 revised	Original signed	Dec 22
	Former Drg. No. H6136B with notes 13 to 14 added	-	Nov 13
REF.	REVISION	SIGNATURE	DATE

HIGHWAYS DEPARTMENT

TYPICAL VEHICLE CROSSING  
OVER TRENCH OPENING  
FOR RIGID PAVEMENT  
(NOT FLUSH WITH ROAD SURFACE)

REFERENCE	RD / 050 A	DRAWING No.	CAD
SCALE	1 : 20 OR AS SHOWN	H 6136/2A	