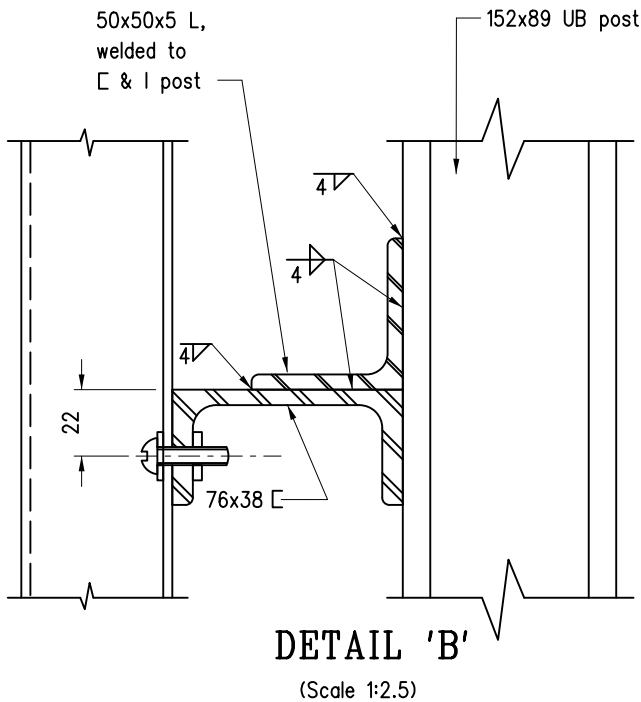
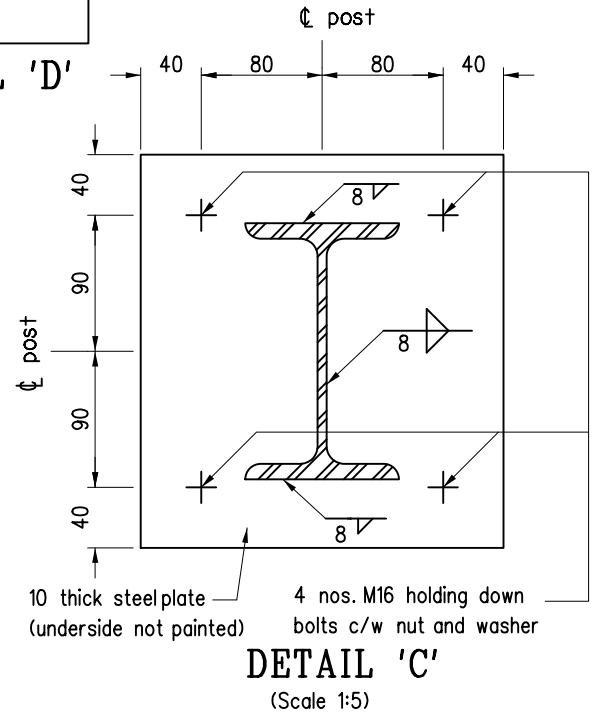


Notes:

1. Dimensions are in millimetres.
2. For details of Highways Department logo and Construction Industry Logo, see Drg. H6101 and H6163 respectively.
3. All steelwork except corrugated steel sheeting shall be painted in accordance with Appendix 18.2 of G.S. 2020.
4. All concrete shall be grade 20/20. The use of recycled aggregates may be considered.
5. Corrugated steel sheeting shall have section modulus not less than 2000mm³/m. The sheeting shall be to BS3083 8/3 G350.
6. Alternative construction details (including foundation details) for the site hoarding, which must be capable of withstanding a wind pressure of 1.2 KPa, shall be agreed to by the Engineer.



| REF. | REVISION | SIGNATURE | DATE |
|------|---|-----------------|--------|
| E | Note 3 revised | Original signed | Aug 23 |
| D | Note 2 revised, detail 'D' added and dimensions of detail 'A' revised for clarity | | Jul 11 |
| C | Notes 3, 4 and 6 revised | | Nov 07 |
| B | Highways Department in Chinese is placed at the top of the logo | | Dec 99 |
| A | Sizes of post & steel plate and details of welding revised | | Jun 97 |
| | Former Drg. No. H6007/2 | | Jun 94 |

**SITE HOARDINGS
(SHEET 2 OF 2)**

HIGHWAYS DEPARTMENT

REFERENCE

DRAWING No.

CAD

SCALE

1:25 or As shown

H 6111E