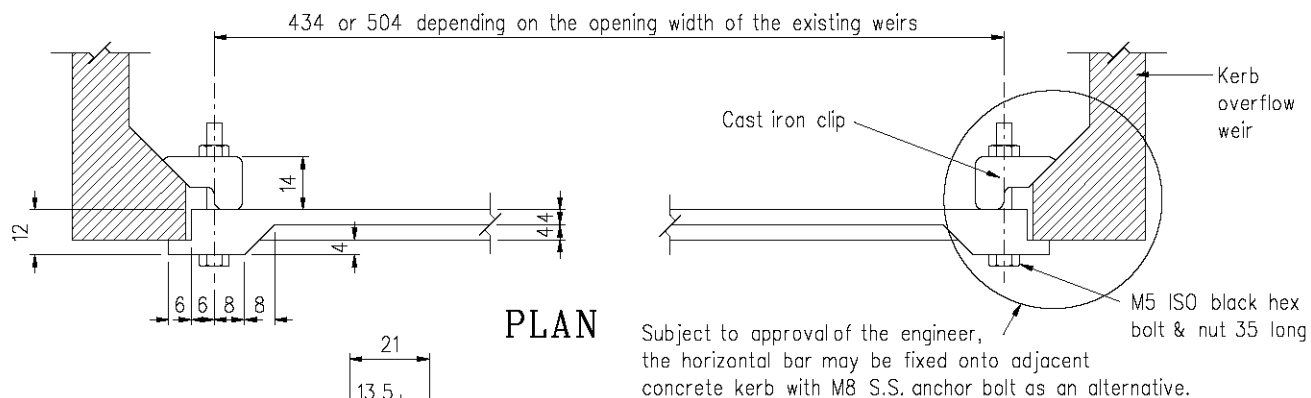


ELEVATION

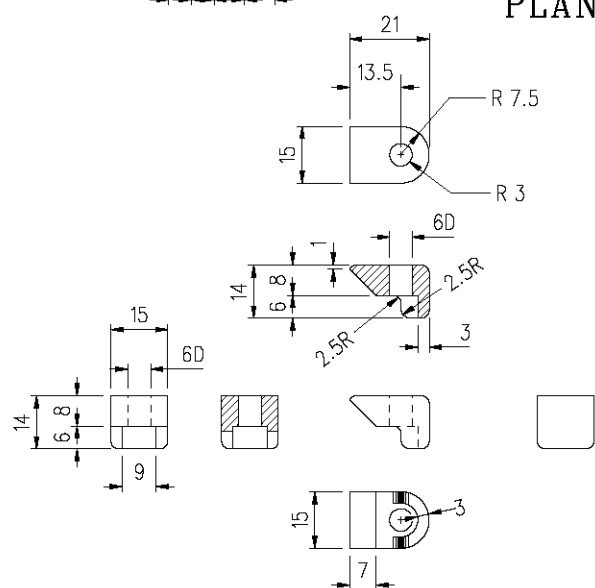


PLAN

Subject to approval of the engineer, bolt & nut 35 long
the horizontal bar may be fixed onto adjacent
concrete kerb with M8 S.S. anchor bolt as an alternative.

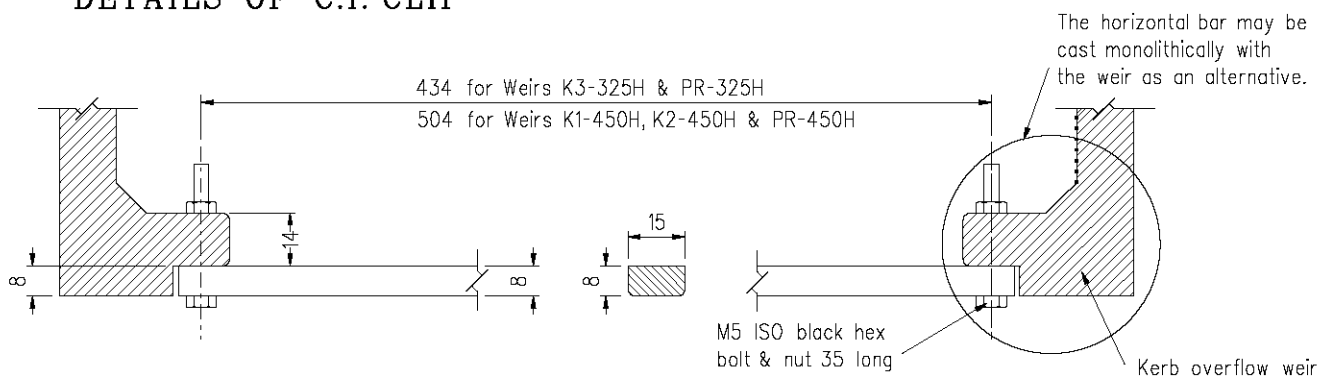
Notes :-

1. Dimensions are in millimetres.
2. All corners are to be rounded to approximately 2 mm radius.
3. The nuts and bolts shall be hot dip galvanized or stainless steel.
4. Other than bolts and nuts, material is to be cast iron grade 150 of B.S.1452.



DETAILS OF C.I. CLIP

BAR FOR MAINTENANCE OF EXISTING WEIRS ONLY



BAR FOR NEW OVERFLOW WEIRS - PLAN

A	Alternative fixing details of horiz. bar added		Nov 12
	Former Drg. NO. H3014A with general revision		June 94
REF.	REVISION	SIGNATURE	DATE

BAR FOR
KERB OVERFLOW WEIR

HIGHWAYS DEPARTMENT

REFERENCE	DRAWING No.	CAD
SCALE 1 : 2	H 3129A	