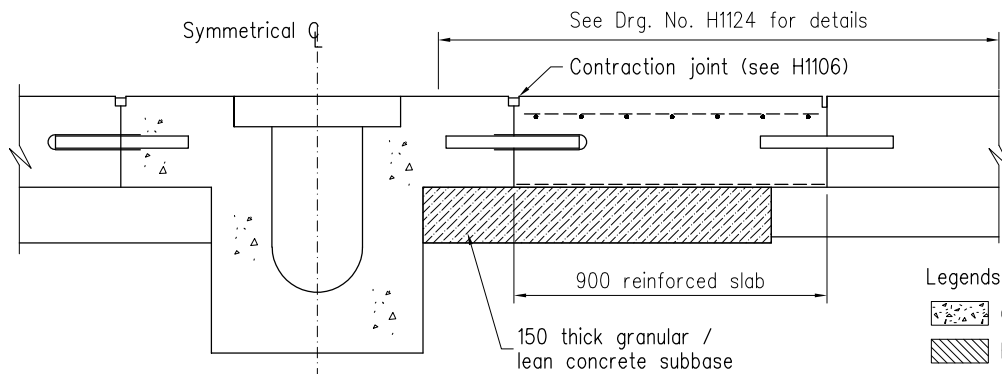
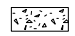






TRANSITION BETWEEN TRANSVERSE DRAIN AND FLEXIBLE PAVEMENTS



TRANSITION BETWEEN TRANSVERSE DRAIN AND CONCRETE PAVEMENTS

Legends:

-  Concrete
-  Road-base
-  Base course
-  Wearing course
-  Granular/lean concrete subbase

Notes:

1. All dimensions are in millimetres.
2. Concrete shall be Grade 40/20.
3. The difference in level between the top surface of the compound material grating and adjoining concrete shall not exceed 3mm.
4. The concrete seating shall be properly cast. Any defect in concrete finishes and level shall be rectified with epoxy mortar with min. 100mm thickness.
5. Template is recommended to control the position of the bolts during concreting. Sufficient vent holes should be provided to ensure adequate compaction of the concrete.
6. The compound material grating shall comply with the requirements for compound material grating in the GS to the approval of the Engineer.
7. Double gullies at kerb are recommended if the site conditions permit. Also, the overflow weir can be omitted to suit site conditions.
8. It is recommended to avoid locating transverse drain at road bend.
9. The dynamic load resistance washer set comprises (from bottom to top):
 - 1 no. 50mm dia. 5mm thick washer
 - 1 no. centering washer
 - 1 no. standard nut
 - 1 no. safety nut
10. The void between the bolt and grating through hole shall be grouted with cementitious grout.
11. The details of transverse drain could serve as tunnel cut-off drain.

**TYPICAL DETAILS OF TRANSVERSE DRAIN
(SHEET 3 OF 3)**

	New issue	-	Jul 23
REF.	REVISION	SIGNATURE	DATE
HIGHWAYS DEPARTMENT			
REFERENCE		DRAWING No.	CAD
SCALE		H 3161	
Diagrammatic			