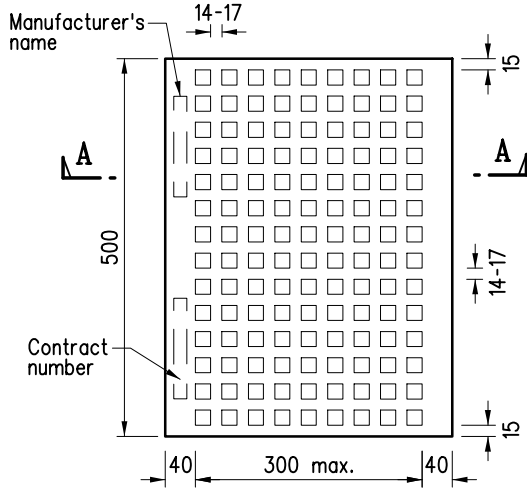
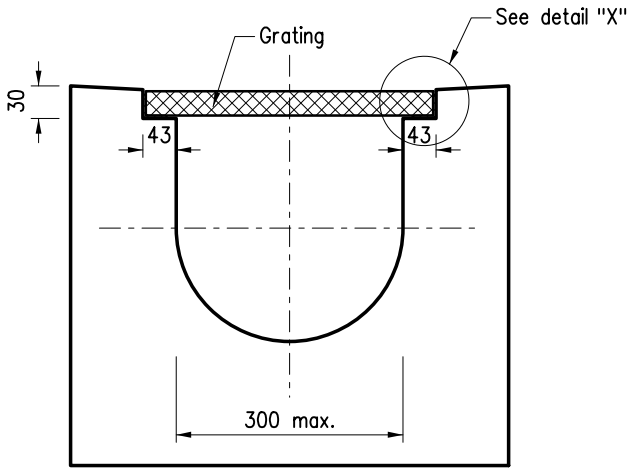


**SECTION A-A**

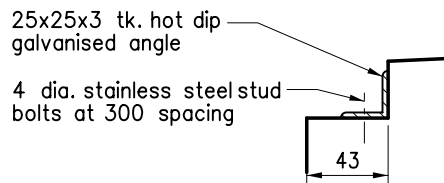


**GRATING - SQUARE HOLES PATTERN**

(All holes are 20x20 in size and all ribs are of equal width. Exact no. of holes and ribs to be adjusted to suit channel width)

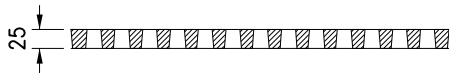


**TYPICAL CROSS SECTION OF CHANNEL**

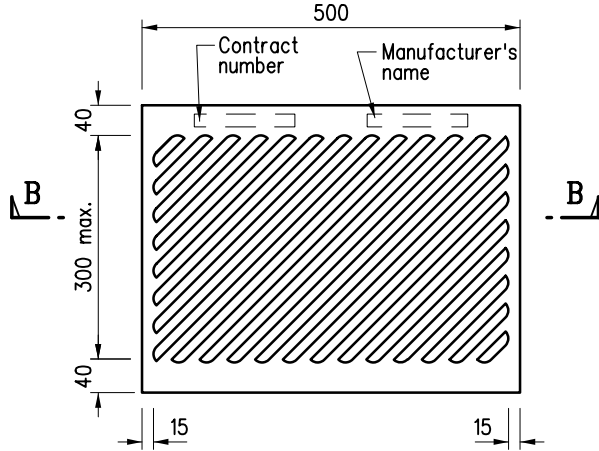


**DETAIL "X"**

(Scale 1:5)



**SECTION B-B**



**GRATING - OBLIQUE BARS PATTERN**

(All slots and ribs are 13 in width. Exact no. of slots and ribs to be adjusted to suit channel width)

**Notes:**

1. All dimensions are in millimetres.
2. Gratings are cast iron to conform with grade EN-GJL-150 of BS EN 1561.
3. All cast iron units shall be coated with a bitumen coating.
4. All grating corners shall be rounded to approximately 2mm.
5. Gratings with square holes pattern are suitable for use on cycle tracks. Gratings with oblique bars pattern are suitable for use along the back of footpaths or along verges.
6. Surface channel shall be planned on 500mm modules with special pieces purposely manufactured to suit actual site conditions and to avoid on-site cutting of gratings.
7. For hinged channel gratings on highway structures, refer to Structures Standard Drg. no. SSD94.
8. Lettering for the contract no. and manufacturer's name shall be raised 2mm above normal surface.

B	Note 2 Revised	Original signed	Nov 21
A	Revise the width of slots and ribs and the size of holes	-	Aug 18
	New Issue	-	Oct 11
REF.	REVISION	SIGNATURE	DATE

**CAST IRON CHANNEL GRATING NOT SUBJECT TO VEHICULAR LOAD**

**HIGHWAYS DEPARTMENT**

REFERENCE  
Obsolote Drg. H2233

DRAWING No.

CAD

SCALE  
1 : 10 or As Shown

**H 3156B**