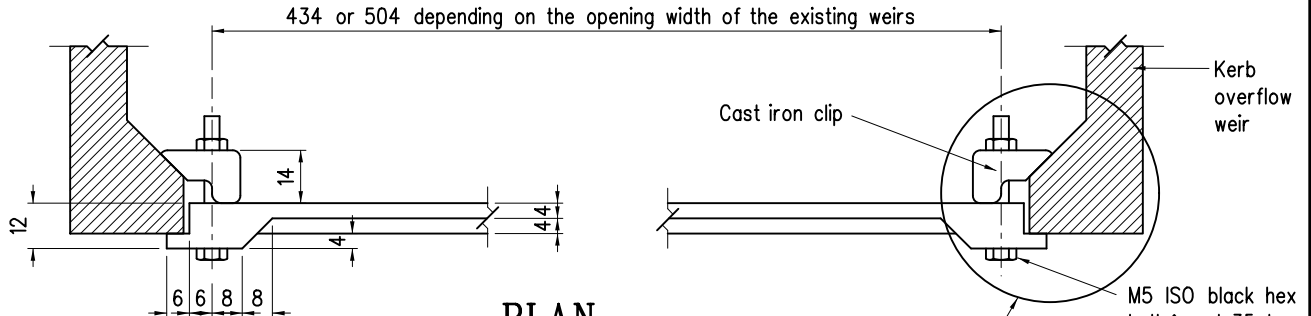


ELEVATION

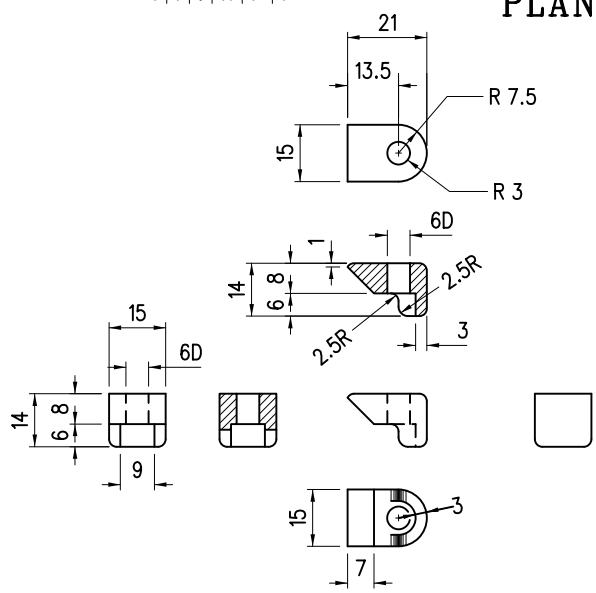


PLAN

Subject to approval of the engineer, the horizontal bar may be fixed onto adjacent concrete kerb with M8 S.S. anchor bolt as an alternative.

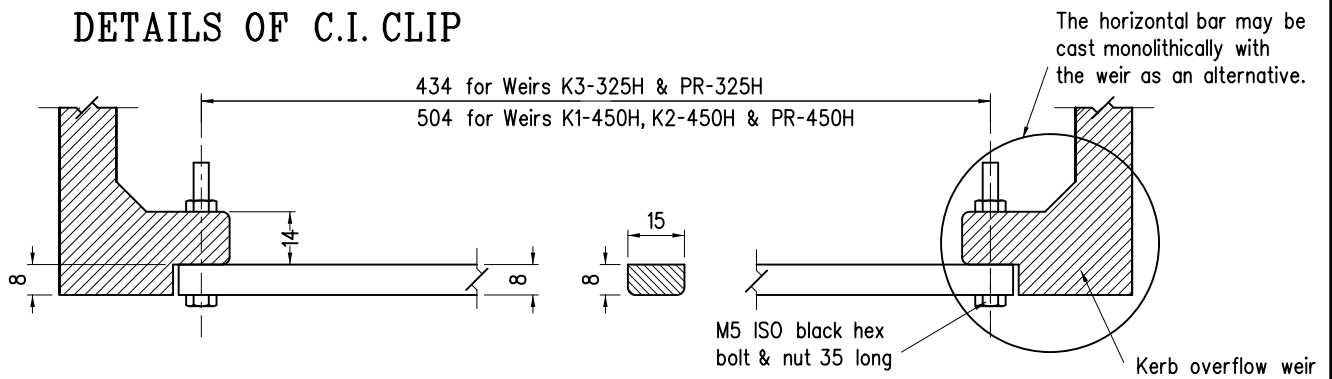
Notes :-

1. Dimensions are in millimetres.
2. All corners are to be rounded to approximately 2 mm radius.
3. The nuts and bolts shall be hot dip galvanized or stainless steel.
4. Other than bolts and nuts, material is to be cast iron grade 150 EN-GJL-150 of BS EN 1561.



DETAILS OF C.I. CLIP

BAR FOR MAINTENANCE OF EXISTING WEIRS ONLY



BAR FOR NEW OVERFLOW WEIRS - PLAN

B	Note 4 Revised	Original signed	Nov 21
A	Alternative fixing details of horiz. bar added	-	Nov 12
	Former Drg. NO. H3014A with general revision	-	Jun 94
REF.	REVISION	SIGNATURE	DATE

BAR FOR KERB OVERFLOW WEIR

HIGHWAYS DEPARTMENT

REFERENCE	DRAWING No.	CAD
SCALE	H 3129B	
1:2		