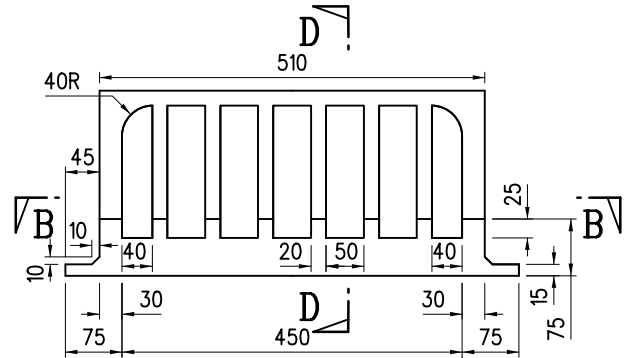
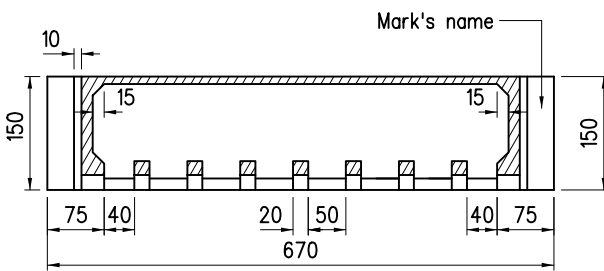


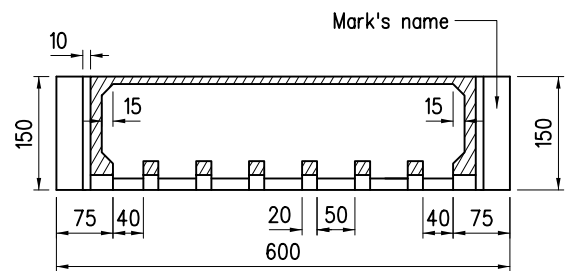
FRONT ELEVATION  
( TYPE PR-450V )



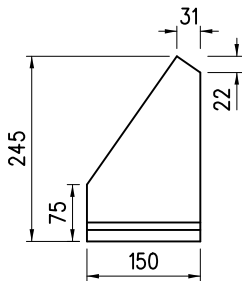
FRONT ELEVATION  
( TYPE PR-325V )



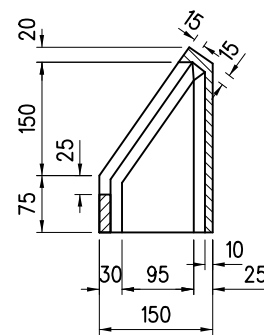
SECTION A-A



SECTION B-B



SIDE VIEW  
( TYPE PR-450V &  
TYPE PR-325V )



SECTION C-C  
( SECTION D-D SIMILAR )

Notes :

1. Dimensions are in millimetres.
2. All corners are to be rounded to approximately 2 mm radius.
3. Material is to be cast iron grade EN-GJL-150 of BS EN 1561.

A	Note 3 Revised	Original signed	Nov 21
	Convert from former Drg.No.H3128A	-	Sep 15
REF.	REVISION	SIGNATURE	DATE

KERB OVERFLOW WEIRS  
TYPE PR-450V AND  
TYPE PR-325V

HIGHWAYS DEPARTMENT

REFERENCE

DRAWING No.

CAD

SCALE

1 : 10

H 3128/1A